

GENERAL NOTES:

- USGS Datum.
- Unless shown or stated otherwise on these drawings, materials and construction shall be in accordance with City of Wichita Standard Specifications.
- Contractor will be required to provide a minimum advance notice of seventy-two (72) hours to utility companies prior to starting any excavation as follows:
Kansas One-Call 1-800-344-7233
The Contractor must notify the following in case of an emergency:
AT&T (Telephone) 800-870-8350
Cox Communications (Cable) 782-0581
Kansas Gas Service (Gas) 632-3101
City of Wichita Water & Sewer 262-6000
Westar (Electric) 261-9112
Black Hills Energy (Gas) 800-351-8257
- The Contractor shall be responsible for preserving property lines. The Contractor will be required to re-establish any property lines which are damaged or destroyed by his construction operations. Such lines shall be re-established by a licensed land surveyor in accordance with state law.
- Existing utilities and their locations, as shown on the plans, represent the best information obtainable for design. Location information has been obtained from the various companies and is either from company utility drawings or company provided field locations. The plan locations shown are not guaranteed. Additional existing utilities may also be encountered. Contractor to field verify location and depth of all utilities prior to construction and report findings to project engineer.
- Rubble from the removal of miscellaneous structures shall be disposed of on sites to be provided by the contractor. These sites shall be approved by the engineer as to suitability, appearance, and site location. Locations that, in the opinion of the engineer, will leave an unsightly appearance will not be approved. All disposal sites must be approved by the Kansas Department of Health and Environment. Material either stockpiled or disposed of in a flood plain would require a Kansas State Board of Agriculture Permit. Any material dumped in waters of the United States or wetlands is subject to U.S. Corps of Engineers permitting regulations. Any material buried or stockpiled beyond approved construction limits would require additional archeological investigations unless buried in a previously approved borrow location.
- Excess excavation shall be placed as compacted fill on the Mattress Hub Property as directed by the Engineer or Owner.
- Contractor shall provide temporary sediment control at all intakes. Such control shall be maintained until and upon termination of seeding. Acceptable means of control shall be approved by the engineer. Cost shall be considered subsidiary to site clearing and restoration. (Refer to erosion control sheet for measures).
- Equipment and construction materials shall remain out of and away from tree driplines as so as not to compact the root zone or damage the tree.
- Any tree that must have branches removed shall be trimmed with a sharp instrument/food that is intended for such operations. Knocking branches off with a backhoe or other similar machine is not acceptable. Refer to the detail for tree trimming procedure.
- Contractor shall not start work on the project until the project inspector is assigned to the project and is present on the site. Any work done without inspection will be required to be uncovered for inspection.
- The contractor will be required to restore all ditches, swales, road shoulders, embankments and bank lines to their original slopes and grades except as shown otherwise.
- Construction staking and inspection will be provided by the Owner.
- The Contractor will be responsible for testing.

LEGAL DESCRIPTION:

Part of Lot 4, Block 1, Pearson Farms 3rd Addition, to Wichita, Sedgewick County, Kansas.

BENCHMARKS:

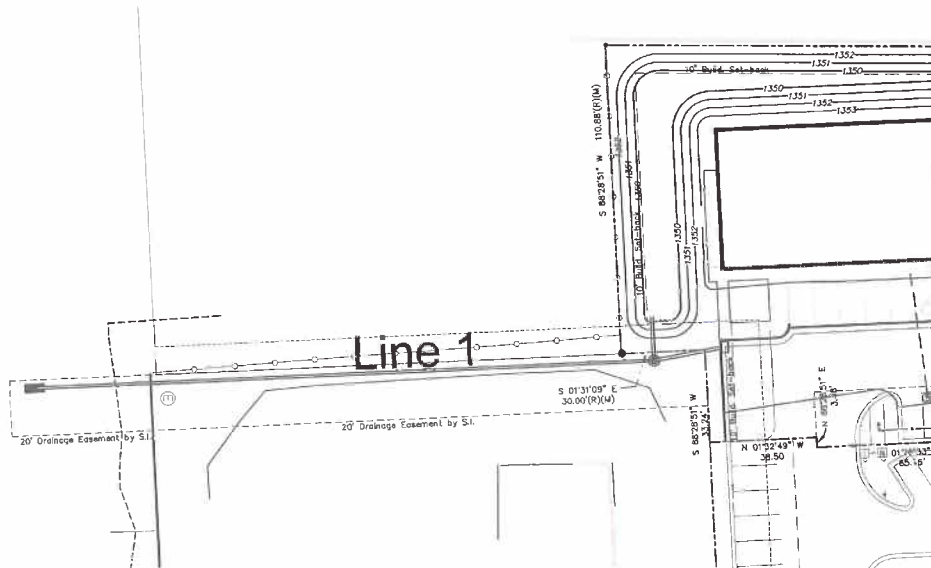
- 1' cut on collar for light standard. Elev.=1354.52
- 2' cut on concrete pad under transformer. Elev.=1353.42

CONSTRUCTION PLAN FOR PRIVATE STORM SEWER IMPROVEMENTS
MATTRESS HUB

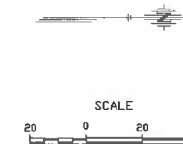
TO

THE CITY OF WICHITA, KANSAS
JAMES ARMOUR, P.E. - CITY ENGINEER

0077 PPD OCA NO. 607861



LOCATION MAP
No Scale



SHEET INDEX

TITLE SHEET	SHEET NO. 3.0
STORM SEWER PLAN AND PROFILE	SHEET NO. 3.1
STORM SEWER DETAILS	SHEET NO. 3.2-3.3
EROSION CONTROL	SHEET NO. 3.4
BURIED DETAILS	SHEET NO. 3.5-3.7
FINAL PLAN	SHEET NO. 3.11

MARCH 2012

PLANS PREPARED BY



POE & ASSOCIATES, INC.
CONSULTING ENGINEERS
5940 E. Central, Suite 200 • Wichita, KS 67208-0242
Phone 316.685-8114 • FAX 316.685-4444

APPROVED AS NOTED BY CITY ENGINEER OF WICHITA

Storm Water *[Signature]* 03/24/12
Engineering *[Signature]* 5/24/12

NOTE TO CONTRACTORS

In addition, inspection and testing for this project is to be provided by a Licensed Consulting Engineering Firm under contract with the Owner/Developer. Said inspection is to be in accordance with the City of Wichita standard construction engineering practice and certified by a Licensed Professional Engineer. No work shall be performed in substantial compliance or public right-of-way by the Contractor without such inspection and what city work be commenced without written authorization by the City Engineer. All Construction and Materials shall comply with the City of Wichita Specifications and Standards (on file and available in the City Engineer's Office).

AS BUILTS

Contractor: Utilities Plus	Project Inspector: Larry Gann
kemiller ENGINEERS ARCHITECTS 1000 W. CENTRAL AVENUE WICHITA, KS 67202	

9/07/2012



CONSULTANT



**MATTRESS HUB
RETAIL BUILDING**
10055 W 21ST STREET
WICHITA, KANSAS

ISSUE:	DATE:
REVISION	5 JAN 12

TITLE SHEET

C3.0