

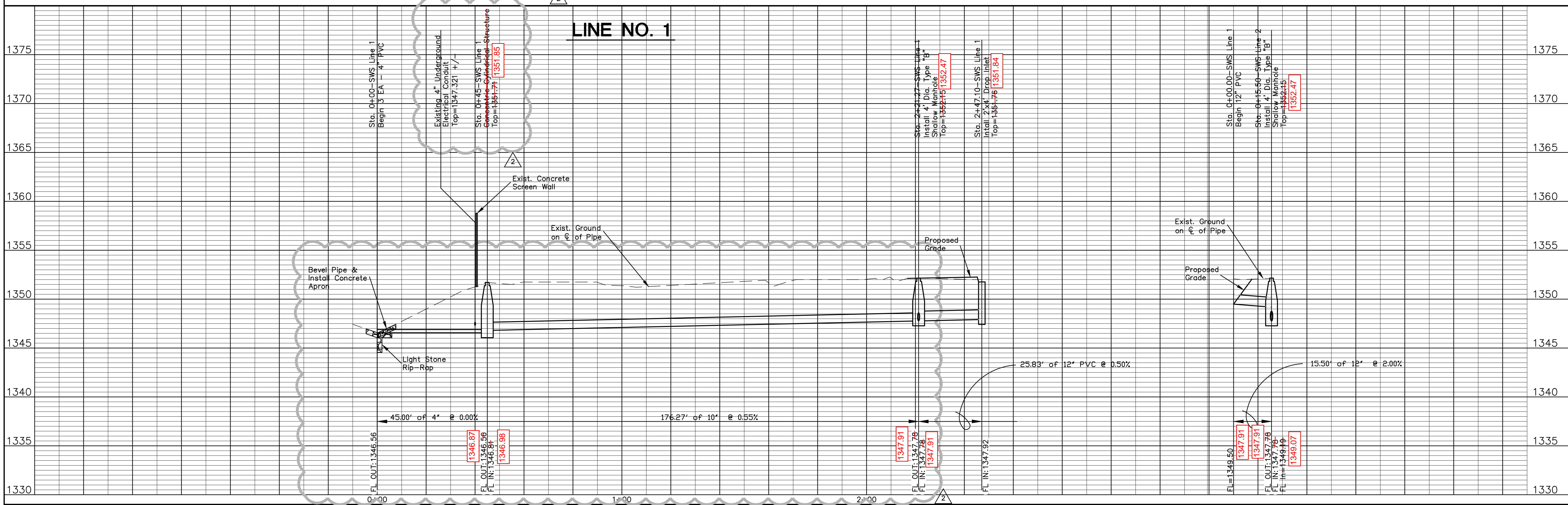
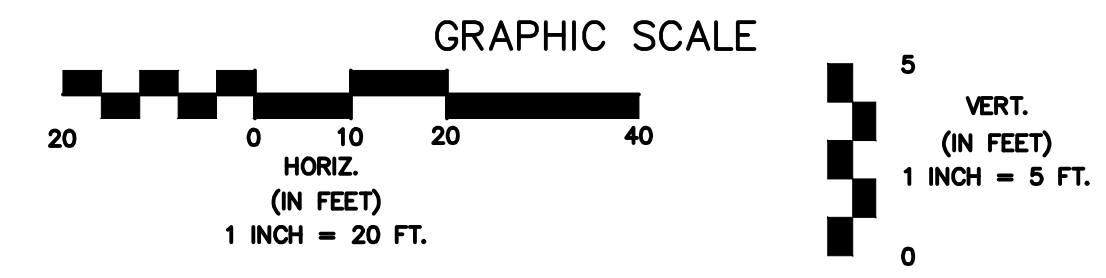
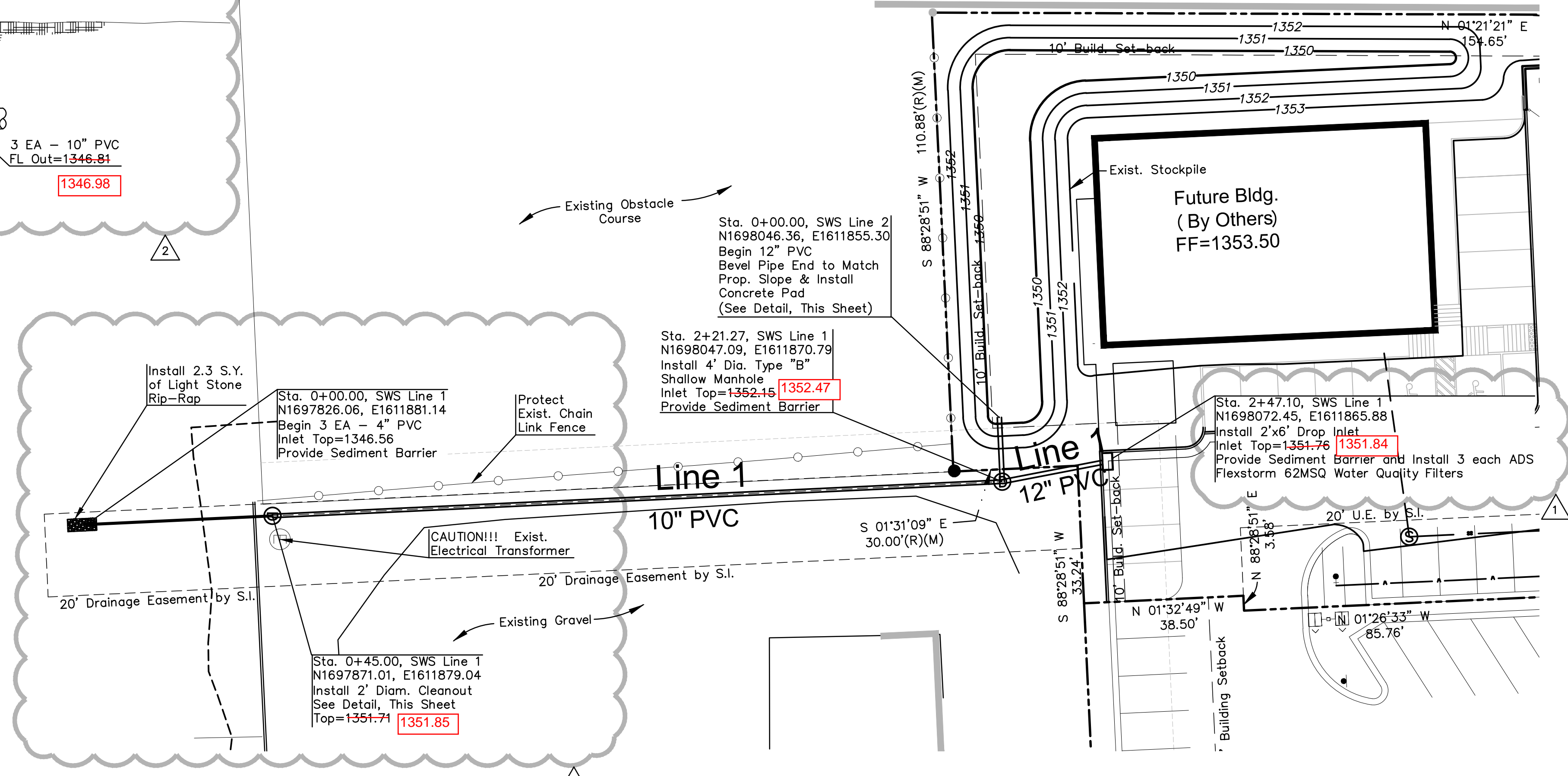
NOTES:
 1. Contractor to Field Verify location and Depth of All Utilities Prior to Construction and Report Findings to Project Engineer.

Remove Trees Only as Needed for Construction. Cost Shall be Subsidiary to Site Clearing.

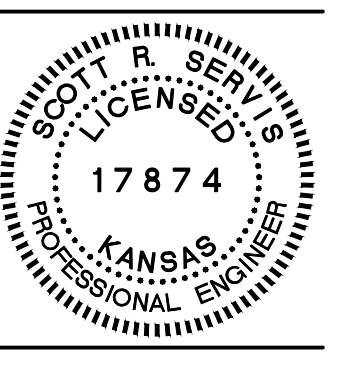
AS BUILTS

Contractor: Utilities Plus
 Project Inspector: Larry Gann

kemiller engineering
 516 S. Market, Wichita, KS 67202 (316)264-0242



SHELDENARCHITECTURE
 800 E. FIRST STREET, STE. 140 WICHITA, KANSAS 67202
 TEL: 316.263.4300 FAX: 316.263.4301



CONSULTANT:
POE & ASSOCIATES, INC.
 CONSULTING ENGINEERS
 5906 E. Central, Suite 200 Wichita, KS 67208-4242
 Phone: 316.268.4441 Fax: 316.268.4444

MATTRESS HUB RETAIL BUILDING
 10635 W 21ST STREET WICHITA, KANSAS

ISSUE:	DATE:
REVIEW	6 JAN 12
1	20 April 12
2	25 July 12

LINE 1 PLAN & PROFILE
C3.1