

SUBGRADE NOTES

CUT & FILL EARTHWORK OPERATIONS, SUBGRADE PREPARATION & SUBGRADE TREATMENT UNDER AREAS TO BE PAVED ARE TO BE DONE IN ACCORDANCE WITH THE **GEOTECHNICAL ENGINEERING REPORT** BY TERRACON DATED SEPT. 07, 2006.

PRIOR TO PLACEMENT OF TREATED SUBGRADE, THE UPPER 8" OF EXPOSED GRANULAR SUBGRADE PRIOR TO FILL PLACEMENT & ALL ADDITIONAL FILL SHALL BE COMPACTED TO AT LEAST 98% OF MDD BY ASTM D-698 AT WORKABLE MOISTURE CONTENTS.

ADDITIONAL FILL REQUIRED UNDER PAVEMENT SHALL BE APPROVED MATERIAL FREE OF ORGANIC MATTER & DEBRIS. MATERIAL SHALL BE PLACED IN LIFTS NO GREATER THAN 9" IN LOOSE THICKNESS & COMPACTED TO AT LEAST 98% OF MDD AT WORKABLE MOISTURE CONTENTS.

ALTERNATES FOR SUBGRADE TREATMENT

8" CLASS "C" FLY ASH 14%-16%, COMPACTED TO 98% STD. PROTECTOR MAX. DENSITY BY ASTM D-698 @ WORKABLE MOISTURE CONTENT.

8" CRUSHED LIMESTONE (SILTY GRAVEL), MEETING KDOT SPEC. AB-3.

CRUSHED CONCRETE OR LIMESTONE ON TENSAR BX 1100 GEO-GRID (OR EQUIVALENT)

5" BENEATH PARKING AREA
7" BENEATH DRIVES

A.C. PAVEMENT NOTES

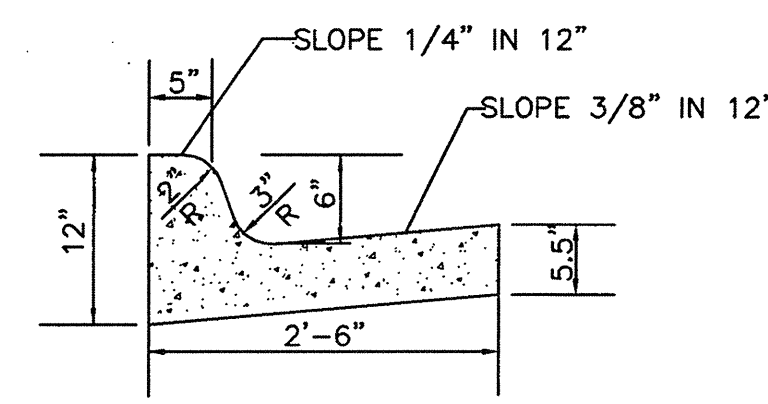
1) A TACK COAT OF EMULSIFIED ASPHALT (SC-1H OR CSS-1H) SHALL BE APPLIED AT AN APPROXIMATE RATE OF 0.05 GALLONS PER SQUARE YARD BETWEEN EACH LIFT OF ASPHALTIC MATERIAL.

2) BITUMINOUS BASE AND ASPHALTIC CONCRETE WEARING SURFACE SHALL BE PLACED WITH A LAYDOWN MACHINE HAVING AUTOMATIC CONTROLS FOR LINE AND GRADE.

3) CONSTRUCTION JOINTS IN EACH LIFT SHALL BE STAGGERED A MINIMUM DISTANCE OF ONE (1) FOOT FROM JOINTS IN PRECEDING LIFTS AND PLACED SO THAT A JOINT WILL BE CONSTRUCTED ON THE CENTERLINE OF THE TOP LIFT.

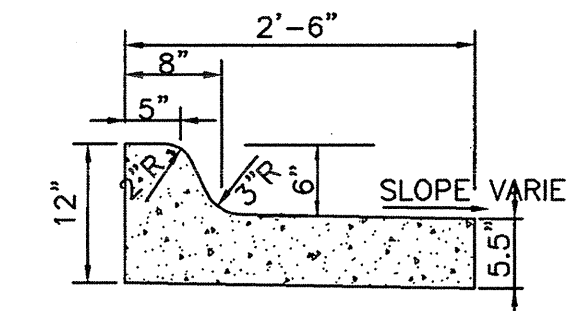
GENERAL NOTES

A SAW CUT OF AT LEAST ONE-HALF THE DEPTH OF THE EXISTING SURFACE COURSES OR ONE-FOURTH THE DEPTH OF THE EXISTING TOTAL PAVEMENT THICKNESS SHALL BE PROVIDED AT LOCATIONS WHERE PROPOSED CONSTRUCTION ABUTS AN EXISTING SURFACE OR PAVEMENT FOR WHICH PARTIAL REMOVAL OF THAT SURFACE OR PAVEMENT IS REQUIRED. SAW JOINT TO FACILITATE REMOVAL WITHIN THREE (3) FEET OF EXISTING JOINTS WILL NOT BE PERMITTED AND FOR SUCH INSTANCES THE LIMITS OF REMOVAL SHALL EXTEND TO THE EXISTING JOINT. SUCH SAW CUTS WILL NOT BE PAID FOR DIRECTLY AND THIS COST SHALL BE CONSIDERED AS SUBSIDIARY TO THE REMOVAL OF SURFACE OR PAVEMENT.



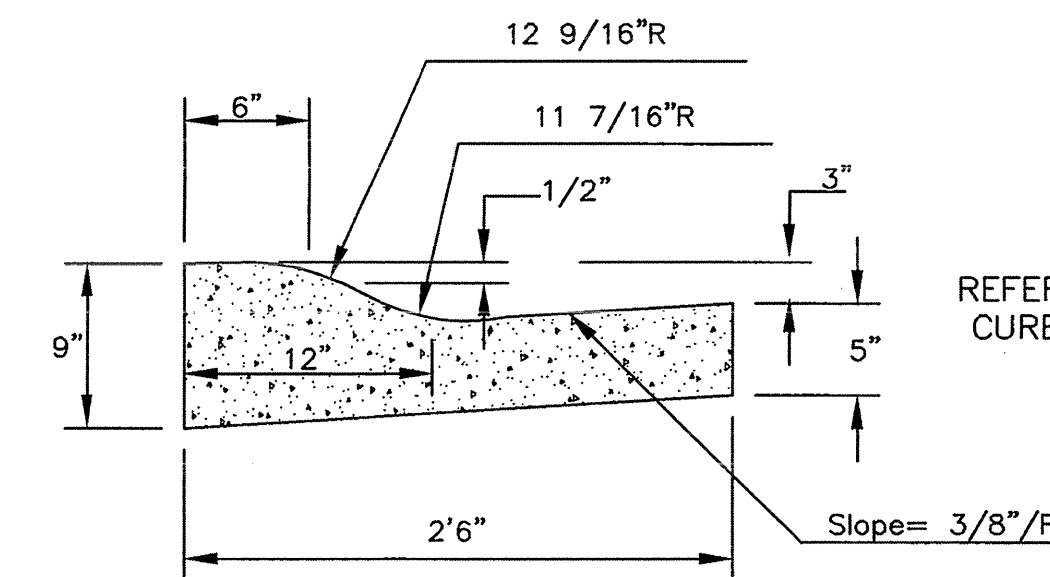
COMBINED CURB & GUTTER, FULL (6')
SCALE: NONE

REFER TO GRADING PLANS FOR CURB PLACEMENT TO ENSURE PROPER DRAINAGE



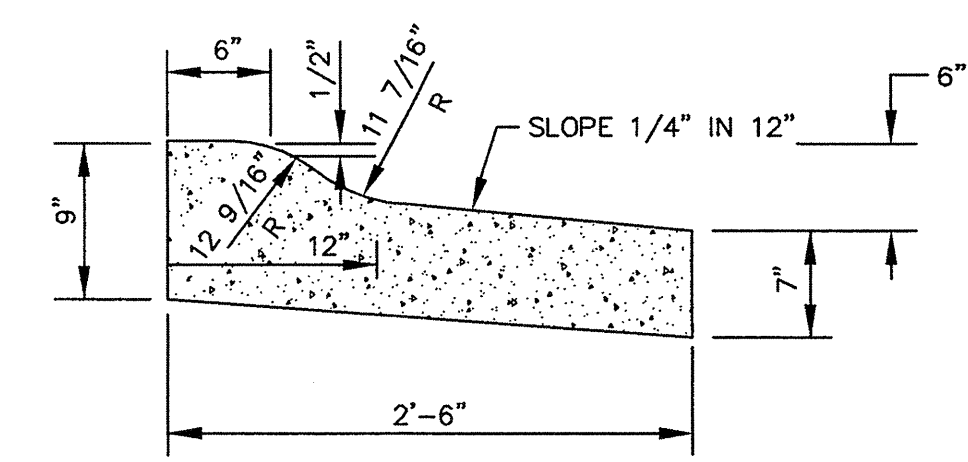
COMBINED CURB & GUTTER, FULL REVERSE (6')
SCALE: NONE

REFER TO GRADING PLANS FOR CURB PLACEMENT TO ENSURE PROPER DRAINAGE



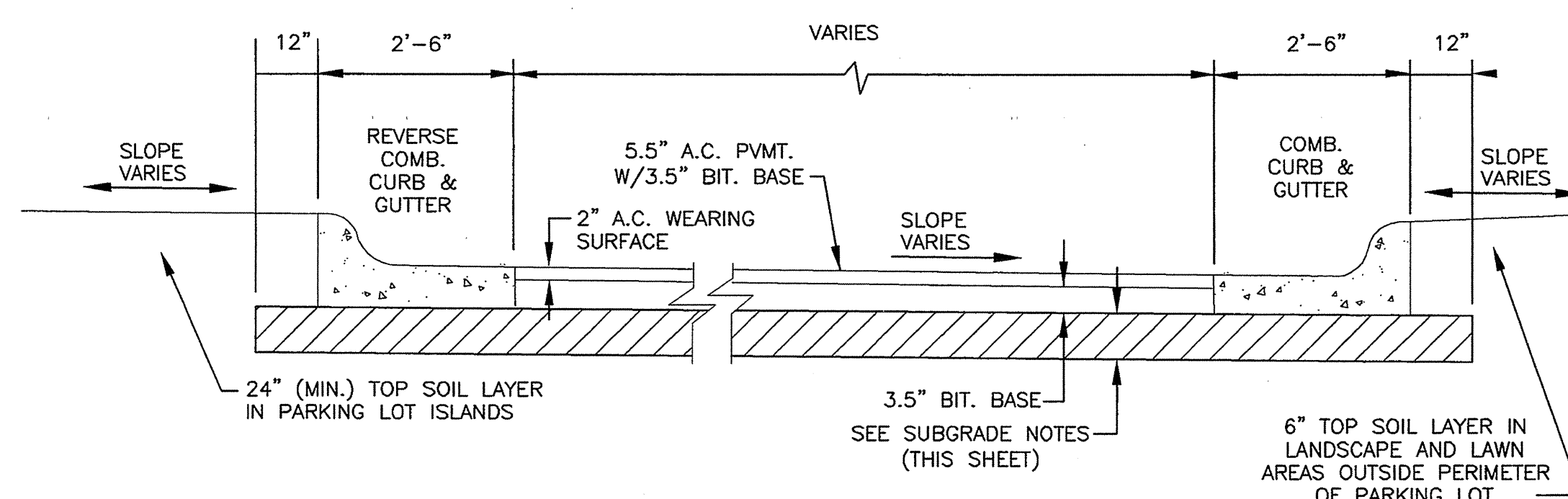
COMBINED CURB & GUTTER, ROLL TYPE (3 5/8')
SCALE: NONE

REFER TO GRADING PLANS FOR CURB PLACEMENT TO ENSURE PROPER DRAINAGE

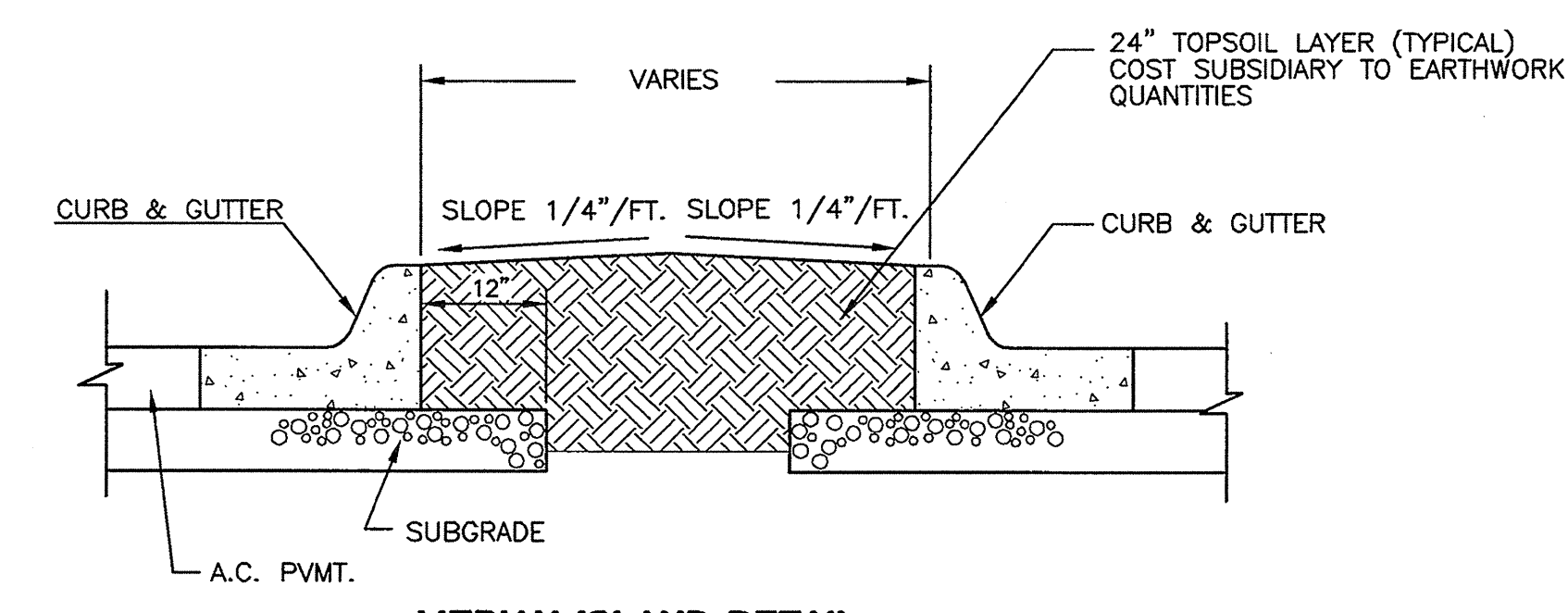


COMBINED CURB & GUTTER (REVERSE), ROLL TYPE (3 5/8')
SCALE: NONE

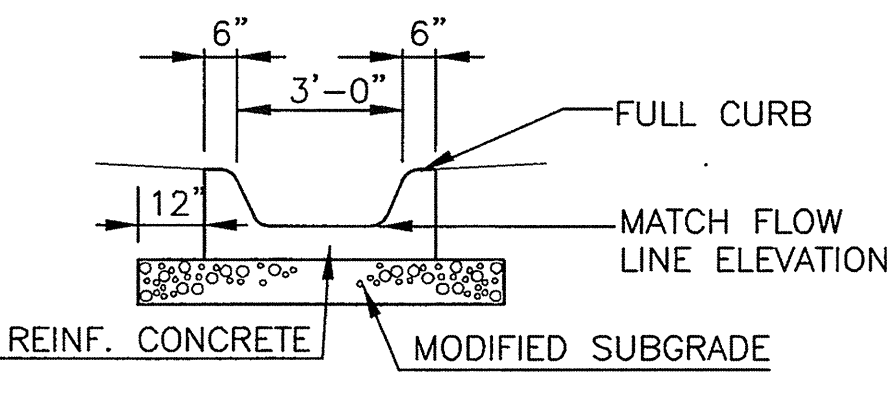
REFER TO GRADING PLANS FOR CURB PLACEMENT TO ENSURE PROPER DRAINAGE



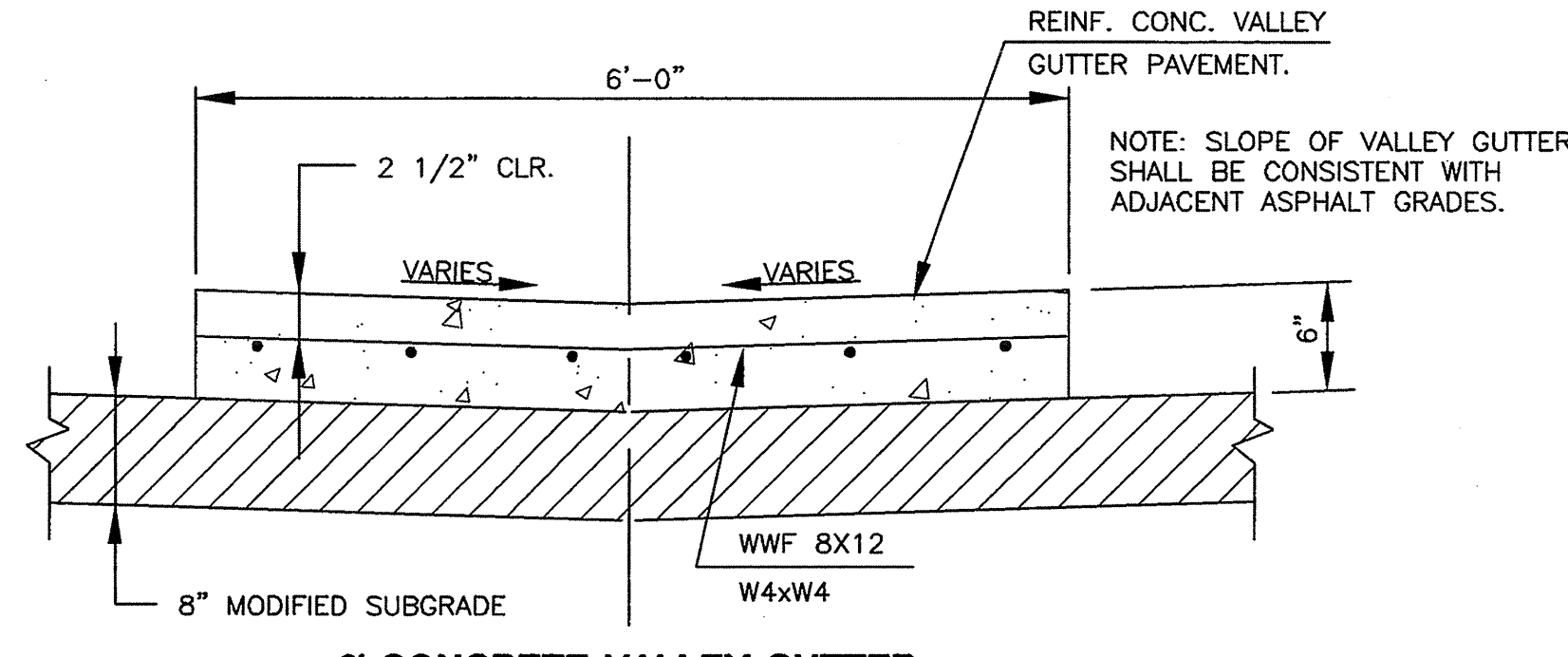
PARKING LOT TYPICAL SECTION (6.5' A.C. PAVEMENT)
SCALE: NONE



MEDIAN ISLAND DETAIL
SCALE: NONE

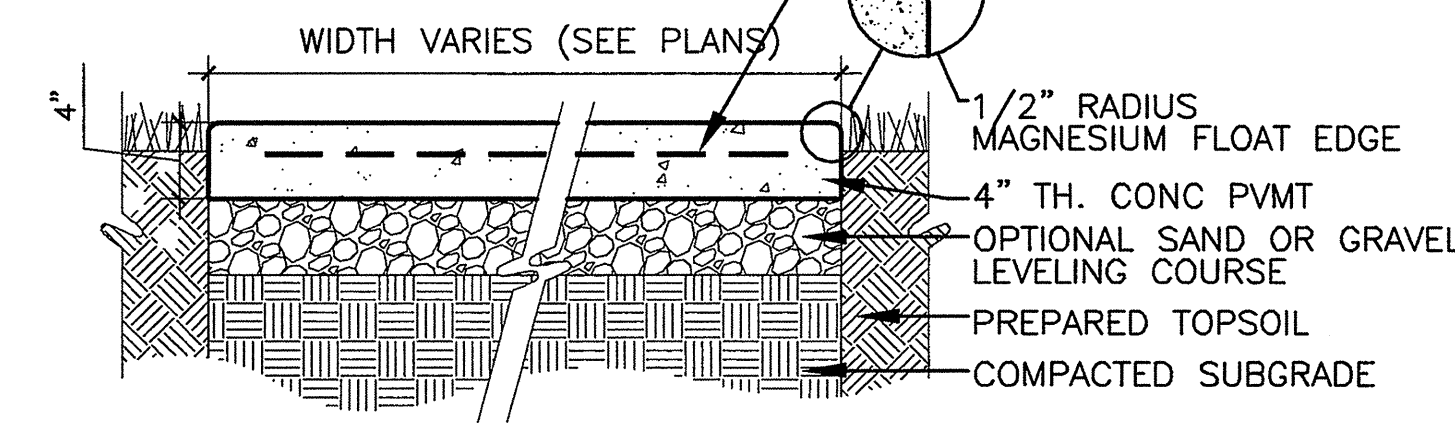


CONCRETE FLUME
SCALE: NONE

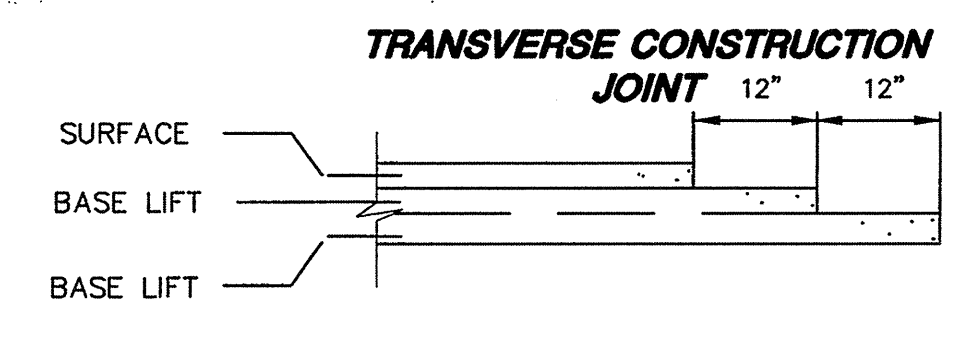


6' CONCRETE VALLEY GUTTER
SCALE: NONE

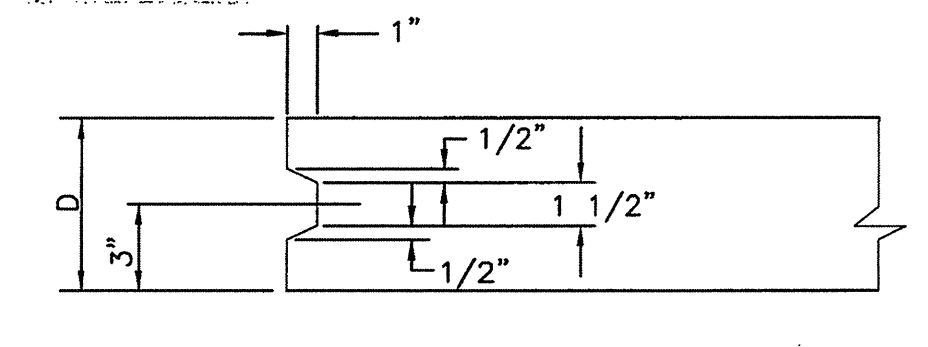
GENERAL NOTE:
SIDEWALKS SHALL NOT EXCEED 5% SLOPE OR EXCEED A 2% CROSS SLOPE.
NOTE: WWF TO BE SUPPORTED BY SAND PLATE BAR CHAIRS AT 4'-0" O.C.



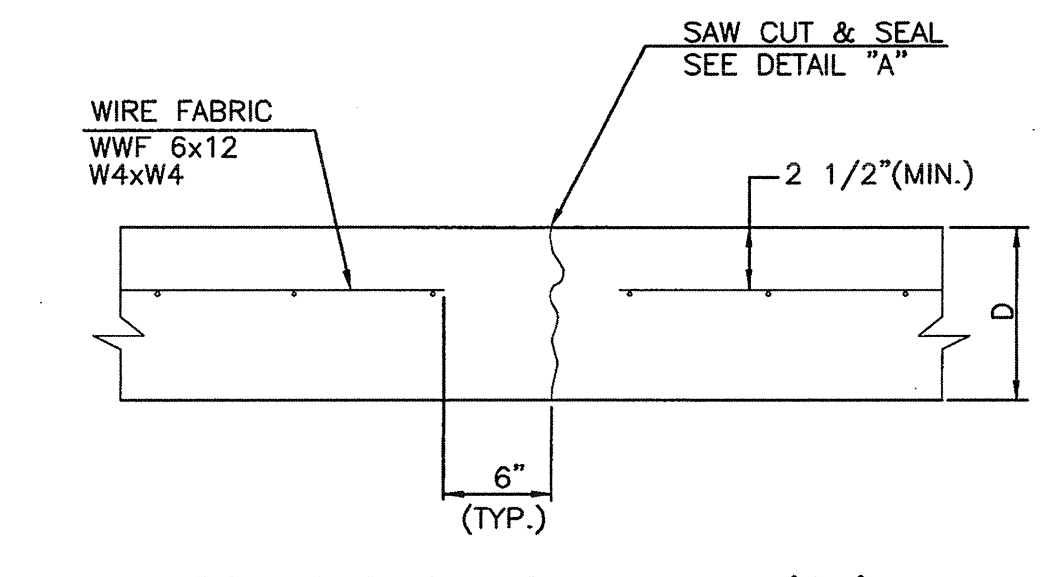
CONCRETE SIDEWALK
SCALE: NONE



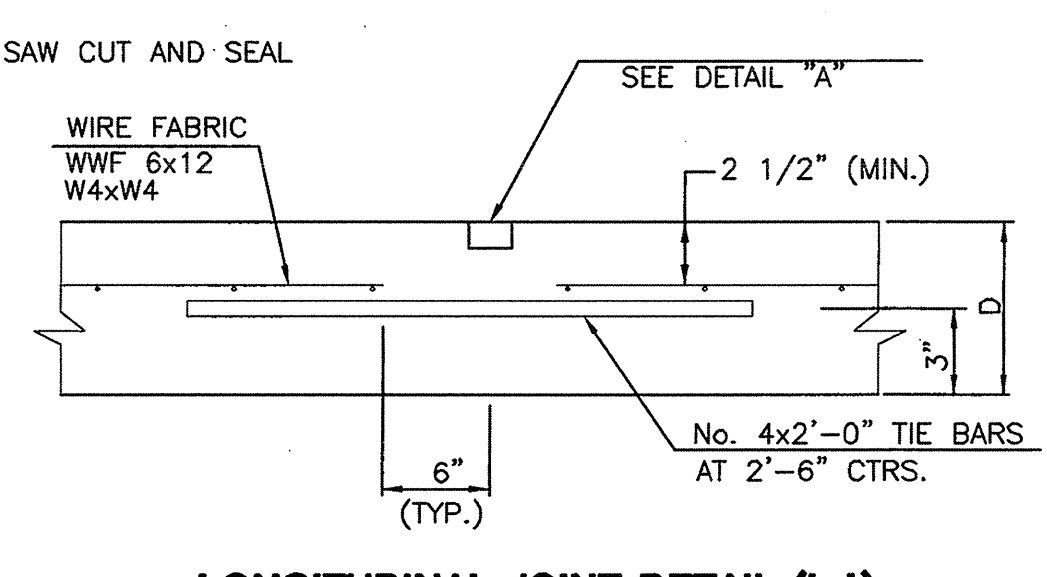
TRANSVERSE CONSTRUCTION JOINT
SCALE: NONE



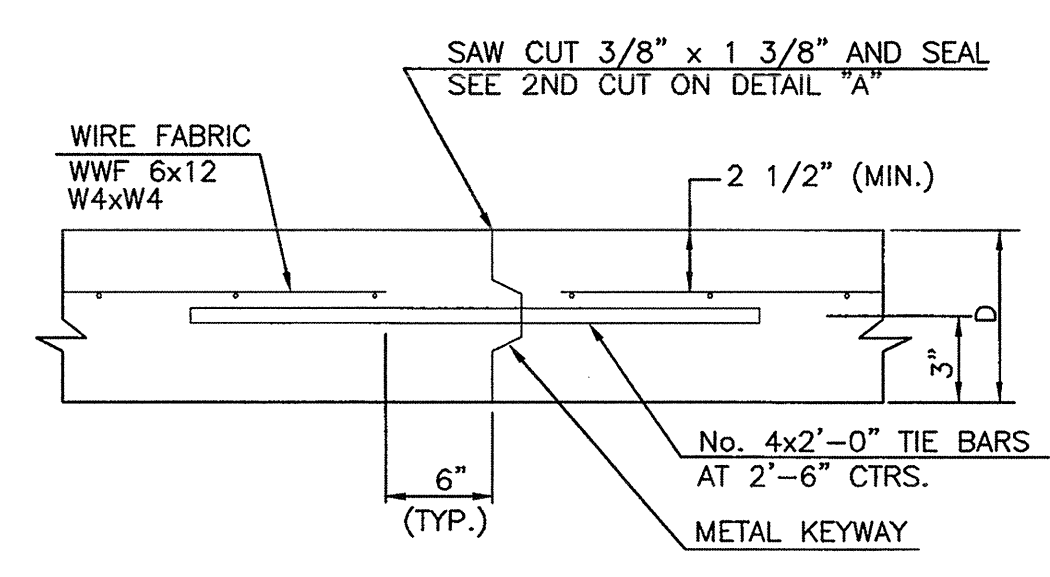
KEYWAY DETAIL
SCALE: NONE



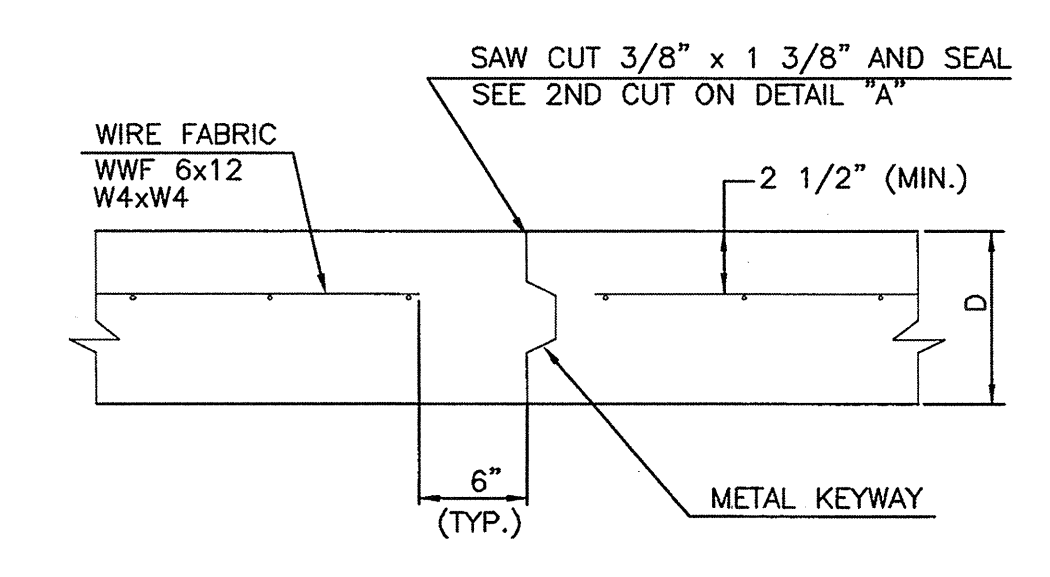
CONTRACTION JOINT DETAIL (C.J.)
SCALE: NONE



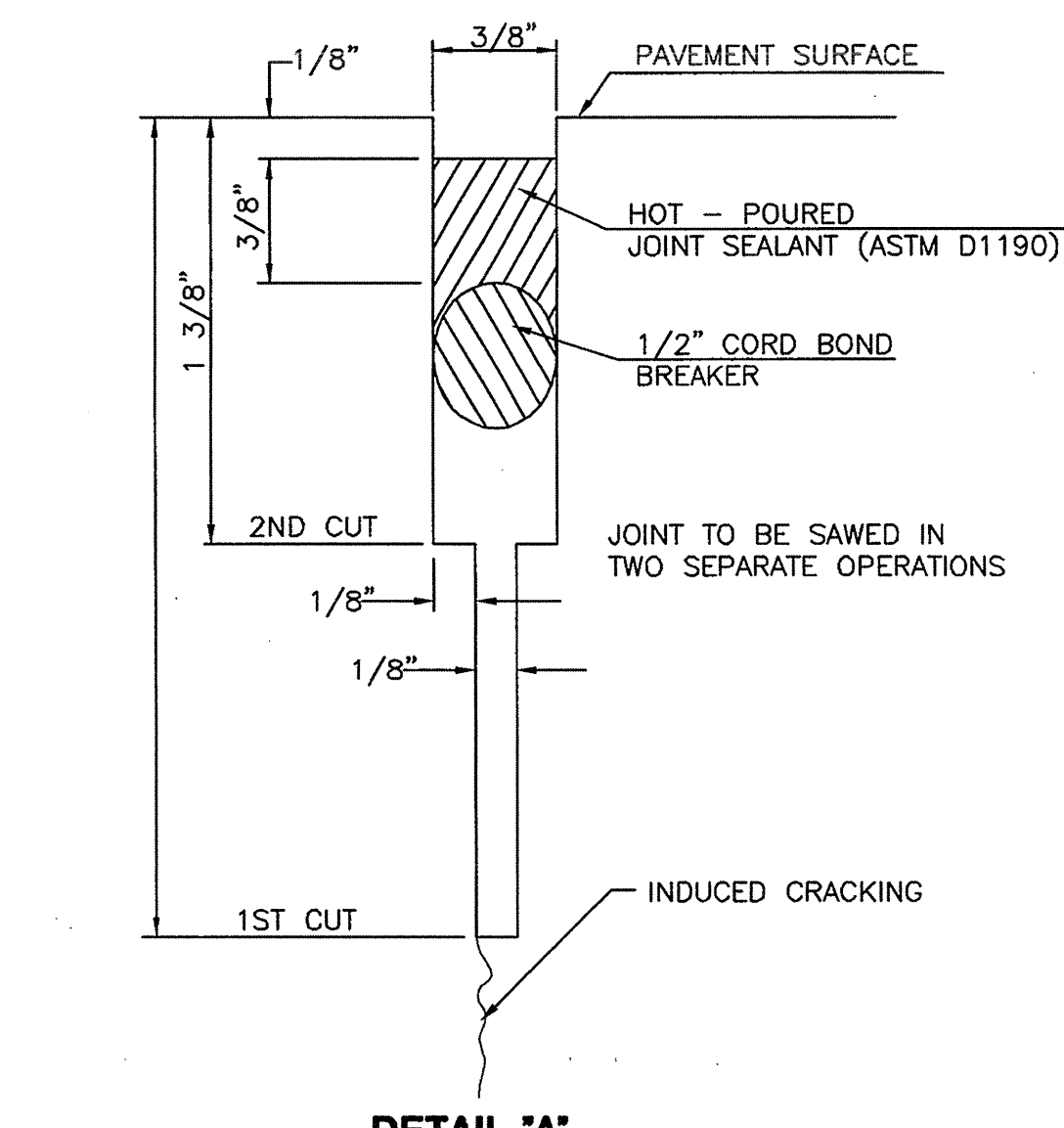
LONGITUDINAL JOINT DETAIL (L.J.)
SCALE: NONE



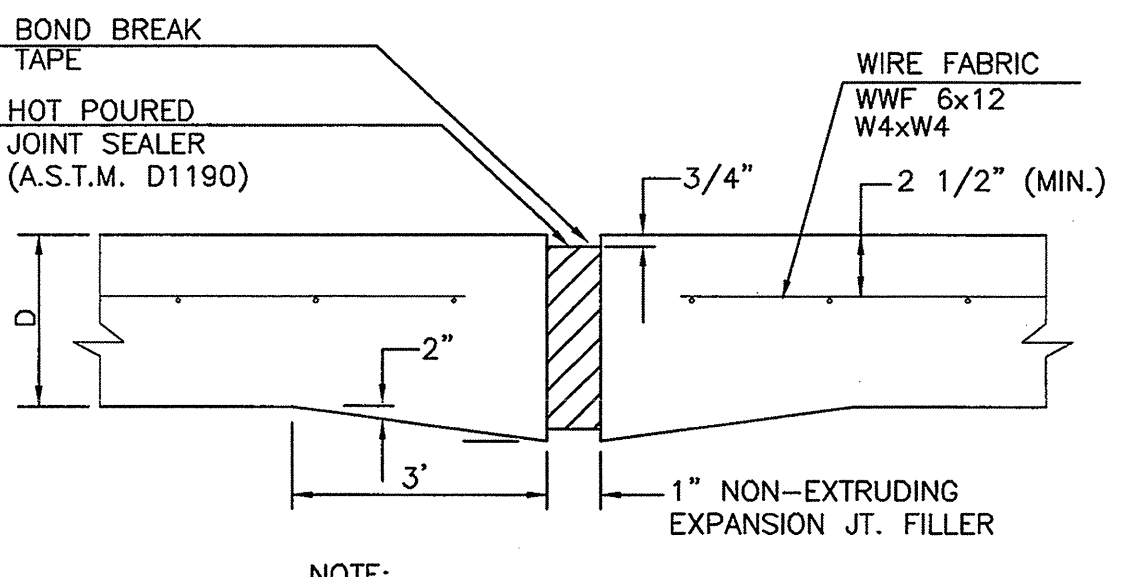
OPTIONAL LONGITUDINAL CONSTRUCTION JOINT (L.J.)
SCALE: NONE (Alternate L.J.)



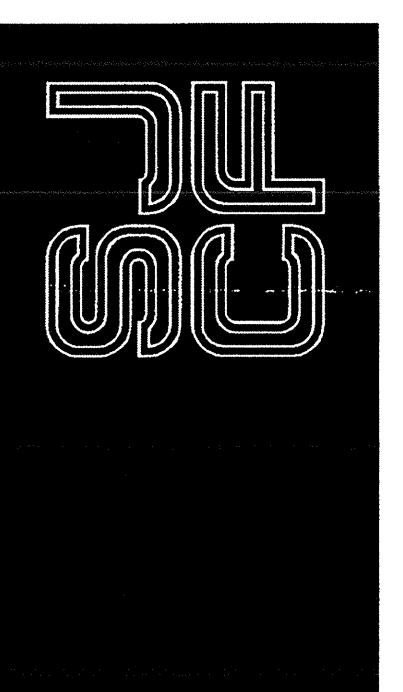
OPTIONAL CONTRACTION CONSTRUCTION JOINT (C.J.)
SCALE: NONE (Alternate C.J.)



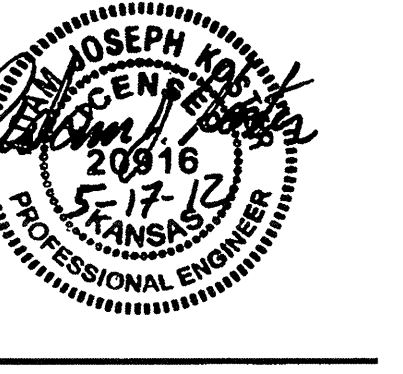
DETAIL 'A'
SCALE: NONE



EXPANSION JOINT
SCALE: NONE



SCHAEFER JOHNSON COX FREY ARCHITECTURE
EMERITA, CO. INC.
267 N. Broadway
Wichita, Kansas
67202-2217
Fax: 316.864.0856
www.sjcf.com
architecture@sjcf.com



GREATER WICHITA YMCA
FARHA SPORTS CENTER ADDITION
3405 S. MERIDIAN
WICHITA, KANSAS 67217

©2006 Schaefer Johnson Cox Frey & Associates, P.A. All Rights Reserved.
These drawings and their contents, including, but not limited to, all concepts, designs, & ideas are the exclusive property of Schaefer Johnson Cox Frey (SJCFF), and may not be used or reproduced in any way without the express consent of SJCFF.

Revisions

1	
2	
3	
4	

Project Number
SJCFF 2913.10

Date
14 MAR 2012

PAVING DETAILS

CS1.4

F:\CHL\06597\DWG\PAVE\06597_071.DWG