

GENERAL NOTES

- UNLESS SHOWN OR STATED OTHERWISE ON THESE DRAWINGS, MATERIALS AND CONSTRUCTION SHALL BE IN ACCORDANCE WITH CITY OF WICHITA STANDARD SPECIFICATIONS.
- CONTRACTOR WILL BE REQUIRED TO PROVIDE A MINIMUM ADVANCE NOTICE OF SEVENTY-TWO (72) HOURS TO UTILITY COMPANIES PRIOR TO STARTING ANY EXCAVATION AS FOLLOWS:
KANSAS ONE-CALL 1-800-344-7233 OR 687-2470 (LOCAL WICHITA)
- THE CONTRACTOR MUST NOTIFY THE FOLLOWING IN CASE OF AN EMERGENCY:
COX COMMUNICATIONS (CABLE) 262-0661
WESTAR (ELECTRIC) 383-8600
KANSAS GAS SERVICE (GAS) 832-3101
SBC (TELEPHONE) 800-870-8390
CITY OF WICHITA WATER & SEWER MAINT. 252-6000
AQUILA (GAS) 946-0096
- THE CONTRACTOR SHALL BE RESPONSIBLE FOR PRESERVING PROPERTY IRONS, THE CONTRACTOR WILL BE REQUIRED TO RE-ESTABLISH ANY ADDITIONAL FUTURE IMPERVIOUS AREA=2.0 AC. ADDITIONAL FUTURE DISTURBED AREA=0.5 AC. TOTAL WQ=0.20+0.17=0.37 AC.-FT. TOTAL CP=0.31+0.25=0.56 AC.-FT.
- EXISTING UTILITIES AND THEIR LOCATIONS, AS SHOWN ON THE PLANS REPRESENT THE BEST INFORMATION OBTAINABLE FOR DESIGN. LOCATION INFORMATION HAS BEEN OBTAINED FROM THE VARIOUS UTILITY COMPANIES AND IS EITHER FROM COMPANY RECORD DRAWINGS OR COMPANY PROVIDED FIELD LOCATIONS. THE PLAN LOCATIONS SHOWN ARE NOT GUARANTEED. ADDITIONAL EXISTING UTILITIES MAY ALSO BE ENCOUNTERED.
- RUBBLE FROM THE REMOVAL OF MISCELLANEOUS STRUCTURES AND EXCESS EXCAVATION WHICH IS TO BE WASTED SHALL BE DISPOSED OF ON SITES TO BE PROVIDED BY THE CONTRACTOR. THESE SITES SHALL BE APPROVED BY THE ENGINEER AS TO SUITABILITY, APPEARANCE AND SITE LOCATION. LOCATIONS THAT, IN THE OPINION OF THE ENGINEER, WILL LEAVE AN UNSIGHTLY APPEARANCE WILL NOT BE APPROVED. ALL DISPOSAL SITES MUST BE APPROVED BY THE KANSAS DEPARTMENT OF HEALTH AND ENVIRONMENT. MATERIAL EITHER STOCKPILED OR DISPOSED OF IN A FLOOD PLAIN WOULD REQUIRE A KANSAS STATE BOARD OF AGRICULTURE PERMIT. ANY MATERIAL DUMPED IN WATERS OF THE UNITED STATES OR WETLANDS IS SUBJECT TO U.S. CORPS OF ENGINEERS PERMITTING REGULATIONS. ANY MATERIAL BURIED OR STOCKPILED BEYOND APPROVED CONSTRUCTION LIMITS WOULD REQUIRE ADDITIONAL ARCHAEOLOGICAL INVESTIGATIONS UNLESS BURIED IN A PREVIOUSLY APPROVED BORROW LOCATION.

**CITY OF WICHITA
PRIVATE PROJECT
NO. 89 PPD (607861)**

APPROVED AS NOTED
BY CITY ENGINEER OF WICHITA

Storm Water
(Public Works) *[Signature]* 6-15-12

Engineering *[Signature]* 5-9-12

NOTE TO CONTRACTORS
Inspection and testing for the waterline is to be provided by a Licensed Consulting Engineering Firm under contract with the Owner/Developer. Said inspection to be in accordance with the City of Wichita Standard Construction Engineering Practices and certified by a Professional Engineer licensed in the state of Kansas. No work shall be performed in dedicated easements or public rights-of-way by the Contractor without such inspection, nor shall any work be commenced without written authorization by the City Engineer. All construction and materials shall comply with the City of Wichita Specifications and Standards (on file and available in the City Engineer's Office).

DISTURBED AREA=2.59 AC.
NEW IMPERVIOUS AREA=2.0 AC.
WQ=0.20 AC.-FT.
CP=0.31 AC.-FT.

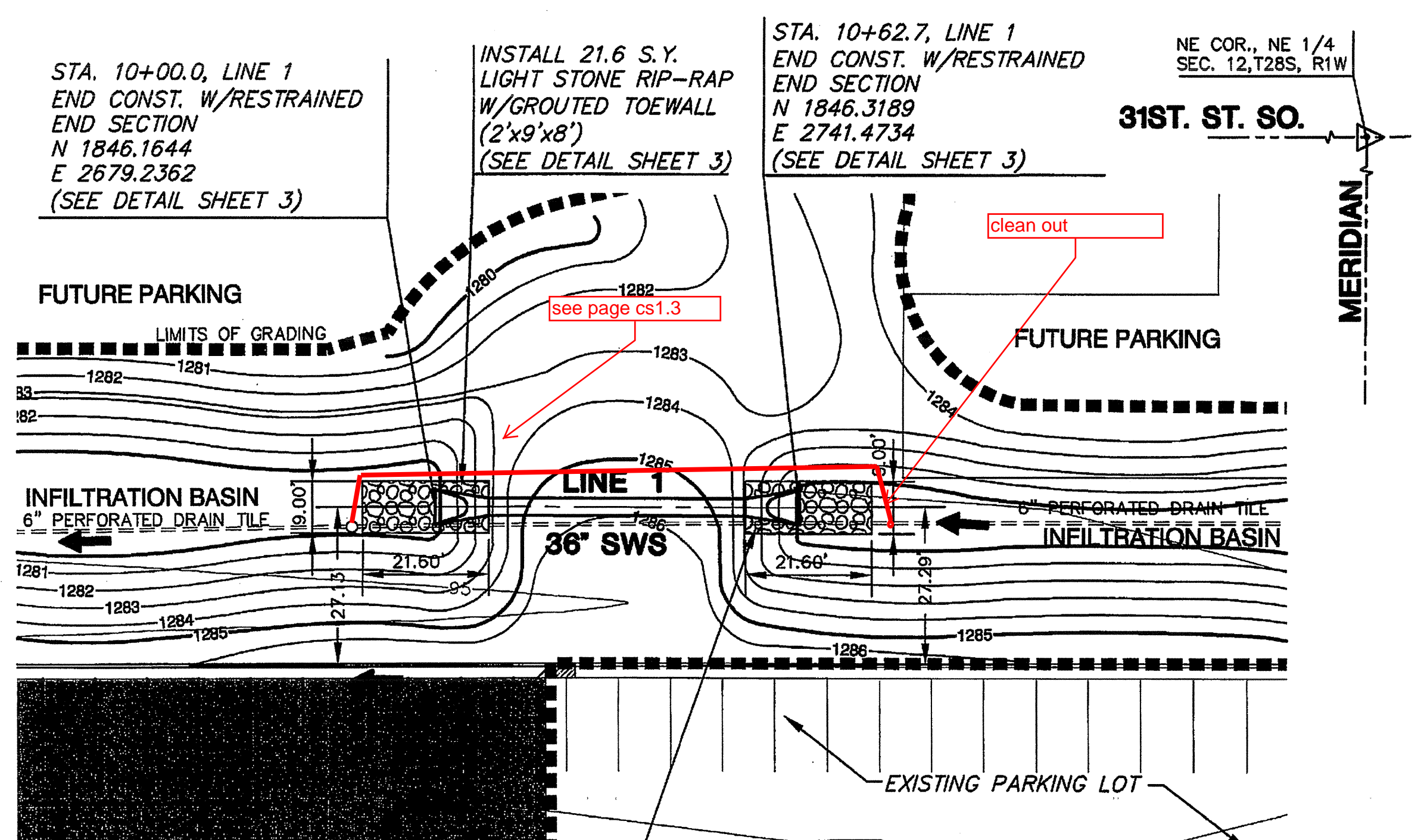
FUTURE PARKING LOT TO THE NORTH
ADDITIONAL FUTURE IMPERVIOUS AREA=1.6 AC.
ADDITIONAL FUTURE DISTURBED AREA=0.5 AC.
TOTAL WQ=0.20+0.17=0.37 AC.-FT.
TOTAL CP=0.31+0.25=0.56 AC.-FT.

AS BUILTS

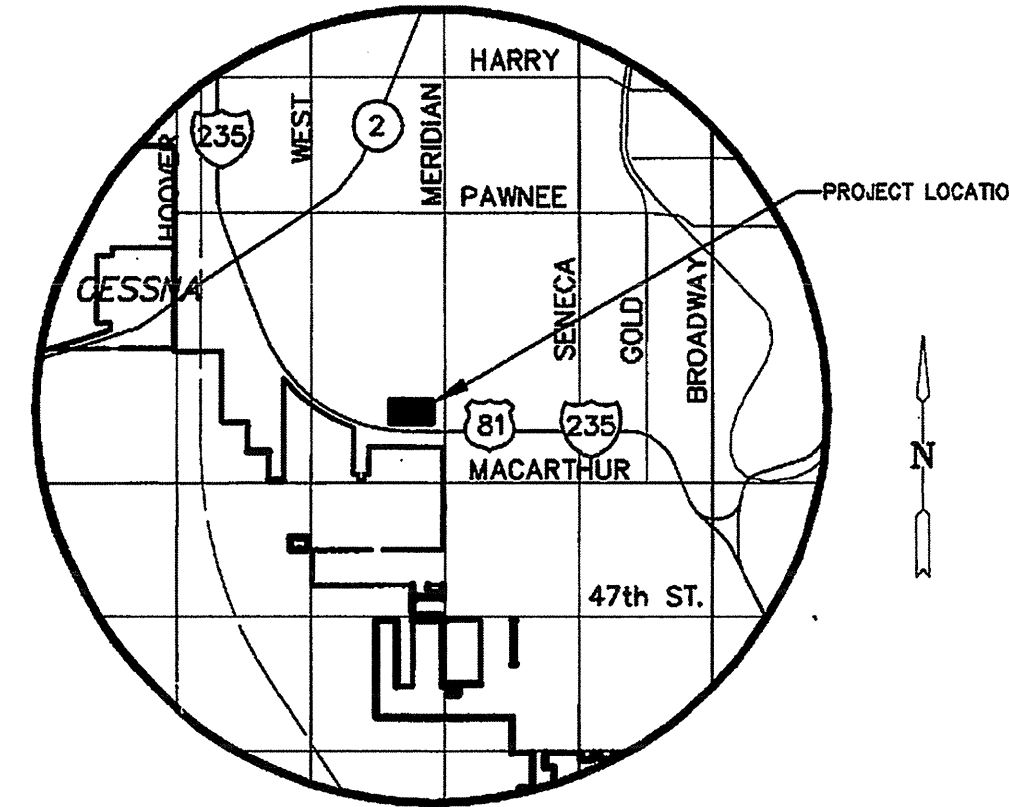
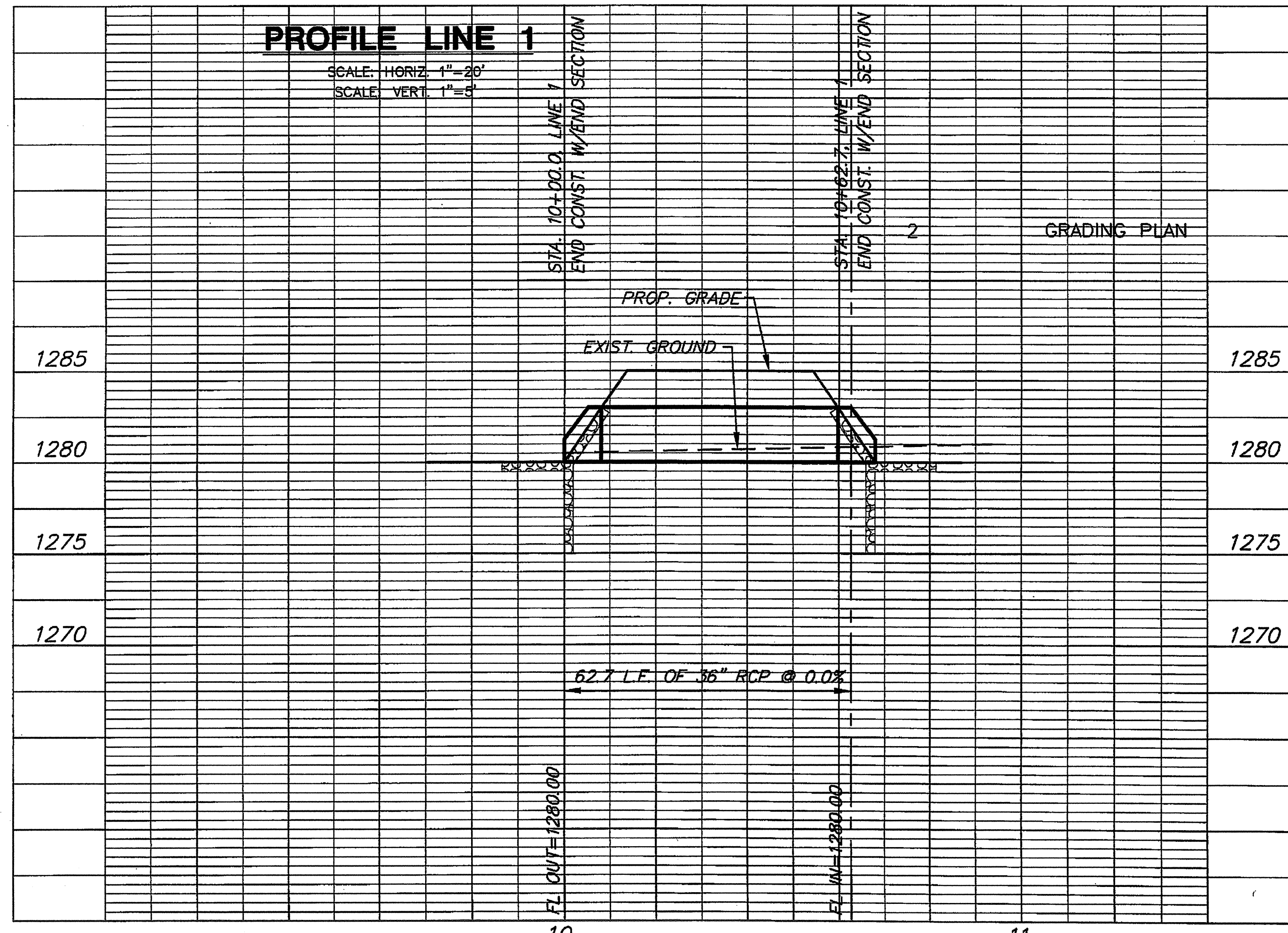
Contractor: McCullough Excavation, Inc.
Project Inspector: Larry Gann

9/11/2012

kemiller engineering



PLAN LINE 1
SCALE: 1"=20'



VICINITY MAP

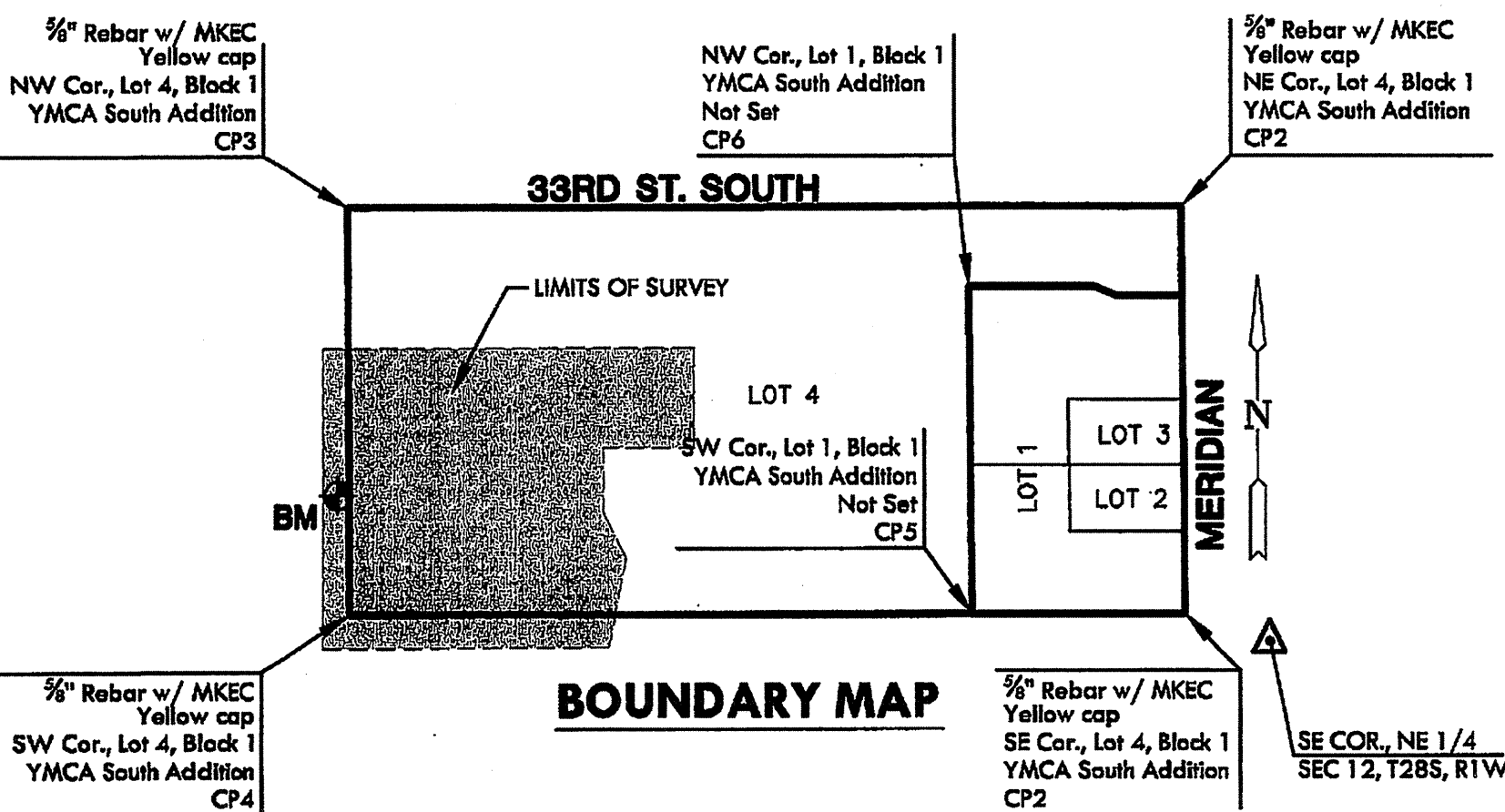
INDEX TO DRAWINGS

SHEET NO.	DESCRIPTION
1	LINE 1
2	GRADING PLAN
3	SITE DETAILS
4	SWS DETAILS
5-9	BMPS
10	FINAL PLAT

BENCHMARK

BM at Northwest corner of Inlet 458 feet north of SW corner Lot 4, Block 1, YMCA South Addition and also being 146 feet north of fire hydrant. ELEV.=1286.78

CONTROL POINT #	NORTHING	EASTING	DESCRIPTION
CP1	N1050.35	E4910.01	SE COR., LOT 4, BLOCK 1 YMCA SOUTH ADDITION
CP2	N2291.19	E4910.02	NE COR., LOT 1, BLOCK 1 YMCA SOUTH ADDITION
CP3	N2311.01	E2360.15	NW COR., LOT 4, BLOCK 1 YMCA SOUTH ADDITION
CP4	N1074.41	E2355.00	SW COR., LOT 1, BLOCK 1 YMCA SOUTH ADDITION
CP5	N1056.48	E4260.03	SW COR., LOT 1, BLOCK 1 YMCA SOUTH ADDITION
CP6	N2051.27	E4260.01	NW COR., LOT 1, BLOCK 1 YMCA SOUTH ADDITION



BOUNDARY MAP

MKEC
ENGINEERING CONSULTANTS, INC.
411 N. WEBB ROAD
WICHITA, KS. 67208
316-684-9600

Professional Engineer Seal for Joseph K. Schaefer, No. 20916, State of Kansas.

**STORM WATER SEWER PLANS FOR
GREATER WICHITA YMCA
SOUTH BRANCH**

LINE 1
SHEET TITLE
06587
PROJECT NUMBER

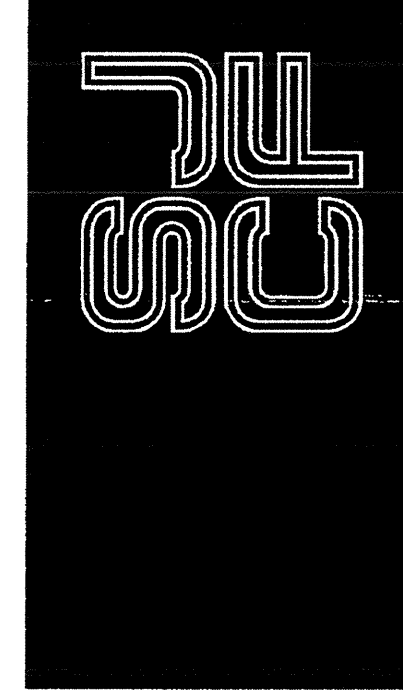
DESIGNED: AJK | DRAWN: DM | CHECKED: GJA

ISSUED: March 2012

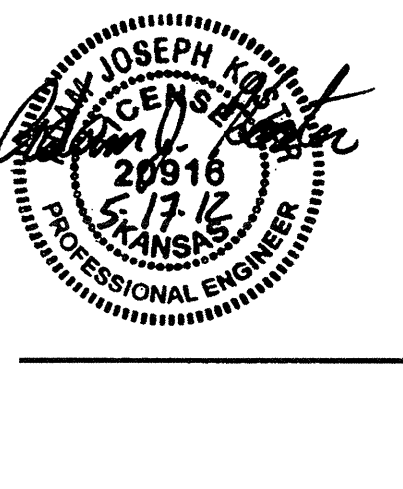
REVISIONS

PROJECT NUMBER: SJCF 2013.10
DATE: 14 MAR 2012
LINE 1

SHEET NO. 1 of 10



SCHAEFER JOHNSON COX FREY ARCHITECTURE
Emprise Center
267 N. Broadway
Wichita, Kansas
Ph. 316.684.0171
Fax. 316.684.8655
www.sjcf.com
architecture@sjcf.com



MKEC
ENGINEERING CONSULTANTS
411 N. WEBB ROAD
WICHITA, KS. 67208
316-684-9600

**GREATER WICHITA YMCA
FARIAH SPORTS CENTER ADDITION**
3405 S. MERIDIAN
WICHITA, KANSAS 67217

©2005
Schaefer Johnson Cox Frey & Associates, P.A.
All Rights Reserved

These drawings and their contents, including, but not limited to, all concepts, designs, notes and the exclusive property of Schaefer Johnson Cox Frey (SJCF), and they may not be used or reproduced in any way without the express consent of SJCF.

Project Number: SJCF 2013.10
Date: 14 MAR 2012

CS2.0