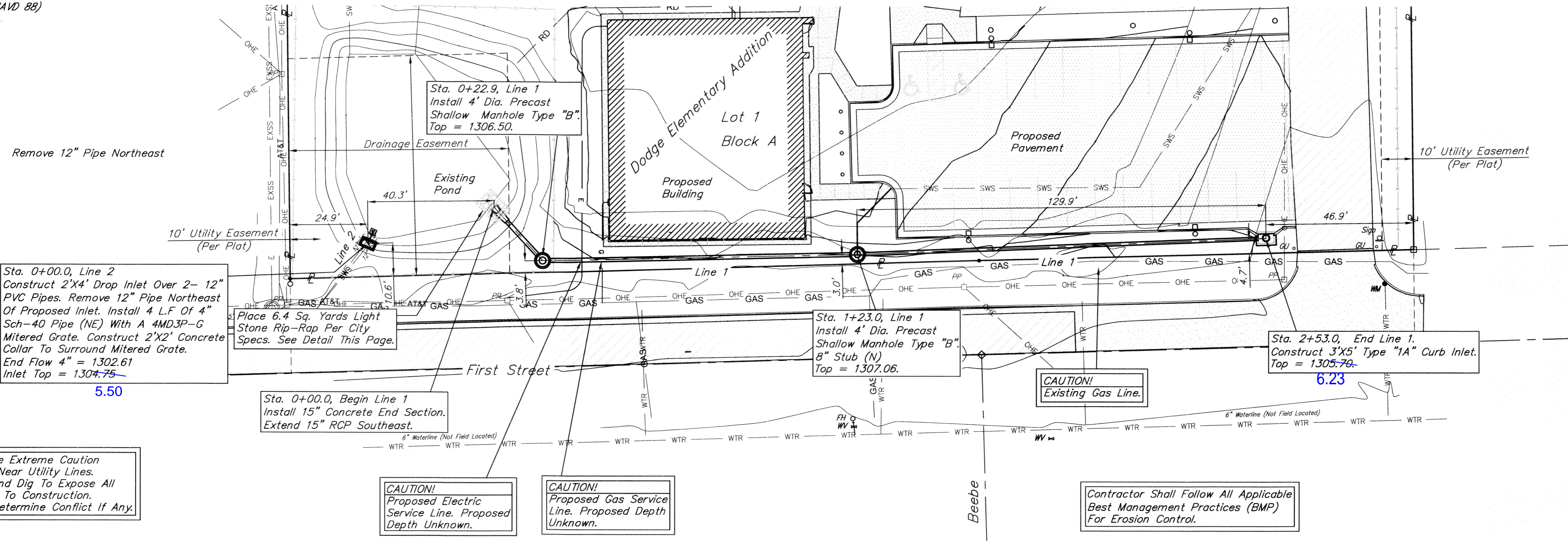


Benchmark

Benchmark- "X" Cut in top of curb SW return.
Elev. = 1305.47 (NAVD 88)



Sta. 0+00.0, Line 2
Construct 2'x4' Drop Inlet Over 2-12" PVC Pipes. Remove 12" Pipe Northeast Of Proposed Inlet. Install 4 L.F. Of 4" Sch-40 Pipe (NE) With A AMD3P-G Mitered Grate. Construct 2'x2' Concrete Collar To Surround Mitered Grate.
End Flow 4" = 1302.61
Inlet Top = 1304.75
5.50

Sta. 0+00.0, Begin Line 1
Install 15" Concrete End Section. Extend 15" RCP Southeast.

Sta. 1+23.0, Line 1
Install 4' Dia. Precast Shallow Manhole Type "B"
8" Stub (N)
Top = 1307.06.

Sta. 2+53.0, End Line 1.
Construct 3'x5' Type "1A" Curb Inlet.
Top = 1305.70.
6.23

Contractor To Use Extreme Caution When Excavating Near Utility Lines. Contractor To Hand Dig To Expose All Utility Lines Prior To Construction. Verify Depth To Determine Conflict If Any.

CAUTION!
Proposed Electric Service Line. Proposed Depth Unknown.

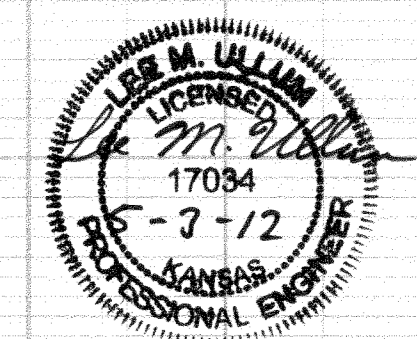
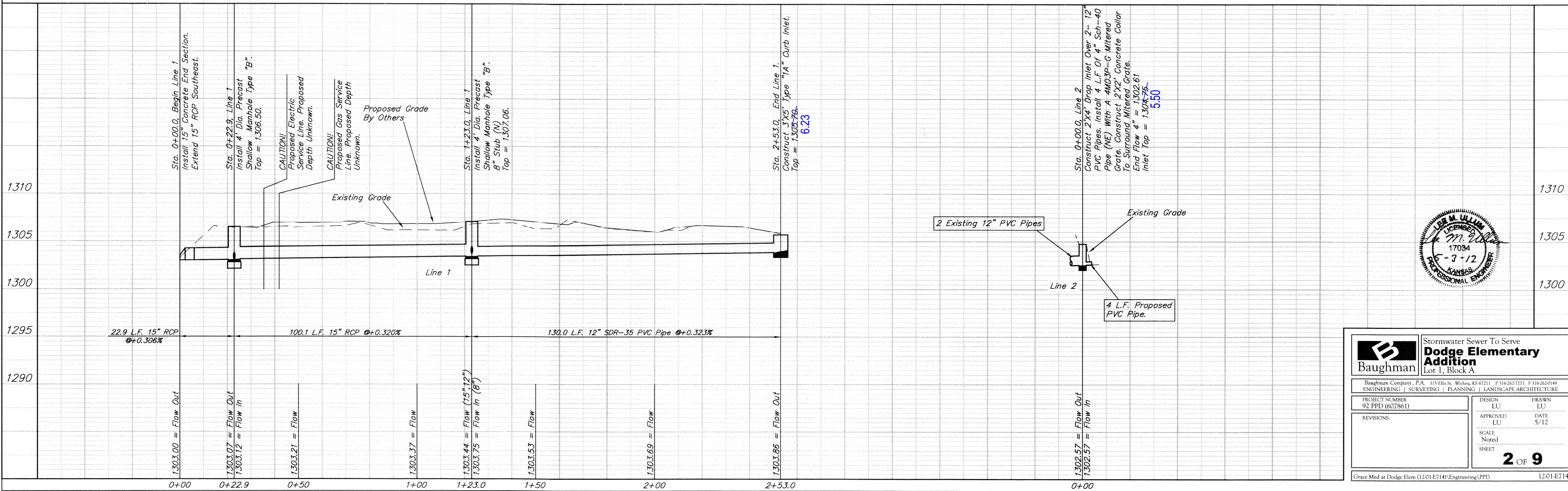
CAUTION!
Proposed Gas Service Line. Proposed Depth Unknown.

Contractor Shall Follow All Applicable Best Management Practices (BMP) For Erosion Control.

TYPICAL SECTION THRU RIPRAP TOEWALL

NOTES:

- TOEWALLS SHALL BE INSTALLED AT LOCATIONS SHOWN IN THE DETAIL.
- GROUTING OF THE SURFACE RIPRAP SHALL NOT BE PERFORMED.
- ALL RIPRAP FOR THIS PROJECT SHALL BE NATURAL STONE. NEITHER CONCRETE, FABRIC ENVELOP, NOR PREMIXED DRY PACKAGE CONC. BAG ALTERNATED WILL BE ALLOWED.
- THE RIPRAP TOEWALL SHALL BE GROUTED IN PLACE FOR THE FULL DEPTH, EXCEPT THE SURFACE.



Baughman Stormwater Sewer To Serve Dodge Elementary Addition Lot 1, Block A

Baughman Company, P.A. 315 Ellis St. Wichita, KS 67211 P 316-262-7271 F 316-262-0149
ENGINEERING | SURVEYING | PLANNING | LANDSCAPE ARCHITECTURE

PROJECT NUMBER 92 PPD (607861)	DESIGN LU	DRAWN LU
REVISIONS:	APPROVED LU	DATE 5/12
SCALE Noted		2 OF 9
SHEET		

Grace Med at Dodge Elem (12-01-E714)\Engineering\PPD 12-01-E714