

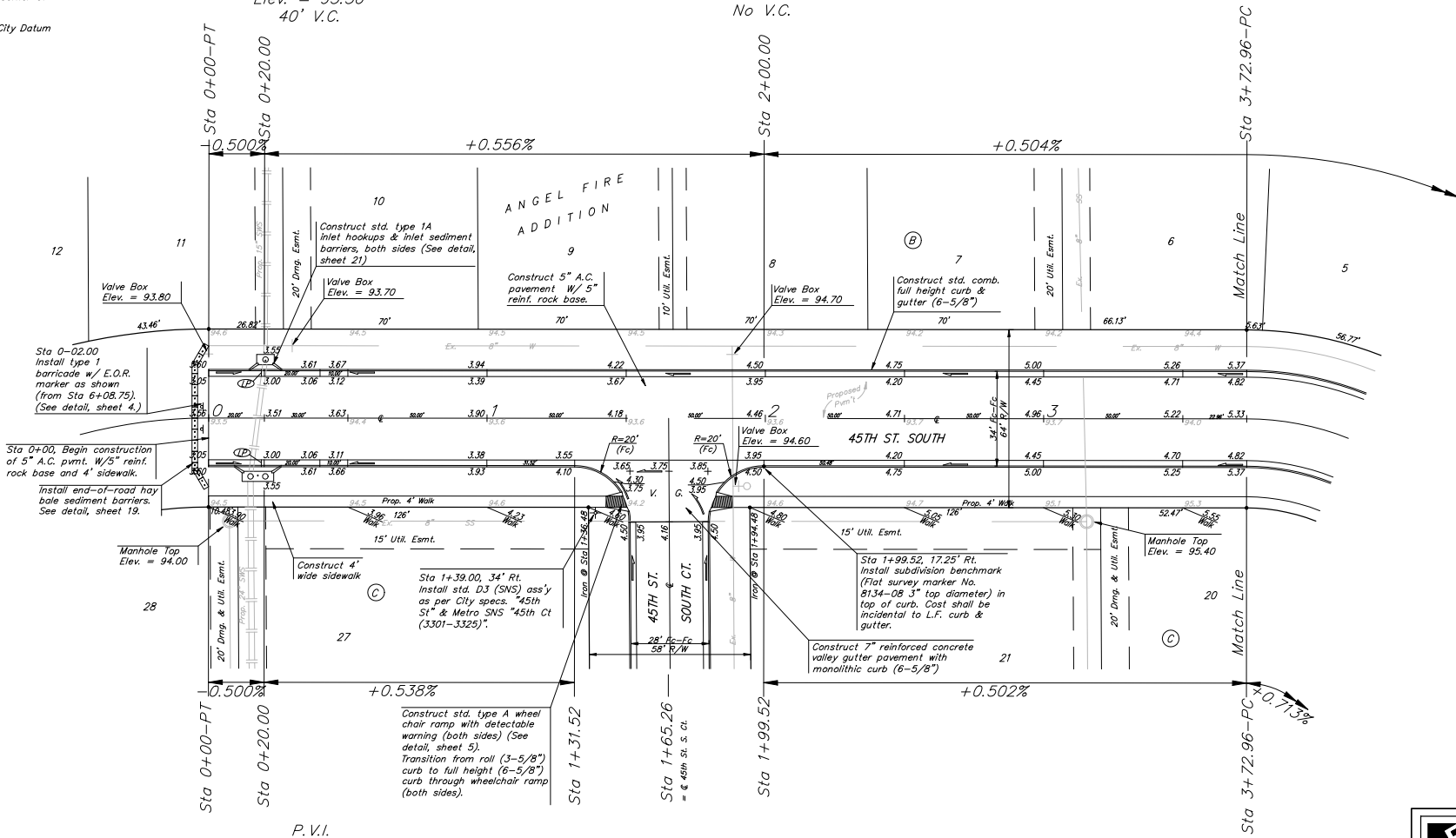
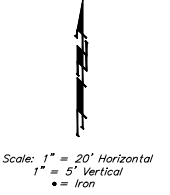
BENCHMARKS:

BM #1: C.O.W. Disc. top of Curb adjacent to FH between Lot's 10 & 11, Block C.
Elevation = 93.70 City Datum

BM #2: City of Wichita Disc adjacent to FH on NE Corner of Leonine & Angel.
Elevation = 92.29 City Datum

P.V.I.
Elev. = 93.50
40' V.C.

P.V.I.
Elev. = 94.50
No V.C.



P.V.I.
Elev. = 93.50
40' V.C.

P.V.I.
Elev. = 95.37
No V.C.

Subdivision Bench Marks

Street & Station	Location Description	Elevation
45th St. South 1+99.52, 17.25' Rt.	Adjacent to Fire Hydrant at E. End of E. Curb Return of 45th St. South & 45th St. South Ct.	

ANGEL FIRE ADDITION - PHASE IV	
45TH ST. SOUTH	
STA 0+00 TO STA 3+72.96	
<small>BAUGHMAN COMPANY, P.A. SURVEYING ENGINEERING SURVEYING PLANNING LANDSCAPE ARCHITECTURE</small>	
PROJECT NUMBER 472-94126	DESIGNER TMS
DATE 02/05	SCALE None
6 OF 24	