

Remove & Replace 25 lf of Pavement
 Remove & Replace 12 lf of Concrete Approach
 Remove & Replace 5 lf of Concrete Sidewalk
 Install 42 lf of Flowable Fill

The original sewer in this alley flowed to the south. In 1949, the current sewer was installed to redirect the flow to the north. There is no record of this change, other than notes written in the Book & Page in Central Inspection. The old sewer pipe is presumed abandoned in place and the exact location is unknown. When laying the new pipe in a straight line between manholes 177 and 004, it's possible that some abandoned sewer could need removed and/or capped off, which shall be subsidiary to the bid item for pipe removal.

Remove 583 lf of 8" Pipe
 Install 583 lf of 8" Pipe
 (new pipe will be a straight line between manholes)

MH 5348-004
 Approx MH depth = 7.1 ft

MH 5348-010
 Remove Manhole
 (manhole not found)

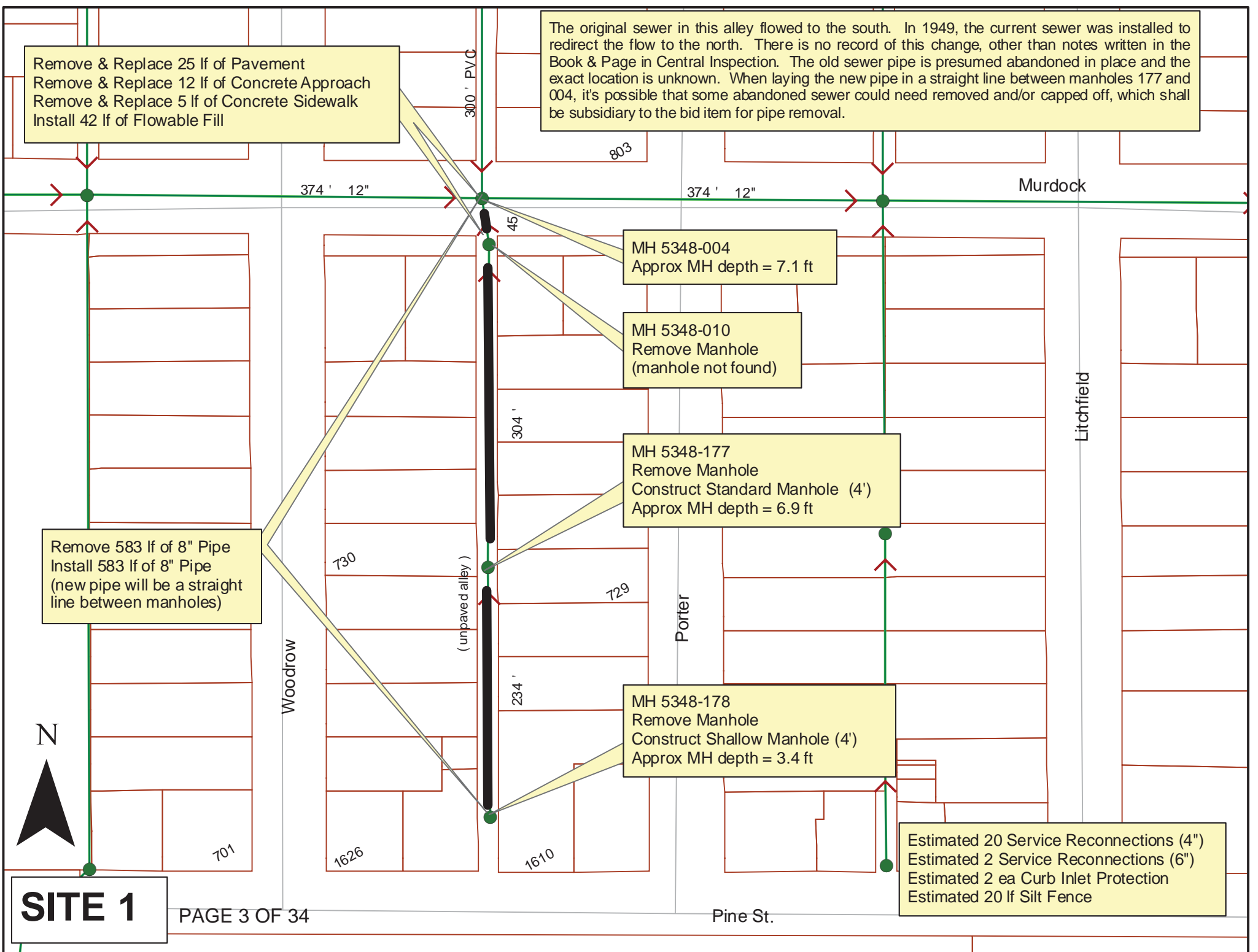
MH 5348-177
 Remove Manhole
 Construct Standard Manhole (4')
 Approx MH depth = 6.9 ft

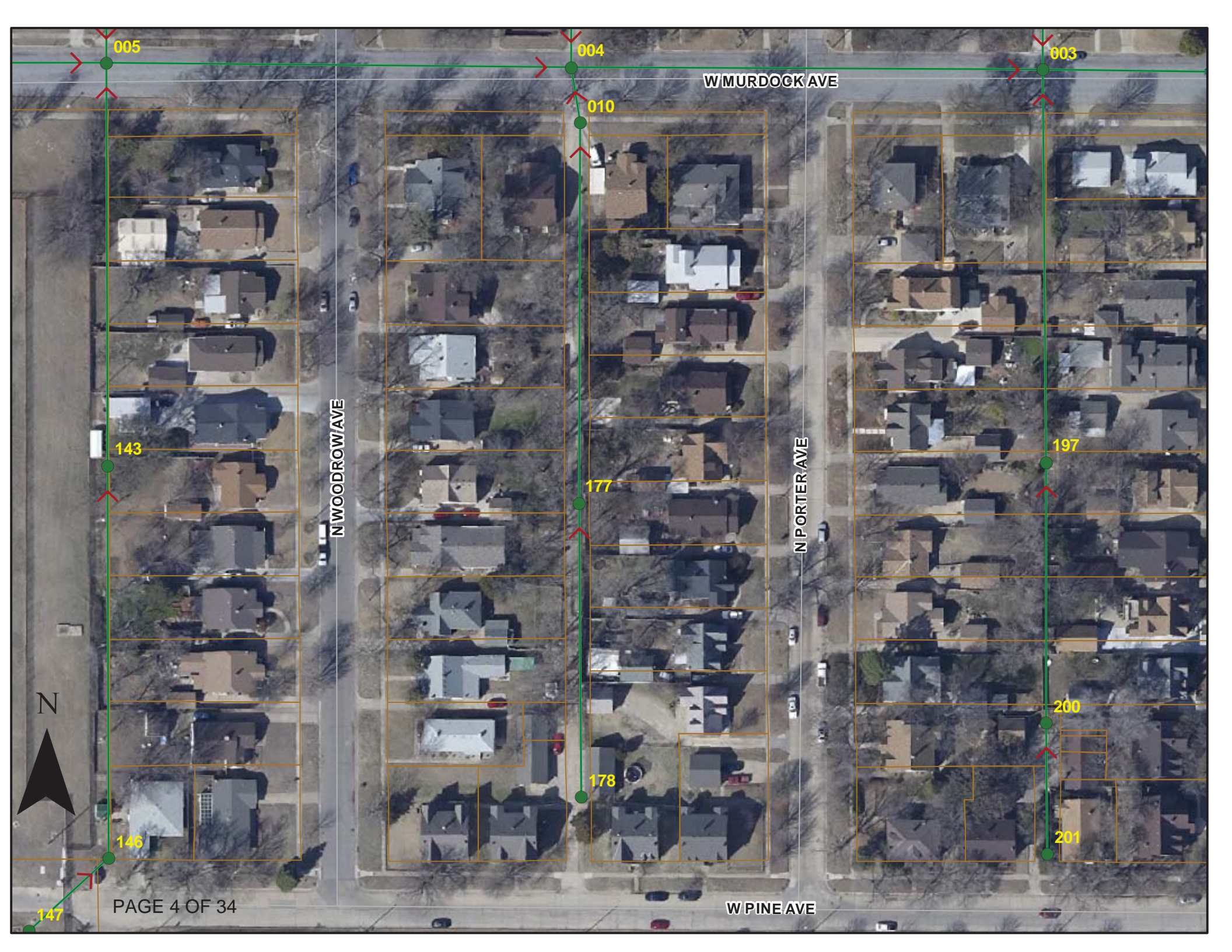
MH 5348-178
 Remove Manhole
 Construct Shallow Manhole (4')
 Approx MH depth = 3.4 ft

Estimated 20 Service Reconnections (4")
 Estimated 2 Service Reconnections (6")
 Estimated 2 ea Curb Inlet Protection
 Estimated 20 lf Silt Fence



SITE 1





005

004

603

WMURDOCK AVE

010

N WOODROW AVE

N PORTER AVE

197

143

177

178

200

201

N



W PINE AVE

147



Television Inspection Master Report

8/16/2010
2:51 PM

US Structure: 5348-178 1610 W PINE ST Date Insp: 6/15/2010 Basin: C03E
 DS Structure: 5348-177 730 N WOODROW ST Dir Televised: Upstream To Downstream

Pipe Information
 Project No.: B-239 Dia/Ht: 8 Material: VCP Length: 232.5 Tape ID: DVD #0585

Obs. #	VTR Counter	Distance	Location	Description	Rating	Ratings			
						Obsrvd (gpm)	Est. (gpm)	Struct Clean	Remain (gpm)
1		0.0		5348-178 US Manhole					
2		3.0	1624 W PINE	W Wye Service	1		(standing water in the pipe at the taps)		
3		7.0		Crack-Horizontal	2	0.002		2	0
4		7.4	1610 W PINE	E Wye Service	1	0.000		0	0
5		7.6		Offset	2	0.000		0	0
6		7.8		Crack-Radial	2	0.002		2	0
7		20.3		Broken Pipe	2	0.008		44	0
8		23.1		Crack-Horizontal	2	0.002		2	0
9		28.7	Joint	Offset	2	0.000		0	0
10		32.4		Crack-Horizontal	2	0.002		2	0
11		38.3		Crack-Radial	2	0.002		2	0
12		50.8		Sag begins	3	0.000		5	0
13		51.5		Sag camera submerged	1	0.000		1	0
14		52.6		Sag	3	0.000		5	0
15		56.0		Broken Pipe	3	0.010		60	0
16		61.1		Sag ends	1	0.000		1	0
17		62.1		Crack-Radial	2	0.002		2	0
18		66.5		Wye Service	1	0.000		0	0
19		74.9	706 N WOODROW	W Break-In Conn	3	0.004		2	0
20		79.8	(almost no water in the pipe here, possible high point)	Crack-Radial	3	0.004		5	0
21		90.4	711 N PORTER	E Wye Service	1	0.000		0	0
22		92.9		Wye Service	1	0.000		0	0
23		97.2		Broken Pipe	2	0.008		44	0
24		103.2		Crack-Horizontal	2	0.002		2	0
25		106.0		Crack-Radial	3	0.004		5	0
26		109.3		Crack-Radial	4	0.008		10	0
27		113.4		Wye Service	1	0.000		0	0
28		115.3	718 N WOODROW	Wye Service	1	0.000		0	0
29		120.3		Broken Pipe	2	0.008		44	0
30		123.4		Crack-Horizontal	2	0.002		2	0
31		132.3		Crack-Horizontal	2	0.002		2	0
32		132.6		Crack-Radial	2	0.002		2	0



Television Inspection Master Report

8/16/2010
2:51 PM

US Structure: 5348-178 1610 W PINE ST Date Insp: 6/15/2010 Basin: C03E
 DS Structure: 5348-177 730 N WOODROW ST Dir Televised: Upstream To Downstream

33	139.5		Wye Service	1	0.000	0	0	0.000
34	140.5		Broken Pipe	3	0.010	60	0	0.010
35	141.4	722 N WOODROW / abandoned???	Wye Service	5	broken down / could be abandoned			
36	143.6	722 N WOODROW	Break-In Conn	4	0.008	60	0	0.008
37	161.4		Crack-Radial	2	0.002	2	0	0.002
38	164.4		Crack-Radial	2	0.002	2	0	0.002
39	165.6		Wye Service	1	0.000	0	0	0.000
40	168.2		Wye Service	1	0.000	0	0	0.000
41	169.4		Crack-Horizontal	2	0.002	2	0	0.002
42	172.4		Crack-Radial	2	0.002	2	0	0.002
43	178.1		Crack-Radial	2	0.002	2	0	0.002
44	184.0	Joint	Offset	2	0.000	0	0	0.000
45	184.5	(water stands in the pipe)	Crack-Radial	2	0.002	2	0	0.002
46	187.4		Crack-Radial	2	0.002	2	0	0.002
47	191.0	726 N WOODROW / roots inside	Wye Service	2	0.000	0	0	0.000
48	195.4	Joint	Offset	2	0.000	0	0	0.000
49	198.9	Infiltration at joint	Infiltration	3	0.000	0	0	0.000
50	199.0		Broken Pipe	2	0.008	44	0	0.008
51	199.6	723 N PORTER	Wye Service	1	0.000	0	0	0.000
52	204.3		Broken Pipe	2	0.008	44	0	0.008
53	206.9	Joint	Offset	2	0.000	0	0	0.000
54	214.6		Wye Service	1	0.000	0	0	0.000
55	215.6		Crack-Radial	2	0.002	2	0	0.002
56	217.2		Wye Service	1	0.000	0	0	0.000
57	218.0	Pipe deflects right, at joint	Offset	4	0.030	60	0	0.030
58	218.7		Crack-Radial	2	0.002	2	0	0.002
59	221.0	Pipe deflects right again, at joint	Offset	3	0.010	20	0	0.010
60	224.0	Slight deflect left, at joint	Offset	3	0.010	20	0	0.010
61	226.9	Big deflect to the left, at joint	Offset	5	0.030	60	0	0.030
62	227.2		Crack-Radial	4	0.008	10	0	0.008
63	229.9	Joint	Offset	3	0.010	20	0	0.010
64	230.5		Crack-Radial	2	0.002	2	0	0.002
65	232.9	Joint	Offset	3	0.010	20	0	0.010
66	235.2		5348-177 DS Manhole					

Line has poor grade. Connections are in poor condition.



Television Inspection Master Report

8/16/2010
2:51 PM

US Structure: 5348-177 730 N WOODROW ST Date Insp: 6/16/2010 Basin: C03E
 DS Structure: 5348-010 1615 W MURDOCK AVE Dir Televised: Upstream To Downstream

Pipe Information
 Project No. : B-239 Dia/Ht: 8 Material: VCP Length: 299.0 Slope: 0.400 Tape ID: DVD #0585

Obs. #	VTR Counter	Distance	Location	Description	Rating	Ratings			
						Obsrvd (gpm)	Est. (gpm)	Struct Clean	Remain (gpm)
1		0.0		5348-177 US Manhole					
2		7.0		Wye Service	1	0.000	0	0	0.000
3		7.4		Broken Pipe	2	0.008	44	0	0.008
4		8.2	730 N WOODROW	Wye Service	1	0.000	0	0	0.000
5		8.8	729 N PORTER / poor cond.	Break-In Conn	4	0.008	60	0	0.008
6		9.7		Broken Pipe	4	0.030	78	0	0.030
7		13.0		Crack-Radial	3	0.004	5	0	0.004
8		16.6		Crack-Horizontal	2	0.002	2	0	0.002
9		18.4		Roots	3	0.008	5	8	0.008
10		21.7		Roots	3	0.008	5	8	0.008
11		24.6		Roots	2	0.004	2	4	0.004
12		24.9		Crack-Radial	2	0.002	2	0	0.002
13		27.9		Roots	2	0.004	2	4	0.004
14		29.4		Wye Service	1	0.000	0	0	0.000
15		30.1		Roots	2	0.004	2	4	0.004
16		32.1		Wye Service	1	0.000	0	0	0.000
17		33.6		Broken Pipe	3	0.010	60	0	0.010
18		39.4		Crack-Radial	2	0.002	2	0	0.002
19		42.2		Broken Pipe	3	0.010	60	0	0.010
20		45.3		Crack-Radial	2	0.002	2	0	0.002
21		47.0	733 N PORTER / PVC	Break-In Conn	1	0.001	0	0	0.001
22		49.4		Wye Service	1	0.000	0	0	0.000
23		50.8		Crack-Radial	2	0.002	2	0	0.002
24		53.8		Crack-Horizontal	2	0.002	2	0	0.002
25		55.0		Wye Service	1	0.000	0	0	0.000
26		56.8	736 N WOODROW	Wye Service	3	0.000	2	0	0.000
27		61.8	Hole in the service line, just past the connection to the city's wye.						
28		62.3		Crack-Horizontal	2	0.002	2	0	0.002
29		73.7		Crack-Radial	3	0.004	5	0	0.004
30		76.7		Crack-Radial	2	0.002	2	0	0.002
31		80.9		Crack-Radial	2	0.002	2	0	0.002
32		82.4		Wye Service	1	0.000	0	0	0.000
				Broken Pipe	2	0.008	44	0	0.008

Using the cleaner to pull down water so we can see the observations / poor grade on the pipe.



Wichita Water Utilities — Connect With Us!

Television Inspection Master Report

8/16/2010
2:51 PM

US Structure: 5348-177
DS Structure: 5348-010

730 N WOODROW ST
1615 W MURDOCK AVE

Date Insp: 6/16/2010
Dir Televised: Upstream To Downstream

Basin: C03E

33	83.4		Wye Service	1	0.000	0	0	0.000
34	90.9		Crack-Horizontal	1	0.001	1	0	0.001
35	93.2	Joint	Offset	2	0.000	0	0	0.000
36	102.1	Joint	Offset	3	0.010	20	0	0.010
37	103.9	737 N PORTER / cracked	Wye Service	2	0.000	0	0	0.000
38	106.4		Wye Service	1	0.000	0	0	0.000
39	107.2	Joint	Offset	2	0.000	0	0	0.000
40	110.2	Joint	Offset	2	0.000	0	0	0.000
41	113.1	Joint	Offset	2	0.000	0	0	0.000
42	116.1	Joint	Offset	2	0.000	0	0	0.000
43	125.3	Joint	Offset	3	0.010	20	0	0.010
44	128.1	Joint	Offset	2	0.000	0	0	0.000
45	129.9		Wye Service	1	0.000	0	0	0.000
46	130.6	Joint	Offset	3	0.010	20	0	0.010
47	132.4	740 N WOODROW	Wye Service	1				connection is offset outside of the main
48	145.2	Joint	Offset	2	0.000	0	0	0.000
49	148.9		Broken Pipe	2	0.008	44	0	0.008
50	153.4	Joint	Offset	3	0.010	20	0	0.010
51	156.3	Joint	Offset	2	0.000	0	0	0.000
52	157.4	746 N WOODROW / PVC	Break-In Conn	1	0.001	0	0	0.001
53	159.9	745 N PORTER / PVC	Break-In Conn	4	0.008	60	0	0.008
54	176.5	Joint	Offset	3	0.010	20	0	0.010
55	178.3		Wye Service	2	0.000	0	0	0.000
56	180.9		Wye Service	1	0.000	0	0	0.000
57	186.6	Joint	Offset	2	0.000	0	0	0.000
58	194.1	Joint	Offset	2	0.000	0	0	0.000
59	196.4	Joint	Offset	3	0.010	20	0	0.010
60	206.9	Joint Offset	PVC begins	2	0.000	0	0	0.000
61	208.0	748 N WOODROW / PVC	Break-In Conn	1	0.001	0	0	0.001
62	208.1	751 N PORTER / PVC	Break-In Conn	1	0.001	0	0	0.001
63	209.5	Joint	PVC ends	1	0.000	0	0	0.000
64	210.8	Joint	Offset	3	0.010	20	0	0.010
65	211.1		Crack-Radial	2	0.002	2	0	0.002
66	216.3	Joint	Offset	2	0.000	0	0	0.000
67	218.8	Joint	Offset	2	0.000	0	0	0.000
68	220.5	752 N WOODROW	Wye Service	1	0.000	0	0	0.000
69	221.8		Crack-Horizontal	2	0.002	2	0	0.002
70	226.5		Crack-Radial	2	0.002	2	0	0.002

(pipe sways slightly left & right, also up and down / poor grade)

US Structure: 5348-177 730 N WOODROW ST Date Insp: 6/16/2010 Basin: C03E
 DS Structure: 5348-010 1615 W MURDOCK AVE Dir Televised: Upstream To Downstream

71	231.2	Joint		Offset	3	0.010	20	0	0.010
72	231.7		Crack-Horizontal		2	0.002	2	0	0.002
73	232.4	753 N PORTER	Break-In Conn		3	0.004	2	0	0.004
74	233.3	754 N WOODROW	Break-In Conn		4	0.008	60	0	0.008
75	236.4		Offset		3	0.010	20	0	0.010
76	236.8		Broken Pipe		2	0.008	44	0	0.008
77	239.2		Crack-Radial		2	0.002	2	0	0.002
78	241.5		Broken Pipe		4	0.030	78	0	0.030
79	244.3		Offset		3	0.010	20	0	0.010
80	244.7		Crack-Radial		2	0.002	2	0	0.002
81	247.6		Crack-Radial		3	0.004	5	0	0.004
82	250.3		Broken Pipe		3	0.010	60	0	0.010
83	250.3		Broken Pipe		3	0.010	60	0	0.010
84	253.3	Joint	Offset		3	0.010	20	0	0.010
85	253.9		Broken Pipe		3	0.010	60	0	0.010
86	256.6		Crack-Radial		2	0.002	2	0	0.002
87	256.6		Crack-Horizontal		2	0.002	2	0	0.002
88	259.6		Broken Pipe		3	0.010	60	0	0.010
89	262.5		Broken Pipe		4	0.030	78	0	0.030
90	265.6		Broken Pipe		3	0.010	60	0	0.010
91	268.1		Broken Pipe		2	0.008	44	0	0.008
92	271.5		Broken Pipe		2	0.008	44	0	0.008
93	274.3		Crack-Horizontal		2	0.002	2	0	0.002
94	276.9	Joint	Offset		3	0.010	20	0	0.010
95	277.4		Broken Pipe		3	0.010	60	0	0.010
96	280.2		Crack-Radial		3	0.004	5	0	0.004
97	289.3	1617 W MURDOCK / PVC	Break-In Conn		1	0.001	0	0	0.001
98	292.5		Broken Pipe		2	0.008	44	0	0.008
99	295.4		Broken Pipe		4	0.030	78	0	0.030
100	295.4	Joint	Offset		4	0.030	60	0	0.030
101	298.4	Joint	Offset		2	0.000	0	0	0.000
102	298.6	<i>(pipe is going uphill slightly as we come toward MH 5348-010)</i>			3	0.010	60	0	0.010
103	304.2		Broken Pipe		3	0.010	60	0	0.010
			5348-010 DS Manhole		4	0.000	0	0	0.000

Poor condition. Poor grade.



Television Inspection Master Report

8/16/2010
2:51 PM

US Structure: **5348-010** 1615 W MURDOCK AVE Date Insp: 6/16/2010 Basin: **C03E**
 DS Structure: **5348-004** 1617 W MURDOCK ST Dir Televised: Upstream To Downstream

Pipe Information
 Project No. : B-239 Dia: 8 Material: VCP Length: 45.0

Obs. #	VTR Counter	Distance	Location	Description	Rating	Ratings				
						Obsrvd (gpm)	Est. (gpm)	Struct Clean	Remain (gpm)	
1		0.0		5348-010 US Manhole	2	0.000	0	0	0.000	
It looks as though MH 5348-010 is sitting lower than the outgoing pipe. The manhole has no trough.										
2		2.5	Joint	Offset	3	0.010	20	0	0.010	
Pipe immediately deflects to the left.										
3		2.5		Crack-Radial	3	0.004	5	0	0.004	
4		5.4		Crack-Radial	3	0.004	5	0	0.004	
5		8.8		Broken Pipe	2	0.008	44	0	0.008	
6		10.6	Invert is busted	Crack-Radial	4	0.008	10	0	0.008	
7		19.8		Broken Pipe	3	0.010	60	0	0.010	
8		24.5		Broken Pipe	3	0.010	60	0	0.010	
9		30.3	Joint	Offset	3	0.010	20	0	0.010	
10		30.7		Crack-Horizontal	2	0.002	2	0	0.002	
11		36.2	Joint	Offset	3	0.010	20	0	0.010	
12		39.4		Crack-Horizontal	2	0.002	2	0	0.002	
13		42.6		5348-004 DS Manhole	3	0.000	0	0	0.000	