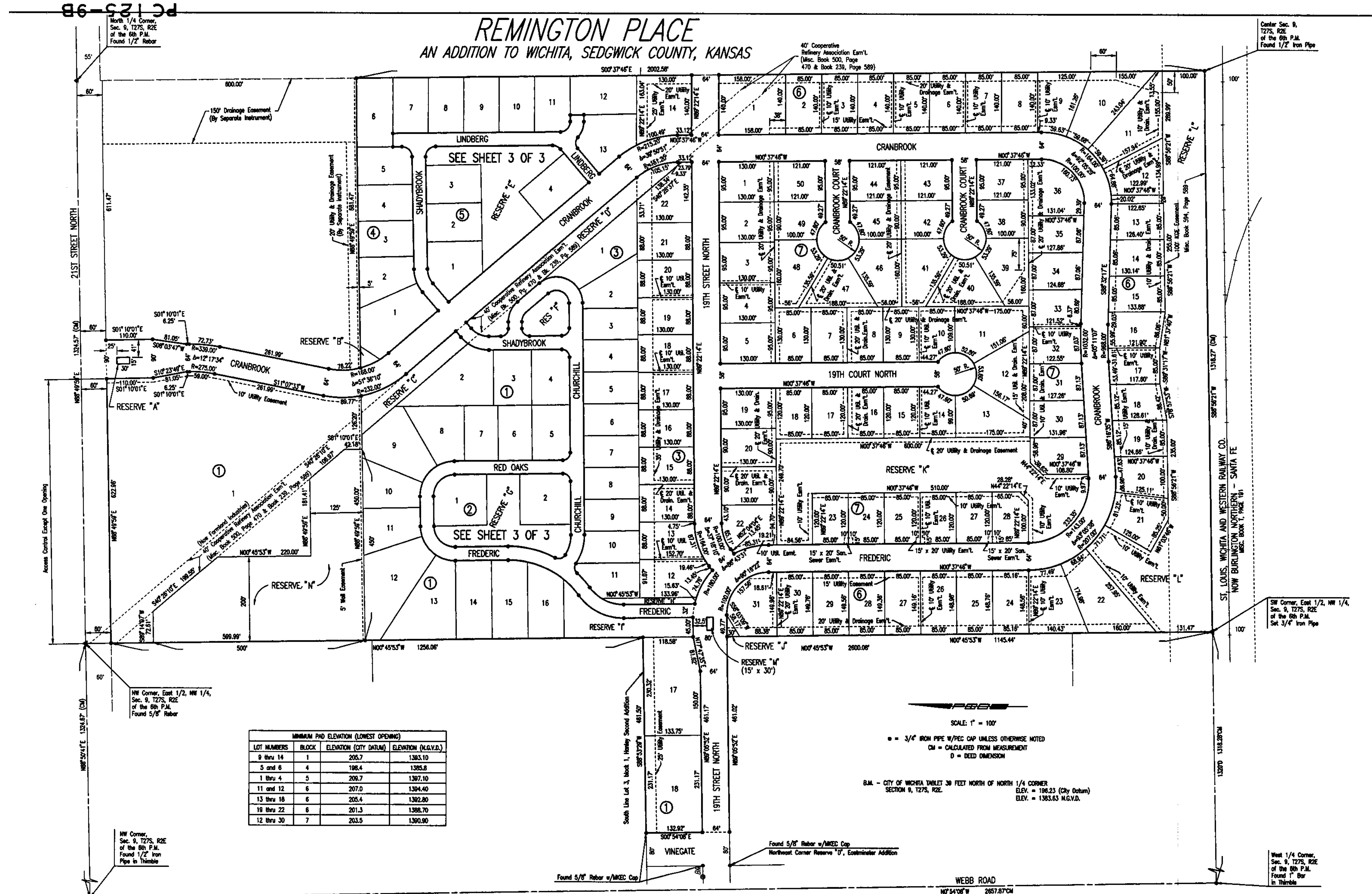


**REMINGTON PLACE**  
AN ADDITION TO WICHITA, SEDGWICK COUNTY, KANSAS



MINIMUM PAD ELEVATION (LOWEST OPENING)

LOT NUMBERS	BLOCK	ELEVATION (CITY DATUM)	ELEVATION (M.G.V.D.)
8 thru 14	1	205.7	1383.10
5 and 6	4	198.4	1385.8
1 thru 4	5	206.7	1397.10
11 and 12	6	207.0	1394.40
13 thru 16	6	205.4	1392.80
10 thru 22	6	201.3	1388.70
12 thru 30	7	203.5	1390.90

SCALE: 1" = 100'  
 ● = 3/4" IRON PIPE W/PEC CAP UNLESS OTHERWISE NOTED  
 CM = CALCULATED FROM MEASUREMENT  
 D = DEED DIMENSION  
 B.M. - CITY OF WICHITA TABLE 38 FEET NORTH OF NORTH 1/4 CORNER  
 SECTION 9, T27S, R2E  
 ELEV. = 198.23 (City Datum)  
 ELEV. = 1383.63 M.G.V.D.

North 1/4 Corner,  
Sec. 9, T27S, R2E  
of the 6th P.M.  
Found 1/2" Rebar

NW Corner, East 1/2, NW 1/4,  
Sec. 9, T27S, R2E  
of the 6th P.M.  
Found 5/8" Rebar

NW Corner,  
Sec. 9, T27S, R2E  
of the 6th P.M.  
Found 1/2" Iron  
Pipe in Thumb

Center Sec. 9,  
T27S, R2E  
of the 6th P.M.  
Found 1/2" Iron Pipe

SW Corner, East 1/2, NW 1/4,  
Sec. 9, T27S, R2E  
of the 6th P.M.  
Set 3/4" Iron Pipe

**SANITARY SEWER PLANS FOR**  
**LATERAL 59, MAIN 24, WAR INDUSTRIES SEWER**  
**TO SERVE REMINGTON PLACE ADDITION**

**PLAT**  
SHEET TITLE  
**1201010125**  
PROJECT NUMBER

**SPE | BKS | BLB**  
DESIGNED DRAWN CHECKED

ISSUED  
**August 2012**  
REVISED

SHEET NO.  
**9 of 9**