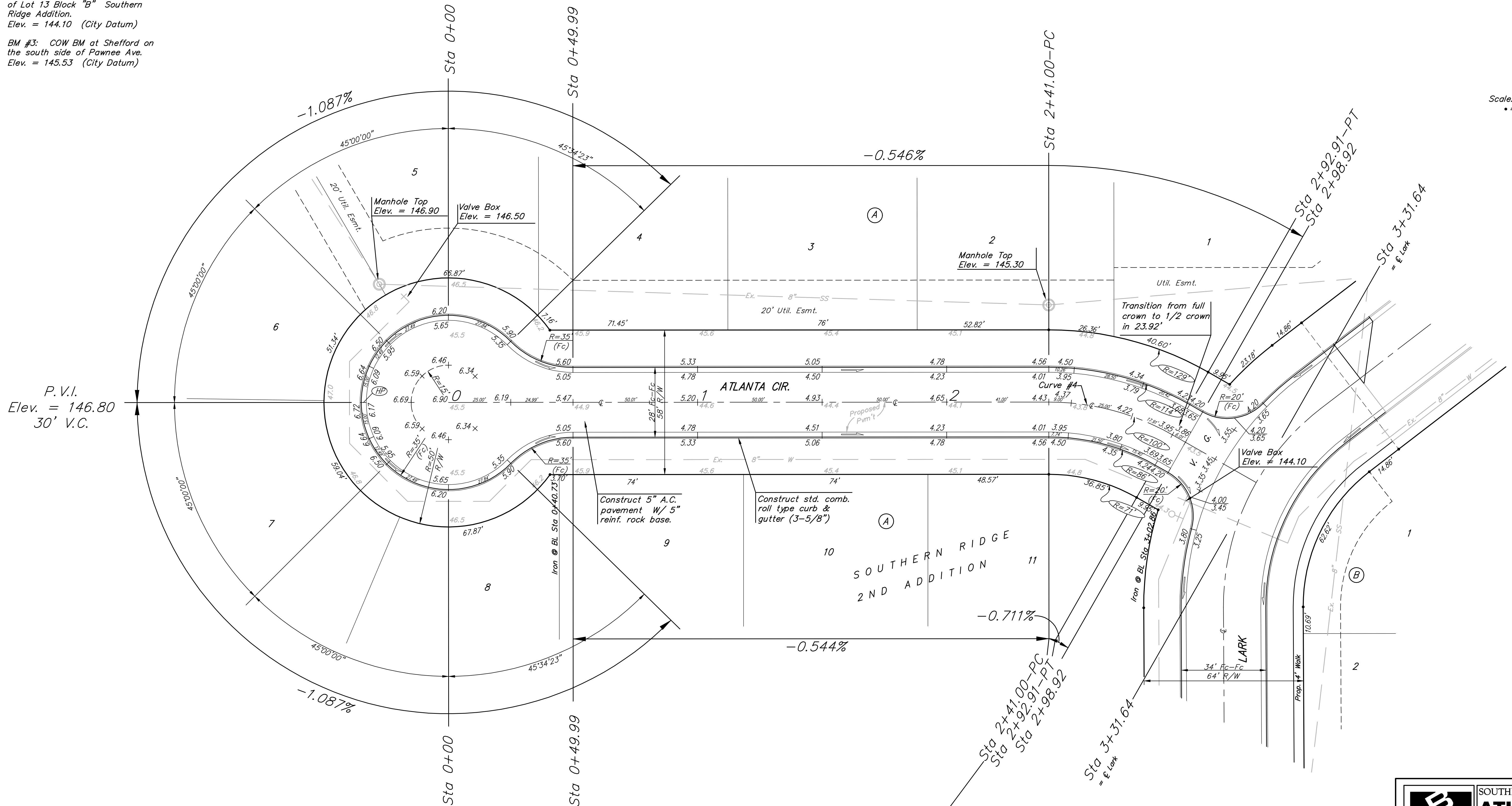
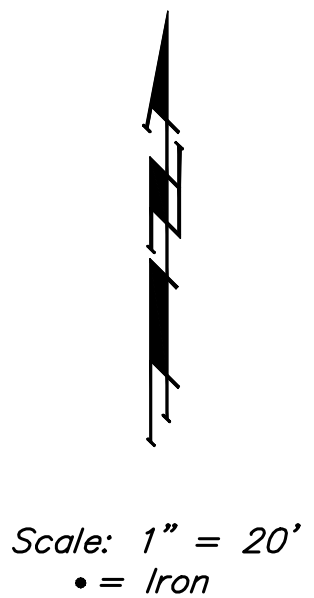


BENCHMARKS:
 BM #1: COW Disc at South West Corner of the Intersection of Lark & Atlanta.
 Elev. = 145.20 (City Datum)

BM #2: COW Disc at North West side of Westgate at South End of Lot 13 Block "B" Southern Ridge Addition.
 Elev. = 144.10 (City Datum)

BM #3: COW BM at Shefford on the south side of Pawnee Ave.
 Elev. = 145.53 (City Datum)



P.V.I.
 Elev. = 146.80
 30' V.C.

P.V.I.
 Elev. = 144.56
 No V.C.

Curve #4
 Curve Data Based on Centerline
 Rad. = 100' Delta = 29° 44' 22" Tangent = 26.55'
 Arc = 51.91' L.C. = 51.32' Def/Ft. = 17.18712 Min.

Station	Arc	FACE CHORD LENGTHS		Defl.	T. Defl.
		8' Lt.	8' Rt.		
2+41.00	—	—	—	0°00'00"	0°00'00"
2+50.00	9.00'	10.98'	7.02'	2°34'41"	2°34'41"
2+75.00	25.00'	30.42'	19.45'	7°09'40"	9°44'22"
2+92.91	17.91'	21.82'	13.95'	5°07'49"	14°52'11"

NOTE: ROLL TYPE CURB & GUTTER TO BE CONSTRUCTED ON THE PAVEMENT SHOWN ON THIS SHEET. TOP OF CURB ELEVATIONS ARE GIVEN FOR FULL HEIGHT CURB.

	SOUTHERN RIDGE 2ND ADD. - PH 1	
	ATLANTA CIR. STA 0+00 TO STA 3+31.64	
<small>Baughman Company, P.A. 315 Ellis St. Wichita, KS 67211 P 316262-7771 F 316262-0149 ENGINEERING SURVEYING PLANNING LANDSCAPE ARCHITECTURE</small>		
PROJECT NUMBER 472-84097	DESIGN AEG	DRAWN TMS
REVISIONS:	APPROVED	DATE 01/05
SCALE Noted		SHEET 8 OF 29
<small>SouthernRidge2nd/Str3</small>		<small>04-08-E046</small>