

MH 5747-633
250 N. Holyoke
Approx depth = 10.6 ft

MH 5747-635
Approx depth = 9.5 ft

MH 5747-637
3501 E. 2nd St.
(under fence)
Approx depth = 12.3 ft

MH 5747-639
245 N. Clifton
Approx depth = 9.2 ft

Install 807 lf of 8" Cured-in-Place Liner
from MH 5747-639 to MH 5747-633

SITE 2

Sheet 6 of 42



Holyoke Ave.

133'

333'

VCP/CIPP

250

237

183'

3401

3501

245

342'

282'

239

2nd St. N.

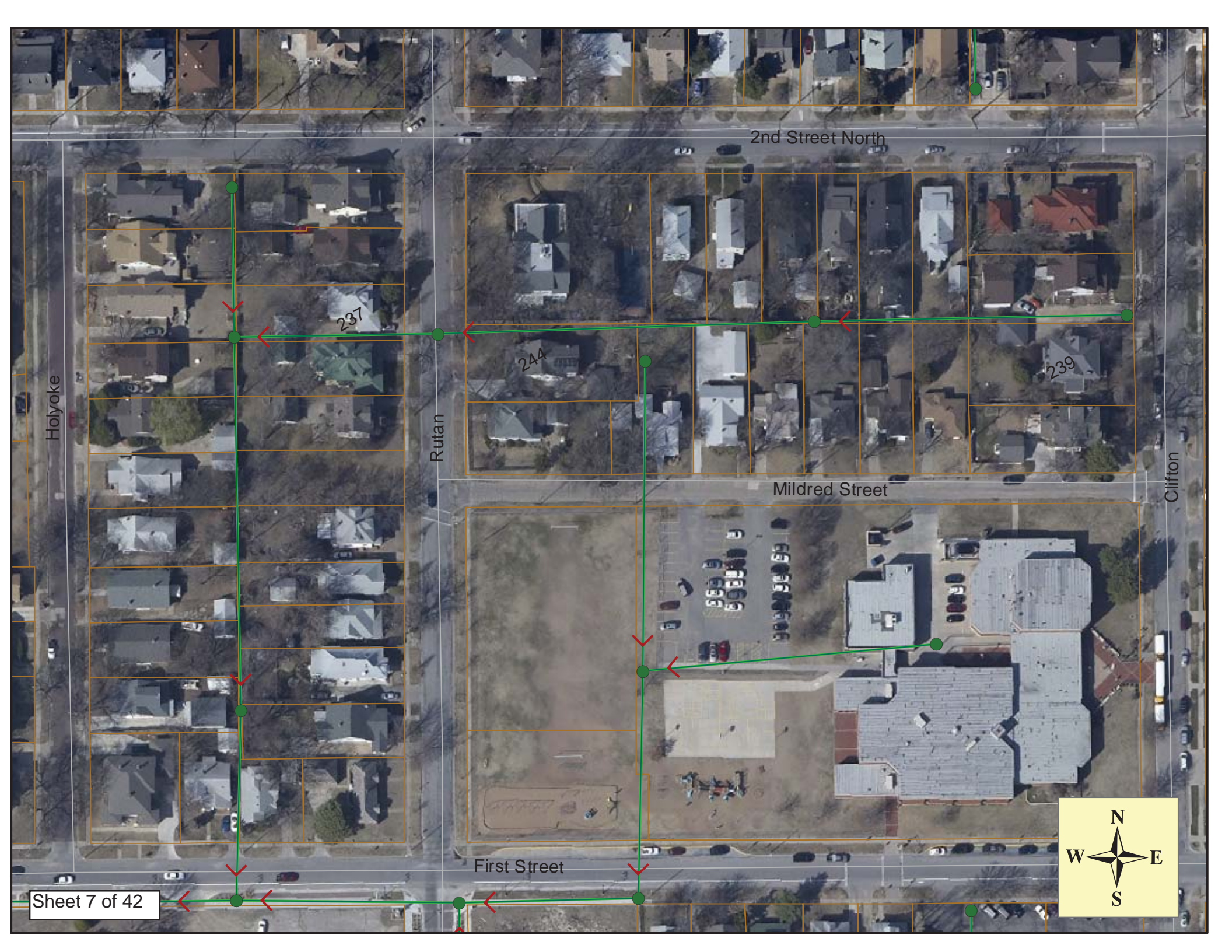
Mildred

Rutan Ave.

School
Playground

School
211 N. Clifton

Clifton Ave.



2nd Street North

Holyoke

Rutan

Clifton

Mildred Street

237

244

239

First Street

Sheet 7 of 42



Video Inspection Master Report

3/5/2012
1:48 PM

US Structure: 5747-639 249 N CLIFTON ST Date Insp: 5/19/2011 Basin: EC02A
 DS Structure: 5747-637 3501 E 1ST ST Dir Televised: Downstream to Upstream

Pipe Information

Project No.: C-113 Dia: 8 Material: VCP Length: 282.4 Slope: 0.032

Obs. #	VTR	Counter	Distance	Location	Description	Rating	Obsrvd (gpm)	Ratings		
								Est. (gpm)	Struct Clean	Remain (gpm)
1			0.0	TV AGAINST THE FLOW	5747-637 DS Manhole	1				
2			6.1		Wye Service	1		(if not addressed, wye is sealed off)		
3			8.6		Wye Service	1	0.000	0	0	0.000
4			25.7	3502 E MILDRED / needs repair	Break-In Conn	3	0.004	2	0	0.004
5			28.3	3505 E 2ND ST N / PVC	Break-In Conn	1	0.001	0	0	0.001
6			49.2		Wye Service	1	0.000	0	0	0.000
7			51.5		Wye Service	1	0.000	0	0	0.000
8			66.6		PVC begins	1	0.000	0	0	0.000
9			74.5	3508 E MILDRED / PVC	Break-In Conn	1	0.001	0	0	0.001
10			76.3	3507 E 2ND ST N / PVC	Break-In Conn	1	0.001	0	0	0.001
			77.0		PVC ends					
11			99.5		Wye Service	1	0.000	0	0	0.000
12			100.4		Internal ClPP sleeve repair begins	1	0.000	0	0	0.000
13			101.5	3509 E 2ND ST N	Break-In Conn	3	0.004	2	0	0.004
14			102.4		Internal ClPP sleeve repair ends	1	0.000	0	0	0.000
15			119.4	3512 E MILDRED	Break-In Conn	3	0.004	2	0	0.004
16			124.8		Wye Service	1	0.000	0	0	0.000
17			127.5	259 N CLIFTON	Wye Service	1	0.000	0	0	0.000
18			135.1		PVC begins	1	0.000	0	0	0.000
19			140.1		PVC ends	1	0.000	0	0	0.000
20			150.0	seal broken / mineral deposits	Wye Service	1	0.000	0	0	0.000
21			152.7		Wye Service	1	0.000	0	0	0.000
22			175.3	seal broken / mineral deposits	Wye Service	1	0.000	0	0	0.000
23			178.1	245 N CLIFTON	Wye Service	1	0.000	0	0	0.000
24			200.1	235 N CLIFTON	Break-In Conn	2	0.002	0	0	0.002
25			203.2		Wye Service	1	0.000	0	0	0.000
26			226.2		Wye Service	1	0.000	0	0	0.000
27			235.1	245 N CLIFTON / PVC	Break-In Conn	1	0.001	0	0	0.001
28			236.3	238 N CLIFTON / needs repair	N Wye Service	3		replace after ClPP / will cause cavity		
29			248.8		Wye Service	1	0.000	0	0	0.000
30			251.4		Wye Service	1	0.000	0	0	0.000
31			271.7		Wye Service	1	0.000	0	0	0.000
32			274.0		Wye Service	1	0.000	0	0	0.000
33			277.0	CAMERA BLOCKED	Infiltration & Corrosion	5		LOTS OF MINERAL DEPOSITS IN THE JOINTS		

First joint west MH 5747-639 is heavily corroded with mineral deposits from infiltration. April 2012: Corrosion bladed down by Sewer Maintenance and an internal sleeve repair was installed to stop infiltration. Should be OK to line.

Video Inspection Master Report

3/5/2012
1:48 PM

US Structure: 5747-637 3501 E 1ST ST Date Insp: 5/19/2011 Basin: EC02A
 DS Structure: 5747-635 244 N RUTAN ST Dir Televised: Downstream To Upstream

Pipe Information
 Shape: Round Length Status: VCP Project No. : C-113
 Dia/Ht: 8 Material: Index:
 Length: 341.0 Slope: 0.400 DVD #0653

Obs. #	VTR Counter	Distance	Location	Description	Rating	Obsrvd (gpm)	Est. (gpm)	Struct	Clean	Remain (gpm)
1		0.0	TV AGAINST THE FLOW	5747-635 DS Manhole	1	0.000	0.000	0	0	0.000
2		15.6		Crack-Horizontal	2	0.002	0.002	2	0	0.002
3		17.5		Crack-Horizontal	2	0.002	0.002	2	0	0.002
4		47.4		Roots	3	0.008	0.008	5	8	0.008
5		95.2	3419 E 2ND ST N	Break-In Conn (Possibly broken down? In crown of pipe. Has loose tile sticking into the main.)	4	0.008	0.008	60	0	0.008
6		116.2	3416 E MILDRED	Break-In Conn	2	0.002	0.002	0	0	0.002
7		147.4		Roots	2	0.004	0.004	2	4	0.004
8		148.2		Observation Hole	3	0.000	0.000	0	0	0.000
9		154.3		Wye Service	1	0.000	0.000	0	0	0.000
10		156.9		Wye Service	1	0.000	0.000	0	0	0.000
11		187.2		Wye Service	1	0.000	0.000	0	0	0.000
12		189.6		Wye Service	1	0.000	0.000	0	0	0.000
13		212.1		seal broken / mineral deposits	2	0.000	0.000	0	0	0.000
14		214.8		seal broken / mineral deposits	1	0.000	0.000	0	0	0.000
15		221.2	3423 E 2ND ST N / roots	Break-In Conn	2	0.002	0.002	0	0	0.002
16		237.8		seal broken / mineral deposits	1	0.000	0.000	0	0	0.000
17		240.3		seal broken / mineral deposits	1	0.000	0.000	0	0	0.000
18		262.6	3428 W MILDRED / PVC	Break-In Conn	1	0.001	0.001	0	0	0.001
19		265.6	3501 E 2ND ST N	Wye Service	1	0.000	0.000	0	0	0.000
20		288.3		Wye Service	1	0.000	0.000	0	0	0.000
21		290.8		Wye Service	1	0.000	0.000	0	0	0.000
22		315.9	3502 E MILDRED	Break-In Conn	1	0.001	0.001	0	0	0.001
23		317.6	3501 E 2ND ST N / ball of roots	Break-In Conn	2	0.002	0.002	0	0	0.002
24		342.0		5747-637 US Manhole	2	0.000	0.000	0	0	0.000

Lots of infiltration and roots within the first 50 feet of the video / not shown on this log.

Video Inspection Master Report

3/5/2012
1:48 PM

US Structure: **5747-635** 244 N RUTAN ST Date Insp: 5/19/2011 Basin: **EC02A**
 DS Structure: **5747-633** 250 N HOLYOKE AVE Dir Televised: Upstream To Downstream

Pipe Information

Shape: Round Length Status: Project No. : C-117
 Dia/Ht: 8 Material: VCP
 Length: 183.2 Slope: 0.009 DVD #0653

Obs. #	VTR	Counter	Distance	Location	Description	Rating	Ratings			
							Obsrvd (gpm)	Est. (gpm)	Struct Clean	Remain (gpm)
1			0.0		5747-635 US Manhole	1	0.000	0	0	0.000
2			0.0		Debris / tile laying in line Mineral deposit at joint / heavy	2	0.000	0	0	0.000
3			30.9		Crack-Horizontal	3	0.004	5	0	0.004
4			40.0		Sewer snake laying in line	4	0.000	0	25	0.000
5			78.5		Debris Roots	2	0.004	2	4	0.004
6			80.9		Roots	2	0.004	2	4	0.004
7			91.1		Observation Hole Broken Pipe	5	0.060	100	0	0.060
Internal CIPP sleeve repair installed by Sewer Maintenance 3-38-12 to bridge through the cavity and allow for future CIPP installation.										
8			108.7		Roots	4	0.010	10	25	0.010
9			111.1		Roots	3	0.008	5	8	0.008
10			114.6	237 N RUTAN	Break-In Conn	4	0.008	60	0	0.008
11			117.9		Wye Service	1	0.000	0	0	0.000
12			118.6		Roots	3	0.008	5	8	0.008
13			121.1		Roots	3	0.008	5	8	0.008
14			180.8		5747-633 DS Manhole	3	0.000	0	0	0.000