

Central Ave

MH 5747-057  
451 N. Terrace  
Approx depth = 16.3 ft

MH 5747-056  
419 N. Terrace  
Estimated depth = 15.5 ft

Install 235 lf of 8"  
Cured-in-Place Liner  
from MH 5747-057  
to MH 5747-056

VCP / CIPP

235'

VCP / CIPP

227'

150'

451

435

440

430

419

Grestway

Terrace

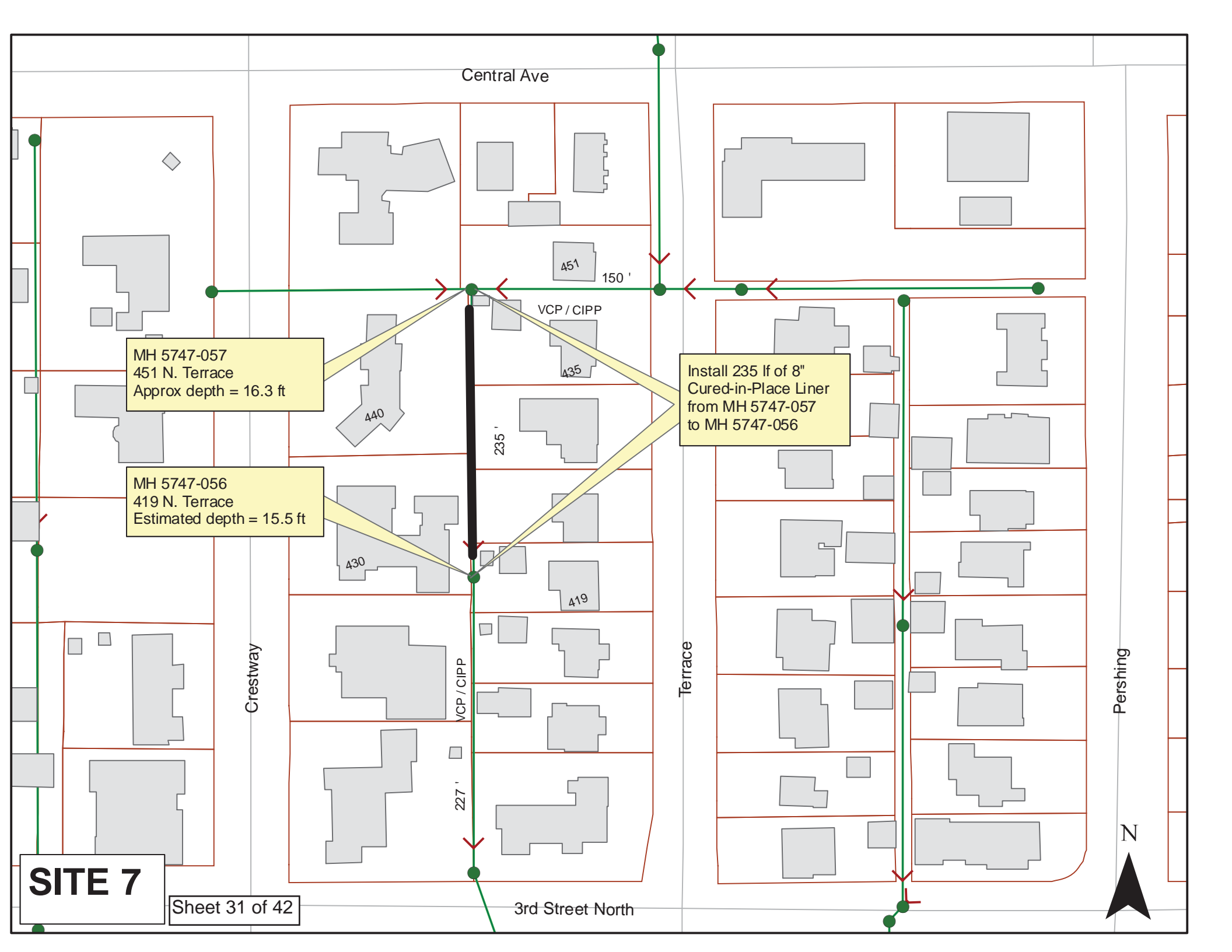
Pershing

**SITE 7**

Sheet 31 of 42

3rd Street North

N



E CENTRAL AVE

N CRESTWAY AVE

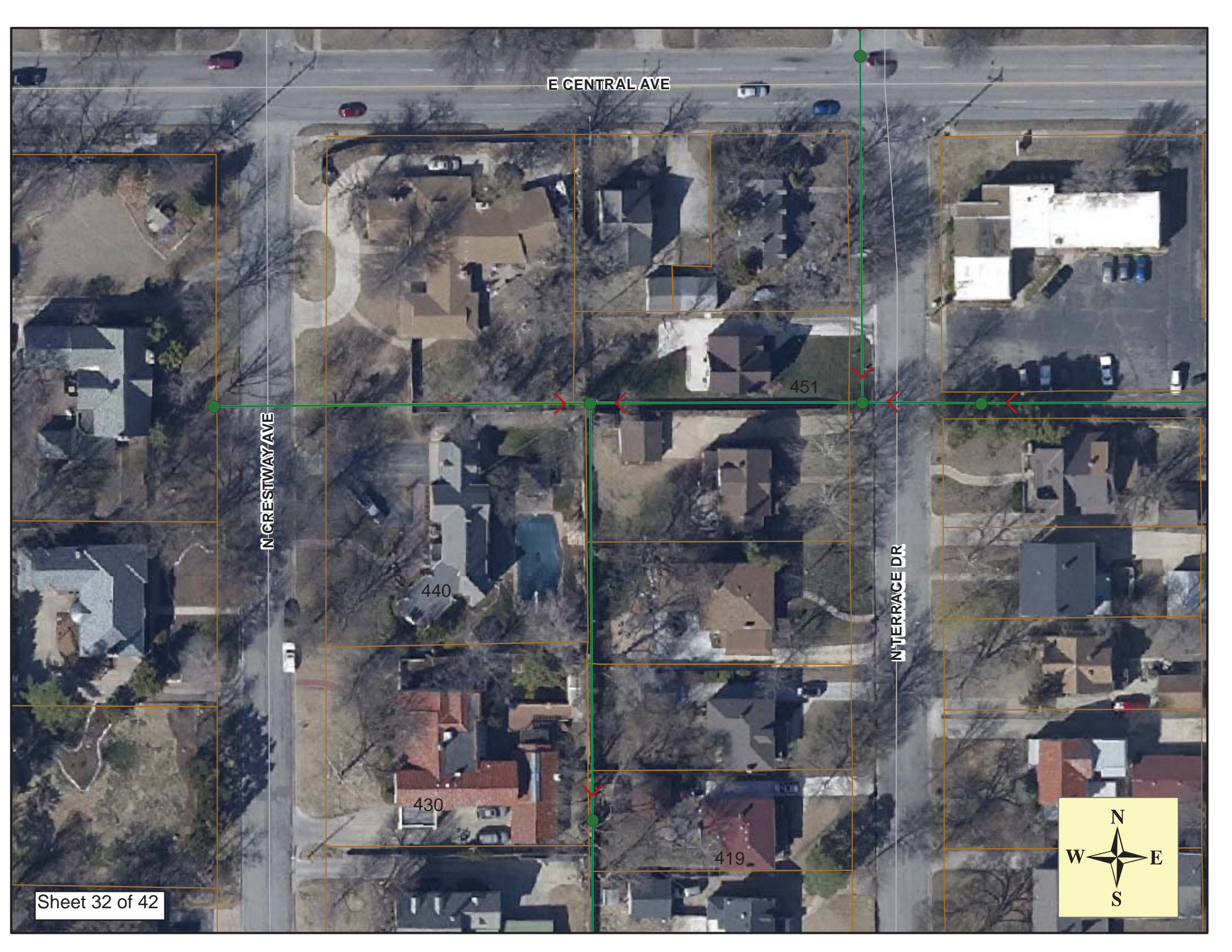
N TERRACE DR

451

440

430

419



US Structure: **5747-057**      451 N TERRACE ST      Date Insp: **3/4/2011**      Basin: **EC01G**  
 DS Structure: **5747-056**      419 N TERRACE      Dir Televised:      Upstream To Downstream

**Pipe Information**  
 Project No. : **C-234**      Dia: **8**      Material: **VCP**      Length: **235.0**      Slope: **0.002**      Surface:      Rear Easement

Obs. #	VTR Counter	Distance	Location	Description	Rating	Ratings				
						Obsrvd (gpm)	Est. (gpm)	Struct	Clean	Remain (gpm)
1		0.0		5747-057 US Manhole	3					
2		0.0	450 N CRESTWAY	Break-In Conn	1		Manhole Tap (PVC)			
		0.00	445 N. CRESTWAY	VCP pipe from the west			Manhole Tap (VCP from across the street)			
3		13.2		Roots	1	0.002		1	1	0.002
4		15.2		Sealed Off Wye	1	0.000		0	0	0.000
5		17.6		Sealed Off Wye	1	0.000		0	0	0.000
6		30.0	435 N TERRACE	Break-In Conn	1	0.001		0	0	0.001
7		34.4		Crack-Radial	3	0.004		5	0	0.004
8		37.2		Crack-Radial	2	0.002		2	0	0.002
9		39.5		Crack-Radial	2	0.002		2	0	0.002
10		41.2		Sealed Off Wye	1	0.000		0	0	0.000
11		43.8		Sealed Off Wye	1	0.000		0	0	0.000
12		49.8		Crack-Radial	3	0.004		5	0	0.004
13		55.9	440 N CRESTWAY	Break-In Conn	1	0.001		0	0	0.001
14		60.7		Crack-Radial	3	0.004		5	0	0.004
15		63.7		Sealed Off Wye	1	0.000		0	0	0.000
16		65.3		Crack-Radial	2	0.002		2	0	0.002
17		66.1		Sealed Off Wye	1	0.000		0	0	0.000
18		68.0		Crack-Radial	2	0.002		2	0	0.002
19		76.2	433 N TERRACE (1 of 2?)	Extended Tap	2	0.002		0	0	0.002
20		86.0		Crack-Radial	3	0.004		5	0	0.004
21		87.7		Sealed Off Wye	1	0.000		0	0	0.000
22		90.4		Sealed Off Wye	1	0.000		0	0	0.000
23		97.9	433 N TERRACE / PVC (2 of 2?)	Break-In Conn	1	0.001		0	0	0.001
24		108.6		Sealed Off Wye	1	0.000		0	0	0.000
25		111.4		Sealed Off Wye	1	0.000		0	0	0.000
26		114.7		Crack-Radial	3	0.004		5	0	0.004
27		134.5		Sealed Off Wye	1	0.000		0	0	0.000
28		135.4		Crack-Radial	3	0.004		5	0	0.004
29		136.9		Sealed Off Wye	1	0.000		0	0	0.000
30		154.1		Crack-Radial	3	0.004		5	0	0.004

US Structure: 5747-057  
DS Structure: 5747-056

451 N TERRACE ST  
419 N TERRACE

Date Insp: 3/4/2011  
Dir Televised: Upstream To Downstream

Basin: EC01 G

31	152.6	Sag begins	1	0.000	1	0	0.000
32	154.2	Sag / camera submerged	3	0.000	5	0	0.000
33	163.1	Sag / camera emerged	1	0.000	1	0	0.000
34	163.1	Sag ends	1	0.000	1	0	0.000
35	162.9	Sealed Off Wye	1	0.000	0	0	0.000
36	160.7	Sealed Off Wye	1	0.000	0	0	0.000
37	160.7	Crack-Radial	3	0.004	5	0	0.004
38	165.1	430 N CRESTWAY (1 of 2?) Break-In Conn	5	0.010	400	0	0.010

Pipe gone all around the tap with a cavity / tap looks like corroded CIP

There is a stucco wall constructed over (or near) the sewer main, so excavation for a joint repair was not done. This could be a tricky spot for CIPP installation. Contractor needs to assess the situation and advise if this cannot be lined. There is water coming from the tap, but it's possible that it could be ground water. There is a second tap facing this property at 191.9 ft.

39	184.9	Sealed Off Wye	1	0.000	0	0	0.000
40	186.7	423 N TERRACE Break-In Conn / roots	5	0.010	400	0	0.010
The active tap has another sealed off pipe right next to it, with a small cavity outside of the main.							
The active tap has very rough & jagged VCP pipe. Not a good place for excavation.							
41	188.7	Sealed Off Wye	1	0.000	0	0	0.000
42	191.9	430 N CRESTWAY (2 of 2?) Break-In Conn	4	0.010	400	0	0.010
roots around the perimeter of the tap							
43	208.2	Roots	2	0.004	2	4	0.004
44	212.2	Sealed Off Wye	1	0.000	0	0	0.000
45	212.9	Roots	2	0.004	2	4	0.004
46	214.9	Sealed Off Wye	2	0.000	0	0	0.000
47	223.1	Roots	2	0.004	2	4	0.004
48	235.6	DS Manhole 5747-056	1			Manhole is good	

There are more roots at the joints than what is reflected on this log.  
Also some infiltration evidence at cracks & joints.