

MH 5747-055  
4422 E. 3rd St. N.  
Approx depth = 14.8 ft

MH 5747-054  
360 N. Crestway  
Approx depth = 13.7 ft

MH 5747-053  
334 N. Crestway  
(edge of sidewalk at the top of the stairs)  
Approx depth = 15.0 ft

MH 5747-052 was abandoned by a CIPP sleeve.

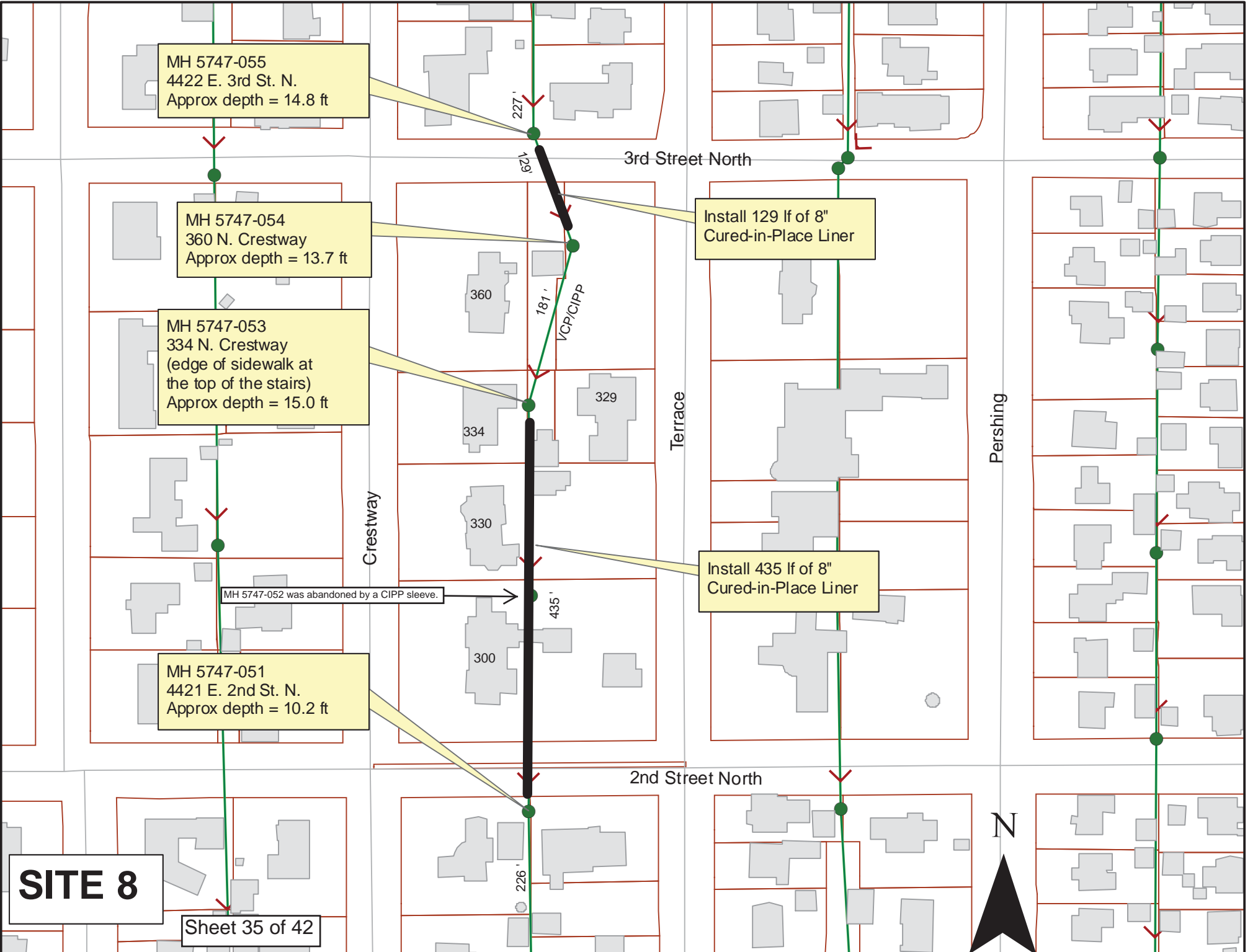
MH 5747-051  
4421 E. 2nd St. N.  
Approx depth = 10.2 ft

Install 129 lf of 8" Cured-in-Place Liner

Install 435 lf of 8" Cured-in-Place Liner

**SITE 8**

Sheet 35 of 42



N BELMONT AVE

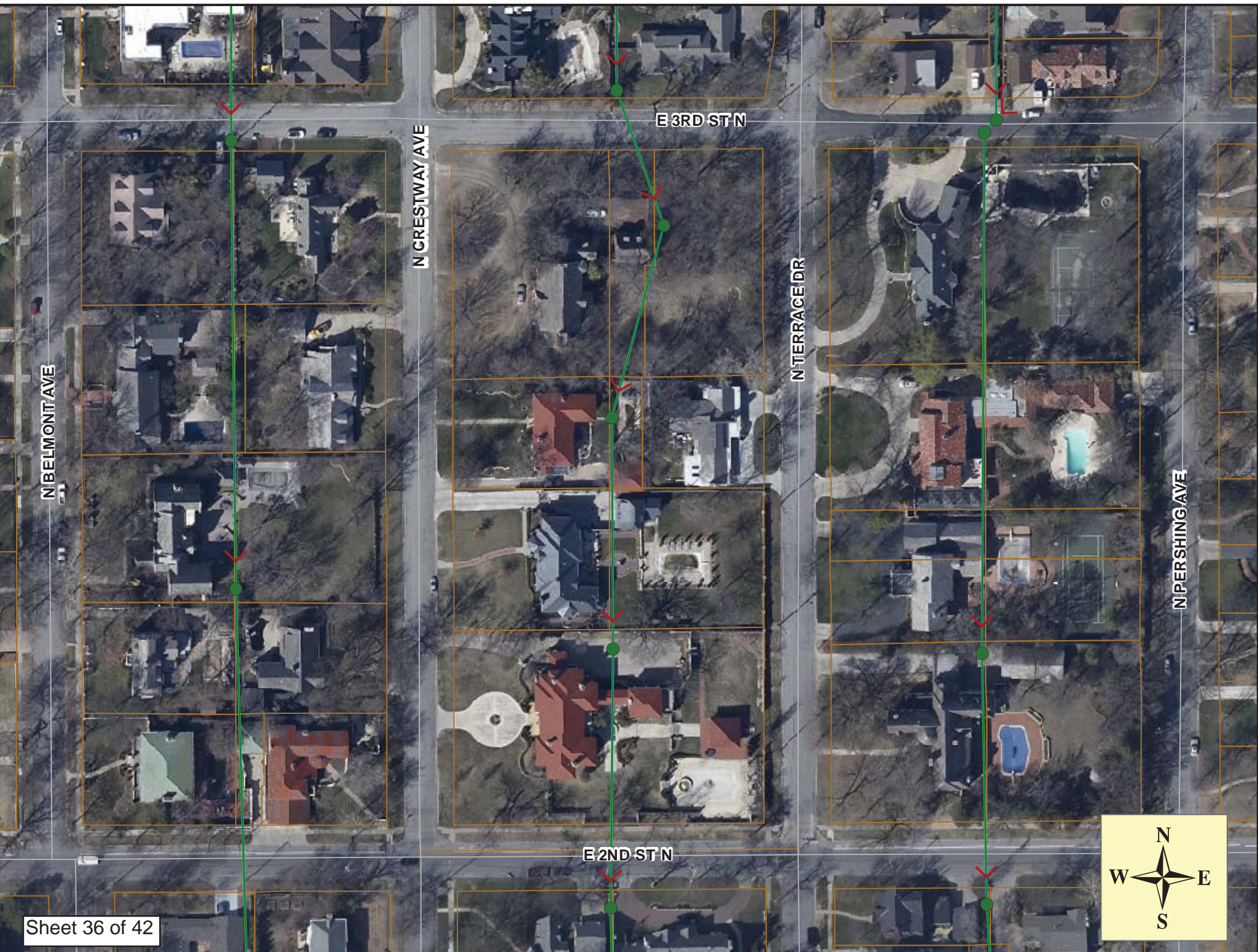
N CRESTWAY AVE

N TERRACE DR

N PERSHING AVE

E 3RD ST N

E 2ND ST N





# Television Inspection Master Report

8/31/2011  
3:17 PM

US Structure: 5747-055  
DS Structure: 5747-054

4422 E 3RD ST  
360 N CRESTWAY AVE

Date Insp: 3/3/2011  
Dir Televised: Upstream To Downstream

Basin: EC01G

### Pipe Information

Shape: Round  
Dia/Ht: 8  
Length: 129.5

Length Status: VCP  
Material: VCP  
Slope: 0.400

Project No.: C-234  
Index:  
Surface:

Obs. #	VTR	Counter	Distance	Location	Description	Rating	Ratings					
							Obsrvd (gpm)	Est. (gpm)	Struct Clean	Remain (gpm)		
1			0.0		5747-055 US Manhole		4422 E 3RD ST N					
2			11.3		Crack-Radial	2	0.002	2	0	0.002		
3			42.0		Crack-Radial	2	0.002	2	0	0.002		
4			49.7		Crack-Horizontal	3	0.004	5	0	0.004		
5			62.6		Crack-Radial	2	0.002	2	0	0.002		
6			65.5		Crack-Radial	3	0.004	5	0	0.004		
7			72.1		Sealed Off Wye	1	0.000	0	0	0.000		
8			73.8		Sealed Off Wye	1	0.000	0	0	0.000		
9			89.2		Crack-Radial	1	0.001	1	0	0.001		
10			97.9		Sealed Off Wye	1	0.000	0	0	0.000		
11			100.6		Sealed Off Wye	2	0.000	0	0	0.000		
12			125.4	Joint	Broken Pipe	4	0.030	78	0	0.030		
13			127.6		5747-054 DS Manhole		360 N CRESTWAY					

Line has some short and shallow sags.  
Sag from 92' to 125' - line through this anyway

## Video Inspection Master Report

8/3/2012  
2:12 PM

US Structure: 5747-053      334 N CRESTWAY ST      Date Insp: 6/12/2012      Basin: EC01G  
 DS Structure: 5747-052      300 N CRESTWAY AVE      Dir Televised: Upstream To Downstream

### Pipe Information

Project No : C-234      Dia: 8      Material: VCP      Length: 205.7      Slope: 0.001

Obs. #	VTR Counter	Distance	Location	Description	Rating	Ratings		
						Obsrvd (gpm)	Est. (gpm)	Remain (gpm)
1		0.0		5747-053 US Manhole (located at south side of the sidewalk, in the elevated part of the yard)	1			
2		0.00		An internal CIPP sleeve repair has been installed at the beginning of the pipe				
		1.5		Sag	1			
3		9.7	329 N TERRACE	Break-In Conn	1			
4		16.7		Sealed Off Wye	1			
5		19.3		Sealed Off Wye	1			
6		25.5		Crack-Horizontal / mineral deposit	4			
7		28.0		Crack-Horizontal	3			
8		31.0		Crack-Horizontal	5			
9		33.5		Crack-Horizontal	4			
10		45.8		Sealed Off Wye	1			
11		47.4		Sealed Off Wye	4			
12		48.5	334 N CRESTWAY	Extended Tap / jagged VCP	5			
13		68.5		Sealed Off Wye	2			
14		69.6		Sealed Off Wye	3			
15		87.1	330 N CRESTWAY	Break-In Conn	5			
			Tap is in poor condition. OK to install CIPP. (2 taps for this address?)					
16		94.2		Sealed Off Wye	1			
17		96.9		Sealed Off Wye	1			
18		97.9		Crack-Radial	3			
19		119.6		Sealed Off Wye	1			
20		122.1		Sealed Off Wye	1			
21		145.0		Sealed Off Wye	1			
22		147.0		Sealed Off Wye	1			
23		154.6	330 N CRESTWAY / PVC	Break-In Conn	1			
24		155.6		Crack-Radial	3			
25		165.8		Crack-Radial	2			
26		170.0		Sealed Off Wye	1			
27		172.4		Sealed Off Wye	1			
28		195.3		Sealed Off Wye	1			
29		198.0		Sealed Off Wye	1			
30		198.9		Broken Pipe	5			
31		202.0	300 N CRESTWAY	DS Manhole	1			

5747-052

Manhole is buried in concrete driveway.  
An internal CIPP sleeve was installed inside the manhole to abandon it.

US Structure: **5747-052**      300 N CRESTWAY AVE      Date Insp: 3/3/2011      Basin: **EC01 G**  
 DS Structure: **5747-051**      4421 E 2ND ST      Dir Televised: Downstream To Upstream

**Pipe Information**

Shape: Round      Length Status: VCP      Project No. : C-234  
 Dia/Ht: 8      Material: VCP      Index:  
 Length: 232.8      Slope: 0.400      Surface:

Obs. #	VTR	Counter	Distance	Location	Description	Rating	Ratings			
							Obsrvd (gpm)	Est. (gpm)	Struct Clean	Remain (gpm)
1			0.0	Begin PVC	5747-051 DS Manhole	1	0.000	0	0	0.000
2			92.3	300 N CRESTWAY	Break-In Conn	1	0.001	0	0	0.001
3			127.0	(downstream 127' is PVC)	Mat. Chngs to VCP	1	0.000	0	0	0.000
4			131.9		Sealed Off Wye	1	0.000	0	0	0.000
5			135.5		Sealed Off Wye	1	0.000	0	0	0.000
6			157.6		Sealed Off Wye	1	0.000	0	0	0.000
7			160.7		Wye Service	1	0.000	0	0	0.000
8			184.1		Sealed Off Wye	1	0.000	0	0	0.000
9			186.4		Sealed Off Wye	1	0.000	0	0	0.000
10			189.6		Crack-Horizontal	1	0.001	1	0	0.001
11			191.6	300 N CRESTWAY	Break-In Conn	1	0.001	0	0	0.001
12			210.2		Sealed Off Wye	1	0.000	0	0	0.000
13			212.5		Sealed Off Wye	1	0.000	0	0	0.000
14			220.8		Broken Pipe	3	0.010	60	0	0.010
15			232.8		5747-052 US Manhole	1	0.000	0	0	0.000

Manhole is buried in concrete driveway.  
 An internal ClPP sleeve was installed  
 inside the manhole to abandon it.