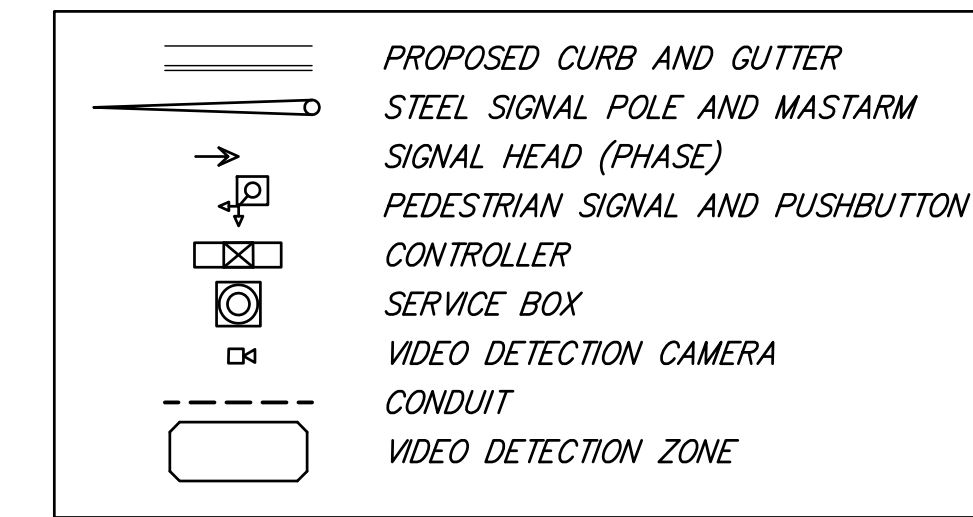


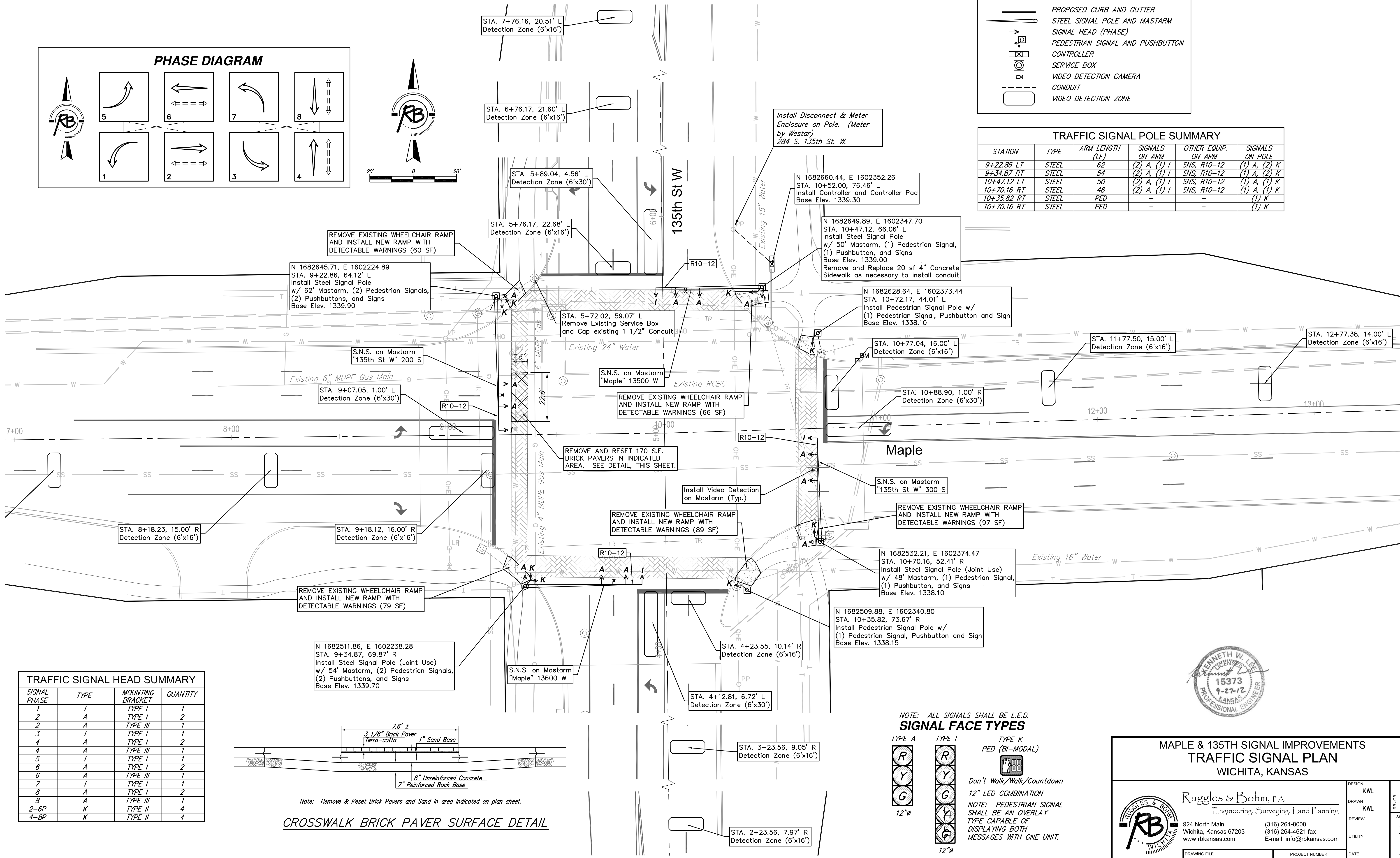
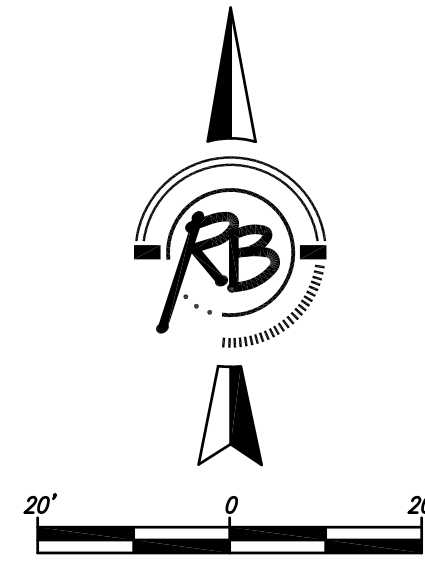
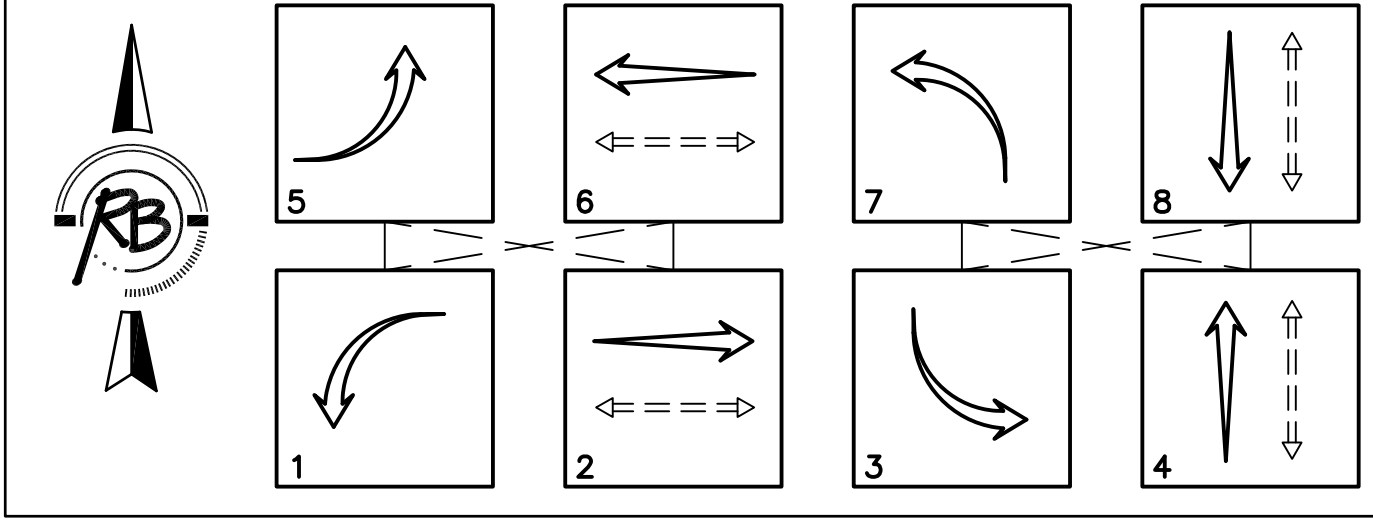
LEGEND



TRAFFIC SIGNAL POLE SUMMARY

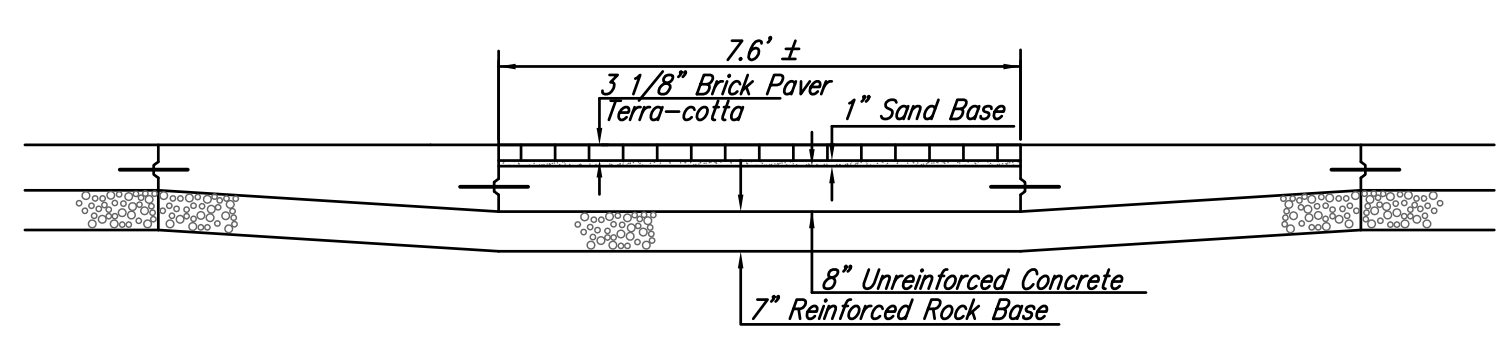
STATION	TYPE	ARM LENGTH (LF)	SIGNALS ON ARM	OTHER EQUIP. ON ARM	SIGNALS ON POLE
9+22.86 LT	STEEL	62	(2) A, (1) I	SNS, R10-12	(1) A, (2) K
9+34.87 RT	STEEL	54	(2) A, (1) I	SNS, R10-12	(1) A, (2) K
10+47.12 LT	STEEL	50	(2) A, (1) I	SNS, R10-12	(1) A, (1) K
10+70.16 RT	STEEL	48	(2) A, (1) I	SNS, R10-12	(1) A, (1) K
10+35.82 RT	STEEL	PED	-	-	(1) K
10+70.16 RT	STEEL	PED	-	-	(1) K

PHASE DIAGRAM



TRAFFIC SIGNAL HEAD SUMMARY

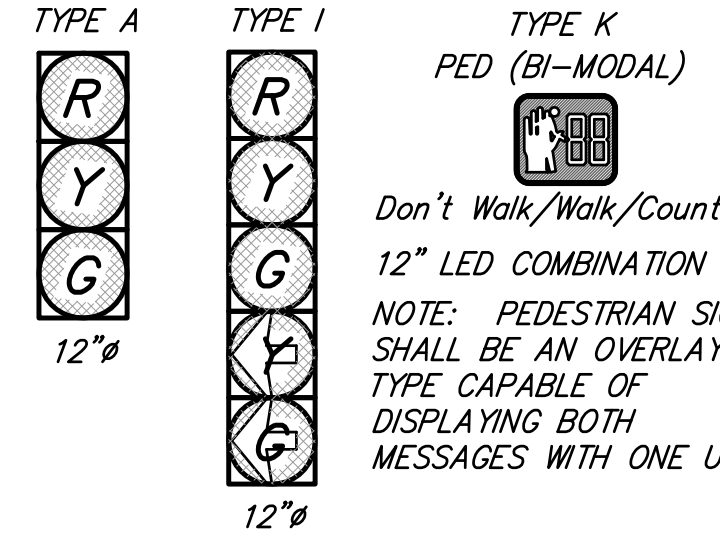
SIGNAL PHASE	TYPE	MOUNTING BRACKET	QUANTITY
1	I	TYPE I	1
2	A	TYPE I	2
2	A	TYPE III	1
3	I	TYPE I	1
4	A	TYPE I	2
4	A	TYPE III	1
5	I	TYPE I	1
6	A	TYPE I	2
6	A	TYPE III	1
7	I	TYPE I	1
8	A	TYPE I	2
8	A	TYPE III	1
2-6P	K	TYPE II	4
4-8P	K	TYPE II	4



Note: Remove & Reset Brick Pavers and Sand in area indicated on plan sheet.

CROSSWALK BRICK PAVER SURFACE DETAIL

NOTE: ALL SIGNALS SHALL BE L.E.D.
SIGNAL FACE TYPES



Don't Walk/Walk/Countdown
12" LED COMBINATION
NOTE: PEDESTRIAN SIGNAL SHALL BE AN OVERLAY TYPE CAPABLE OF DISPLAYING BOTH MESSAGES WITH ONE UNIT.



**MAPLE & 135TH SIGNAL IMPROVEMENTS
TRAFFIC SIGNAL PLAN
WICHITA, KANSAS**

Ruggles & Bohm, P.A.
Engineering, Surveying, Land Planning

924 North Main
Wichita, Kansas 67203
www.rbkansas.com

(316) 264-8008
(316) 264-4621 fax
E-mail: info@rbkansas.com

DESIGN	KWL	SHEET 2 OF 7		
DRAWN	KWL			
REVIEW				
UTILITY				
DRAWING FILE	traffic signal plans [Signal Plan]	PROJECT NUMBER	DATE	Sept. 27, 2012