

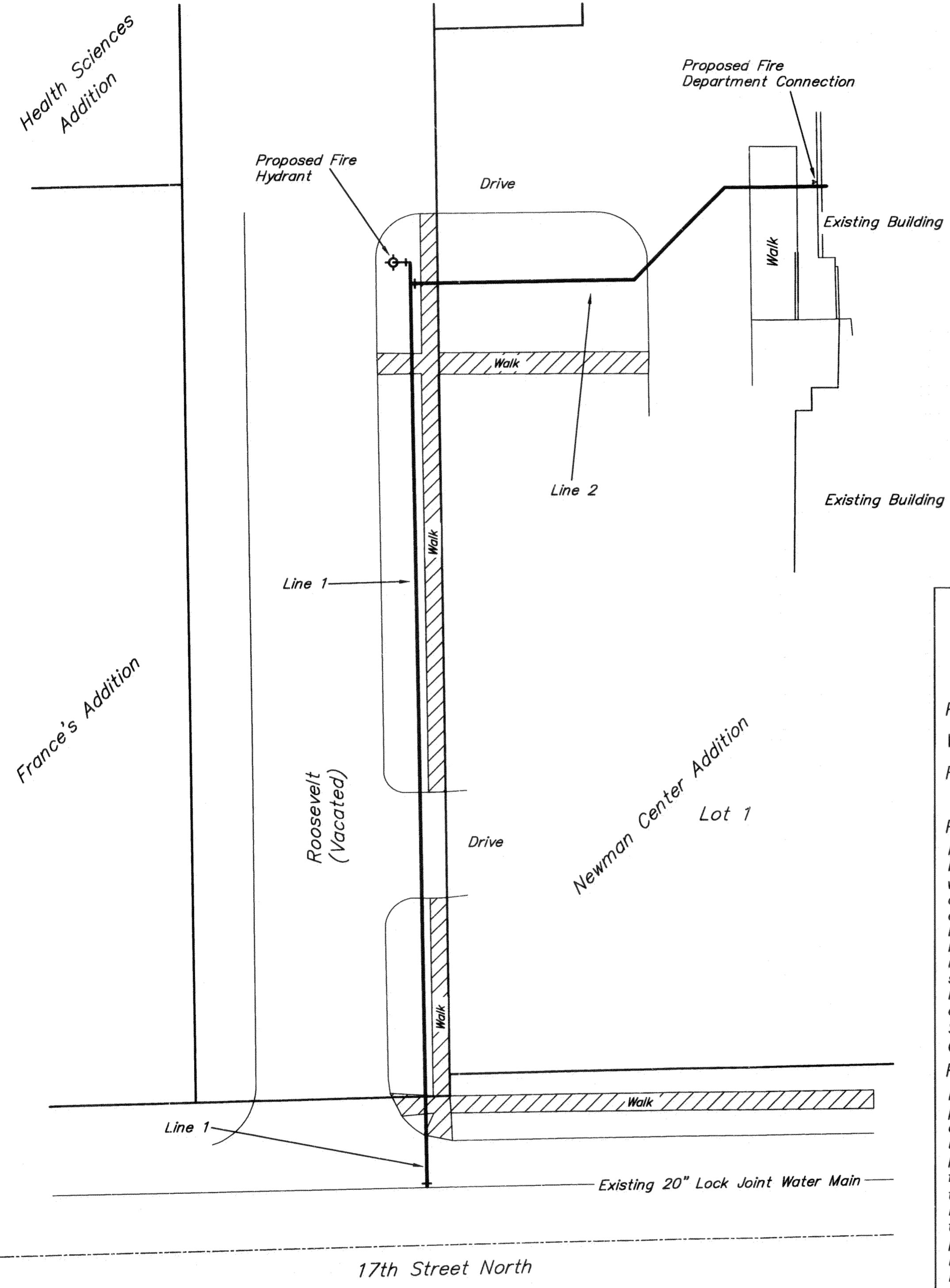
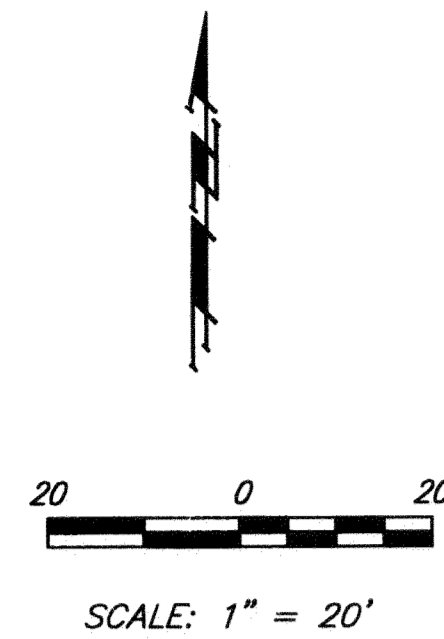
FIRE LINE & FIRE HYDRANT TO SERVE Newman Center Addition

Lot 1

Private Project: 1678 PPW (607853)

CITY OF WICHITA, KANSAS
Gary Janzen, P.E. Interim City Engineer

August 2012



Benchmark

"□" Chiseled At Back Of Walk.
Southwest Corner Intersection
17th North & Roosevelt.
Elev. = 1391.57 (NAVD 88)

US PIPE FIRE HYDRANT

Index

Title Sheet	1
Water Detail Sheet	2
Plan/Profile Sheet	3
Copy of Plat	4
BMP Erosion Details	Available On Request

Legal Description

Lot 1, Newman Center Addition To
Wichita, Kansas

General Notes

1. Contractor will be required to provide notice to utility companies a minimum of forty-eight (48) hours prior to any excavation, as follows:

Kansas One-Call	687-2470
Cox Communications	262-4270
Kansas Gas Service Company	1-888-482-4950
Westar Energy (Electric)	383-8650
Black Hills Energy (Gas)	1-800-303-0357
A&T	268-2245
City of Wichita Water Dept. (Water)	268-4563
City of Wichita Sewer Maint. (SS)	268-4024
City of Wichita Storm Sewer Maint.	268-4090
City of Wichita Traffic Maint.	268-4034

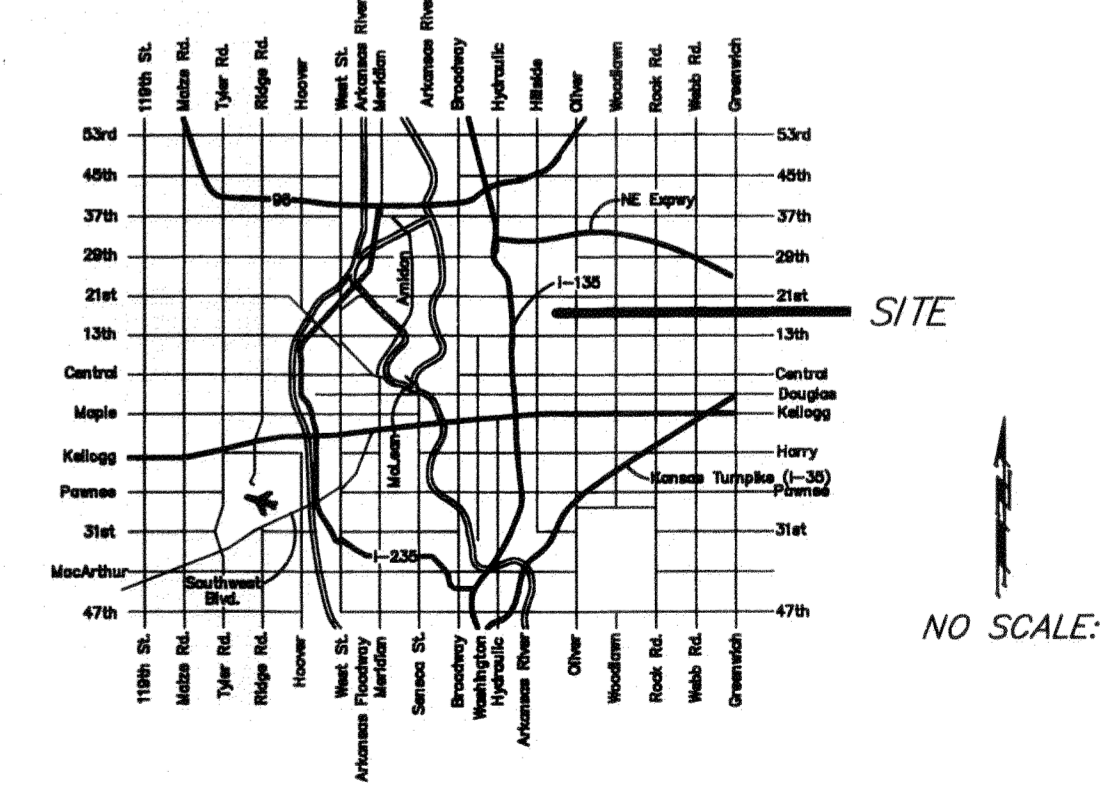
The Contractor must notify the following in case of an emergency:
2. All disturbed R/W areas not intended for pavement or sidewalk construction shall be seeded with Kansas Premium Fescue Blend at a rate of 8 lb./1000 Sq. Ft., fertilized with a 16-20-6 ratio at a rate of 4 lb./1000 Sq. Ft., and mulched with Prairie Hay at a rate of 92 lb./1000 Sq. Ft. Mulch shall be "patted" with forks or punched into soil to reduce loss due to wind.
3. Utility service lines, poles, valve boxes, meters, et cetera are to be adjusted as necessary by others prior to construction unless the plans specifically call for their adjustment by the Contractor or unless the plans specifically identify a utility to be adjusted by its owner during construction. Existing utilities and their location, as shown on the plans represent the best information obtainable for design and shall be field verified. The contractor will be required to work around existing utilities within the right-of-way which do not conflict with proposed construction.
4. Contractor shall furnish the inspector with a copy of the manufacturer's certification for any pipe used on this project after completion of pipe installation. The engineer will not certify the project to the city until pipe certification has been received.
5. Cuts made to paved surfaces on public property will be repaired by the City's contractor and charged against the owner/applicant. Unit repair prices are available from the City at 268-4418. A surcharge may be applicable; call 268-4418 for details. Repair costs to be paid prior to release of sewer service if sewer service is affected. Contractor shall obtain permit prior to construction.
6. Contractor to only close portions of 17th North necessary for water line construction. 17th North & Roosevelt shall remain open to traffic. Barriers and detour signage shall be in accordance with the Manual On Uniform Traffic Control Devices.
7. Contractor shall not start work on the project until the project inspector is assigned to the project and is present on the site. Contractor shall not start on the project until all necessary bonds and permits have been obtained. Bonds may include but are not limited to Statutory, Performance & Maintenance. Any work done without inspection will be required to be uncovered for inspection.
8. Rubble from the removal of miscellaneous structures and excess excavation which is to be wasted shall be disposed of on sites to be provided by the Contractor. These sites shall be approved by the Engineer as to suitability, appearance and site location. Locations that, in the opinion of the Engineer, will leave an unsightly appearance will not be approved. All disposal sites must be approved by the Kansas Department of Health and Environment. Material either stockpiled or disposed of in a flood plain would require a Kansas State Board of Agriculture permit. Any material dumped in waters of the United States or wetlands is subject to U.S. Corps. of Engineers permitting regulations. Any material buried or stockpiled beyond approved construction limits would require additional archaeological investigations unless buried in a previously approved borrow location.
9. All water lines and appurtenances shall be installed in accordance with the most recent edition of City of Wichita, Kansas Standard Specifications for the Construction of City Projects.

APPROVED AS NOTED
BY CITY ENGINEER OF WICHITA,
& BY WICHITA WATER & SEWER DEPARTMENT,
& BY WICHITA FIRE DEPARTMENT

Public Works *[Signature]* 8-24-12
 Water & Sewer *[Signature]* 8-24-12
 Fire *[Signature]* 8-24-12

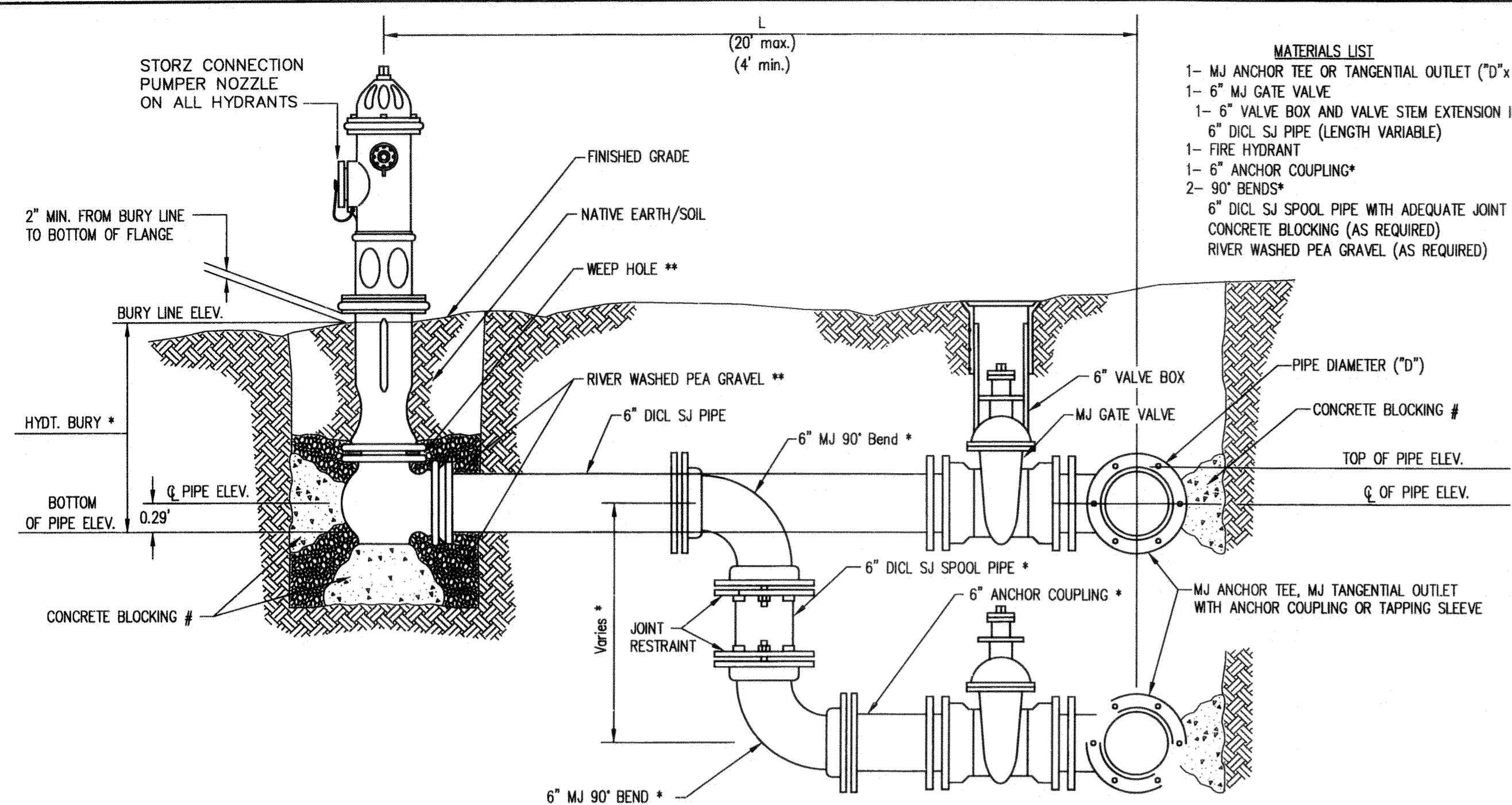
NOTE TO CONTRACTORS
Public Property:
Inspection and testing for the waterline is to be provided by a Licensed Consulting Engineering Firm under contract with the Owner/Developer. Said inspection to be in accordance with the City of Wichita standard construction engineering practices and certified by a Professional Engineer Licensed in the state of Kansas. No work shall be performed in dedicated easements or public right-of-way by the Contractor without such inspection nor shall any work be commenced without written authorization by the City Engineer. All Construction and Materials shall comply with the City or Wichita Specifications and Standards (on file and available in the City Engineer's Office).

Private Property:
Installation and testing for the fire protection line is to be performed by a City of Wichita licensed fire protection contractor in accordance with the fire codes as adopted by the City of Wichita. All material and construction practices for the fire protection line shall comply with the fire codes as adopted by the City of Wichita (available from the City of Wichita Fire Department). The Contractor shall not commence work without notification and approval of the Wichita Fire Department. Inspection of the fire protection line is to be provided by a licensed Engineering Firm under contract with the Owner/Developer and the Fire Department. The contractor shall not start work until the project inspector is assigned to the project and present on the site. Any work done without inspection will be required to be uncovered for inspection.



As-Built Plans
Contractor: Mies Construction, Inc.
Inspector: Eric Strecker, Schwab-Eaton, P.A.
PDF: ELS 10/15/12

Baughman Company, P.A. 315 Ellis St. Wichita, KS 67211 P 316-262-7271 F 316-262-0149
ENGINEERING | SURVEYING | PLANNING | LANDSCAPE ARCHITECTURE



- MATERIALS LIST**
- 1- MJ ANCHOR TEE OR TANGENTIAL OUTLET ("D" x 6")
 - 1- 6" MJ GATE VALVE
 - 1- 6" VALVE BOX AND VALVE STEM EXTENSION IF REQUIRED *
 - 6" DICL SJ PIPE (LENGTH VARIABLE)
 - 1- FIRE HYDRANT
 - 1- 6" ANCHOR COUPLING*
 - 2- 90° BENDS*
 - 6" DICL SJ SPOOL PIPE WITH ADEQUATE JOINT RESTRAINT *
 - CONCRETE BLOCKING (AS REQUIRED)
 - RIVER WASHED PEA GRAVEL (AS REQUIRED)

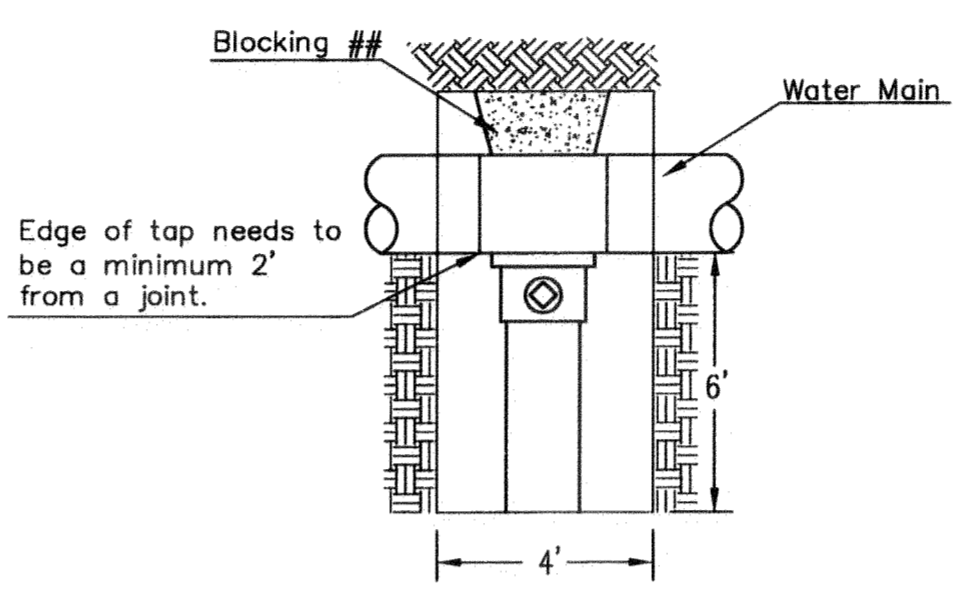
FIRE HYDRANTS REQUIRED				
STATION	BURY LINE ELEVATION	TOP OF PIPE ELEVATION	FIRE HYDRANT BURY REQUIRED*	VALVE STEM EXT. REQUIRED (ft)*
Line 1, Sta. 2+17.34	1394.30	1390.50	4.5'	None

* IF THE REQUIRED HYDRANT BURY IS IN EXCESS OF 5', BUT LESS THAN 7', CONTRACTOR SHALL USE STANDARD 5' HYDRANT BURY AND HYDRANT BARREL EXTENSIONS AS NECESSARY. IF THE REQUIRED HYDRANT BURY IS GREATER THAN 7', CONTRACTOR SHALL USE 5' HYDRANT BURY, 2-MJ 90° BENDS, 6" ANCHOR COUPLING AND 6" DICL SPOOL PIPE AS NECESSARY FOR VERTICAL ADJUSTMENT. THE CONTRACTOR SHALL PROVIDE ADEQUATE THRUST BLOCKING AT HYDRANT AND MEGALUGS, ROD AND LUG OR SIMILAR RESTRAINT BETWEEN 90° BENDS TO SECURE ALL FITTINGS DURING TESTING AND OPERATION. THE CONTRACTOR SHALL PROVIDE A VALVE STEM EXTENSION PER DETAIL THIS SHEET.

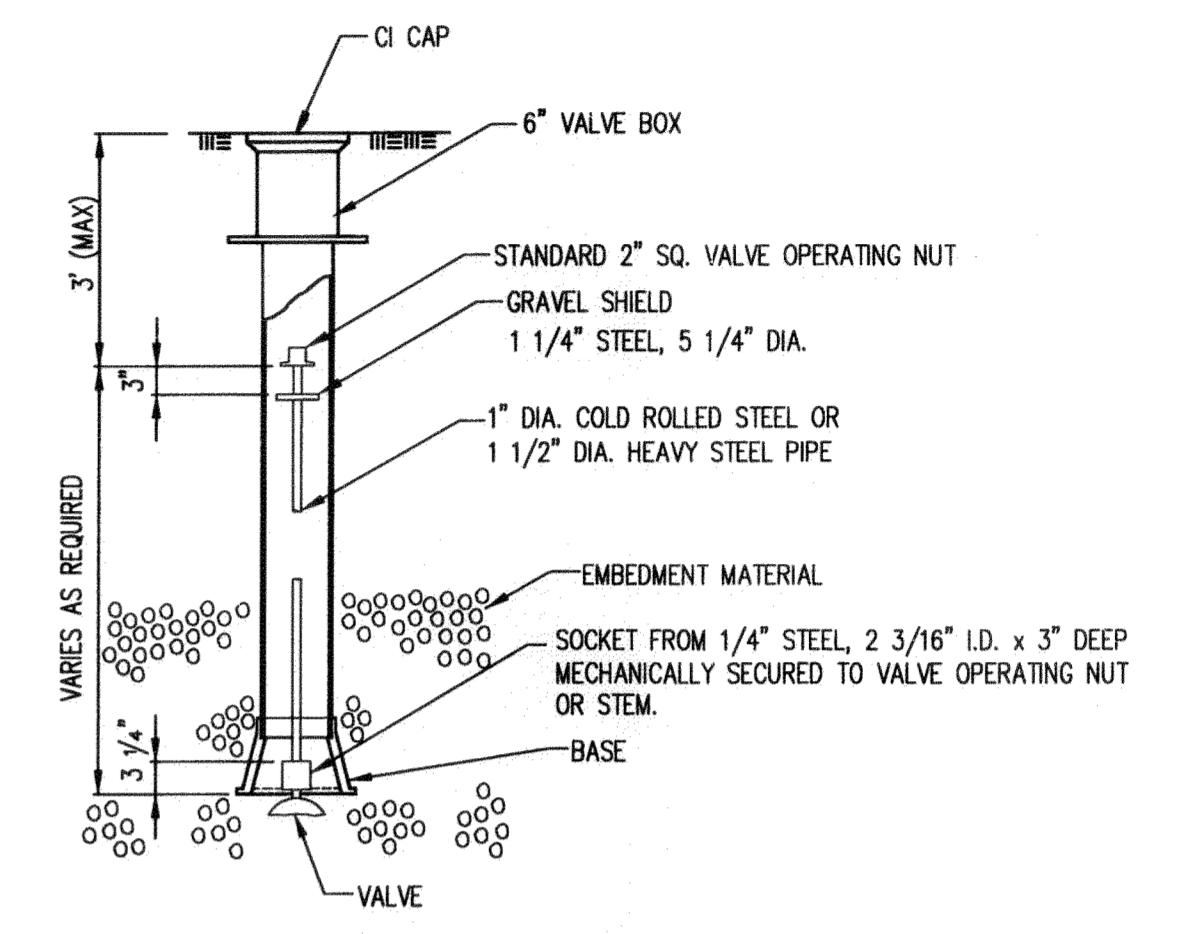
** CAUTION WEEP HOLES TO BE KEPT CLEAR DURING CONSTRUCTION AND BACKFILL. CONCRETE FOR THRUST BLOCKING SHALL NOT OBSTRUCT WEEP HOLES. PLACE 1 CUBIC FOOT OF RIVER WASHED PEA GRAVEL AROUND EACH WEEP HOLE.

CONCRETE THRUST BLOCKING SHALL BE KEPT CLEAR OF BOLTS, NUTS, AND MJ ACCESSORIES.

FIRE HYDRANT ASSEMBLY
PER CITY OF WICHITA SPECIFICATIONS

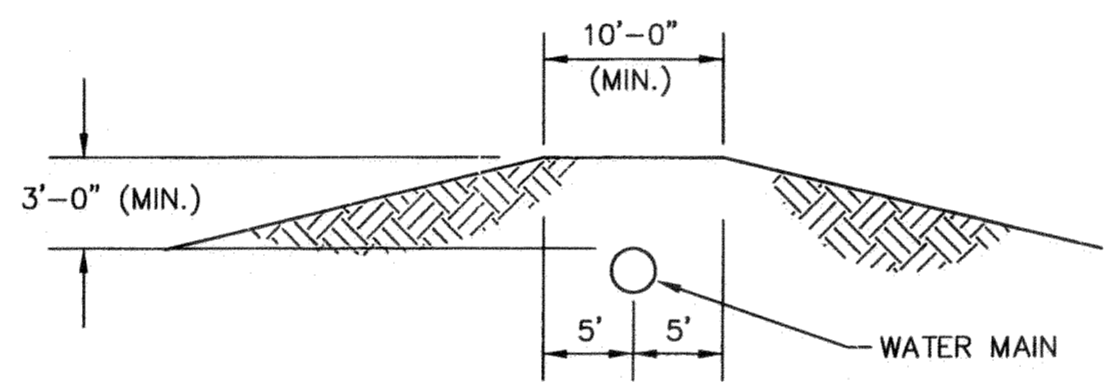


When the City of Wichita makes tap, blocking is to be done by Contractor



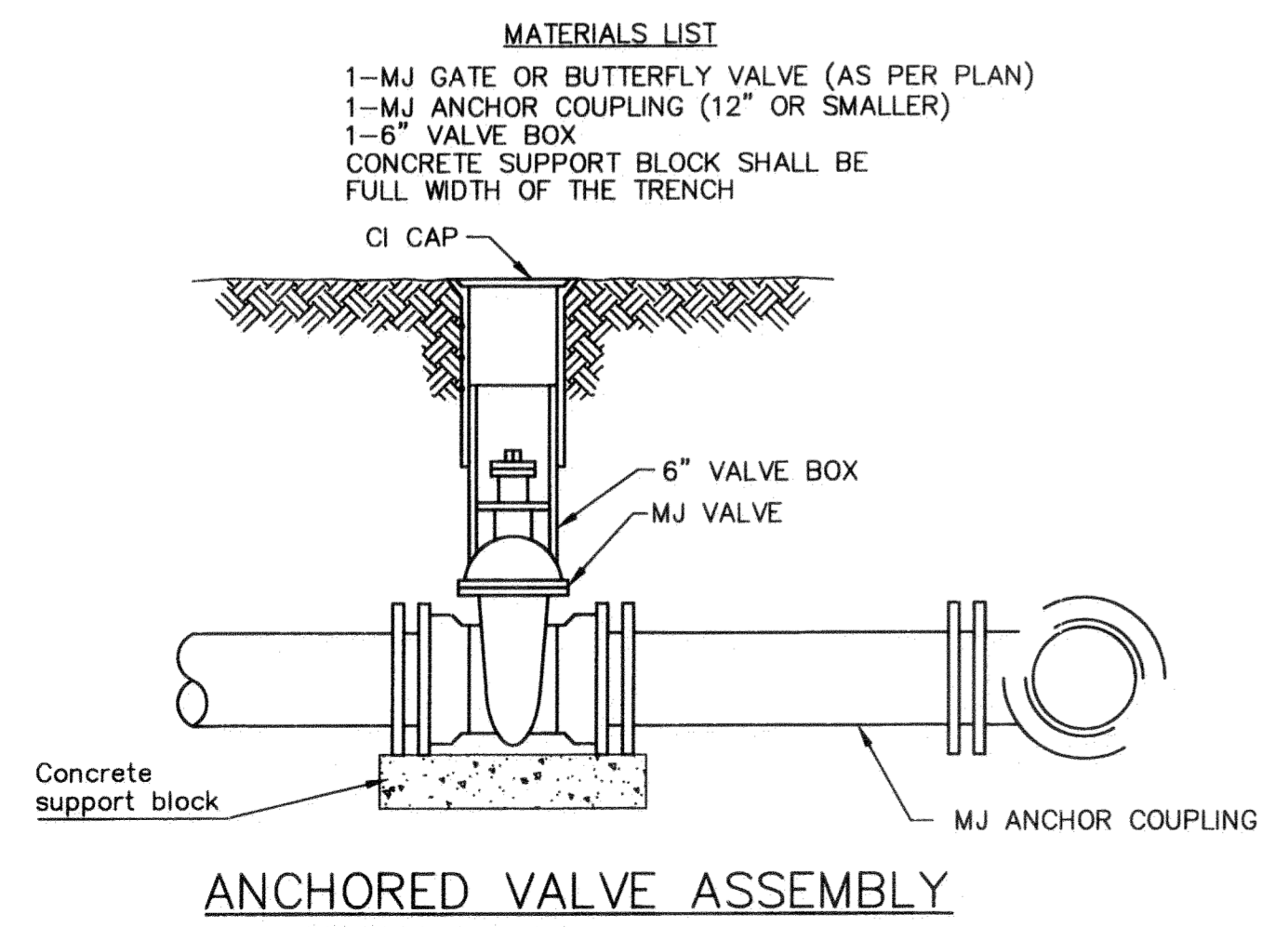
VALVE STEM EXTENSION DETAIL

NOTE: ONE VALVE STEM EXTENSION FOR EACH VALVE BURIED GREATER THAN 5'.

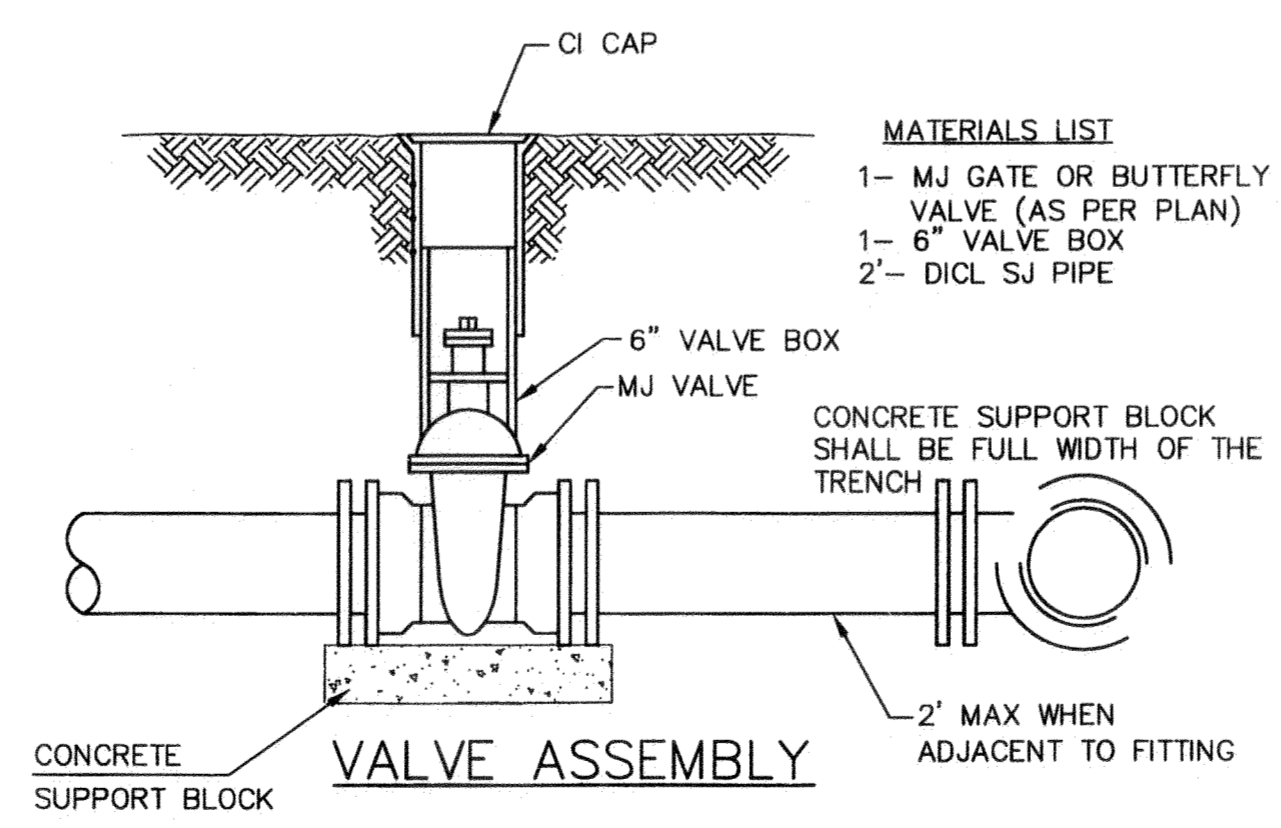


PROTECTIVE FILL DETAIL

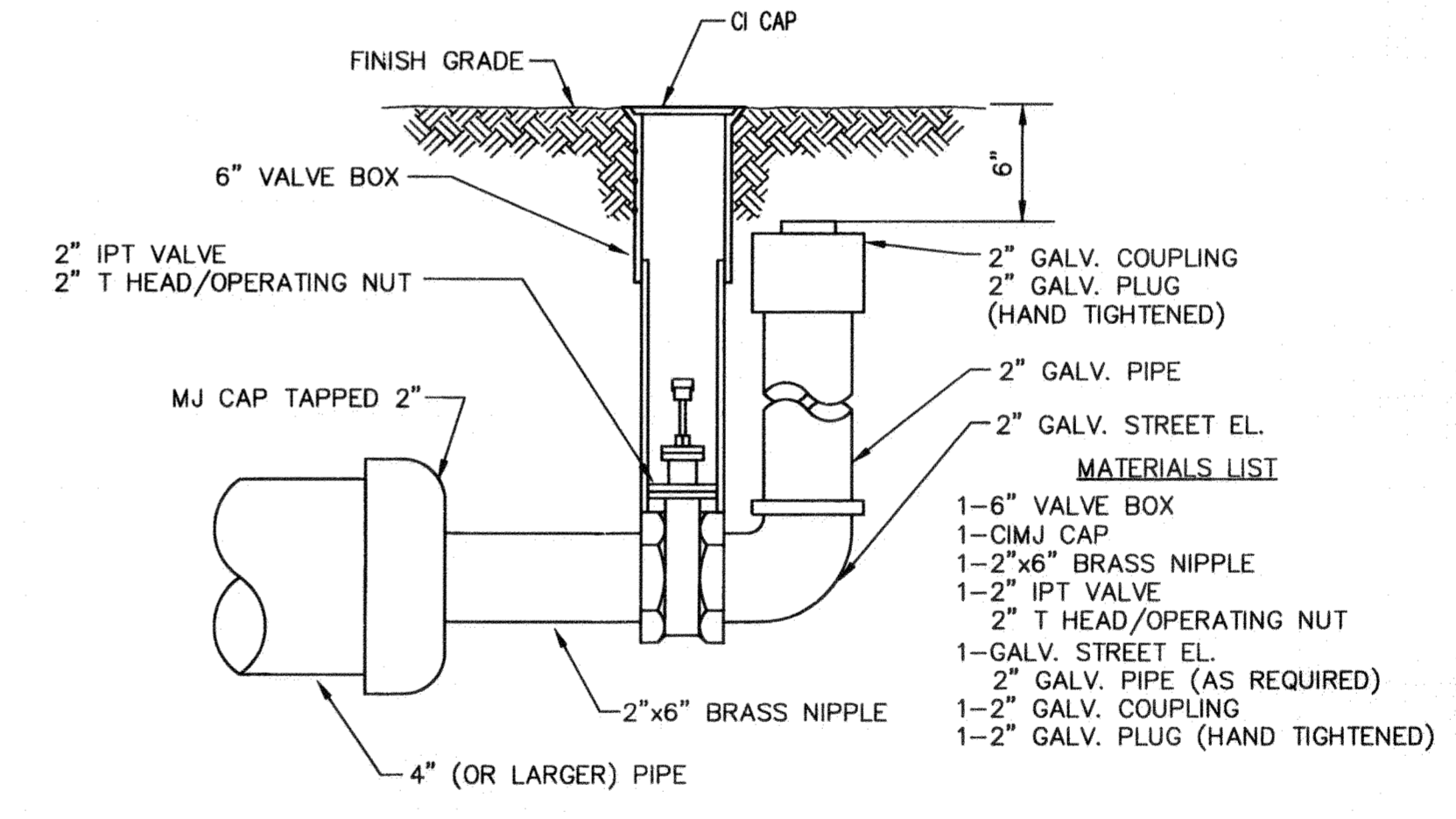
MINIMUM PROTECTIVE FILL SHALL BE PROVIDED IN ALL INSTANCES WHERE COVER OVER THE PROP. WATER LINE IS LESS THAN 3'. (COST SUBSIDIARY TO PIPE INSTALLATION)



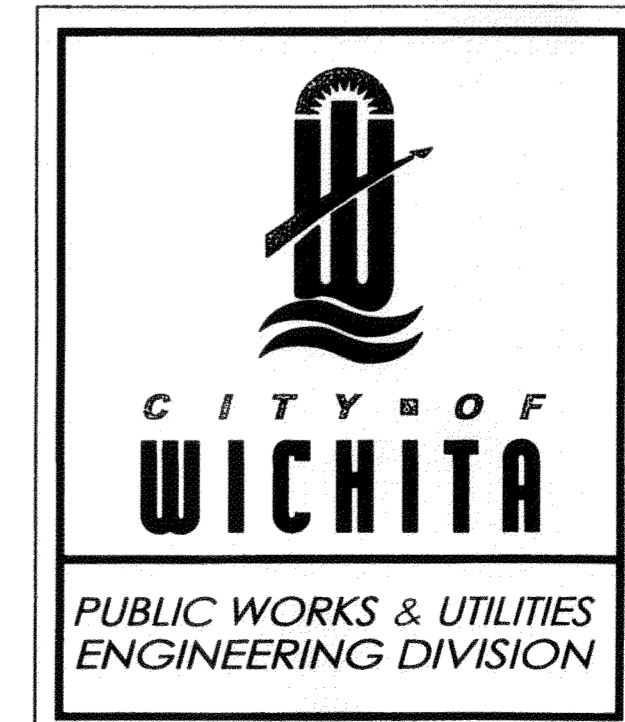
ANCHORED VALVE ASSEMBLY



VALVE ASSEMBLY



2" BLOWOFF ASSEMBLY



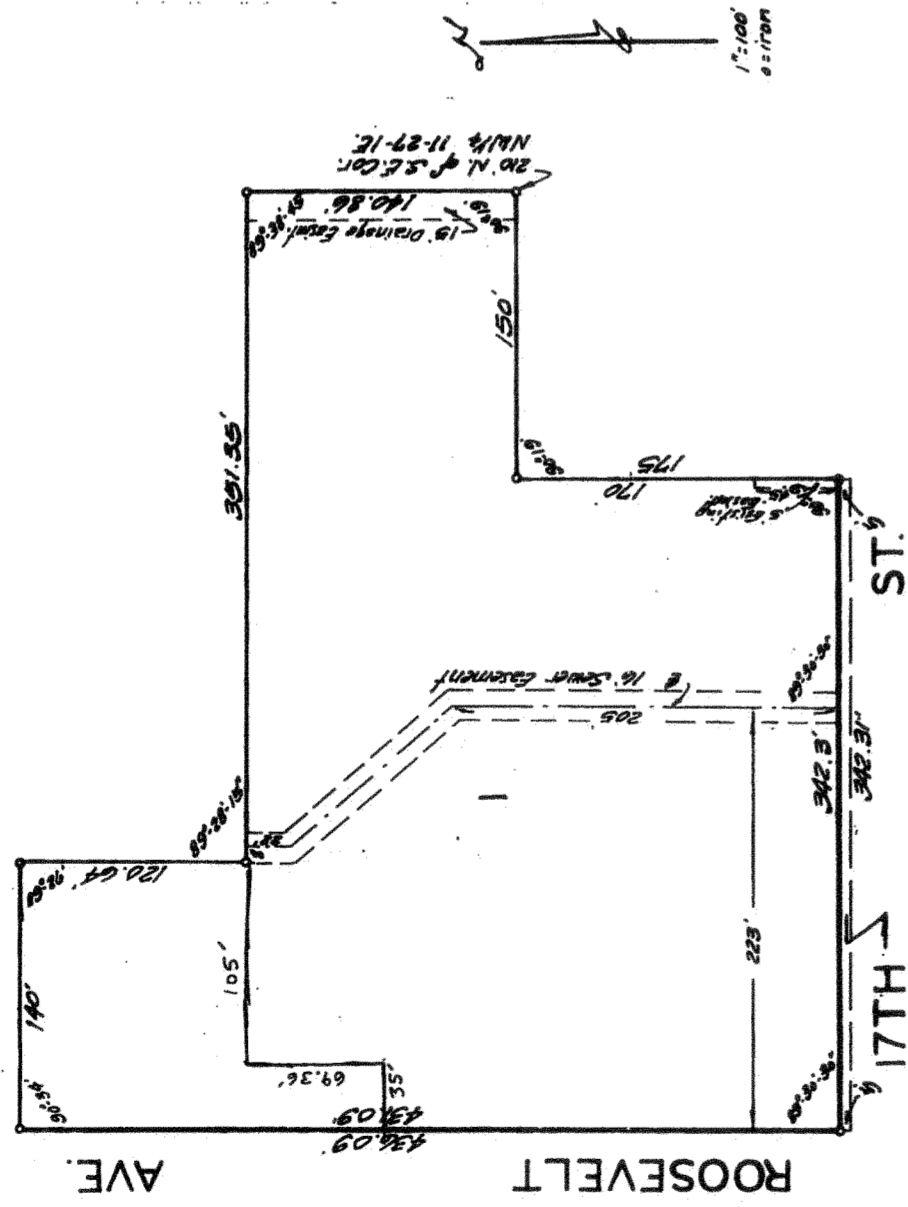
STANDARD WATER ASSEMBLY DETAIL		
CITY ENGINEER Gary Janzen, P.E. Interim City Engineer		
PROJECT NUMBER 1678 PPW	OCA NUMBER NA	DATE 08/2012
CITY ENGINEER'S OFFICE CITY HALL - SEVENTH FLOOR 455 NORTH MAIN STREET WICHITA, KANSAS 67202-1620 (316) 268-4501		SHEET 2 of 4

E:\Projects\St. Paul Newman Center\PPW.dwg

NEWMAN CENTER ADDITION

TO WICHITA, KANSAS.

6/16/66
6/15/66



State of Kansas } s.s. We, Baughman Company, Surveyors
Sequoia County } and state do hereby certify that we have
in approved county and state do hereby certify that we have
surveyed and platted "NEWMAN CENTER ADDITION" to
Wichita, Kansas, and that the accompanying plat is a
true and correct exhibit of the property surveyed, being
a replat of the west 140 feet of the N 1/2 of Reserve "B"
except the north 180 feet thereof and the S 1/2 of Reserve
"B" together with the north 15 feet of vacant 17th Street
except the east 150 feet of the south, 175 feet thereof, all
in Fairmount 4th Addition to Wichita, Kansas.

Baughman Company, Surveyors
Frederic J. Baughman Surveyor

that we, Catholic Diocese of Wichita, a nonprofit
corporation by law C. Byrne, President and Charles
F. Walsh, Secretary, have caused the land described
in the surveyors certificate to be platted into a lot and
street to be known as "NEWMAN CENTER ADDITION" to
Wichita, Kansas. An easement is hereby granted as
indicated for the construction and maintenance of
sanitary sewer. A drainage easement is hereby granted
as indicated for drainage purposes. The street is hereby
dedicated to and for the use of the public.

Catholic Diocese of Wichita
Charles F. Walsh Vice President
Charles F. Walsh Secretary

State of Kansas } Be it remembered that on this 30 day of
Sequoia County } November 1965, before me a Notary Public in and for
said county and state came James Truesdell, President and Charles
F. Walsh, Secretary, of Catholic Diocese of Wichita, to me
known to be the same persons who executed the foregoing
instrument of writing and duly acknowledged the execution
of the same. In testimony whereof I have hereunto set
my hand and affixed my notarial seal the day and year
above written.

My Commission Expires: 8-31-68 Notary Public
Lawrence J. Luban

This plat of "NEWMAN CENTER
ADDITION" to Wichita, Kansas, has been approved by
the Wichita-Sequoia County Metropolitan Area Planning
Commission, Wichita, Kansas, and is hereby transmitted to
the Board of Commissioners of the City of Wichita, Kansas,
with the recommendation that such plat be approved as proposed.
Dated this 8th day of NOVEMBER 1965.

Wichita-Sequoia County Metropolitan Area Planning Commission
W. C. Kelly V.P. - Chairman
C. Bickley Secretary

missioners this 25th day of January 1966.

John Navon Mayor
Robert E. Green City Clerk

Entered on Transfer record this
7th day of February 1966
W. D. Williams County Clerk

of National Security. We, The Travelers Insurance
Company, holders of a mortgage on a portion of the
above described property do hereby consent to this plat.

The Travelers Insurance Company

James Truesdell SECOND VICE PRESIDENT
Charles F. Walsh SECRETARY

State of Connecticut } s.s. Be it remembered that on this 9th day
County of Sequoia } before me a Notary Public in and for
of December 1965, before me a Notary Public in and for
County and state came James Truesdell and J. S. Pose
of The Travelers Insurance Company, to me known
to be the same persons who executed the foregoing instrument
of writing and duly acknowledged the execution of the same
as their voluntary act and deed. In testimony whereof I
have hereunto set my hand and affixed my notarial seal the
day and year above written.

My Commission Expires: April 1968 Notary Public
Alvin T. McCarty

We, Mid-Kansas Federal Savings and Loan
Association of Wichita, holders of a mortgage on a portion
of the above described property do hereby consent to this
plat.

Mid-Kansas Federal Savings and Loan Association
James F. Buntel
Paul H. Buntel

State of Kansas } s.s. Be it remembered that on this 22nd day
Sequoia County } of November 1965, before me a Notary Public in
said county and state came James Truesdell, President and
Secretary of Mid-Kansas Federal Savings and Loan Associa-
tion of Wichita, to me known to be the same persons who
executed the foregoing instrument of writing and duly
acknowledged the execution of the same. In testimony whereof
I have hereunto set my hand and affixed my notarial seal
the day and year above written.

My Commission Expires: 11-4-67 Notary Public
Lawrence J. Luban

We, American Savings Association of
Wichita, holders of a mortgage on a portion of the above de-
scribed property do hereby consent to this plat.

American Savings Association of Wichita
David M. Christman
Ray L. Slifer

State of Kansas } s.s. Be it remembered that on this 22nd day
Sequoia County } of November 1965, before me a Notary Public in
of Sequoia } county and state came James Truesdell, President and
Secretary of American Savings Association of Wichita,
to me known to be the same persons who executed the fore-
going instrument of writing and duly acknowledged the ex-
ecution of the same. In testimony whereof I have hereunto
set my hand and affixed my notarial seal the day and
year above written.

My Commission Expires: 2-22-69 Notary Public
Lawrence J. Luban

Approved by the Board of County
Commissioners this 1st day of February 1966

John Slifer Chairman
James F. Buntel Commissioner
Paul Johnson Commissioner
W. D. Williams County Clerk

28871

State of Kansas } s.s. This is to certify that this plat was
Sequoia County } filed for record in the office of the Register of Deeds this
7th day of January 1966, at 4:15 o'clock
P. M., and is duly recorded.

Raymond E. Manning Register of Deeds
Paul Slifer Deputy