

BENCHMARK:
 "□" Chiseled on Top of Curb, end of cul-de-sac of Meadow Oaks Circle, Meadow Oaks Addition.
 Elevation=1362.10 (NAVD 88)

"□" Chiseled on CL front of CB at end of cul-de-sac of Ironhorse Circle, Ironhorse Addition.
 Elevation=1362.07 (NAVD 88)

Thoroughly compact soil on North, Southwest, and Southeast edges of concrete pad, to eliminate future erosions. Grades shall allow positive drainage down slope onto the concrete pad.

14.0 S.Y. Rip-Rap to be installed on Southern edge of concrete pad, Light Stone. Refer to City of Wichita's specifications.

Indicates tree to be removed by contractor. To be paid for as lump sum bid item "Site Clearing"

All other trees shall remain and be protected from damage during construction. Overhanging limbs shall be trimmed (by chainsaw if necessary) by the Contractor only as necessary for construction and with approval of the Engineer. Cost of tree trimming to be included in bid item "Site Clearing".

Sta 0+00, Begin Line 1
 1 - Headwall, RC 36"
 Restrained joint for two sections back from headwall.
 75.0 S.Y. Rip-Rap, Light Stone. See detail, sheet 8.

*Contractor to supply shop drawings for the special inlet, stamped by a Professional Engineer, licensed in the State of Kansas.

Sta 0+58.00, Line 1 = Sta 0+00, Line 1A
 Construct Inlet, Drop (Special 3'x6")*
 Top Elev. = 1358.64

CAUTION!
 Ex. 8" & 12" Sewer Crossing

Area between concrete pad and inlet at Sta 0+63.49, shall be regraded with grass lined swale with positive drainage from existing concrete pad to inlet. Regrading to be incidental to "Grading, Ditch".

Sta 0+15.95, End Line 1A
 Remove existing 18" end section and Rip Rap
 Construct MH, Standard SWS (4')
 Top Elev. = 1361.33
 Connect to existing 18" RCP (NE)

Remove and replace fence as necessary for construction. See Side Note.

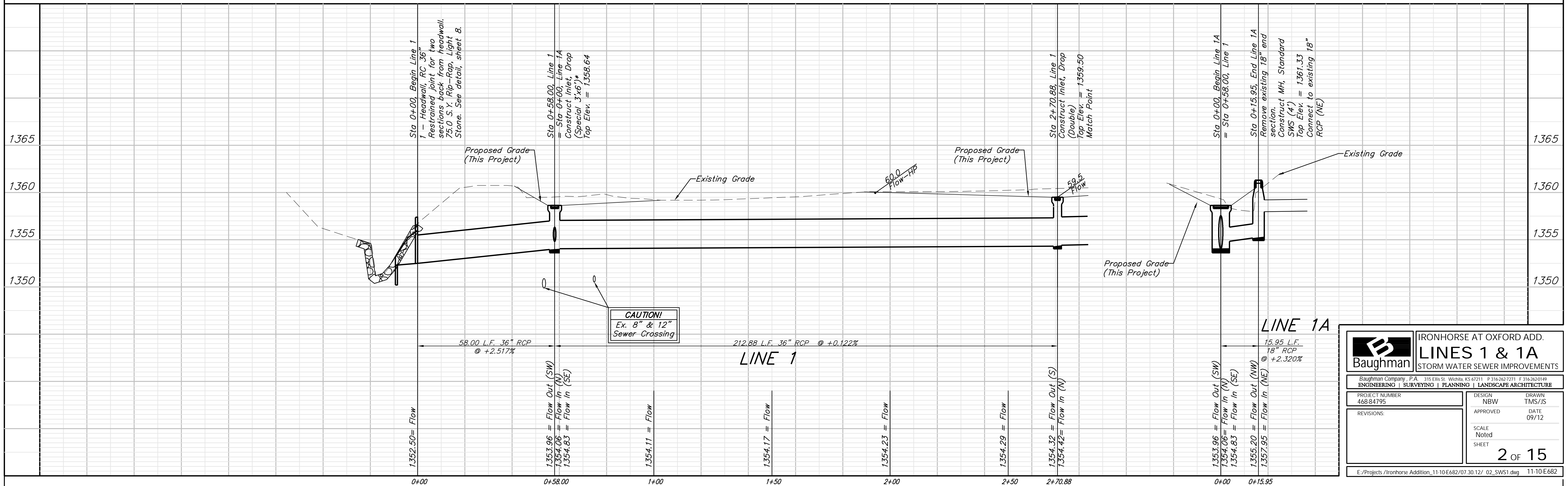
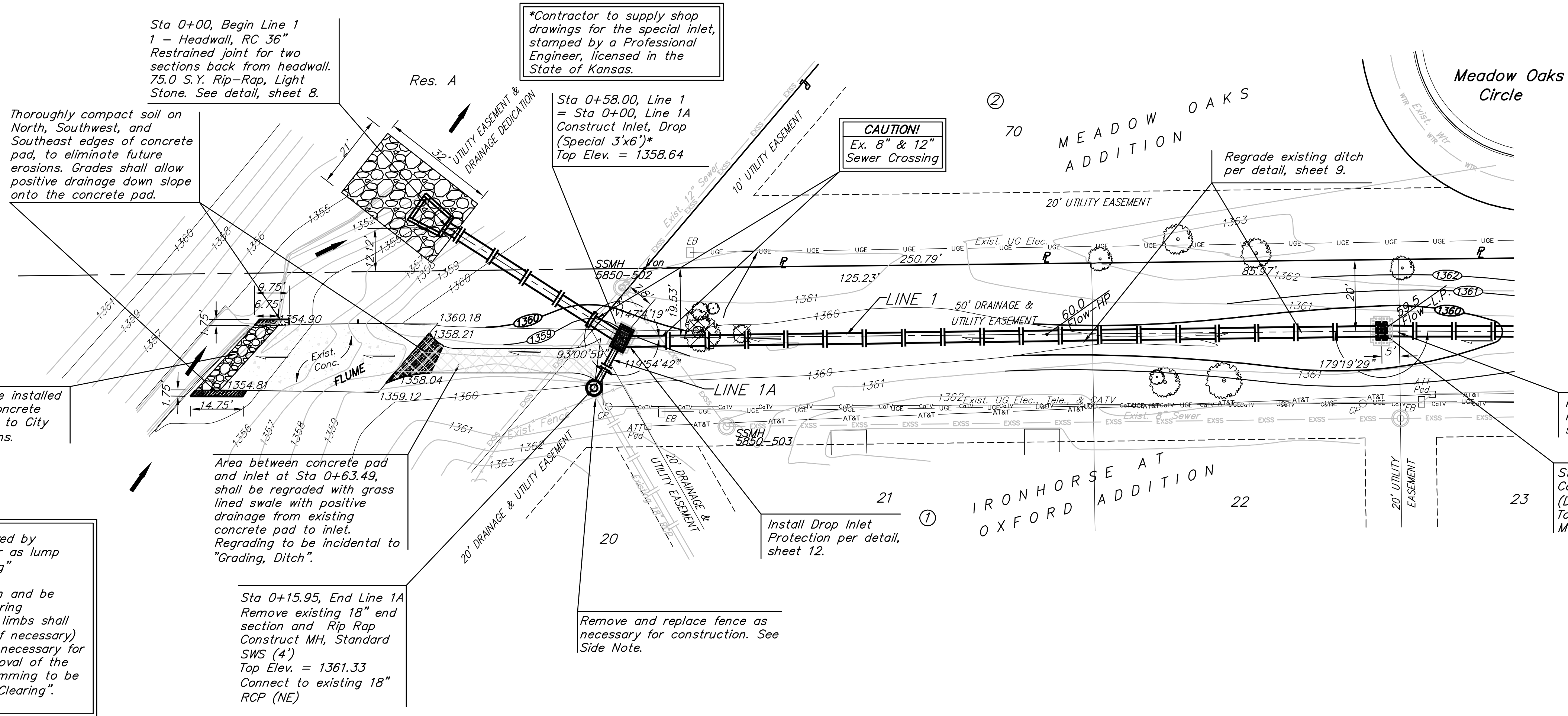
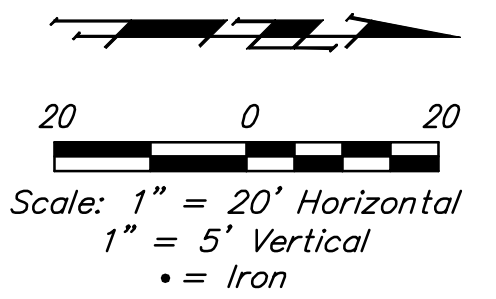
Install Drop Inlet Protection per detail, sheet 12.

Install Drop Inlet Protection per detail, sheet 12.

Sta 2+70.88, Line 1
 Construct Inlet, Drop (Double)
 Top Elev. = 1359.50
 Match Point

Caution:
 Remove and replace fence as necessary for construction. Take caution to salvage as much existing materials as possible. Any replacement fencing shall be replaced with matching like material and stained to match existing fence. Cost of such replacement is to be included in bid item "Site Restoration".

Before fencing is to be removed, contractor shall give 48 hours notice to Property Landlord;
 Mr. Walter Young- Cell: (316) 393-5523
 Office: (316) 838-2828
 to provide advanced notice to tenants who may be disturbed.



Baughman IRONHORSE AT OXFORD ADD.
LINE 1 & 1A
 STORM WATER SEWER IMPROVEMENTS

Baughman Company, P.A. 315 Ellis St. Wichita, KS 67211 P: 316-262-7211 F: 316-262-0199
 ENGINEERING | SURVEYING | PLANNING | LANDSCAPE ARCHITECTURE

PROJECT NUMBER 468-84795	DESIGN NBW	DRAWN TMS/JS
REVISIONS:	APPROVED	DATE 09/12
	SCALE Noted	SHEET 2 OF 15

E:\Projects\Ironhorse Addition_11-10-E682\07_30_12\ 02_SWS1.dwg 11-10-E682