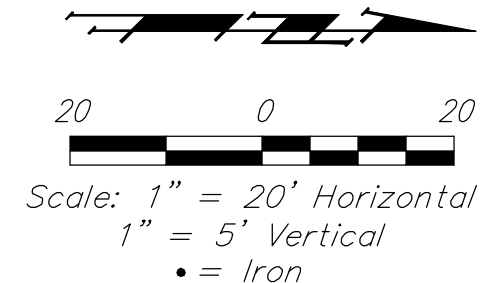
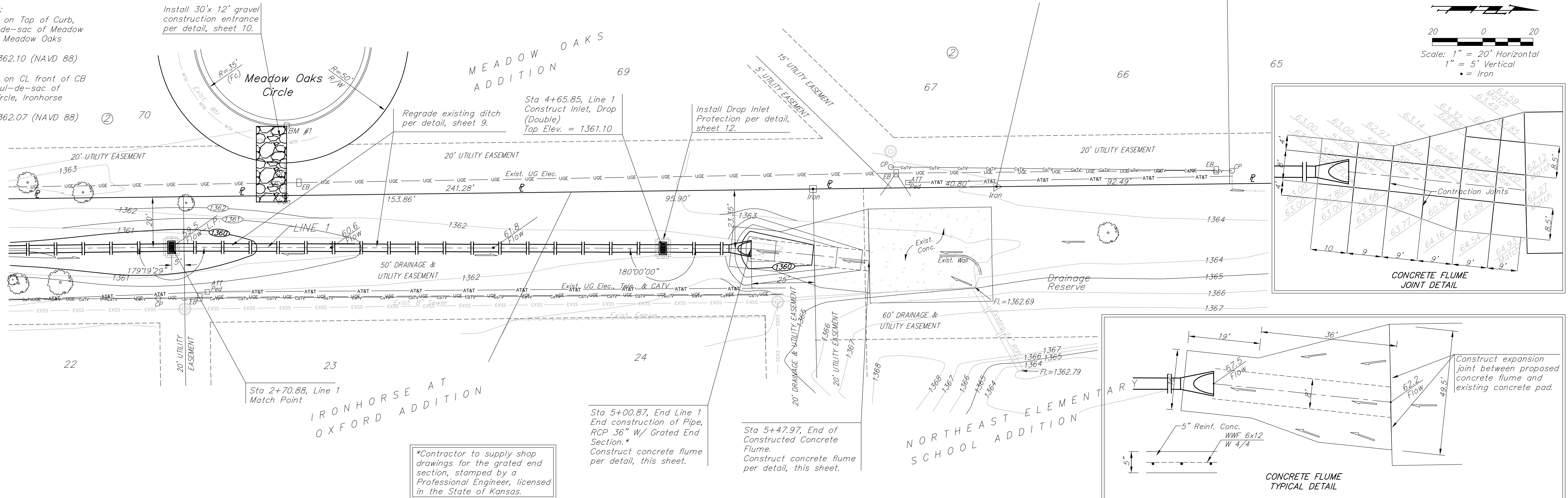


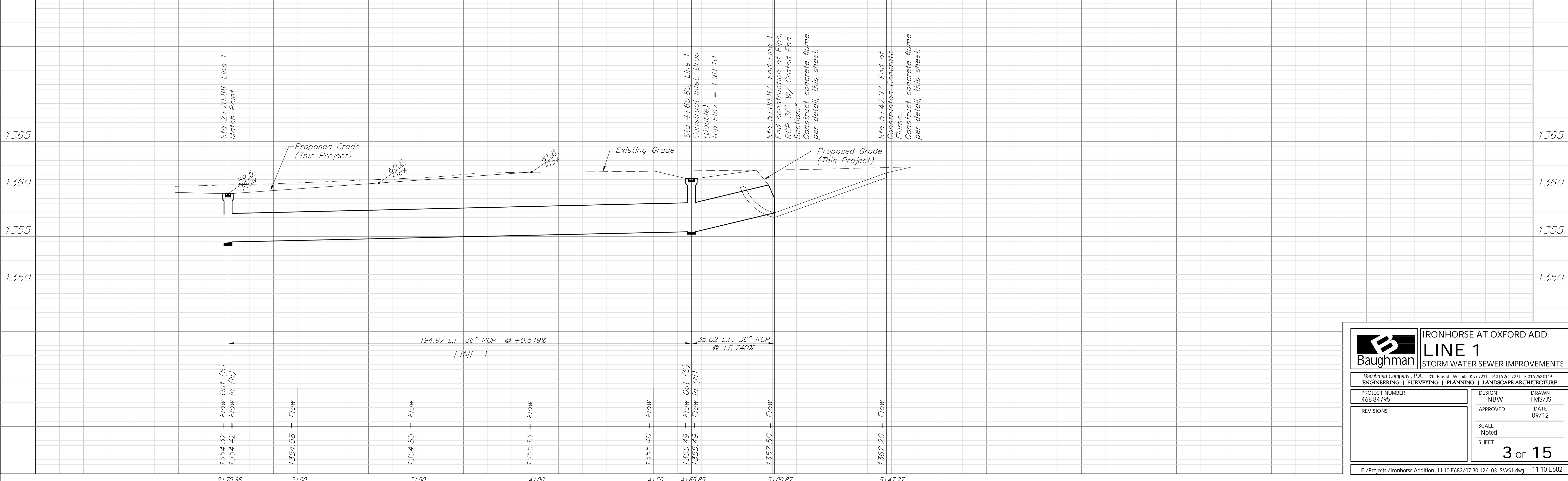
BENCHMARK:
 "□" Chiseled on Top of Curb,
 end of cul-de-sac of Meadow
 Oaks Circle, Meadow Oaks
 Addition.
 Elevation=1362.10 (NAVD 88)

"□" Chiseled on CL front of CB
 at end of cul-de-sac of
 Ironhorse Circle, Ironhorse
 Addition.
 Elevation=1362.07 (NAVD 88)

Install 30'x 12' gravel
 construction entrance
 per detail, sheet 10.



*Contractor to supply shop
 drawings for the grated end
 section, stamped by a
 Professional Engineer, licensed
 in the State of Kansas.



	IRONHORSE AT OXFORD ADD. LINE 1 STORM WATER SEWER IMPROVEMENTS	
	<small>Baughman Company, P.A. 215 Ellis St. Wichita, KS 67211 P 316-262-7271 F 316-262-0149 ENGINEERING SURVEYING PLANNING LANDSCAPE ARCHITECTURE</small>	
PROJECT NUMBER 468-84795	DESIGN NBW	DRAWN TMS/JS
REVISIONS:	APPROVED	DATE 09/12
SCALE Noted		SHEET 3 OF 15
<small>E:\Projects\Ironhorse Addition_11-10-E682\07.30.12\ 03_SWS1.dwg 11-10-E682</small>		