

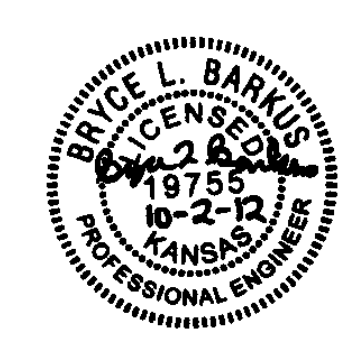
# STORM WATER DRAIN PLANS #381 REMINGTON PLACE ADDITION

PROJECT NO. 468-84787

THE CITY OF WICHITA, KANSAS  
GARY L. JANZEN, INTERIM CITY ENGINEER

OCA NO. 751512

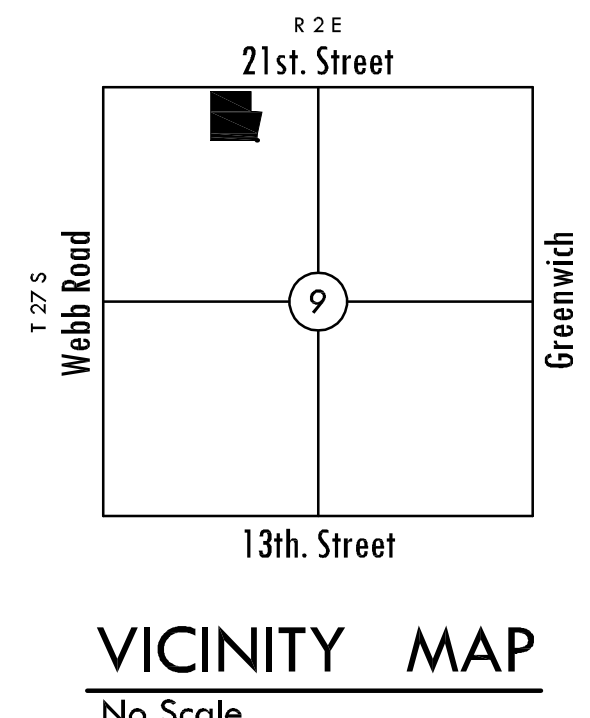
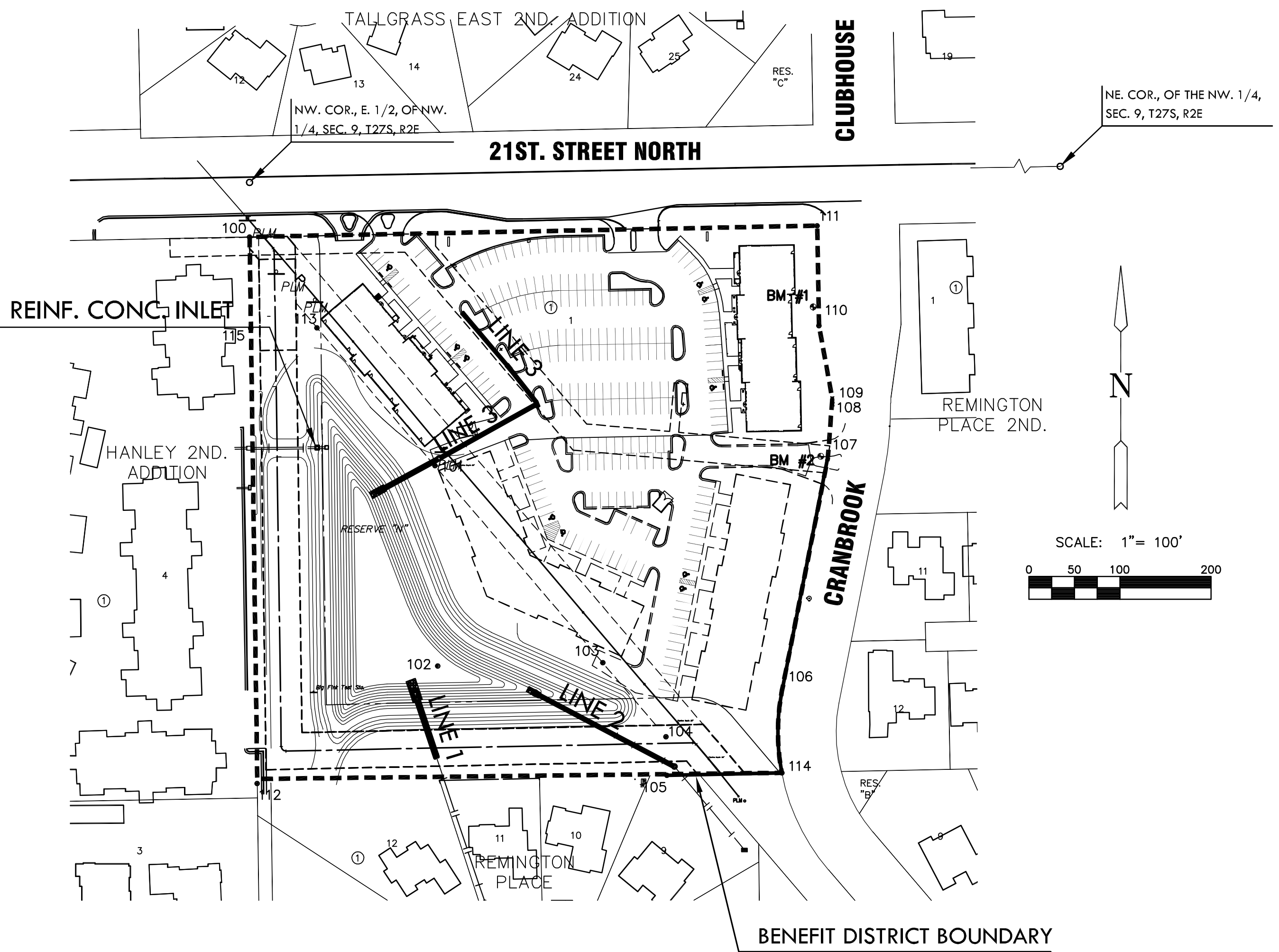
**MKEC**  
ENGINEERING  
CONSULTANTS, INC.  
411 N. WEBB ROAD  
WICHITA, KS. 67206  
316-684-9600



## GENERAL NOTES

- UNLESS SHOWN OR OTHERWISE STATED ON THESE DRAWINGS, MATERIALS AND CONSTRUCTION SHALL BE IN ACCORDANCE WITH THE CITY OF WICHITA STANDARD SPECIFICATIONS.
  - THE TOPS OF INLETS AND MANHOLES AS NOTED ON THE PLANS MAY VARY SO AS TO MEET PROPOSED TOP OF CURB ELEVATIONS OR PAVEMENT ELEVATIONS. THE FIELD ENGINEER SHALL LOCATE INLETS AND MANHOLES WITH REFERENCE TO PROPOSED PAVING PLANS OF THE PERTINENT STREETS.
  - ALL CONCRETE SHALL BE STANDARD PAVING MIX UNLESS OTHERWISE NOTED.
  - THE CONTRACTOR SHALL BE RESPONSIBLE FOR PRESERVING PROPERTY IRONS. THE CONTRACTOR SHALL BE REQUIRED TO RE-ESTABLISH ANY PROPERTY IRONS WHICH ARE DAMAGED OR DESTROYED BY HIS CONSTRUCTION OPERATIONS. SUCH IRONS SHALL BE RE-ESTABLISHED BY A LICENSED LAND SURVEYOR IN ACCORDANCE WITH STATE LAWS.
  - CONTRACTOR SHALL NOTIFY UTILITY COMPANIES OF CONSTRUCTION SCHEDULING.
  - EXISTING UTILITIES AND THEIR LOCATIONS, AS SHOWN ON THE PLANS REPRESENT THE BEST INFORMATION OBTAINABLE FOR DESIGN. LOCATION INFORMATION HAS BEEN OBTAINED FROM THE VARIOUS COMPANIES AND IS EITHER FROM COMPANY UTILITY DRAWINGS OR COMPANY PROVIDED FIELD LOCATIONS. THE PLAN LOCATIONS SHOWN ARE NOT GUARANTEED. ADDITIONAL EXISTING UTILITIES MAY ALSO BE ENCOUNTERED.
  - CONTRACTOR WILL BE REQUIRED TO PROVIDE A MINIMUM ADVANCE NOTICE OF SEVENTY-TWO (72) HOURS TO UTILITY COMPANIES TO STARTING ANY EXCAVATION AS FOLLOWS:  
  
KANSAS ONE-CALL 800-344-7233  
OR 687-2470 (LOCAL WICHITA)
- THE CONTRACTOR MUST NOTIFY THE FOLLOWING IN CASE OF EMERGENCY:
- |                               |              |
|-------------------------------|--------------|
| COX COMMUNICATIONS (CABLE)    | 262-0661     |
| WESTAR (ELECTRIC)             | 261-6512     |
| KANSAS GAS SERVICE (GAS)      | 832-3101     |
| SBC (TELEPHONE)               | 800-870-8390 |
| CITY OF WICHITA WATER & SEWER | 262-6000     |
| BLACK HILLS ENERGY (GAS)      | 800-303-0357 |
- RUBBLE FROM THE REMOVAL OF MISCELLANEOUS STRUCTURES AND EXCESS EXCAVATION WHICH IS TO BE WASTED SHALL BE DISPOSED OF ON SITES TO BE PROVIDED BY THE CONTRACTOR. THESE SITES SHALL BE APPROVED BY THE ENGINEER AS TO SUITABILITY, APPEARANCE AND SITE LOCATION. LOCATIONS THAT, IN THE OPINION OF THE ENGINEER, WILL LEAVE AN UNSIGHTLY APPEARANCE WILL NOT BE APPROVED. ALL DISPOSAL SITES MUST BE APPROVED BY THE KANSAS DEPARTMENT OF HEALTH AND ENVIRONMENT. MATERIAL EITHER STOCKPILED OR DISPOSED OF IN A FLOOD PLAIN WOULD REQUIRE A KANSAS STATE BOARD OF AGRICULTURE PERMIT. ANY MATERIAL DUMPED IN WATERS OF THE UNITED STATES OR WETLANDS IS SUBJECT TO U.S. CORPS OF ENGINEERS PERMITTING REGULATIONS. ANY MATERIAL BURIED OR STOCKPILED BEYOND APPROVED CONSTRUCTION LIMITS WOULD REQUIRE ADDITIONAL ARCHAEOLOGICAL INVESTIGATIONS UNLESS BURIED IN A PREVIOUSLY APPROVED BORROW LOCATION.
  - CONTRACTOR SHALL RESEED AND MULCH ALL DISTURBED AREAS. COST SHALL BE CONSIDERED SUBSIDIARY TO SITE RESTORATION.
  - DEVELOPER FOR THIS PROJECT IS:  
21 WEBB LLC  
8111 E. 32ND, ST. N. SUITE 101  
WICHITA, KS 67226  
CONTACT - GARY OBORNY  
(316-262-3331)
  - IT SHALL BE THE CONTRACTOR'S RESPONSIBILITY TO DEWATER THE EXISTING POND.
  - EXISTING CRUDE PIPELINE AND CATHODIC PROTECTION SYSTEM GROUND BED TO BE RELOCATED BY OTHERS. CONTRACTOR SHALL COORDINATE WITH DENNIS YOUNG, COFFEYVILLE RESOURCES SUPERVISOR, @ (620)870-0512 (M) OR (620)221-2107 (OFFICE) PRIOR TO ON-SITE MOBILIZATION.

PROPOSED IMPERVIOUS=4.84 AC.  
PROPOSED DISTURBED PERVIOUS=0.85 AC.  
W<sub>Qv</sub>=0.48 AC.-FT.  
CP<sub>v</sub>=0.75 AC.-FT.



## INDEX TO DRAWINGS

SHEET NO.	DESCRIPTION
1	TITLE SHEET
2	MANHOLE DETAILS
3	INLET DETAILS
4	REINF. CONC. INLET DETAILS
5	PLAN & PROFILE LINES 1 & 2
6	PLAN & PROFILE LINE 3
7	GRADING PLAN
8	EROSION CONTROL PLAN
9	EROSION CONTROL DETAILS
10-14	BMP DETAILS
15	PLAT

## BENCHMARKS

- BM#1 CHISELED "X" ON SIDEWALK AT PC OF CURVE, 255 FEET SOUTH OF THE NORTHEAST CORNER OF LOT 1, BLOCK 1, REMINGTON PLACE. ELEV.=1398.34 NAVD 88
- BM#2 CHISELED "V" ON SIDEWALK AT PC OF CURVE, 89' NORTH OF THE SOUTHEAST CORNER OF LOT 1, BLOCK 1, REMINGTON PLACE. ELEV.=1399.96 NAVD 88

## POND OUTLET STRUCTURE

4x4 DROP INLET STRUCTURE  
RIM=1389.8  
W/6" ORIFICE IN FL-1388.8  
24" PIPE OUT FL-1385.68

## POND TABLE

ELEV.	STORAGE (AC/FT)	DISCHARGE (CFS)
1388.8	-	-
1389.0	0.20	0.11
1389.8	1.05	0.82
1390.0	1.28	5.69
1391.0	2.47	32.38
1392.0	3.78	36.43
1393.0	5.26	39.80

## CONTROL POINTS

PT. NO.	NORTHING	EASTING	DESCRIPTION
100	1699664.34	1682249.19	5/8" REBAR W/ MKEC CAP
101	1699413.31	1682452.87	1/2" REBAR W/R&B CAP
102	1699193.32	1682455.74	1/2" REBAR W/R&B CAP
103	1699197.11	1682637.16	1/2" REBAR W/R&B CAP
104	1699115.69	1682706.51	1/2" REBAR W/R&B CAP
105	1699073.39	1682707.38	1/2" REBAR W/R&B CAP
106	1699165.22	1682833.71	XCUT
107	1699422.31	1682884.22	XCUT
108	1699480.93	1682889.29	XCUT
109	1699487.21	1682889.12	XCUT
110	1699566.93	1682874.50	3/4" PIPE
111	1699676.67	1682872.59	3/4" PIPE
112	1699064.20	1682257.67	MAGNAIL
113	1699564.85	1682323.19	1/2" REBAR W/R&B CAP
114	1699075.97	1682833.62	1/2" REBAR W/R&B CAP
115	1699564.06	1682250.61	1/2" REBAR W/R&B CAP

STORM WATER DRAIN PLANS FOR  
**REMINGTON PLACE ADDITION**  
PROJECT NO. 468-84787

## TITLE SHEET

SHEET TITLE  
**1201010125**  
PROJECT NUMBER

SPE / DM / BLB  
DESIGNED / DRAWN / CHECKED

ISSUED  
**September 2012**

REVISED

SHEET NO.  
**1 of 15**