



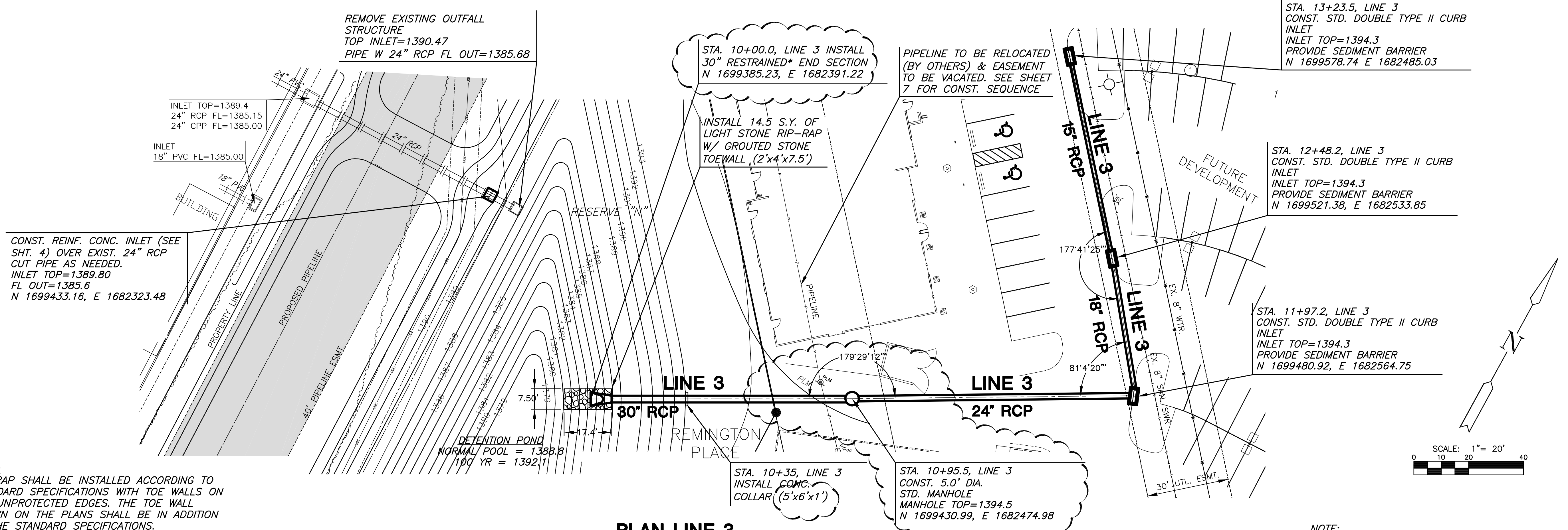
STORM WATER DRAIN PLANS FOR
REMINGTON PLACE ADDITION
PROJECT NO. 468-84787

SWS PLAN & PROFILE LINE 3
SHEET TITLE
1201010125
PROJECT NUMBER

SPE | DM | BLB
DESIGNED | DRAWN | CHECKED

ISSUED
September 2012
REVISED
R1 10/9/12

SHEET NO.
6 of 15



NOTE:
RIP RAP SHALL BE INSTALLED ACCORDING TO STANDARD SPECIFICATIONS WITH TOE WALLS ON ALL UNPROTECTED EDGES. THE TOE WALL SHOWN ON THE PLANS SHALL BE IN ADDITION TO THE STANDARD SPECIFICATIONS.

NOTE:
COST ASSOCIATED WITH THE REMOVAL OF EXIST. STRUCTURES SHALL BE SUBSIDIARY TO SITE CLEARING.

NOTE:
* - CONTRACTOR SHALL RESTRAIN THE LAST TWO JOINTS AT THE OUTFALL

NOTE:
PROTECTIVE FILL MAY BE NEEDED. CONTRACTOR SHALL ENSURE 1' MINIMUM COVER OVER ALL STORM WATER SEWER PIPE.

