

STORM WATER DRAIN PLANS FOR
REMINGTON PLACE ADDITION
PROJECT NO. 468-84787

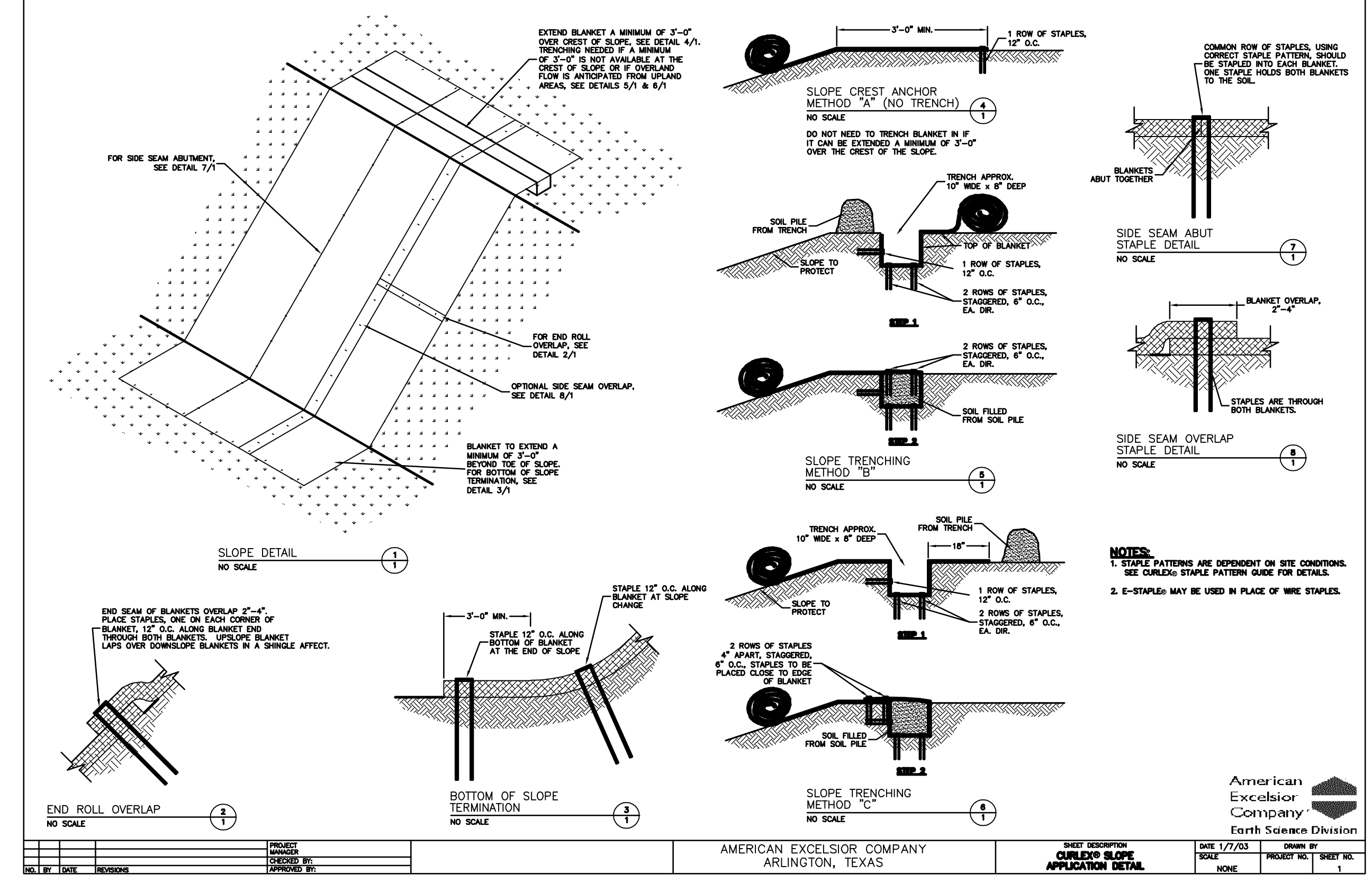
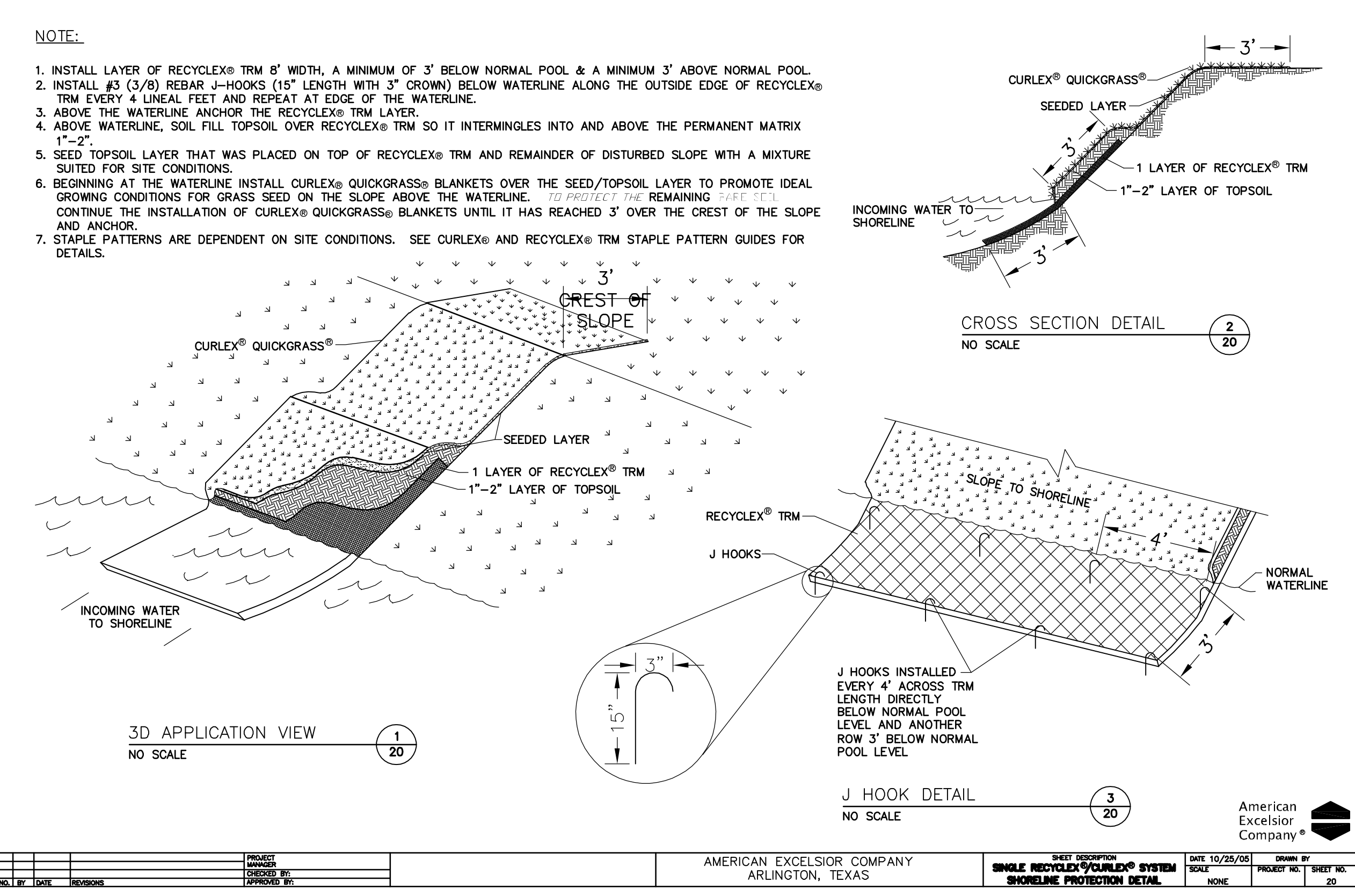
EROSION DETAILS
SHEET TITLE
1201010125
PROJECT NUMBER

SPE / DM / BLB
DESIGNED / DRAWN / CHECKED

ISSUED
September 2012

SHEET NO.
9 of 15

J:\PROJECTS\2012\1201010125_OCIDENTAL_CRANBROOK\5-CIVIL\CAD\SWS\12125_DD_4.DWG

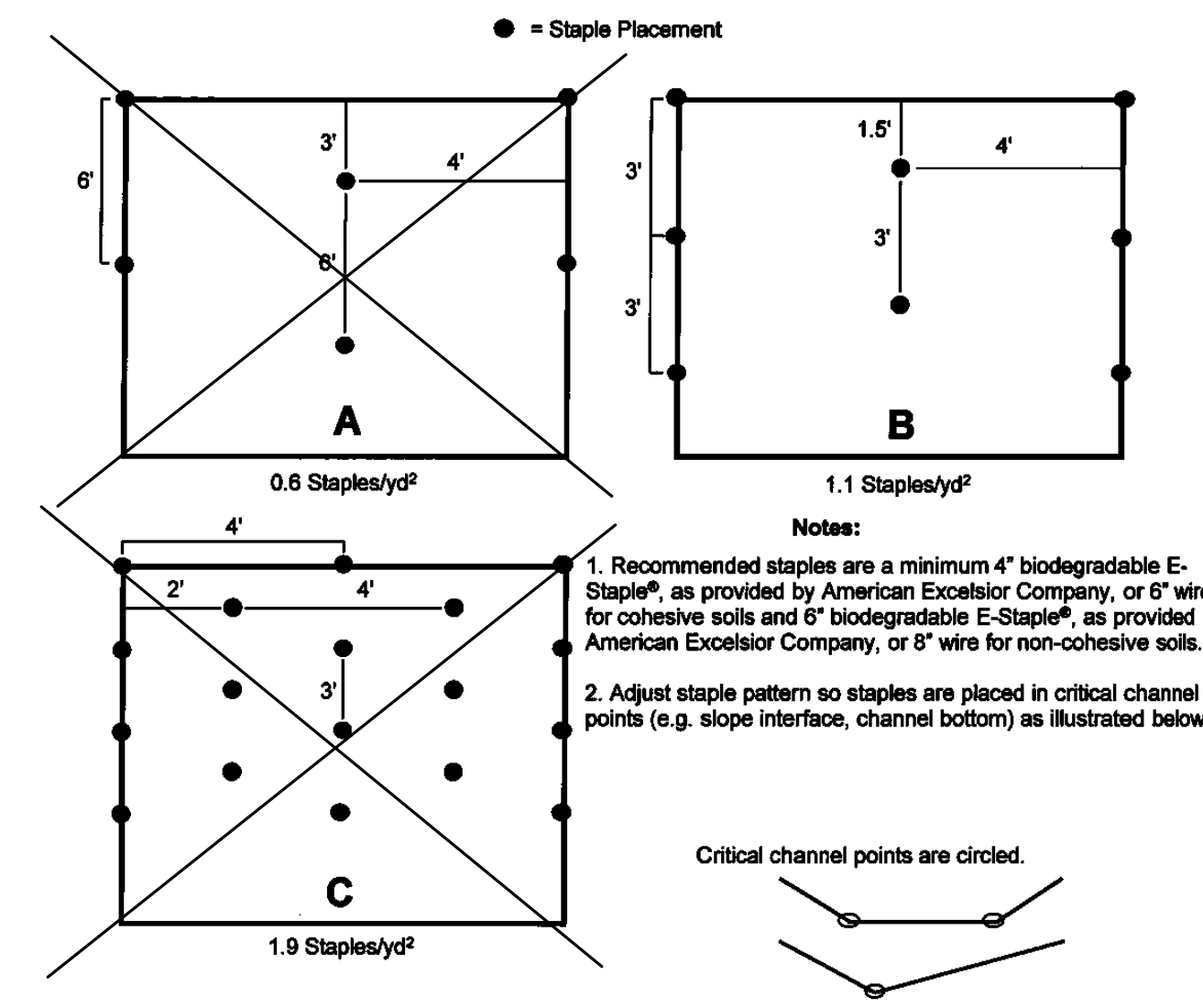


Curlex® Staple Pattern Guide

For 8' wide Curlex Erosion Control Blankets
Adjust horizontal staple spacing for 4', 12', and 16' wide Curlex Erosion Control Blankets

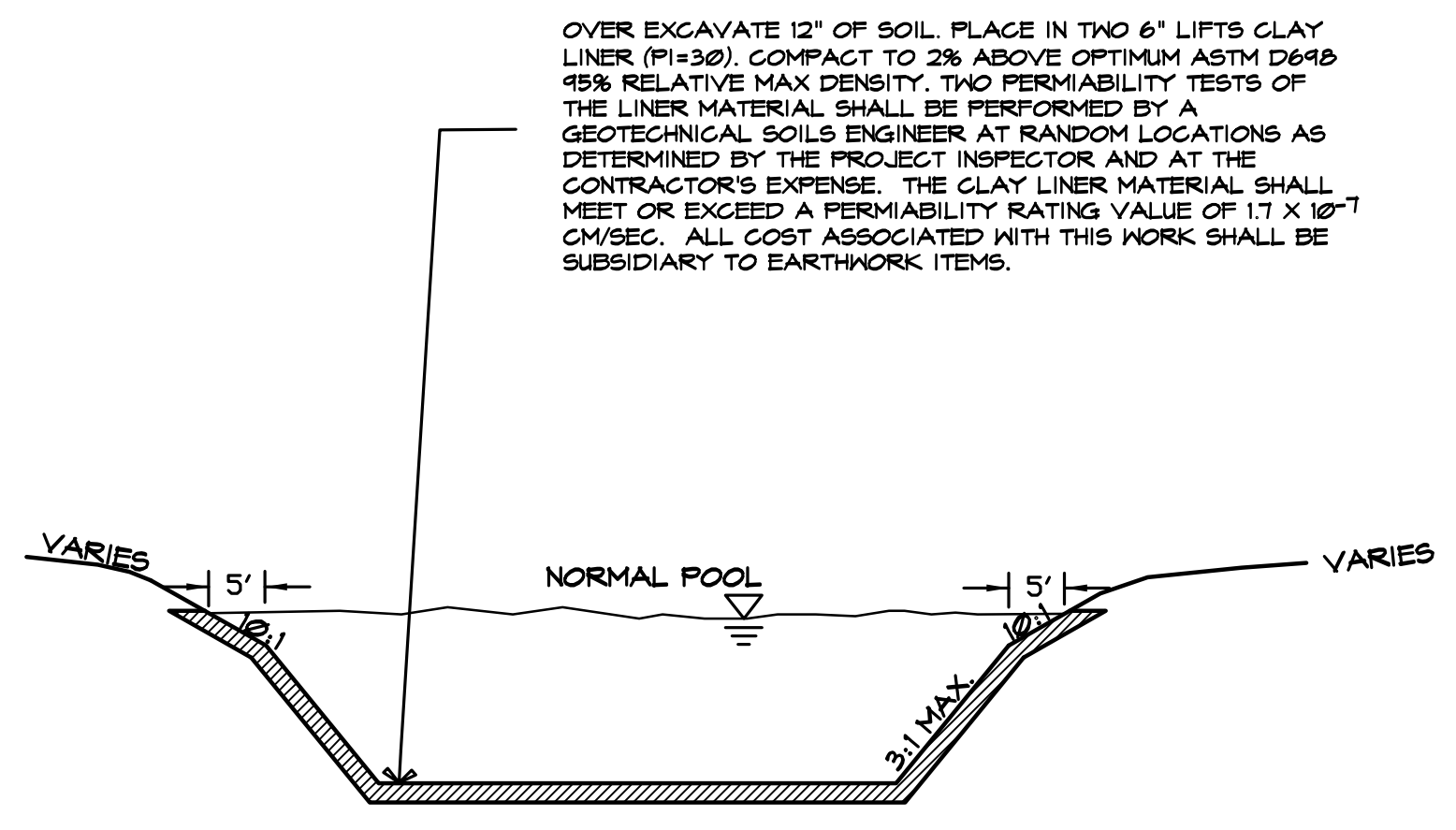
Application	Slope		
	≤ 4:1	≤ 3:1	≤ 0.5:1
Staple Pattern	A	B	C

Channel
≤ 10.0 lb/ft² (480 Pa) Shear Stress
≤ 17 ft/sec (5.2 m/sec) Velocity

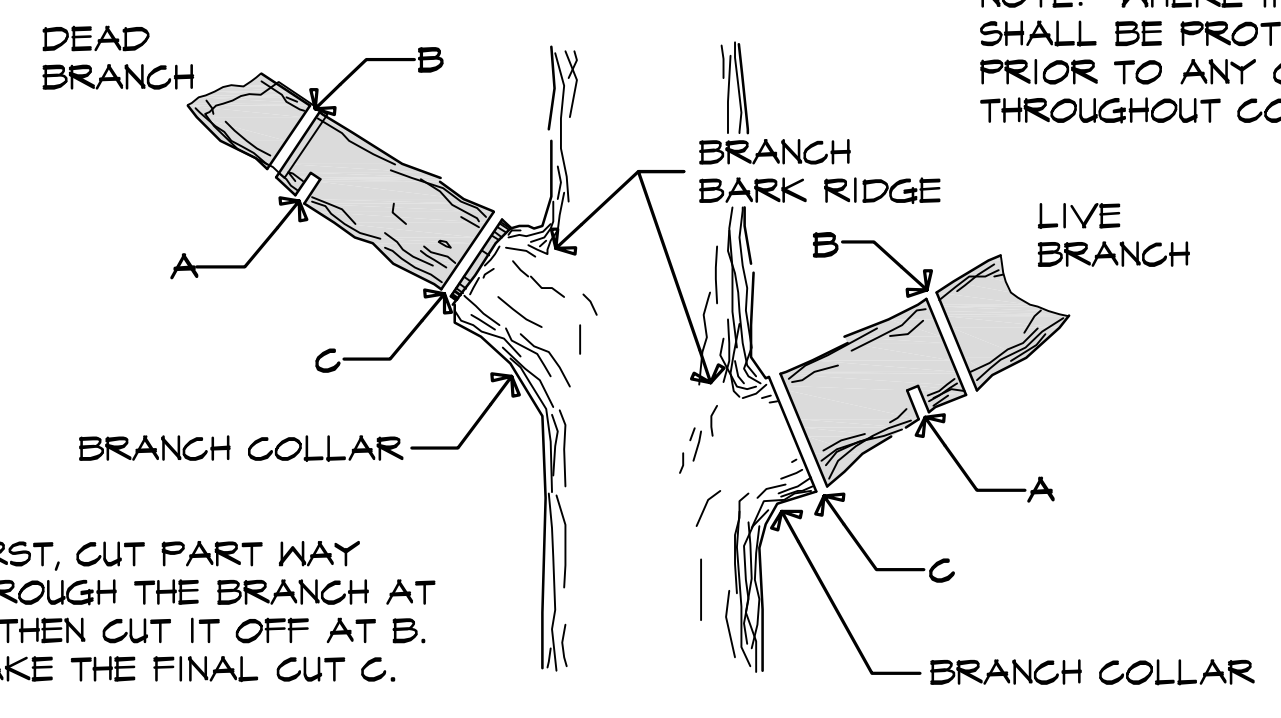


850 Avenue H East / Arlington, Texas 76011
Phone 1-800-777-SOIL / Fax 817-385-3585 / www.Curlex.com

W1210R0212



OVER EXCAVATE 12" OF SOIL. PLACE IN TWO 6" LIFTS CLAY LINER (FH-30). COMPACT TO 2% ABOVE OPTIMUM ASTM D698 45% RELATIVE MAX DENSITY. TWO PERMIABILITY TESTS OF THE LINER MATERIAL SHALL BE PERFORMED BY A GEOTECHNICAL SOILS ENGINEER AT RANDOM LOCATIONS AS DETERMINED BY THE PROJECT INSPECTOR AND AT THE CONTRACTOR'S EXPENSE. THE CLAY LINER MATERIAL SHALL MEET OR EXCEED A PERMIABILITY RATING VALUE OF 1.7 X 10⁻⁷ CM/SEC. ALL COST ASSOCIATED WITH THIS WORK SHALL BE SUBSIDIARY TO EARTHWORK ITEMS.



NOTE: WHERE INDICATED, TREES SHALL BE PROTECTED AS SHOWN PRIOR TO ANY CONSTRUCTION AND THROUGHOUT CONSTRUCTION.

FIRST, CUT PART WAY THROUGH THE BRANCH AT A; THEN CUT IT OFF AT B. MAKE THE FINAL CUT C.

PLOTTED: Tuesday, October 02, 2012 @ 10:59 AM