

FIRE HYDRANT TO SERVE Mid Continent Airport

Lease Corp Hanger Facility

City of Wichita Private Project Number:
1677 PPW (607853)

August 2012

Benchmark

Benchmark-1
Chiseled on Drop Inlet top in ditch near SW corner of site.
Elev. = 1,316.01 (NAVD 88)

Index

Title/Plan/Profile Sheet	1
Detail Sheet	2
Copy of Plat	3
BMP Erosion Details	Available On Request

General Notes

1. Contractor will be required to provide notice to utility companies a minimum of forty-eight (48) hours prior to any excavation, as follows:

Kansas One-Call 687-2470
The Contractor must notify the following in case of an emergency:

Cox Communications	262-4270
Kansas Gas Service Company	1-888-482-4950
Westar Energy (Electric)	383-8650
Black Hills Energy (Gas)	1-800-303-0357
AT&T	268-2245
City of Wichita Water Dept. (Water)	268-4563
City of Wichita Sewer Maint. (SS)	268-4024
City of Wichita Storm Sewer Maint.	268-4090
City of Wichita Traffic Maint.	268-4034

2. All disturbed R/W areas not intended for pavement or sidewalk construction shall be seeded with Kansas Premium Fescue Blend at a rate of 8 lb./1000 Sq. Ft., fertilized with a 16-20-6 ratio at a rate of 4 lb./1000 Sq. Ft., and mulched with Prairie Hay at a rate of 92 lb./1000 Sq. Ft. Mulch shall be "patted" with forks or punched into soil to reduce loss due to wind.

3. Utility service lines, poles, valve boxes, meters, et cetera are to be adjusted as necessary by others prior to construction unless the plans specifically call for their adjustment by the Contractor or unless the plans specifically identify a utility to be adjusted by its owner during construction. Existing utilities and their location, as shown on the plans represent the best information obtainable for design and shall be field verified. The contractor will be required to work around existing utilities within the right-of-way which do not conflict with proposed construction.

4. Contractor shall furnish the inspector with a copy of the manufacturer's certification for any pipe used on this project after completion of pipe installation. The engineer will not certify the project to the city until pipe certification has been received.

5. All water lines and appurtenances shall be installed in accordance with the most recent edition of City of Wichita, Kansas Standard Specifications for the Construction of City Projects.

6. Rubble from the removal of miscellaneous structures and excess excavation which is to be wasted shall be disposed of on sites to be provided by the Contractor. These sites shall be approved by the Engineer as to suitability, appearance and site location. Locations that, in the opinion of the Engineer, will leave an unsightly appearance will not be approved. All disposal sites must be approved by the Kansas Department of Health and Environment. Material either stockpiled or disposed of in a flood plain would require a Kansas State Board of Agriculture permit. Any material dumped in waters of the United States or wetlands is subject to U.S. Corps. of Engineers permitting regulations. Any material buried or stockpiled beyond approved construction limits would require additional archaeological investigations unless buried in a previously approved borrow location.

7. Contractor shall not start work on the project until the project inspector is assigned to the project and is present on the site. Contractor shall not start on the project until all necessary bonds and permits have been obtained. Bonds may include but are not limited to Statutory, Performance & Maintenance. Any work done without inspection will be required to be uncovered for inspection.

APPROVED AS NOTED
BY CITY ENGINEER OF WICHITA,
BY WICHITA WATER & SEWER DEPARTMENT,
& BY WICHITA FIRE DEPARTMENT

Public Works *Julianne Kallman 8-6-12*

Water & Sewer *Ang Kalle 8-6-12*

Fire *Shannon 8-6-2012*

NOTE TO CONTRACTORS

Public Property:

Inspection and testing for the waterline is to be provided by a Licensed Consulting Engineering Firm under contract with the Owner/Developer. Said inspection to be in accordance with the City of Wichita standard construction engineering practices and certified by a Professional Engineer Licensed in the state of Kansas. No work shall be performed in dedicated easements or public right-of-way by the Contractor without such inspection nor shall any work be commenced without written authorization by the City Engineer. All Construction and Materials shall comply with the City or Wichita Specifications and Standards (on file and available in the City Engineer's Office).

Private Property:

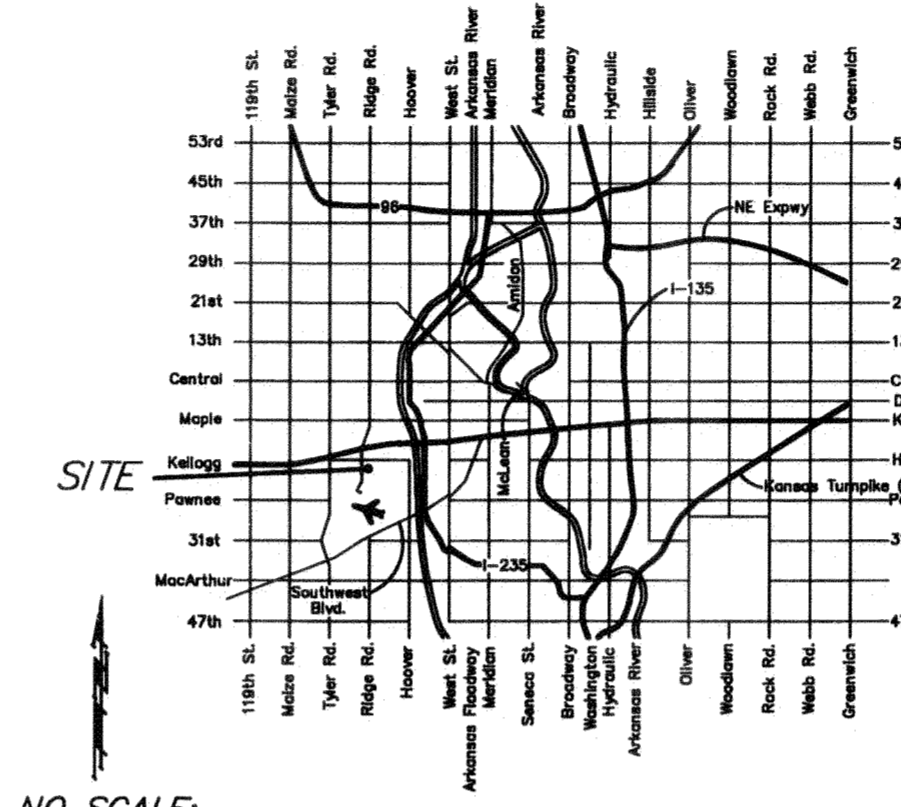
Installation and testing for the fire protection line is to be performed by a City of Wichita licensed fire protection contractor in accordance with the fire codes as adopted by the City of Wichita. All material and construction practices for the fire protection line shall comply with the fire codes as adopted by the City of Wichita (available from the City of Wichita Fire Department). The Contractor shall not commence work without notification and approval of the Wichita Fire Department. Inspection of the fire protection line is to be provided by a licensed Engineering Firm under contract with the Owner/Developer and the Fire Department. The contractor shall not start work until the project inspector is assigned to the project and present on the site. Any work done without inspection will be required to be uncovered for inspection.

AS BUILT PLANS

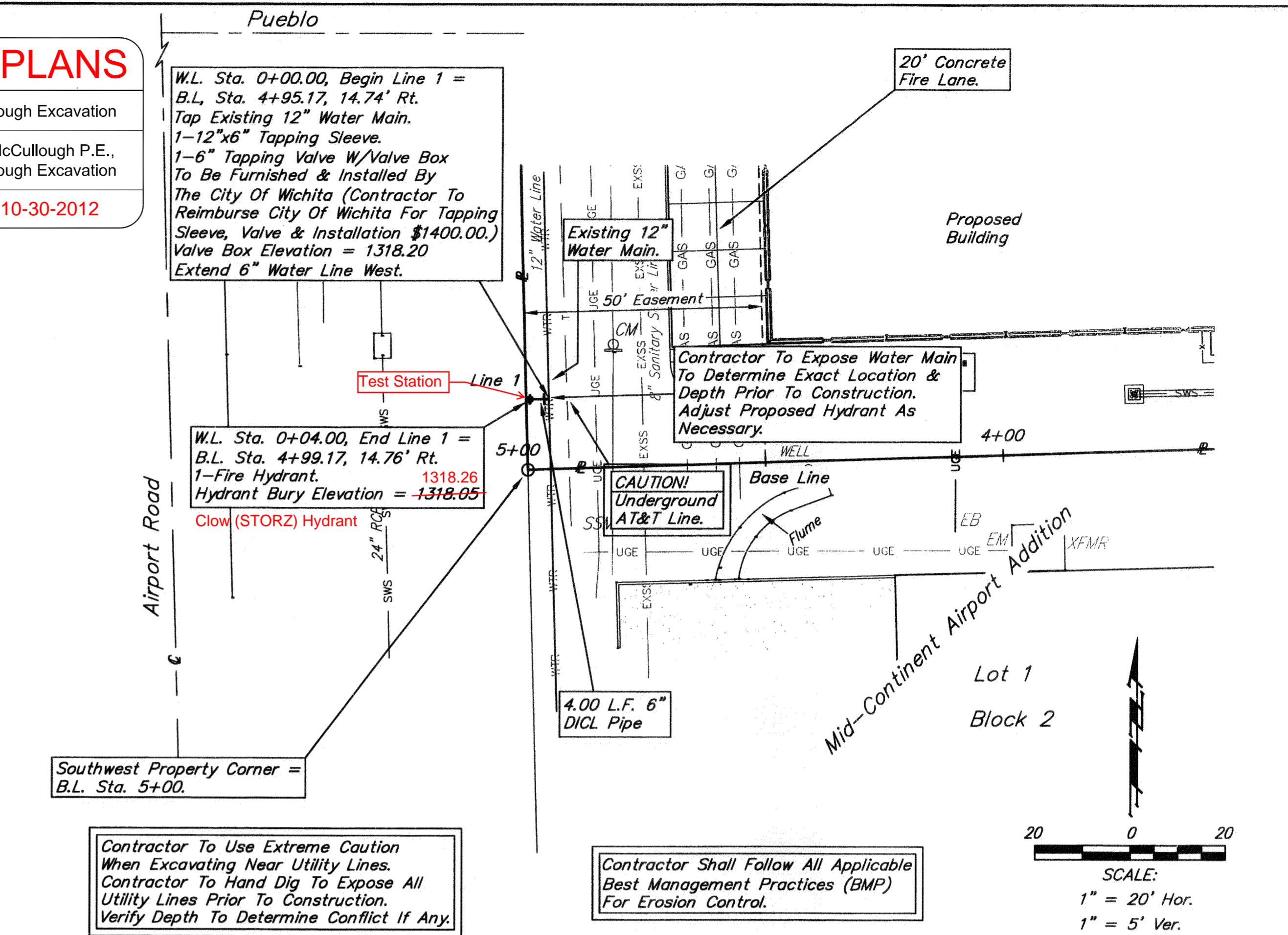
CONTRACTOR: McCullough Excavation

INSPECTOR: Ryan McCullough P.E.,
McCullough Excavation

PDF BY: RDM 10-30-2012

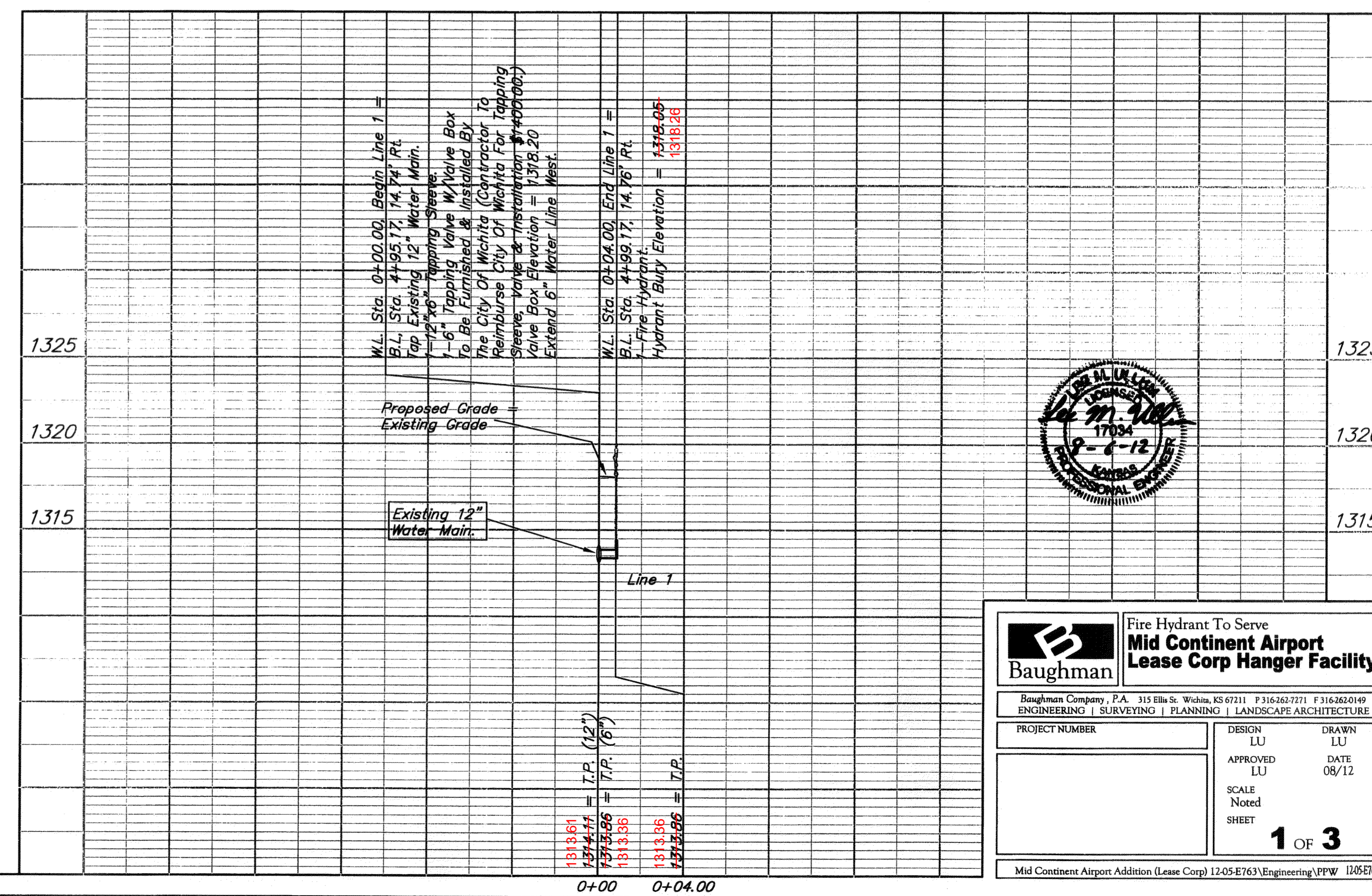
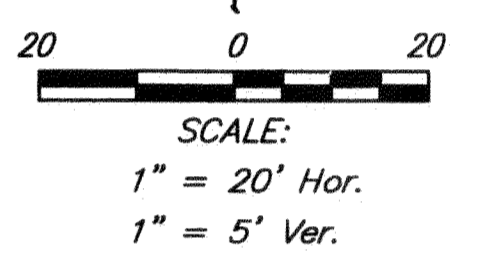


VICINITY MAP



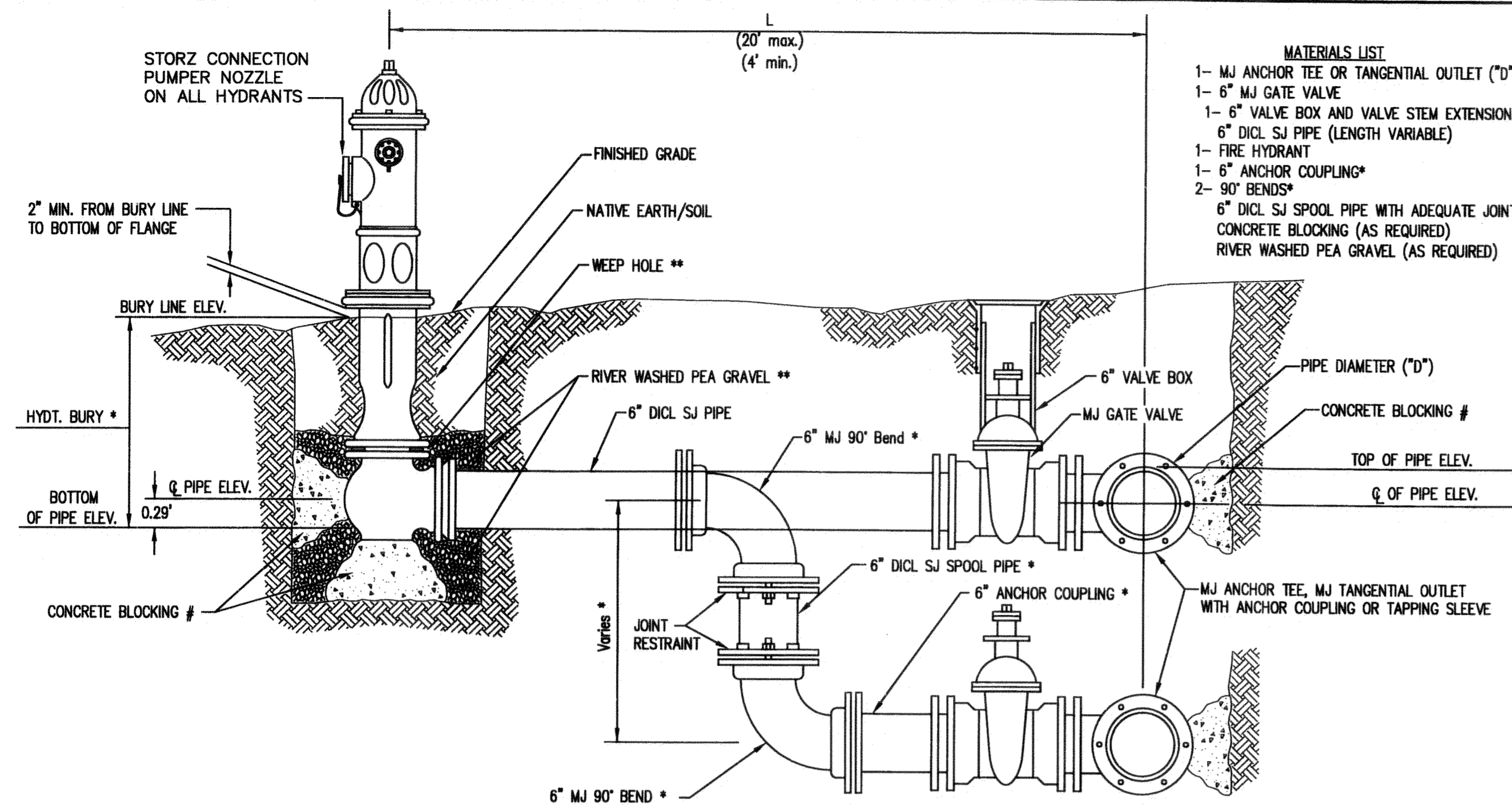
Contractor To Use Extreme Caution When Excavating Near Utility Lines. Contractor To Hand Dig To Expose All Utility Lines Prior To Construction. Verify Depth To Determine Conflict If Any.

Contractor Shall Follow All Applicable Best Management Practices (BMP) For Erosion Control.



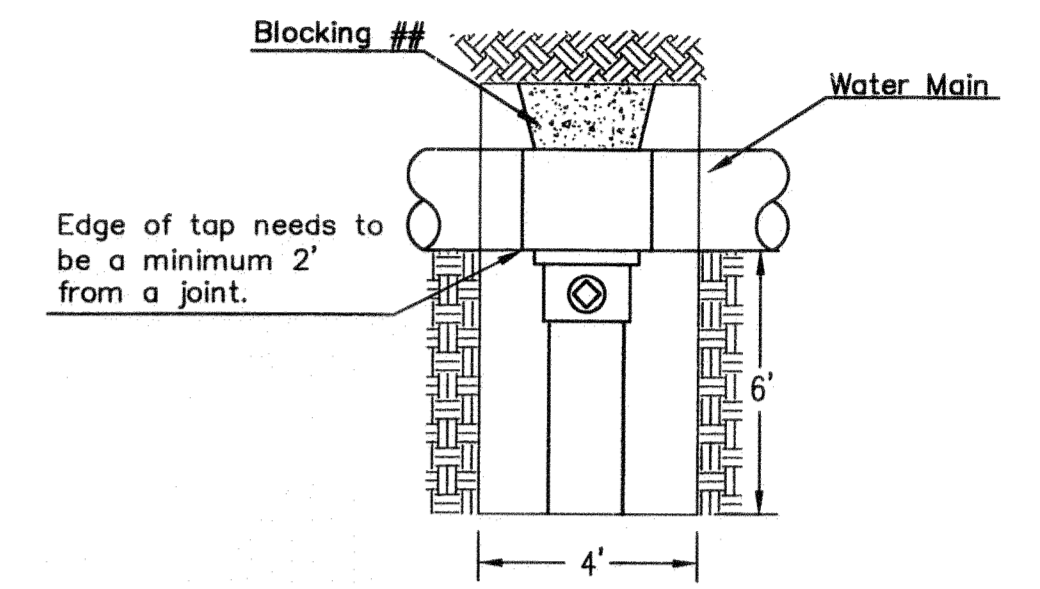
Baughman
Fire Hydrant To Serve
Mid Continent Airport
Lease Corp Hanger Facility

Baughman Company, P.A. 315 Ellis St. Wichita, KS 67211 F3162627271 F3162620149 ENGINEERING SURVEYING PLANNING LANDSCAPE ARCHITECTURE	
PROJECT NUMBER	DESIGN LU DRAWN LU
APPROVED LU DATE 08/12	NOTED LU
SCALE Noted	SHEET
1 OF 3	



- MATERIALS LIST**
- 1- MJ ANCHOR TEE OR TANGENTIAL OUTLET ("D" x 6")
 - 1- 6" MJ GATE VALVE
 - 1- 6" VALVE BOX AND VALVE STEM EXTENSION IF REQUIRED *
 - 6" DI CL SJ PIPE (LENGTH VARIABLE)
 - 1- FIRE HYDRANT
 - 1- 6" ANCHOR COUPLING*
 - 2- 90° BENDS*
 - 6" DI CL SJ SPOOL PIPE WITH ADEQUATE JOINT RESTRAINT *
 - CONCRETE BLOCKING (AS REQUIRED)
 - RIVER WASHED PEA GRAVEL (AS REQUIRED)

FIRE HYDRANTS REQUIRED				
STATION	BURY LINE ELEVATION	TOP OF PIPE ELEVATION	FIRE HYDRANT BURY REQUIRED*	VALVE STEM EXT. REQUIRED (ft)*
0+04.00, Line 1	1318.05	1313.86	5.0' 5.5'	none



CITY TAP

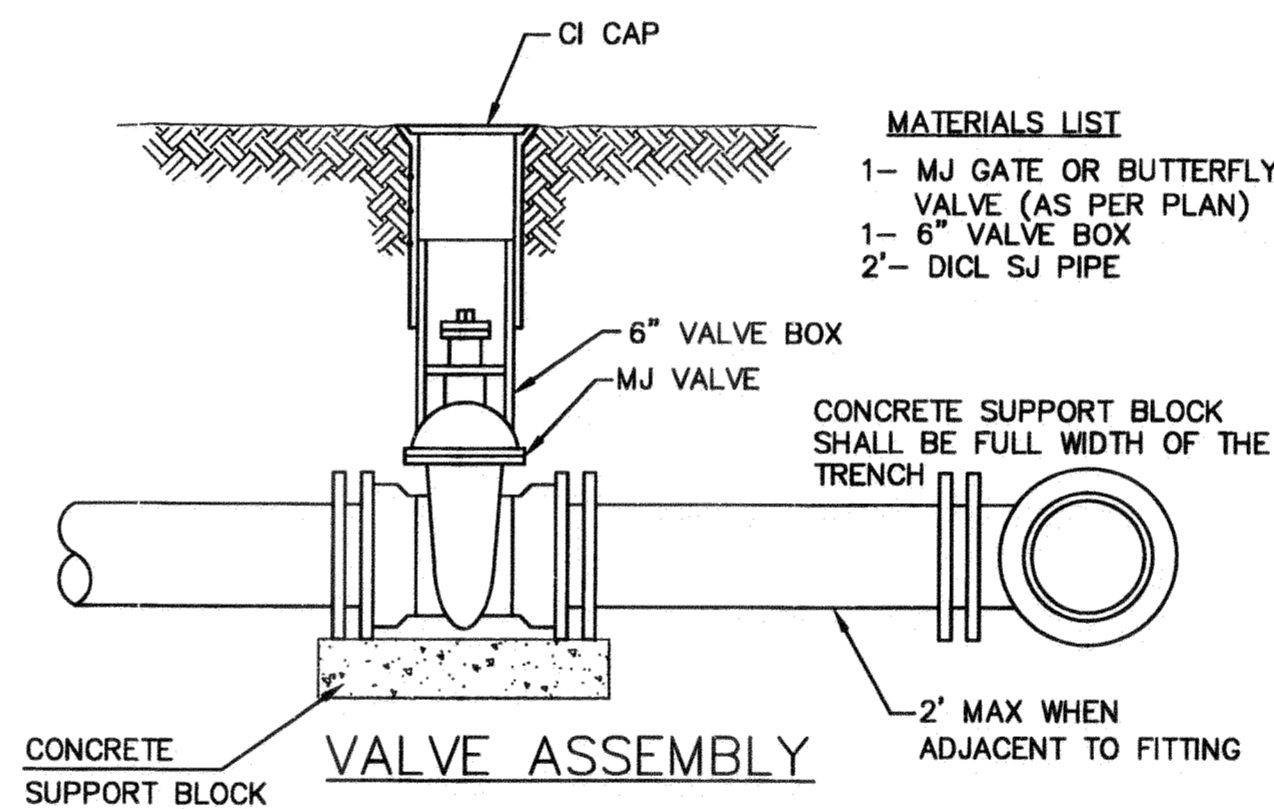
When the City of Wichita makes tap, blocking is to be done by Contractor

* IF THE REQUIRED HYDRANT BURY IS IN EXCESS OF 5', BUT LESS THAN 7', CONTRACTOR SHALL USE STANDARD 5' HYDRANT BURY AND HYDRANT BARREL EXTENSIONS AS NECESSARY. IF THE REQUIRED HYDRANT BURY IS GREATER THAN 7', CONTRACTOR SHALL USE 5' HYDRANT BURY, 2-MJ 90° BENDS, 6" ANCHOR COUPLING AND 6" DI CL SPOOL PIPE AS NECESSARY FOR VERTICAL ADJUSTMENT. THE CONTRACTOR SHALL PROVIDE ADEQUATE THRUST BLOCKING AT HYDRANT AND MEGALUGS, ROD AND LUG OR SIMILAR RESTRAINT BETWEEN 90° BENDS TO SECURE ALL FITTINGS DURING TESTING AND OPERATION. THE CONTRACTOR SHALL PROVIDE A VALVE STEM EXTENSION PER DETAIL THIS SHEET.

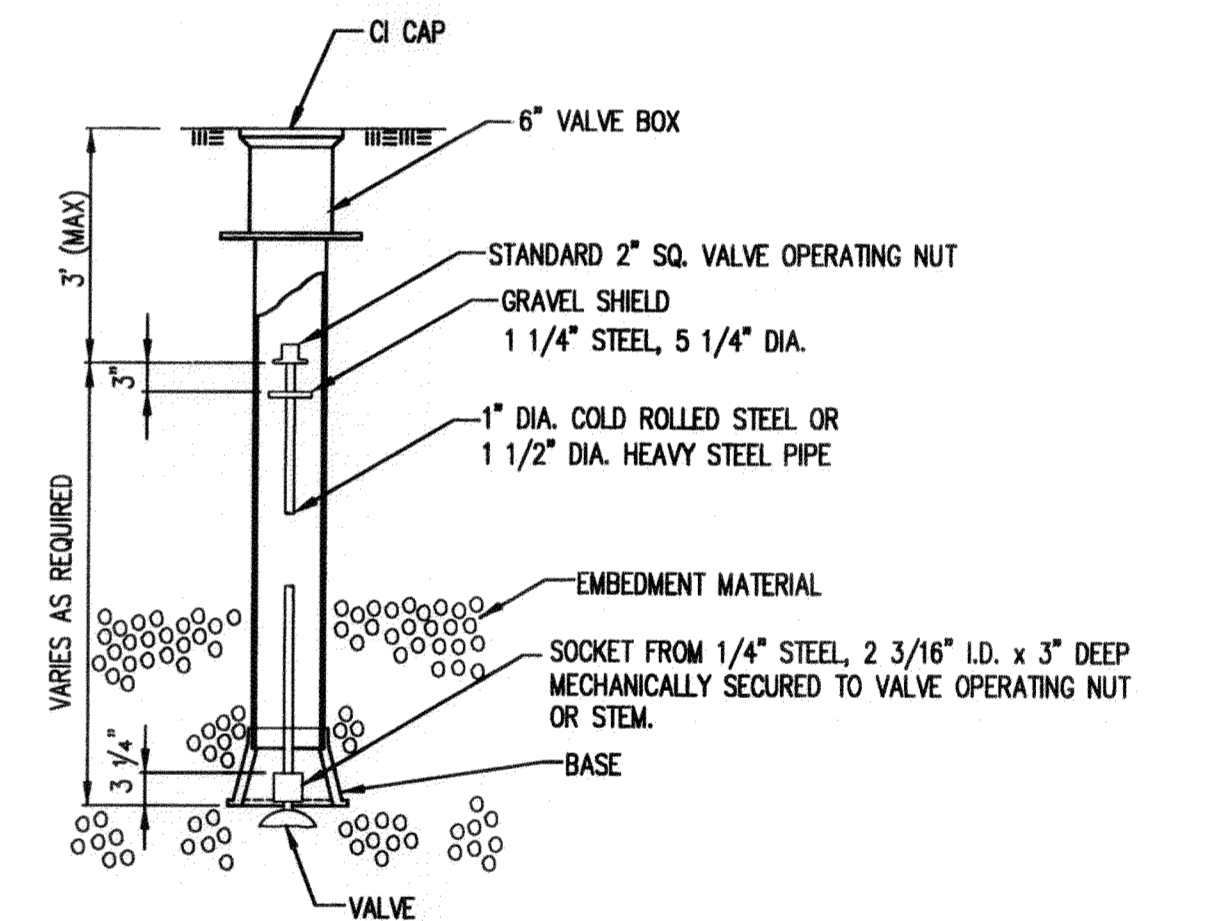
** CAUTION WEEP HOLES TO BE KEPT CLEAR DURING CONSTRUCTION AND BACKFILL. CONCRETE FOR THRUST BLOCKING SHALL NOT OBSTRUCT WEEP HOLES. PLACE 1 CUBIC FOOT OF RIVER WASHED PEA GRAVEL AROUND EACH WEEP HOLE.

CONCRETE THRUST BLOCKING SHALL BE KEPT CLEAR OF BOLTS, NUTS, AND MJ ACCESSORIES.

FIRE HYDRANT ASSEMBLY
PER CITY OF WICHITA SPECIFICATIONS

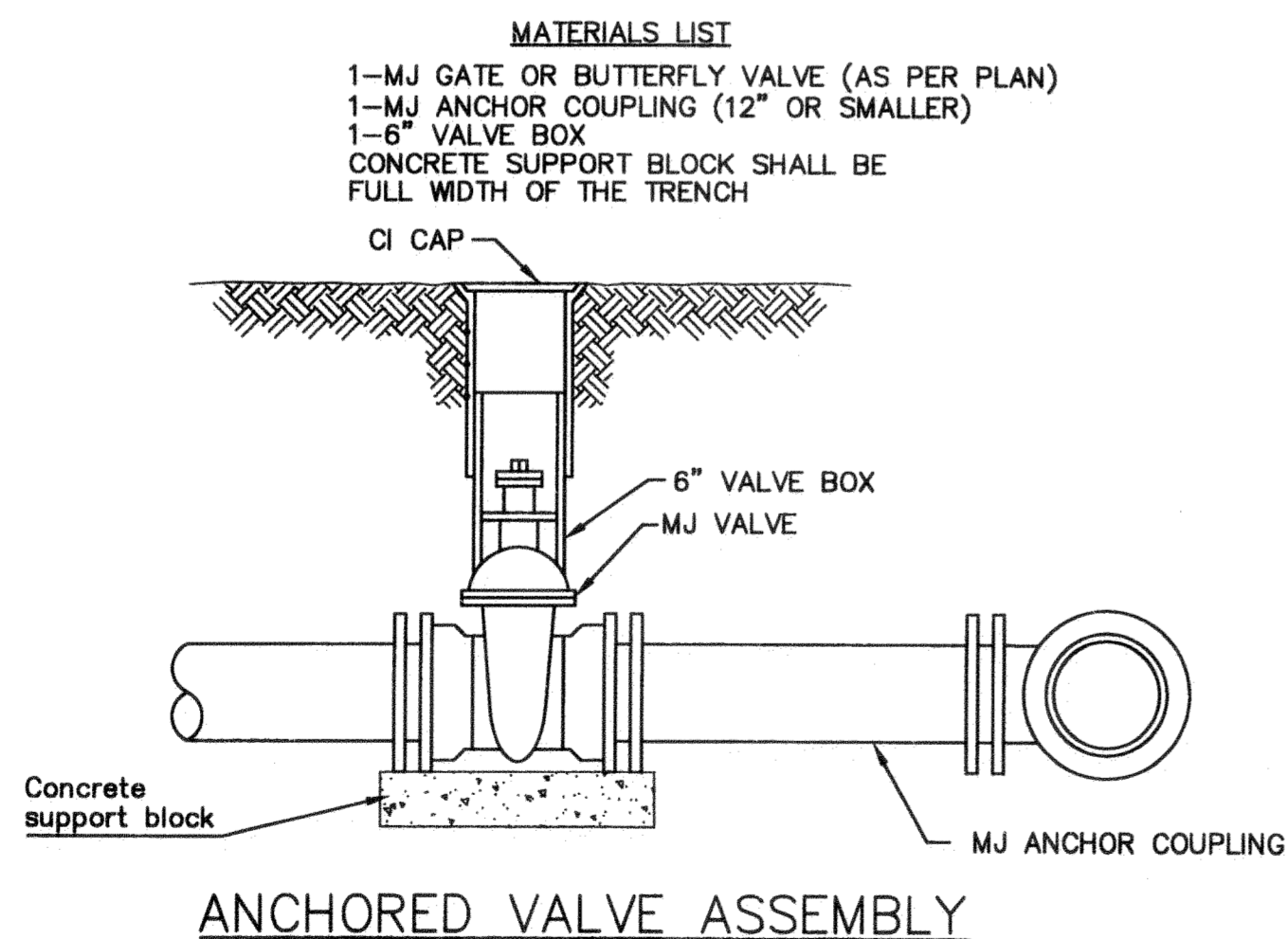


- MATERIALS LIST**
- 1- MJ GATE OR BUTTERFLY VALVE (AS PER PLAN)
 - 1- 6" VALVE BOX
 - 2'- DI CL SJ PIPE

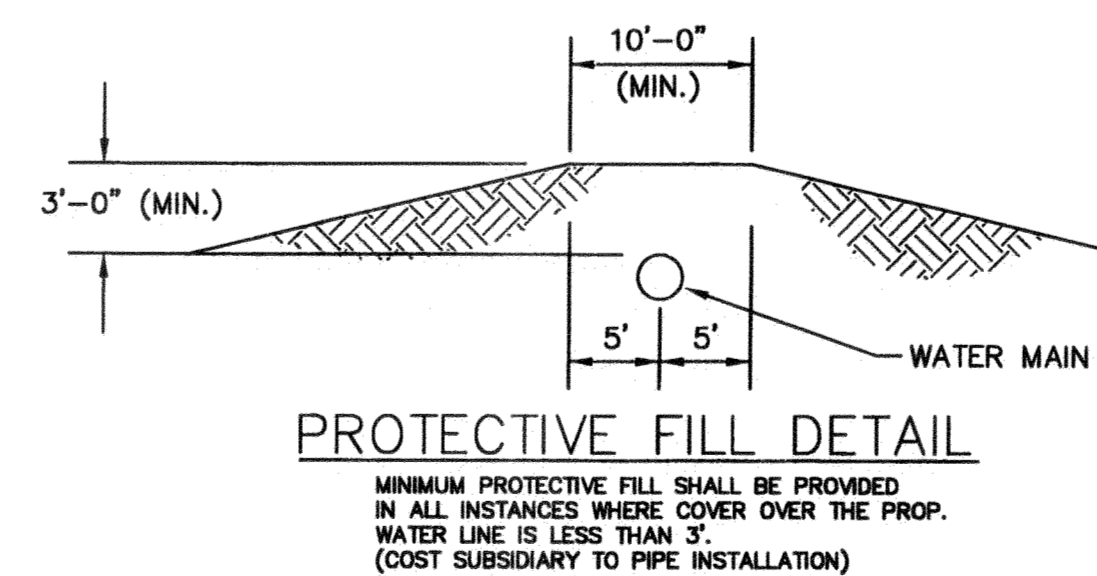



VALVE STEM EXTENSION DETAIL

NOTE: ONE VALVE STEM EXTENSION FOR EACH VALVE BURIED GREATER THAN 5'.



- MATERIALS LIST**
- 1- MJ GATE OR BUTTERFLY VALVE (AS PER PLAN)
 - 1- MJ ANCHOR COUPLING (12" OR SMALLER)
 - 1- 6" VALVE BOX
 - CONCRETE SUPPORT BLOCK SHALL BE FULL WIDTH OF THE TRENCH





CITY OF WICHITA
PUBLIC WORKS & UTILITIES
ENGINEERING DIVISION

STANDARD WATER ASSEMBLY DETAIL

CITY ENGINEER
Gary Janzen, P.E. Interim City Engineer

PROJECT NUMBER 1677 PPW	OCA NUMBER NA	DATE 08/12
----------------------------	------------------	---------------

CITY ENGINEER'S OFFICE
CITY HALL - SEVENTH FLOOR
455 NORTH MAIN STREET
WICHITA, KANSAS 67202-1620
(316) 268-4501

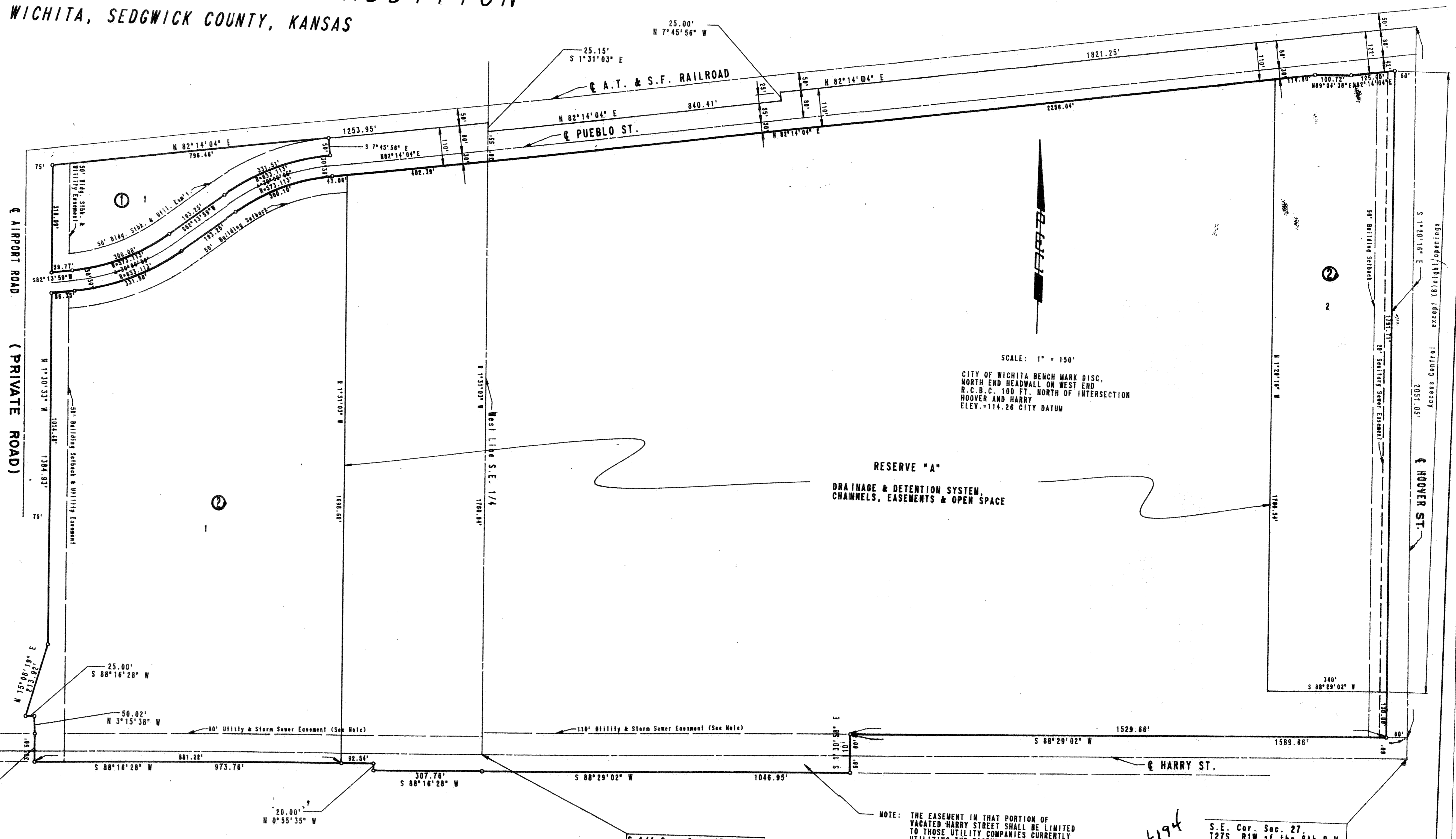
SHEET
2 of 3

WICHITA, SEDGWICK COUNTY, KANSAS

STATE OF KANSAS)
 COUNTY OF SEDGWICK) SS

I, R.W. LINN, A PROFESSIONAL ENGINEER IN AFORESAID STATE AND COUNTY, DO HEREBY CERTIFY THAT ON THIS 23rd DAY OF October, 1966, HAVE CAUSED TO BE SURVEYED AND PLATTED, MID-CONTINENT AIRPORT ADDITION, WICHITA, SEDGWICK COUNTY, KANSAS, INTO LOTS, BLOCKS, STREETS AND A RESERVE, THE SAME BEING A REPLAT OF RESERVES A, B AND PART OF RESERVE C, ALSO, BLOCKS 1 & 2 WITH INCLUDED STREETS WITH BLOCKS D, E, F, G, H, & J, PLUS INCLUDED STREETS PUEBLO DRIVE, MONTEZUMA ROAD, SIERRA DRIVE, SIEGER DRIVE, CORTEZ ROAD AND POLO ALTO DRIVE, ALL IN ROLLING HILLS MESA ADDITION, SEDGWICK COUNTY, KANSAS, AND MORE PARTICULARLY DESCRIBED AS A TRACT OF LAND IN THE S 1/2 OF SECTION 27 AND PORTION OF THE NORTH 30.00 FEET OF SECTION 34, TOWNSHIP 27 SOUTH, RANGE 1 WEST OF THE 6TH P.M. AND BEGINNING AT A POINT IN THE EAST LINE AND 60.00 FEET NORTH OF THE SE CORNER OF THE SE 1/4 OF SAID SECTION 27; THENCE BEARING S88°29'02"W PARALLEL WITH AND 60.00 FEET NORTH OF THE SOUTH LINE OF SAID SE 1/4 A DISTANCE OF 1589.66 FEET; THENCE BEARING S1°30'50"E A DISTANCE OF 110.00 FEET; THENCE BEARING S88°16'28"W PARALLEL WITH AND 50 FEET SOUTH OF THE SOUTH LINE OF THE SE 1/4 OF SAID SECTION 27; A DISTANCE OF 1046.95 FEET; THENCE BEARING S88°16'28"W PARALLEL WITH AND 50 FEET SOUTH OF THE SOUTH LINE SW 1/4 OF SECTION 27; A DISTANCE OF 307.76 FEET; THENCE BEARING S8°29'02"W PARALLEL TO AND 30.00 FEET SOUTH OF THE SOUTH LINE SW 1/4 OF SECTION 27; A DISTANCE OF 973.76 FEET; THENCE BEARING N1°43'32"W A DISTANCE OF 80.00 FEET TO THE SE CORNER OF LOT 14 BLOCK "C", ROLLING HILLS MESA ADDITION; THENCE BEARING S3°15'38"W A DISTANCE OF 50.02 FEET TO THE NE CORNER OF SAID LOT 14; THENCE BEARING S88°16'28"W A DISTANCE OF 25.00 FEET TO THE NW CORNER OF SAID LOT 14; THENCE BEARING N15°08'19"E ALONG THE EASTERLY LINE OF SAID LOT 14; THENCE BEARING N15°08'19"E ALONG THE EASTERLY LINE OF LOT 7 IN SAID BLOCK "C"; A DISTANCE OF 213.92 FEET; THENCE BEARING N1°30'33"W ALONG THE EAST LINE OF SAID LOT 7; A DISTANCE OF 1384.93 FEET TO A POINT IN THE SOUTH RIGHT-OF-WAY LINE OF A.T. & S.F. RAILROAD; THENCE BEARING N82°14'04"E ALONG SAID SOUTH RIGHT-OF-WAY A DISTANCE OF 1253.95 FEET TO A POINT IN THE WEST LINE OF THE SE 1/4 OF SAID SECTION 27; THENCE BEARING S1°31'03"E ALONG SAID WEST LINE A DISTANCE OF 25.15 FEET; THENCE BEARING N82°14'04"E ALONG SAID SOUTH RIGHT-OF-WAY A DISTANCE OF 840.41 FEET; THENCE BEARING N7°45'56"W A DISTANCE OF 25.00 FEET; THENCE BEARING N82°14'04"E ALONG SAID SOUTH RIGHT-OF-WAY A DISTANCE OF 1821.25 FEET TO A POINT IN THE EAST LINE SE 1/4 OF SAID SECTION 27; THENCE BEARING S1°20'18"E A DISTANCE OF 2051.05 TO THE POINT OF BEGINNING.

R.W. LINN P.E. NO. 3684



SCALE: 1" = 150'

CITY OF WICHITA BENCH MARK DISC,
 NORTH END HEADWALL ON WEST END
 R.C.B.C. 100 FT. NORTH OF INTERSECTION
 HOOVER AND HARRY
 ELEV. = 114.26 CITY DATUM

RESERVE "A"
 DRAINAGE & DETENTION SYSTEM,
 CHANNELS, EASEMENTS & OPEN SPACE

NOTE: THE EASEMENT IN THAT PORTION OF VACATED HARRY STREET SHALL BE LIMITED TO THOSE UTILITY COMPANIES CURRENTLY UTILIZING THE EASEMENT. THOSE COMPANIES BEING:
 K.P. & L. GAS SERVICE
 SOUTHWESTERN BELL TELEPHONE CO.
 CITY OF WICHITA

KNOW ALL MEN BY THESE PRESENTS THAT WE, THE UNDERSIGNED PROPERTY OWNERS OF THE LAND AS ABOVE SET FORTH IN THE ENGINEER'S CERTIFICATE, HAVE CAUSED THE LAND TO BE SURVEYED AND PLATTED INTO LOTS, BLOCKS, STREETS AND A RESERVE, THE SAME BEING KNOWN AS MID-CONTINENT AIRPORT ADDITION, WICHITA, SEDGWICK COUNTY, KANSAS. EASEMENTS AS INDICATED FOR THE CONSTRUCTION AND MAINTENANCE OF PUBLIC UTILITIES AND DRAINAGE ARE HEREBY GRANTED. STREETS ARE HEREBY DEDICATED TO AND FOR THE USE OF THE PUBLIC. RESERVE A SHALL BE OWNED AND MAINTAINED BY THE WICHITA AIRPORT AUTHORITY AND SHALL BE RESERVED FOR DRAINAGE AND DETENTION SYSTEM CHANNELS, EASEMENTS AND OPEN SPACE. MINIMUM PAD ELEVATION REQUIRED FOR ALL LOTS SHALL BE 1304 M.S.L. (116.6 CITY DATUM). ALL ADJUTERS' RIGHTS OF ACCESS TO AND FROM HOOVER ROAD OVER AND ACROSS THE EAST LINE OF LOT 2 THAT LOT 2 SHALL HAVE ACCESS TO HOOVER ROAD AT EIGHT (8) LOCATIONS, HOWEVER, SAID LOCATION TO BE DETERMINED BY THE CITY ENGINEER OF THE CITY OF WICHITA, KANSAS ALL PORTIONS OF WICHITA MUNICIPAL AIRPORT ADDITION AND ROLLING HILLS MESA ADDITION WITHIN THE ABOVE DESCRIBED ARE HEREBY VACATED AND REPLATTED BY VIRTUE OF K.S.A. 12-512(b) AMENDED. OWNER: THE WICHITA AIRPORT AUTHORITY

Milton Glickman PRESIDENT
 Ludwig Mohring CLERK

THIS PLAT HAS BEEN SUBMITTED TO AND APPROVED BY THE WICHITA-SEDGWICK COUNTY METROPOLITAN AREA PLANNING COMMISSION, WICHITA, KANSAS, DATED THIS 15th DAY OF September, 1966.

DAVID BAYBOTH VICE-CHAIRMAN
 MICHAEL E. LINDEBAK SECRETARY

THIS PLAT APPROVED AND ALL DEDICATIONS SHOWN HEREON ARE ACCEPTED BY THE CITY COMMISSION OF THE CITY OF WICHITA, KANSAS. DATED THIS 12th DAY OF October, 1966.
 TOM CASADO MAYOR
 DONALD C. GUSTICK CITY CLERK

ENTERED ON TRANSFER RECORD, THIS 23rd DAY OF October, 1966.

ROBERT D. MILLER COUNTY CLERK
 DON WRIGHT Chief Deputy

THIS IS TO CERTIFY THAT THIS INSTRUMENT WAS FILED FOR RECORD IN THE REGISTER OF DEED'S OFFICE AT 9:00 A.M., ON THIS 23RD DAY OF OCTOBER, 1966.

PAT KETTLER REGISTER OF DEEDS
 ED RESA ED RESA

