

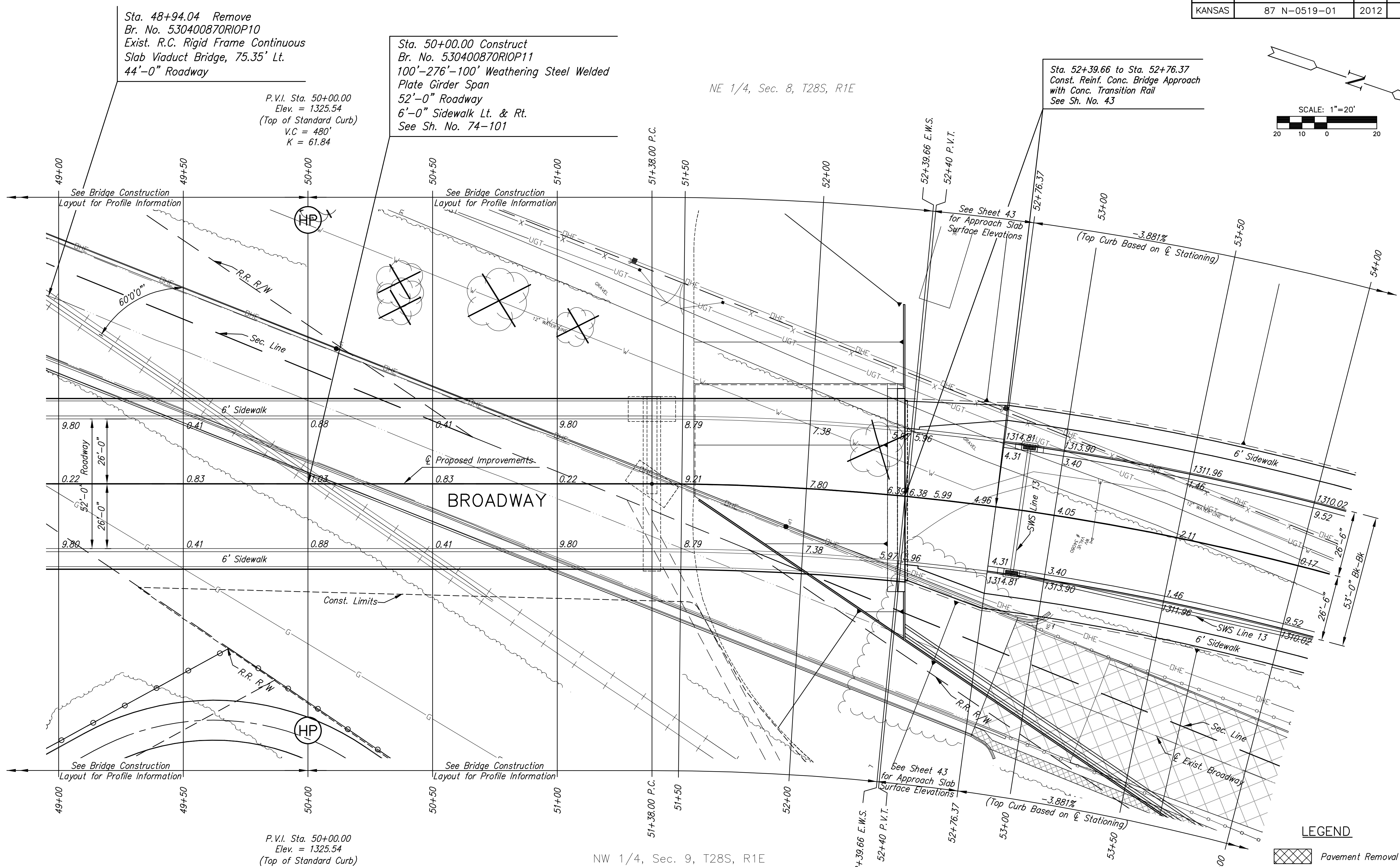
# BROADWAY BRIDGE AT 34TH STREET SOUTH

**PAVING PLAN  
STA.49+00  
TO  
STA.54+00**  
SHEET TITLE  
472-84830  
PROJECT NUMBER

JRA  
DESIGN BY  
DPC  
DRAWN BY  
JRA  
CHECKED BY

ISSUED  
October 9, 2012  
REVISED

SHEET NO.  
**9 of 212**



Sta. 48+94.04 Remove  
Br. No. 530400870R10P10  
Exist. R.C. Rigid Frame Continuous  
Slab Viaduct Bridge, 75.35' Lt.  
44'-0" Roadway

Sta. 50+00.00 Construct  
Br. No. 530400870R10P11  
100'-276'-100' Weathering Steel Welded  
Plate Girder Span  
52'-0" Roadway  
6'-0" Sidewalk Lt. & Rt.  
See Sh. No. 74-101

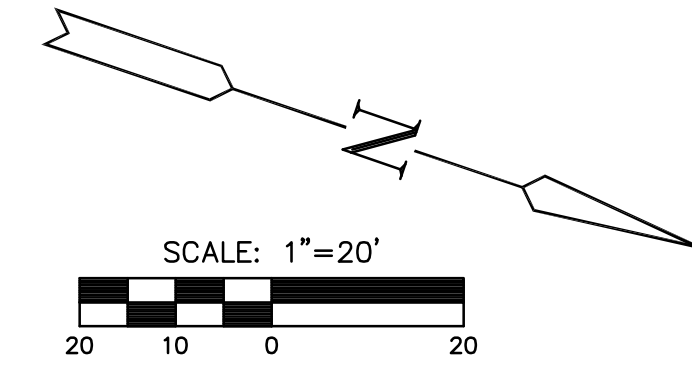
Sta. 52+39.66 to Sta. 52+76.37  
Const. Reinf. Conc. Bridge Approach  
with Conc. Transition Rail  
See Sh. No. 43

P.V.I. Sta. 50+00.00  
Elev. = 1325.54  
(Top of Standard Curb)  
V.C. = 480'  
K = 61.84

P.V.I. Sta. 50+00.00  
Elev. = 1325.54  
(Top of Standard Curb)  
V.C. = 480'  
K = 61.84

NE 1/4, Sec. 8, T28S, R1E

NW 1/4, Sec. 9, T28S, R1E



UTILITY ADJUSTMENTS				
STATION	OFFSET	EXISTING ELEVATION	PROPOSED ELEVATION	REMARKS
N/A	N/A	N/A	N/A	

**CURVE DATA**  
Curve #3  
P.I. Sta. 55+04.03 (Bk.)=  
P.I. Sta. 54+75.87 (Ahd.)  
Δ=38°46'47" Rt.  
T = 366.03'  
R = 1,040.00'  
L = 703.90'  
E = 62.53'  
Normal Crown

- LEGEND**
- Pavement Removal
  - Driveway, sidewalk and parking lot removal
  - Asphalt Hookup
  - Construct Wheelchair Ramp See Sh. No.
  - Existing Structure
  - XXXXXXXXXX SWS Removal

PLOTED: Thursday, October 11, 2012 @ 10:26AM

J:\Civil\09081\dwg\pav\09081-E4