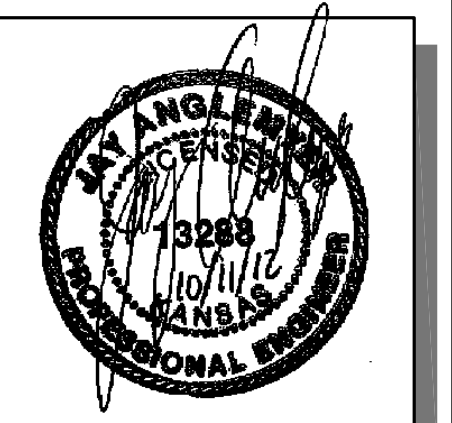


STATE	PROJECT NO.	YEAR	SHEET NO.	TOTAL SHEETS
KANSAS	87 N-0519-01	2012	10	212

**MKEC**  
ENGINEERING  
CONSULTANTS, INC.  
411 N. WEBB ROAD  
WICHITA, K.S. 67206  
316-684-9600



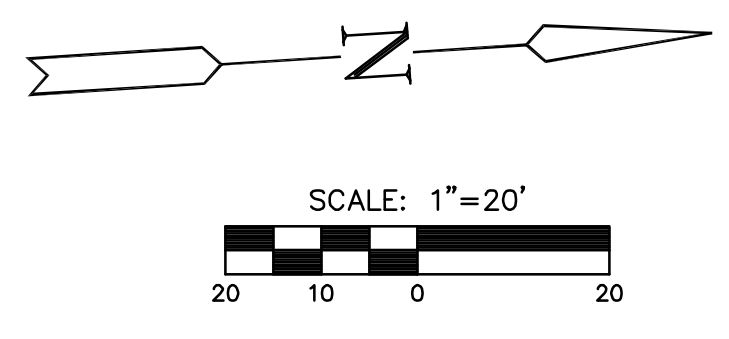
# BROADWAY BRIDGE AT 34TH STREET SOUTH

**PAVING PLAN**  
STA. 54+00  
TO  
STA. 59+50  
SHEET TITLE  
472-84830  
PROJECT NUMBER

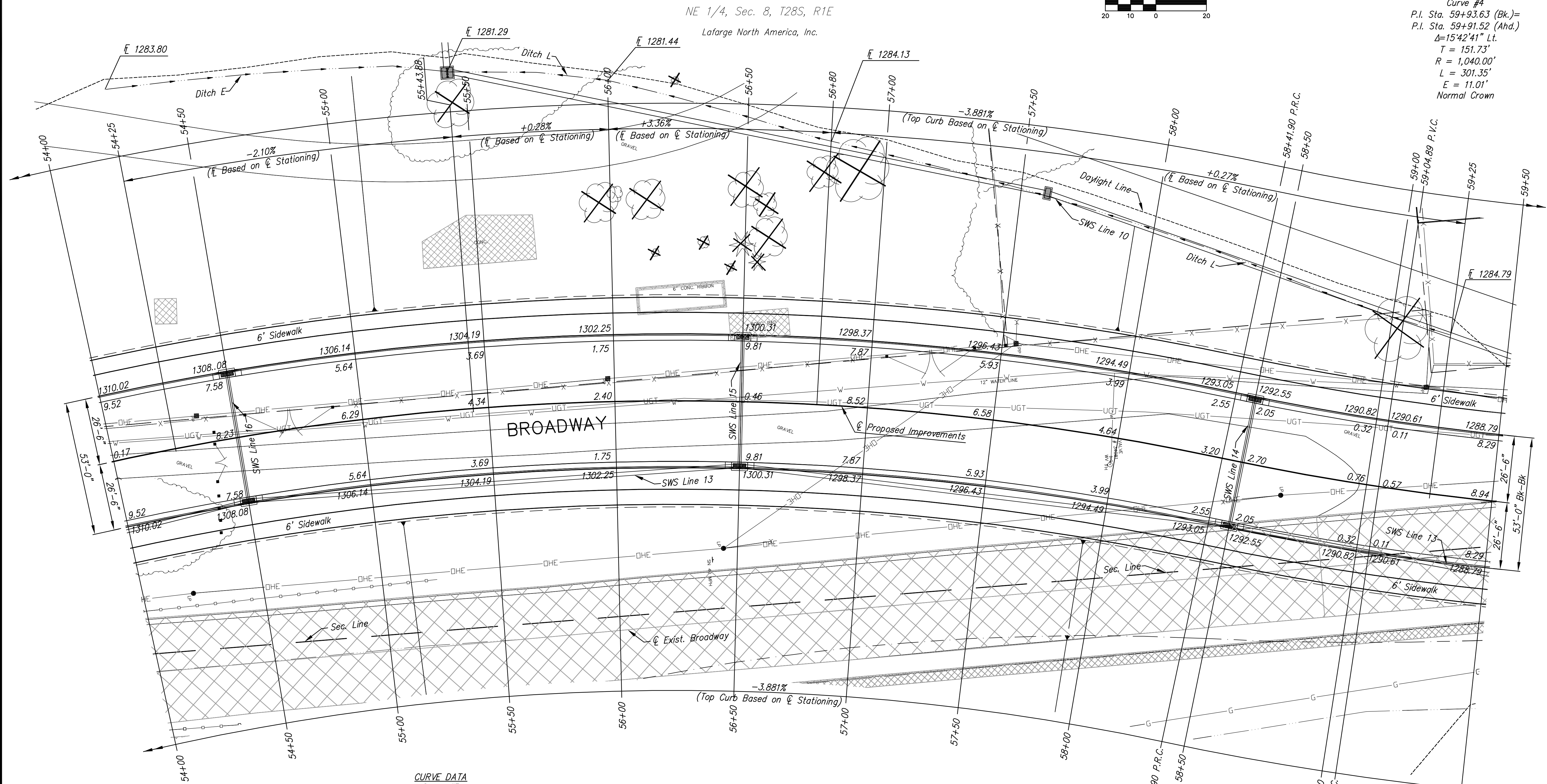
DESIGN BY: JRA  
DRAWN BY: DPG  
CHECKED BY: JRA

ISSUED: October 9, 2012  
REVISED:

SHEET NO.  
10 of 212



**CURVE DATA**  
Curve #4  
P.I. Sta. 59+93.63 (Bk.)=  
P.I. Sta. 59+91.52 (Ahd.)=  
 $\Delta = 15^\circ 42' 41''$  Lt.  
 $T = 151.73'$   
 $R = 1,040.00'$   
 $L = 301.35'$   
 $E = 11.01'$   
Normal Crown



**CURVE DATA**  
Curve #3  
P.I. Sta. 55+04.03 (Bk.)=  
P.I. Sta. 54+75.87 (Ahd.)=  
 $\Delta = 38^\circ 46' 47''$  Rt.  
 $T = 366.03'$   
 $R = 1,040.00'$   
 $L = 703.90'$   
 $E = 62.53'$   
Normal Crown

Kansas Dept. Of Transportation  
NW 1/4, Sec. 9, T28S, R1E

UTILITY ADJUSTMENTS				
STATION	OFFSET	EXISTING ELEVATION	PROPOSED ELEVATION	REMARKS
N/A	N/A	N/A	N/A	

- LEGEND**
- Pavement Removal
  - Driveway, sidewalk and parking lot removal
  - Asphalt Hookup
  - Construct Wheelchair Ramp See Sh. No.
  - Existing Structure

PLOTTED: Thursday, October 11, 2012 @ 10:27 AM

J:\Civil\09081.dwg\pav\09081-E5