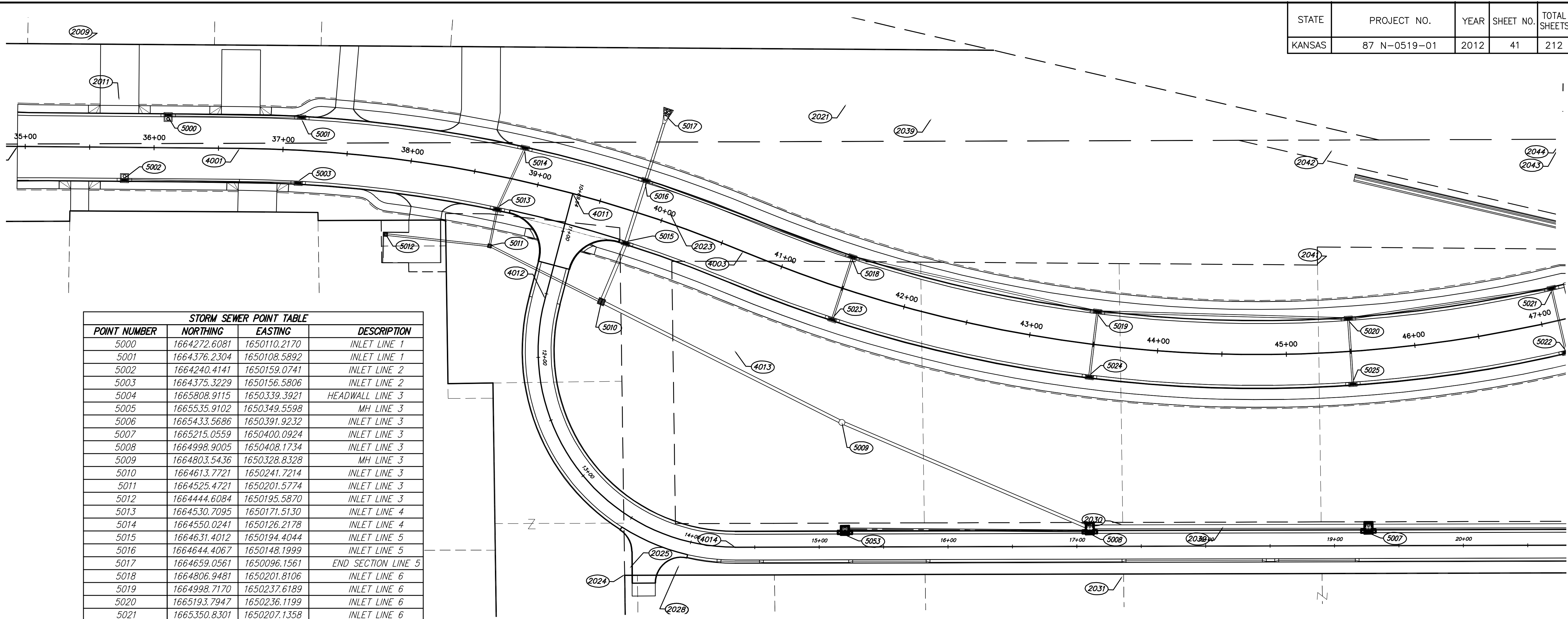


STATE	PROJECT NO.	YEAR	SHEET NO.	TOTAL SHEETS
KANSAS	87 N-0519-01	2012	41	212

**MKEC**  
ENGINEERING  
CONSULTANTS, INC.  
411 N. WEBB ROAD  
WICHITA, K.S. 67206  
316-684-9600



# BROADWAY BRIDGE AT 34TH STREET SOUTH



STORM SEWER POINT TABLE			
POINT NUMBER	NORTHING	EASTING	DESCRIPTION
5000	1664272.6081	1650110.2170	INLET LINE 1
5001	1664376.2304	1650108.5892	INLET LINE 1
5002	1664240.4141	1650159.0741	INLET LINE 2
5003	1664375.3229	1650156.5806	INLET LINE 2
5004	1665808.9115	1650339.3921	HEADWALL LINE 3
5005	1665535.9102	1650349.5598	MH LINE 3
5006	1665433.5686	1650391.9232	INLET LINE 3
5007	1665215.0559	1650400.0924	INLET LINE 3
5008	1664998.9005	1650408.1734	INLET LINE 3
5009	1664803.5436	1650328.8328	MH LINE 3
5010	1664613.7721	1650241.7214	INLET LINE 3
5011	1664525.4721	1650201.5774	INLET LINE 3
5012	1664444.6084	1650195.5870	INLET LINE 3
5013	1664530.7095	1650171.5130	INLET LINE 4
5014	1664550.0241	1650126.2178	INLET LINE 4
5015	1664631.4012	1650194.4044	INLET LINE 5
5016	1664644.4067	1650148.1999	INLET LINE 5
5017	1664659.0561	1650096.1561	END SECTION LINE 5
5018	1664806.9481	1650201.8106	INLET LINE 6
5019	1664998.7170	1650237.6189	INLET LINE 6
5020	1665193.7947	1650236.1199	INLET LINE 6
5021	1665350.8301	1650207.1358	INLET LINE 6
5022	1665363.2249	1650253.5078	INLET LINE 6
5023	1664793.6477	1650247.9311	INLET LINE 7
5024	1664994.4763	1650285.4335	INLET LINE 8
5025	1665198.7705	1650283.8613	INLET LINE 9
5026	1665832.2805	1649733.6764	HEADWALL LINE 10
5027	1665832.8952	1649770.3312	MH LINE 10
5028	1666142.1594	1649765.1448	MH LINE 10
5029	1666142.9241	1649810.8772	INLET LINE 10
5030	1666143.6933	1649856.6102	INLET LINE 10
5031	1666377.7425	1649919.3176	INLET LINE 10
5032	1666627.3657	1650025.4725	MH LINE 10
5033	1666643.7116	1650032.4336	SEPARATOR LINE 10
5034	1666653.3954	1650040.6191	INLET LINE 10
5035	1666751.2195	1650042.4576	INLET LINE 10
5036	1666752.0244	1650090.4508	INLET LINE 10
5037	1665577.2388	1649774.6187	MH LINE 11
5038	1665578.0057	1649820.3473	END SECTION LINE 11
5039	1666163.3901	1649772.9815	END SECTION LINE 12
5040	1665884.8775	1650001.8971	INLET LINE 13
5041	1665897.2722	1650048.2692	INLET LINE 13
5042	1666054.3079	1650019.2850	INLET LINE 13
5043	1666249.3861	1650017.7838	INLET LINE 13
5044	1666441.5313	1650053.6344	INLET LINE 13
5045	1666547.2865	1650082.1918	MH LINE 13
5046	1666650.2291	1650088.5146	INLET LINE 13
5047	1666049.3321	1649971.5436	INLET LINE 14
5048	1666253.6258	1649969.9714	INLET LINE 15
5049	1666454.1122	1650007.3125	INLET LINE 16
5050	1666920.9866	1650038.1078	INLET LINE 17
5051	1666895.3925	1650037.6716	INLET LINE 17
5052	1666896.2837	1650089.6165	INLET LINE 17
5053	1664808.9667	1650415.9441	INLET LINE 3A

BASELINE POINT TABLE			
POINT NUMBER	NORTHING	EASTING	DESCRIPTION
4000	1663995.2916	1650141.4669	BL
4001	1664328.9660	1650132.7535	BL PC
4002	1664356.1150	1651172.3990	BL RP
4003	1664722.2942	1650198.9963	BL RCC
4004	1665497.1527	1650181.9311	BL PT
4005	1665750.9499	1650073.4739	BL PC
4006	1666159.6292	1651029.8113	BL RP
4007	1666440.0181	1650028.3214	BL RCC
4008	1666737.8457	1650066.6852	BL PT
4009	1667076.1953	1650061.0110	BL
4010	1664156.4789	1650137.2577	BL
4011	1664588.6170	1650158.7192	37TH BL
4012	1664569.6247	1650242.2602	37TH BL PC
4013	1664718.3303	1650276.0671	37TH BL RP
4014	1664724.0288	1650428.4606	37TH BL PT
4015	1665448.8324	1650401.3576	37TH BL PC
4019	1665279.2553	1649971.7806	PR RD BL
4020	1665289.0511	1649973.7911	PR RD BL PC
4021	1665309.1556	1649875.8329	PR RD BL RP
4022	1665398.2202	1649921.3026	PR RD BL PT
4023	1665432.0140	1649855.1084	PR RD BL PC
4024	1665521.0786	1649900.5781	PR RD BL RP
4025	1665519.4018	1649800.5921	PR RD BL PT
4026	1666286.5534	1649787.7267	PR RD BL PC
4027	1666285.7150	1649737.7338	PR RD BL RP
4028	1666335.7120	1649737.1860	PR RD BL PT
4029	1666335.6025	1649727.1866	PR RD BL RP
4030	1665088.4734	1649225.5936	BL RP
4031	1666720.4070	1649026.8314	BL RP

CONTROL POINT TABLE			
POINT NUMBER	NORTHING	EASTING	DESCRIPTION
2000	1663590.9002	1650189.0920	MKEC CP 2
2001	1663708.9044	1650094.0406	PKN
2003	1663796.7849	1650430.2510	PKN
2004	1663854.0118	1650092.0704	PKN
2005	1663925.5904	1650052.6557	PKN
2009	1664207.7053	1650052.9967	BM 9
2011	1664234.1273	1650098.7407	MKEC CP1
2012	1664372.5840	1649842.0704	PKN
2013	1664343.8406	1650246.3389	PKN
2018	1664544.1365	1650556.3136	1/2" BAR
2021	1664798.2251	1650082.1592	MKEC CP4
2023	1664664.0290	1650170.5328	BM 8
2024	1664639.3760	1650452.5881	1/2" PIPE
2025	1664642.8665	1650447.5630	MKEC CP7
2028	1664681.1271	1650443.9326	BM 13
2030	1665023.5152	1650400.4574	1/2" PIPE
2031	1665025.3703	1650440.4597	PINCH PIPE
2032	1665102.3416	1650399.1872	MKEC CP6
2034	1665356.6521	1650418.5096	BM 14
2037	1665539.4350	1650471.5374	5/8" ACLS
2039	1664864.8001	1650090.9282	BM 7
2041	1665167.4204	1650193.9046	PINCH PIPE
2043	1665351.8516	1650096.9310	SPIKE
2044	1665354.8789	1650089.8781	DISC
2047	1665353.1627	1650020.9108	5/8" MKEC
2048	1665333.7694	1649996.3389	MKEC CP
2051	1665393.2084	1650015.8827	MKEC CP11
2058	1665546.1109	1650001.1795	BM 5
2060	1665533.4612	1650091.2385	SPIKE
2061	1665540.9482	1650185.0455	5/8" ACLS
2067	1665825.4163	1649779.2413	NAIL

CONTROL POINT TABLE			
POINT NUMBER	NORTHING	EASTING	DESCRIPTION
2068	1665739.2610	1649997.8521	MKEC CP
2069	1665783.9334	1649962.0448	MKEC CP8
2071	1666011.1837	1650277.1326	1.5" PIPE
2072	1666074.2581	1650185.4511	MKEC CP
2073	1666126.0045	1650508.1903	MKEC CP10
2077	1666124.8393	1649985.6666	BM 4
2078	1666128.9847	1649954.0233	MKEC CP
2079	1666560.1565	1650494.8687	MKEC CP9
2081	1666285.9136	1650050.9054	MKEC CP3
2082	1666647.8771	1650109.7125	MKEC CP
2083	1666690.6222	1650165.2492	BM 3
2084	1667048.0750	1650009.5100	MKEC CP5
2085	1667282.6482	1650091.8154	BM 2
2086	1668056.3080	1649993.2970	BM 1

PLOTED: Thursday, October 11, 2012 @ 10:36AM

J:\Civil\09081\dwg\Control-Bubble-Map\09081-SWS Bubble1

**STORM SEWER  
BUBBLE  
MAP**  
SHEET TITLE  
472-84830  
PROJECT NUMBER

DESIGN BY: JRA  
DRAWN BY: WNU  
CHECKED BY: JRA

ISSUED: October 9, 2012  
REVISED:

SHEET NO.  
41 of 212