



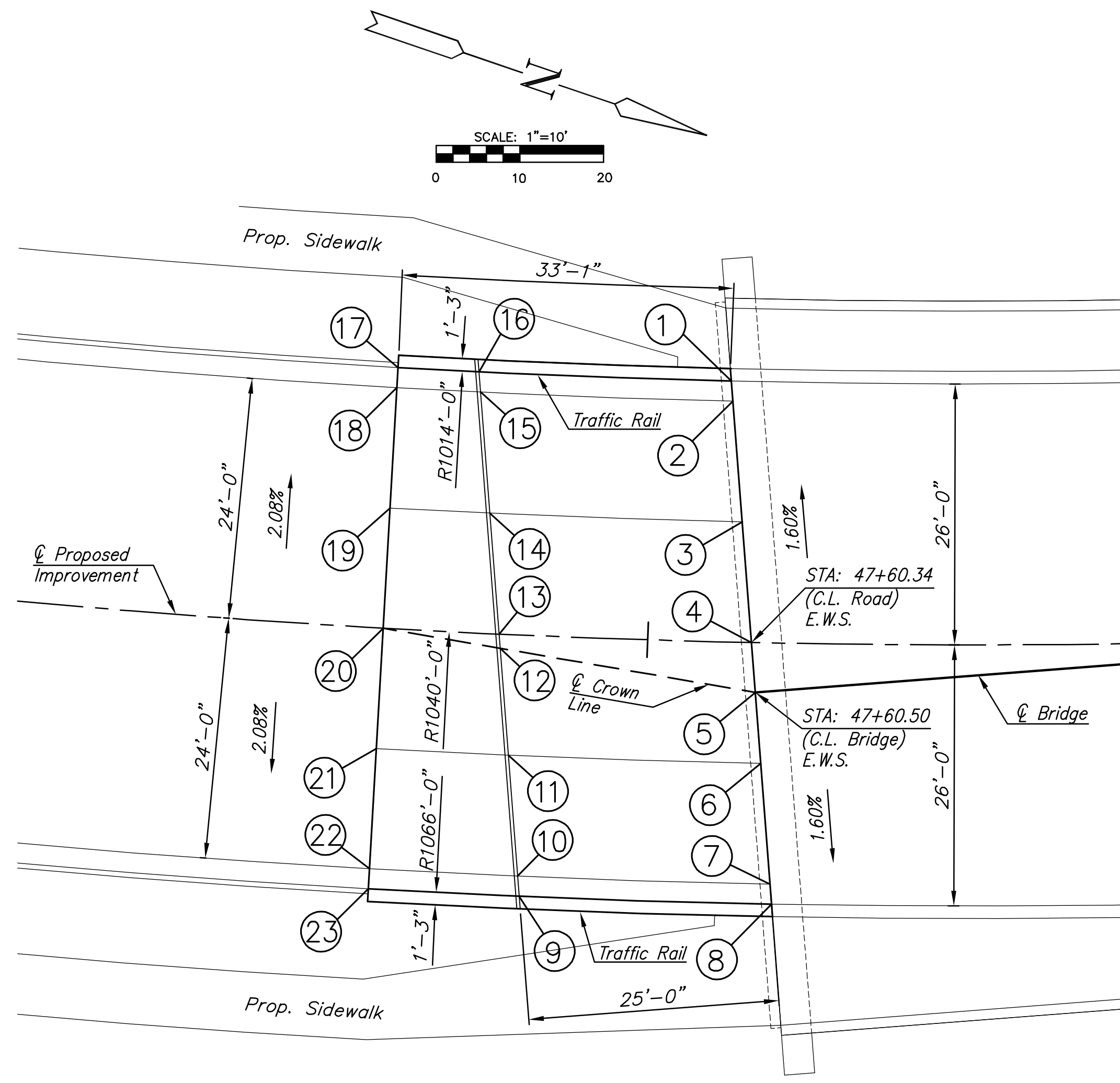
BROADWAY BRIDGE AT 34TH STREET SOUTH

**APPROACH
SLAB
PAVING
PLAN**
SHEET TITLE
472-84830
PROJECT NUMBER

DESIGN BY: JRA
DRAWN BY: DPG
CHECKED BY: JRA

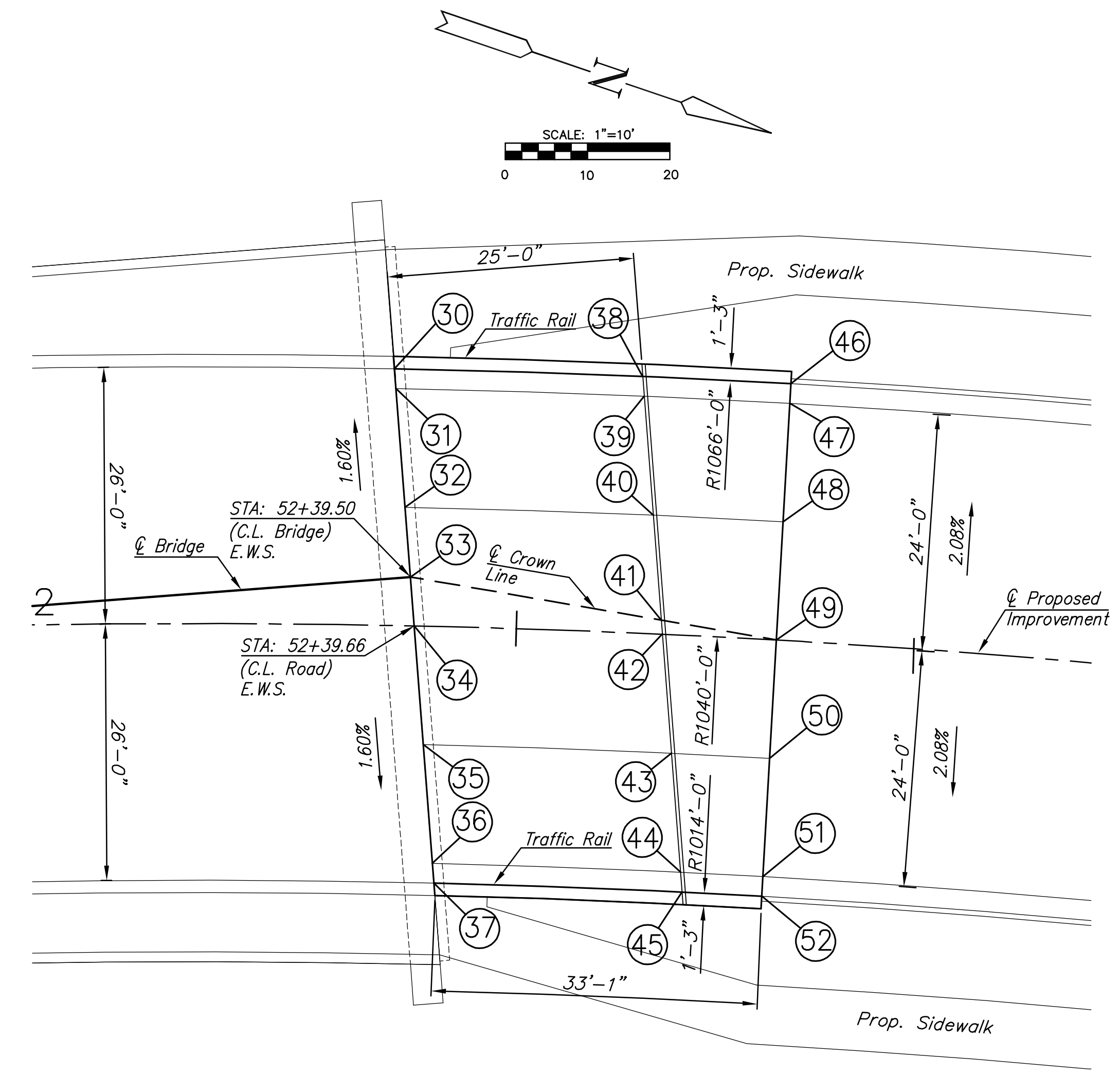
ISSUED
October 9, 2012
REVISED

SHEET NO.
43 of 212



SOUTH APPROACH SLAB PLAN

Point	Northing	Easting	Station	Offset	Elevation	Description
1	N 1665391.5995	E 1650193.2250	47+57.72	26.00 L	1315.90	Flowline at E.W.S.
2	N 1665392.3894	E 1650195.0734	47+57.93	24.00 L	1315.93	E.W.S.
3	N 1665397.1284	E 1650206.1629	47+59.15	12.00 L	1316.12	E.W.S.
4	N 1665401.8668	E 1650217.2511	47+60.34	0.00 L	1316.31	E.W.S.
5	N 1665403.8178	E 1650221.8166	47+60.82	4.94 R	1316.39	E.W.S.
6	N 1665406.6047	E 1650228.3381	47+61.50	12.00 R	1316.28	E.W.S.
7	N 1665411.3421	E 1650239.4239	47+62.64	24.00 R	1316.09	E.W.S.
8	N 1665412.1771	E 1650241.2569	47+62.83	26.00 R	1316.06	Flowline at E.W.S.
9	N 1665388.1354	E 1650248.6081	47+38.29	26.00 R	1315.04	Flowline
10	N 1665387.2945	E 1650246.7704	47+38.06	24.00 R	1315.07	
11	N 1665382.5449	E 1650235.6560	47+36.64	12.00 R	1315.26	
12	N 1665378.3525	E 1650225.8457	47+35.36	1.41 R	1315.42	
13	N 1665377.7945	E 1650224.5397	47+35.19	0.00 L	1315.39	
14	N 1665373.0432	E 1650213.4216	47+33.70	12.00 L	1315.12	
15	N 1665368.2912	E 1650202.3014	47+32.17	24.00 L	1314.84	
16	N 1665367.4991	E 1650200.4478	47+31.92	26.00 L	1314.77	Flowline
17	N 1665359.7207	E 1650202.6407	47+23.63	26.00 L	1314.42	Flowline
18	N 1665360.2557	E 1650204.5678	47+23.63	24.00 L	1314.46	
19	N 1665363.4658	E 1650216.1305	47+23.63	12.00 L	1314.71	
20	N 1665366.6758	E 1650227.6931	47+23.63	0.00 R	1314.96	
21	N 1665369.8858	E 1650239.2558	47+23.63	12.00 R	1314.71	
22	N 1665373.0959	E 1650250.8185	47+23.63	24.00 R	1314.46	
23	N 1665373.6309	E 1650252.7456	47+23.63	26.00 R	1314.42	Flowline



NORTH APPROACH SLAB PLAN

Point	Northing	Easting	Station	Offset	Elevation	Description
30	N 1665835.9710	E 1650014.1335	52+37.17	26.00 L	1316.06	Flowline at E.W.S.
31	N 1665836.7620	E 1650015.9847	52+37.36	24.00 L	1316.09	E.W.S.
32	N 1665841.4993	E 1650027.0702	52+38.50	12.00 L	1316.28	E.W.S.
33	N 1665844.2847	E 1650033.5883	52+39.18	0.00 L	1316.39	E.W.S.
34	N 1665846.2357	E 1650038.1538	52+39.66	4.94 R	1316.31	E.W.S.
35	N 1665850.9754	E 1650049.2449	52+40.85	12.00 R	1316.12	E.W.S.
36	N 1665855.7143	E 1650060.3342	52+42.07	24.00 R	1315.93	E.W.S.
37	N 1665856.5030	E 1650062.1799	52+42.28	26.00 R	1315.90	Flowline at E.W.S.
38	N 1665860.0166	E 1650006.7823	52+61.71	26.00 R	1315.04	Flowline
39	N 1665860.8081	E 1650008.6347	52+61.94	24.00 R	1315.07	
40	N 1665865.5577	E 1650019.7490	52+63.36	12.00 R	1315.26	
41	N 1665869.7500	E 1650029.5593	52+64.64	1.41 L	1315.42	
42	N 1665870.3081	E 1650030.8652	52+64.81	0.00 L	1315.39	
43	N 1665875.0593	E 1650041.9833	52+66.30	12.00 L	1315.12	
44	N 1665879.8113	E 1650053.1034	52+67.83	24.00 L	1314.84	
45	N 1665880.6035	E 1650054.9571	52+68.08	26.00 L	1314.77	Flowline
46	N 1665874.4714	E 1650002.6594	52+76.37	26.00 L	1314.42	Flowline
47	N 1665875.0075	E 1650004.5862	52+76.37	24.00 L	1314.46	
48	N 1665878.2165	E 1650016.1492	52+76.37	12.00 L	1314.71	
49	N 1665881.4265	E 1650027.7118	52+76.37	0.00 R	1314.96	
50	N 1665884.6360	E 1650039.2747	52+76.37	12.00 R	1314.71	
51	N 1665887.8455	E 1650050.8375	52+76.37	24.00 R	1314.46	
52	N 1665888.3816	E 1650052.7643	52+76.37	26.00 R	1314.42	Flowline

PLOTED: Thursday, October 11, 2012 @ 10:37AM

J:\Civil\09081.dwg\Fov\09081 Appr. Plan