

STATE	PROJECT NO.	YEAR	SHEET NO.	TOTAL SHEETS
KANSAS	87 N-0519-01	2012	66	212

**MKEC**  
ENGINEERING  
CONSULTANTS, INC.  
411 N. WEBB ROAD  
WICHITA, K.S. 67206  
316-684-9600



# BROADWAY BRIDGE AT 34TH STREET SOUTH

**WALL PLAN AND PROFILES  
WALLS "A", "B"  
AND "C"**  
SHEET TITLE  
472-84830  
PROJECT NUMBER

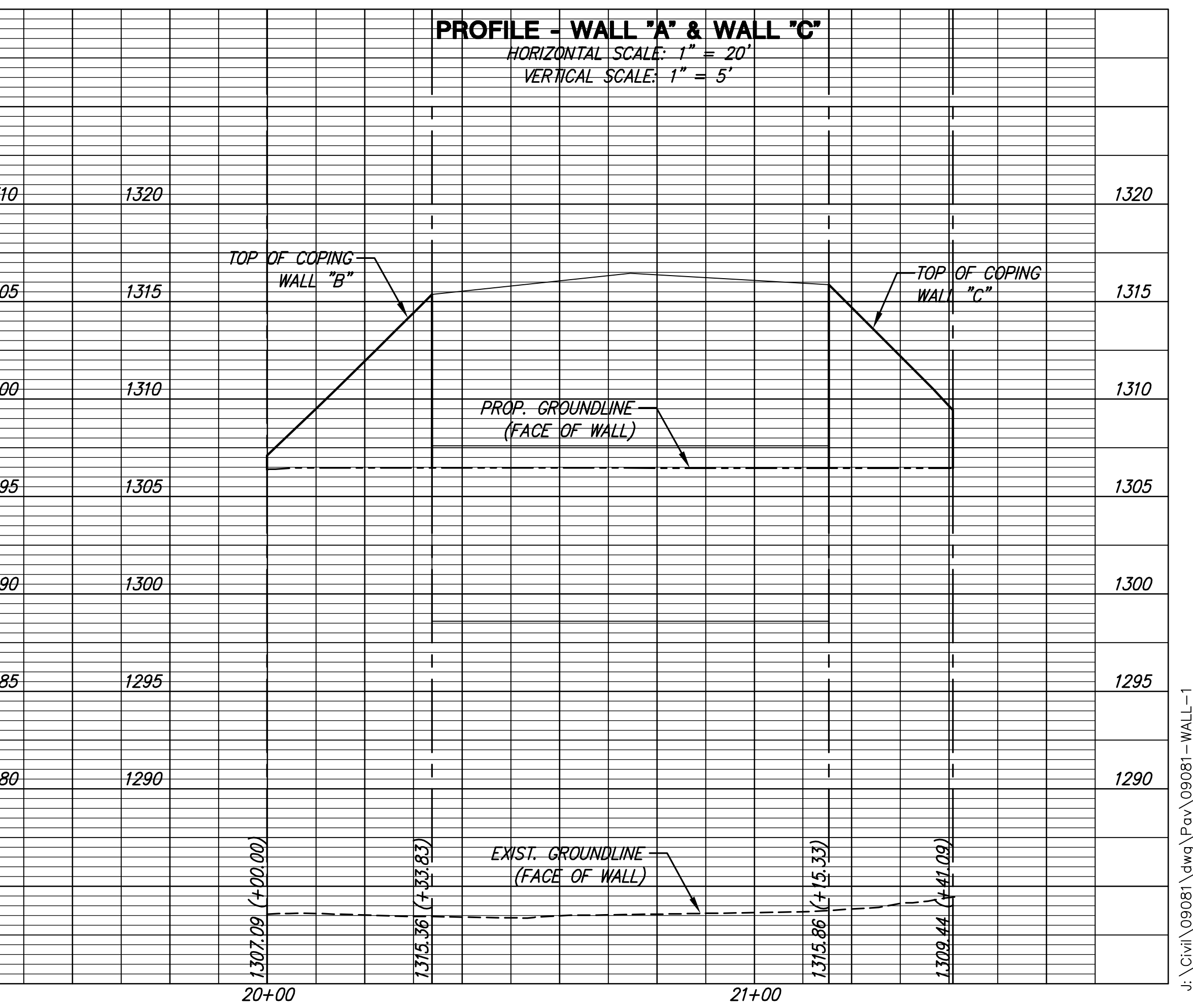
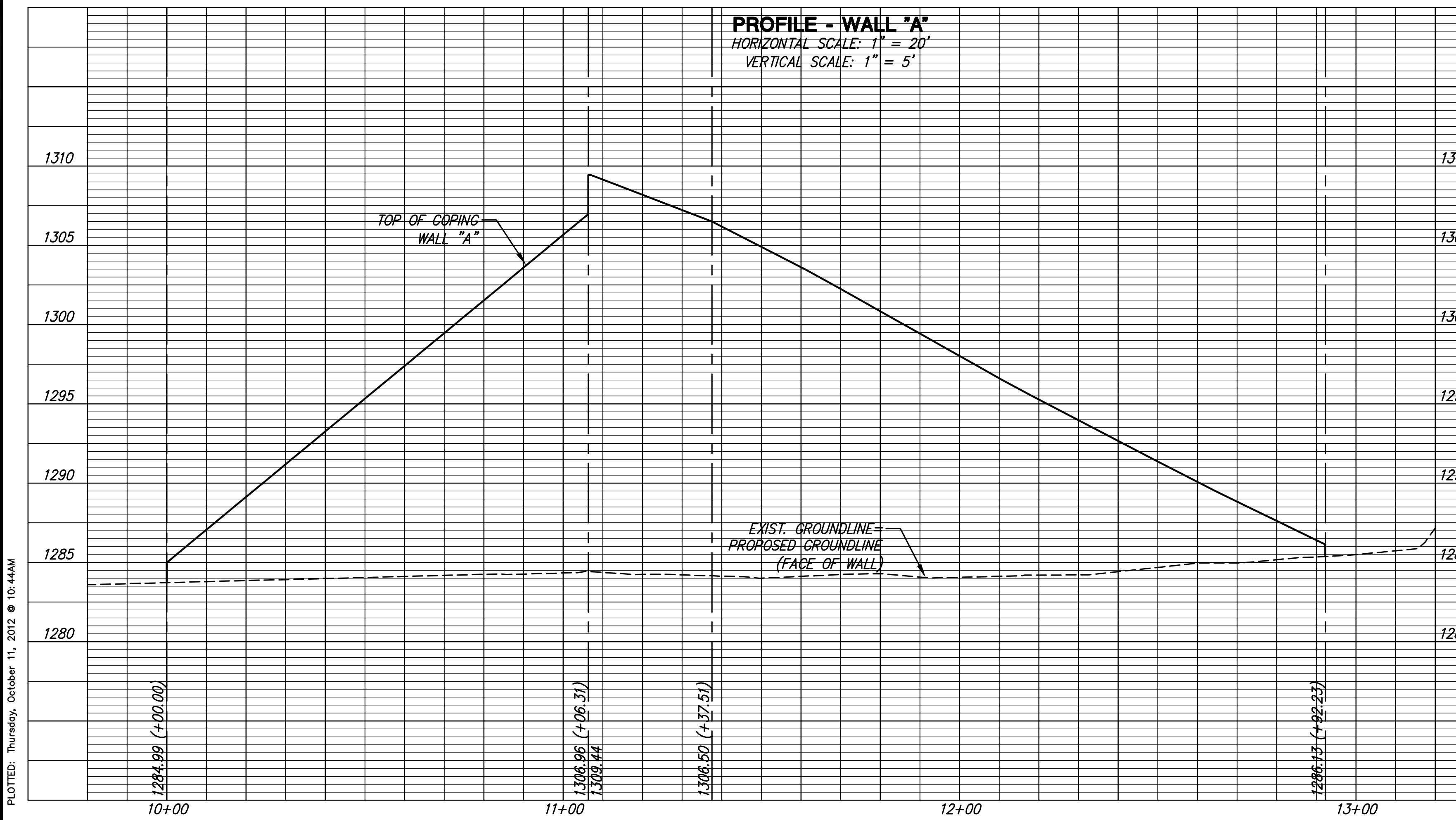
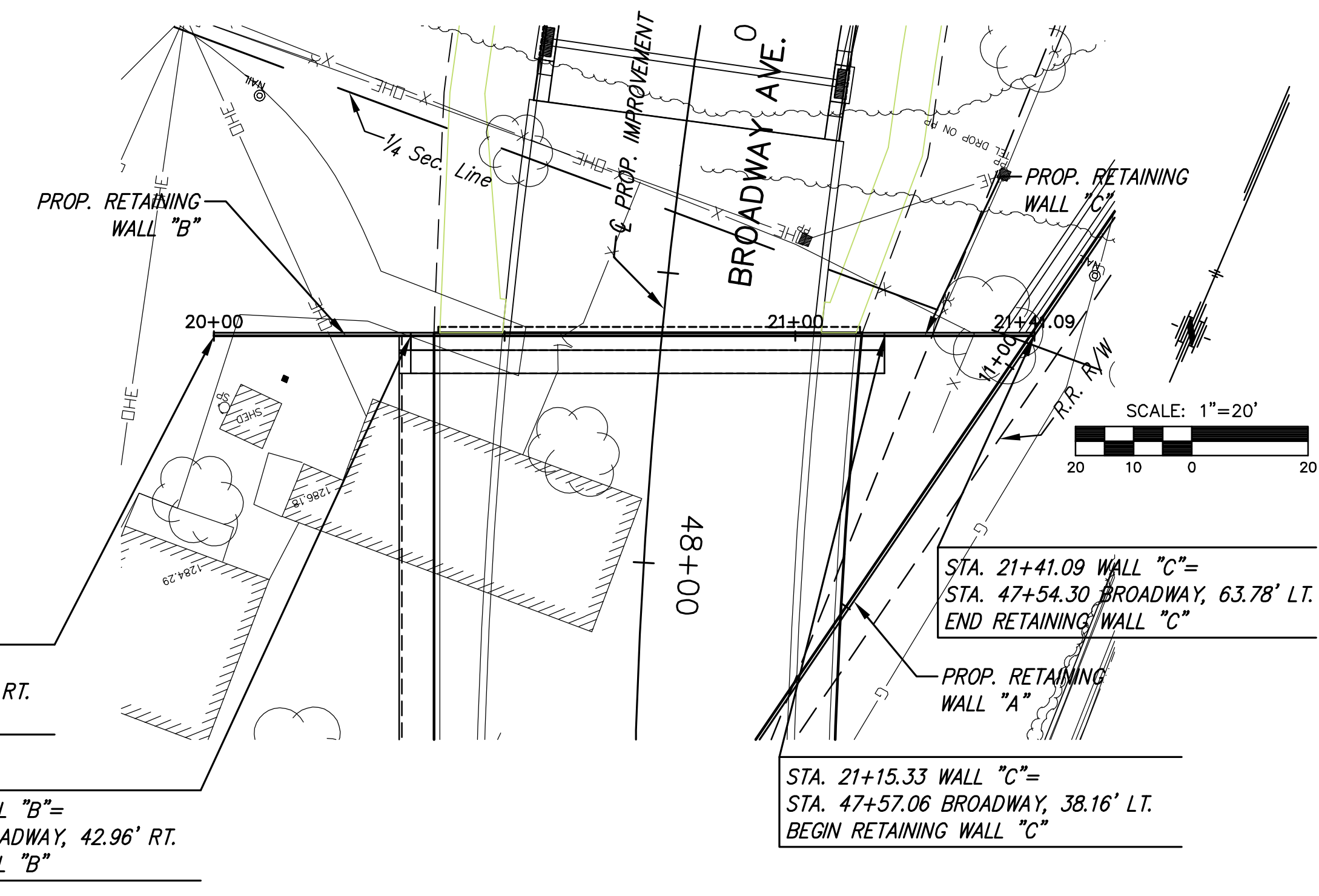
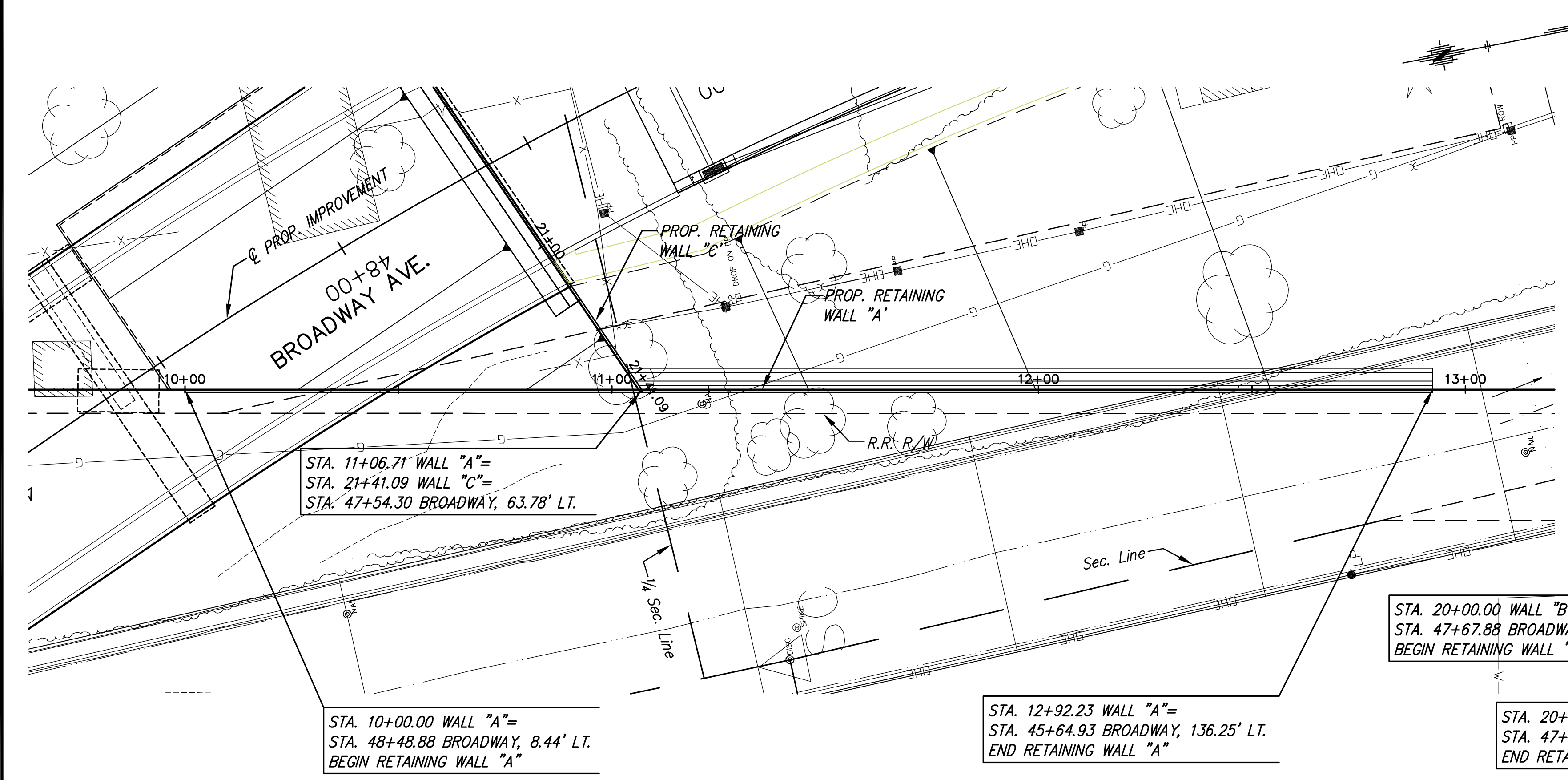
DESIGN BY: JRA  
DRAWN BY: WNU  
CHECKED BY: JRA

ISSUED: October 9, 2012  
REVISED:

SHEET NO.  
**66 of 212**

**NOTES:**

- SEE SHEET 68 (MISCELLANEOUS RETAINING WALL DETAILS) FOR FINISHED GRADE AT TOP OF WALLS ADJACENT TO RETAINING WALLS.



PLOTED: Thursday, October 11, 2012 @ 10:44AM

J:\Civil\09081.dwg\Pos\09081-WALL-1