

CONTROL PT. #1 = STA. 35+72.52, 36.47' LT.
 1. N = 1664234.13 E = 1650098.75
 2. 5/8" REBAR WITH RED "MKEC CONTROL POINT" CAP
 3. LIGHT POLE 8' EAST
 4. BACK OF WEST CURB OF BROADWAY 12' EAST

CONTROL PT. #7 = STA. 40+78.33, 260.67' RT.
 1. N = 1664642.87 E = 1650447.56
 2. 5/8" REBAR WITH RED "MKEC CONTROL POINT" CAP
 3. FENCE GATE POST 8.8' SOUTH-SOUTHEAST
 4. POWER POLE 31' NORTH

CONTROL PT. #6 = STA. 44+54.29, 133.68' RT.
 1. N = 1665102.34 E = 1650399.19
 2. 5/8" REBAR WITH RED "MKEC CONTROL POINT" CAP
 3. POWER POLE 49' NORTHEAST
 4. FACE OF BUILDING 37' EAST

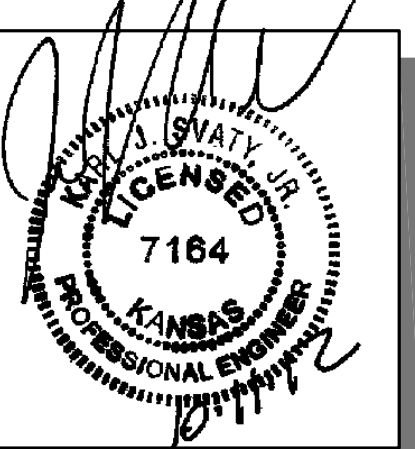
CONTROL PT. #8 = STA. 52+06.15, 91.93' LT.
 1. N = 1665783.93 E = 1649962.05
 2. 5/8" REBAR WITH RED "MKEC CONTROL POINT" CAP
 3. FENCE GATE POST 48.7' SOUTHEAST
 4. POWER POLE 90' NORTH-NORTHEAST

CONTROL PT. #3 = STA. 56+91.43, 52.98' RT.
 1. N = 1666285.91 E = 1650050.91
 2. 5/8" REBAR WITH RED "MKEC CONTROL POINT" CAP
 3. POWER POLE 45' SOUTH
 4. BACK OF WEST CURB OF BROADWAY 8' EAST

STATE	PROJECT NO.	YEAR	SHEET NO.	TOTAL SHEETS
KANSAS	87 N-0519-01	2012	77	282

CONTROL PT. #5 = 64+54.39, 51.95' LT.
 1. N = 1667048.08 E = 1650009.52
 2. 5/8" REBAR WITH RED "MKEC CONTROL POINT" CAP
 3. SANITARY SEWER MANHOLE 11.6' SOUTH-SOUTHEAST
 4. SANITARY SEWER MANHOLE 22.1' EAST-SOUTHEAST
 5. SOUTHWEST CORNER OF SIDEWALK 13.4' EAST-NORTHEAST

MKEC
 ENGINEERING
 CONSULTANTS, INC.
 411 N. WEBB ROAD
 WICHITA, KS. 67206
 316-684-9600



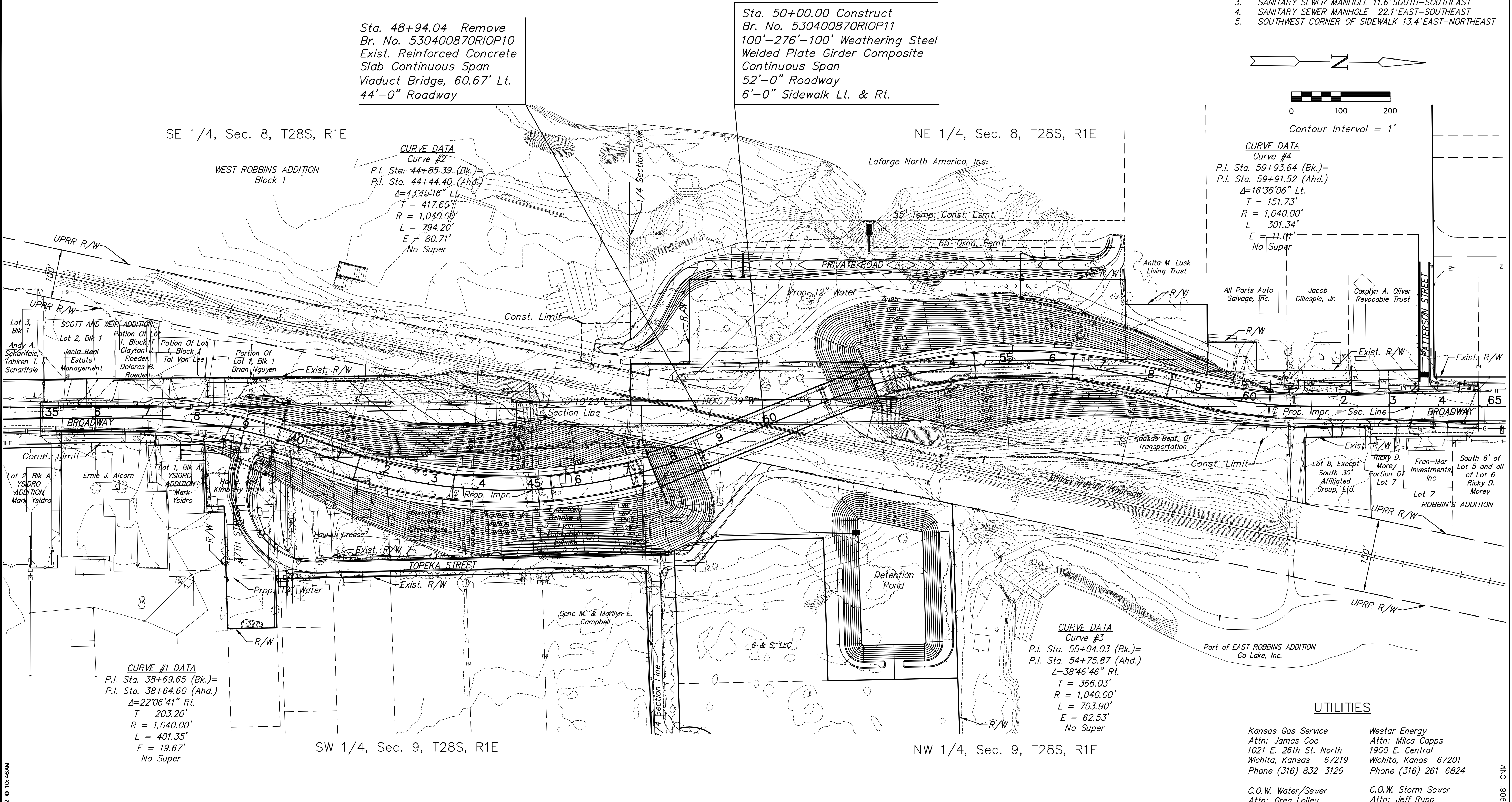
**BROADWAY BRIDGE
 AT 34TH STREET SOUTH**

**BRIDGE
 CONTOUR
 MAP**
 SHEET TITLE
 472-84830
 PROJECT NUMBER

DESIGN BY: **KJS**
 DRAWN BY: **DPG**
 CHECKED BY: **JAG**

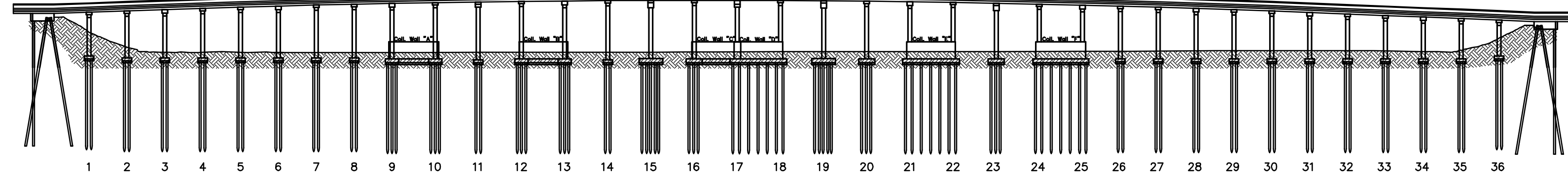
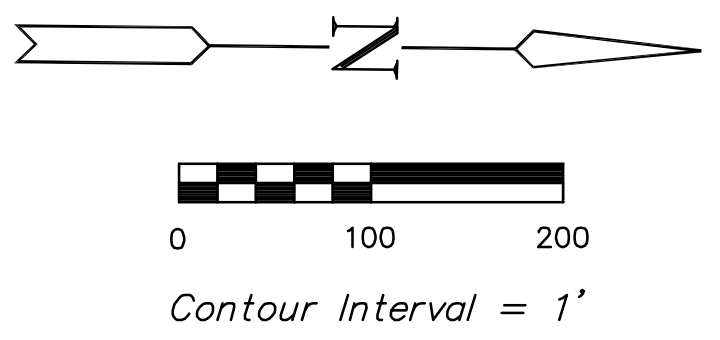
ISSUED: **October 9, 2012**
 REVISED:

SHEET NO.
77 of 212



Sta. 48+94.04 Remove
 Br. No. 530400870RIOP10
 Exist. Reinforced Concrete
 Slab Continuous Span
 Viaduct Bridge, 60.67' Lt.
 44'-0" Roadway

Sta. 50+00.00 Construct
 Br. No. 530400870RIOP11
 100'-276'-100' Weathering Steel
 Welded Plate Girder Composite
 Continuous Span
 52'-0" Roadway
 6'-0" Sidewalk Lt. & Rt.



EXISTING BRIDGE ELEVATION

PLOTTED: Thursday, October 11, 2012 @ 10:46AM

J:\Civil\09081.dwg\BRIDGE_09081.CNM