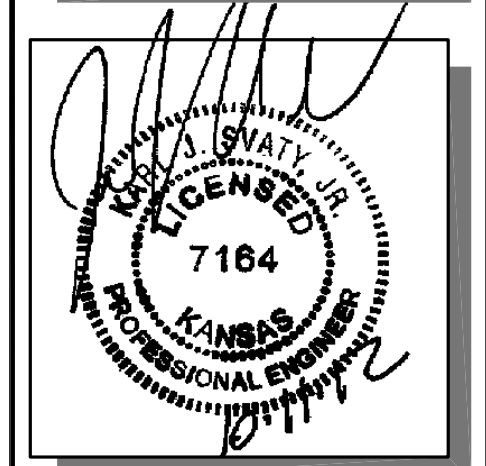


| | | | | |
|--------|--------------|------|-----------|--------------|
| STATE | PROJECT NO. | YEAR | SHEET NO. | TOTAL SHEETS |
| KANSAS | 87 N-0519-01 | 2012 | 84 | 212 |

MKEC
ENGINEERING
CONSULTANTS, INC.
411 N. WEBB ROAD
WICHITA, K.S. 67206
316-684-9600

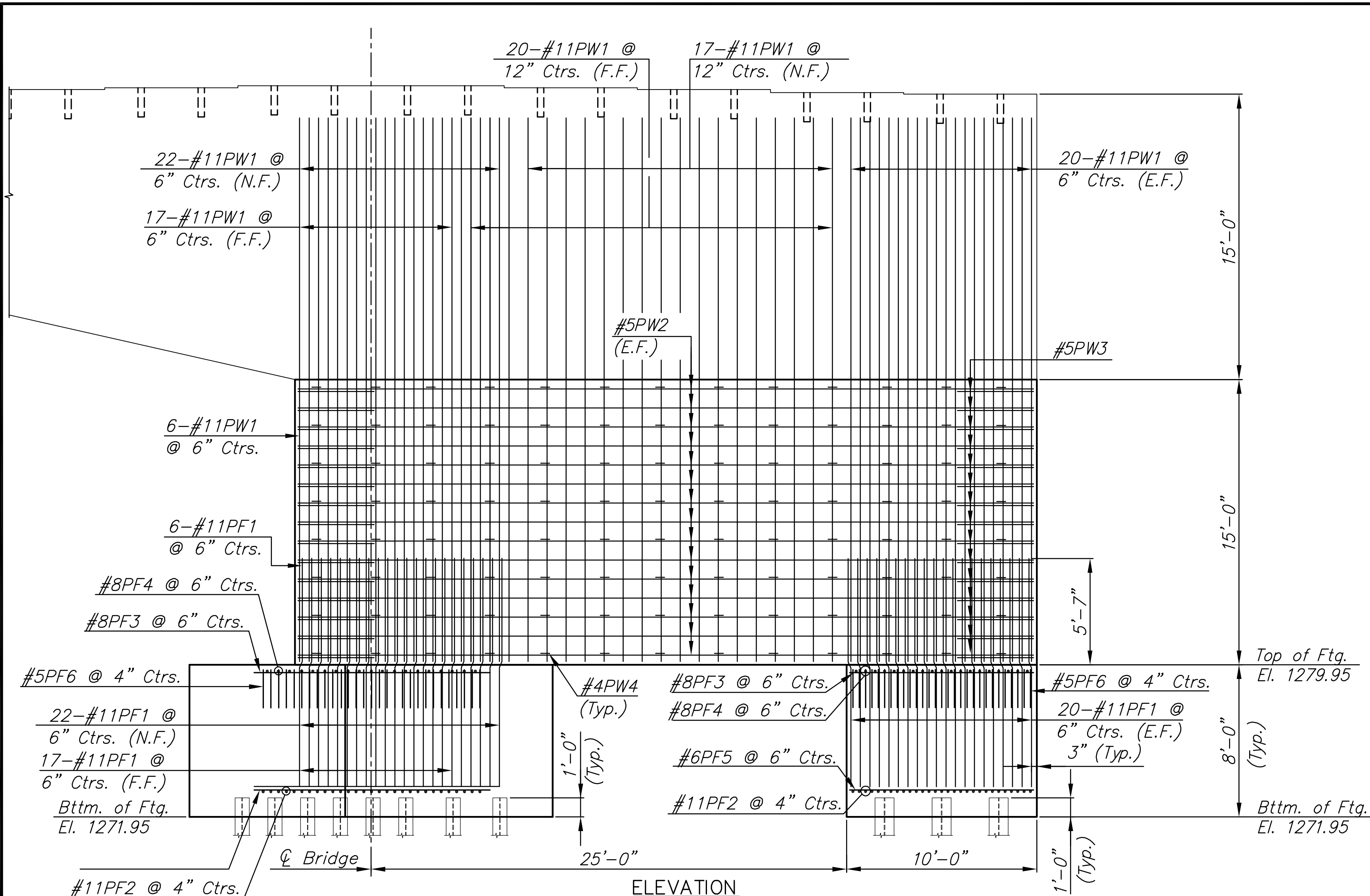


BROADWAY BRIDGE AT 34TH STREET SOUTH

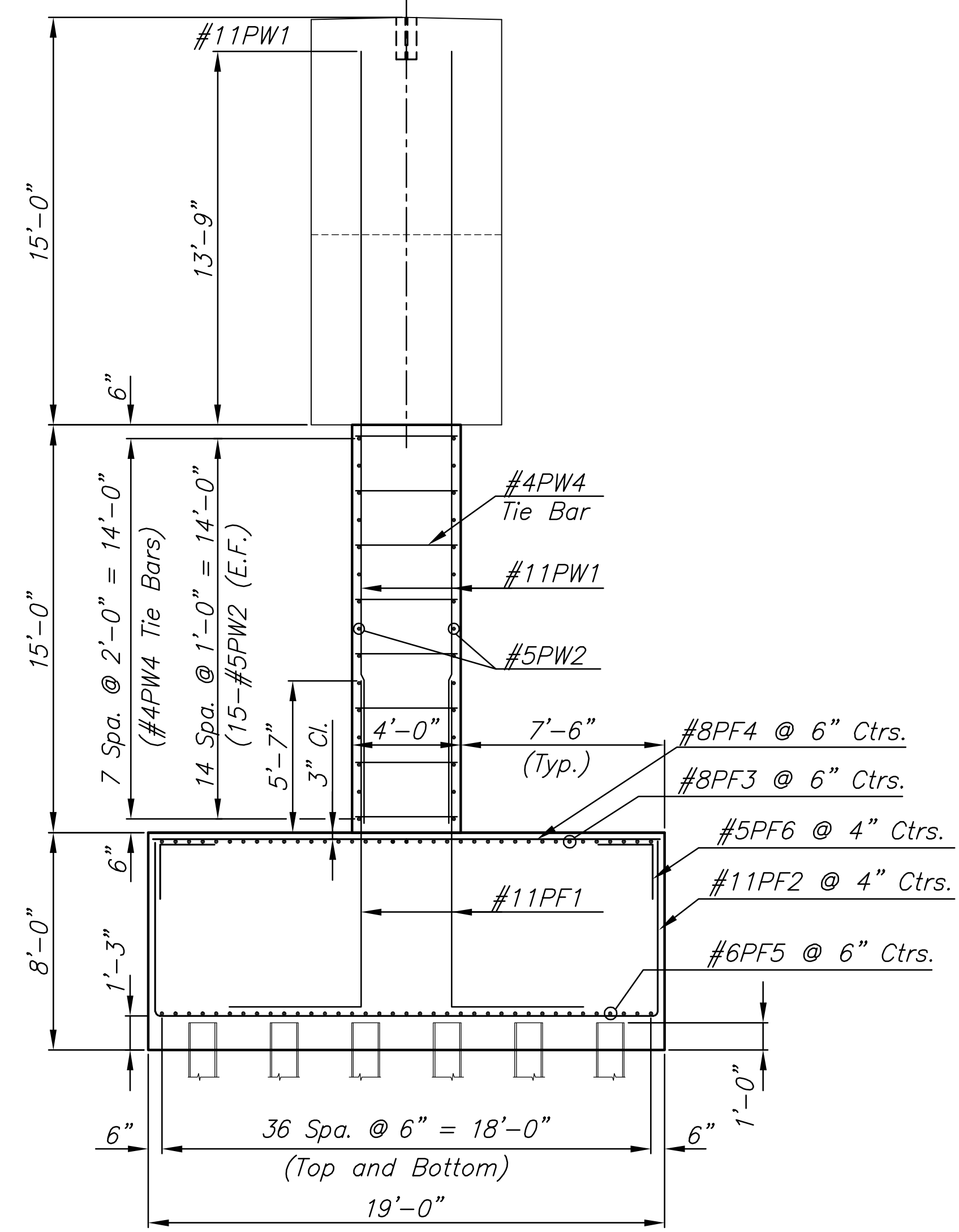
**BRIDGE
PIER WALL
AND FOOTING
DETAILS**
SHEET TITLE
472-84830
PROJECT NUMBER

DESIGN BY: JAG
DRAWN BY: DPG
CHECKED BY: KJS

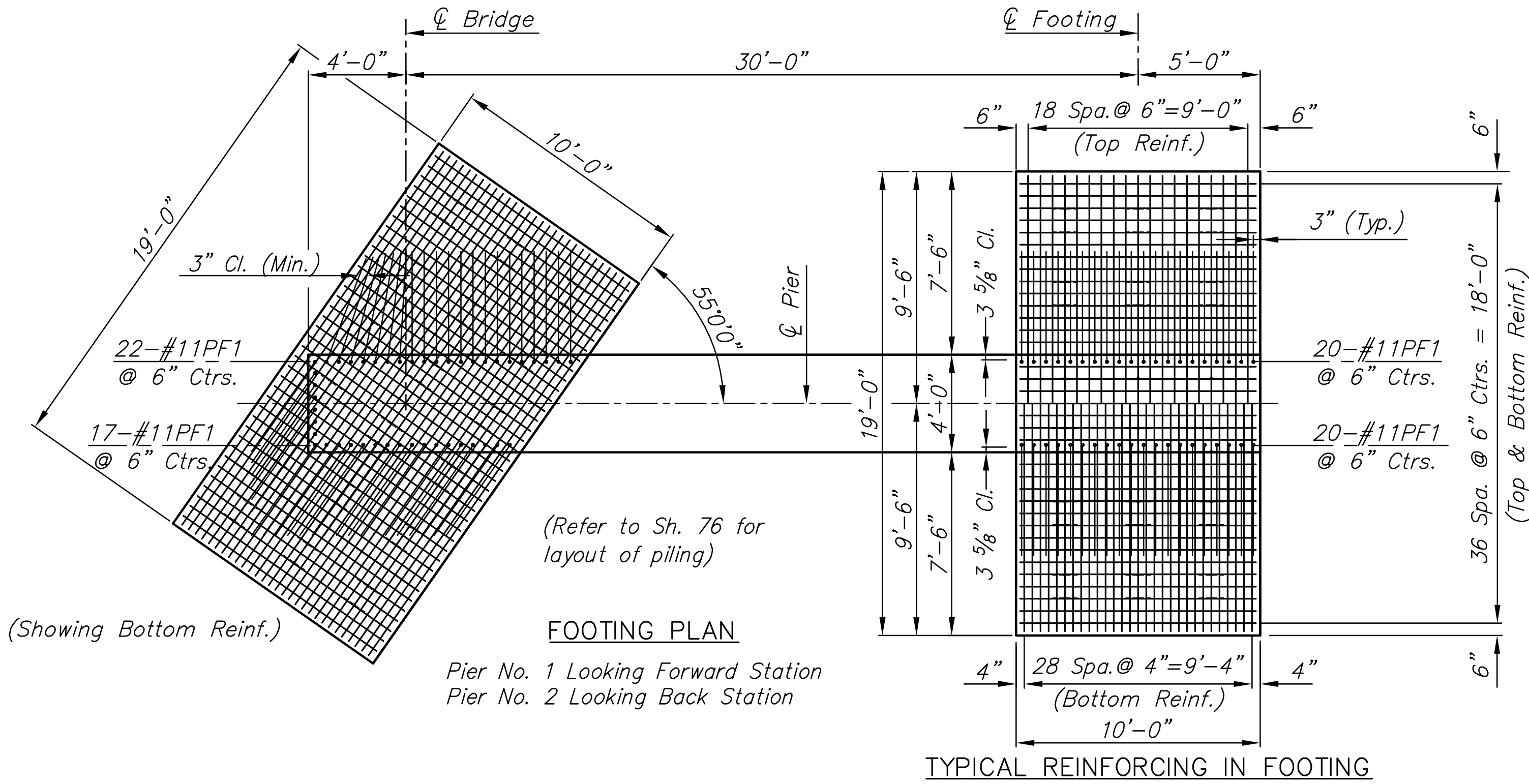
ISSUED: October 9, 2012
REVISED:



ELEVATION
Pier No. 1 Looking Forward Station
Pier No. 2 Looking Back Station

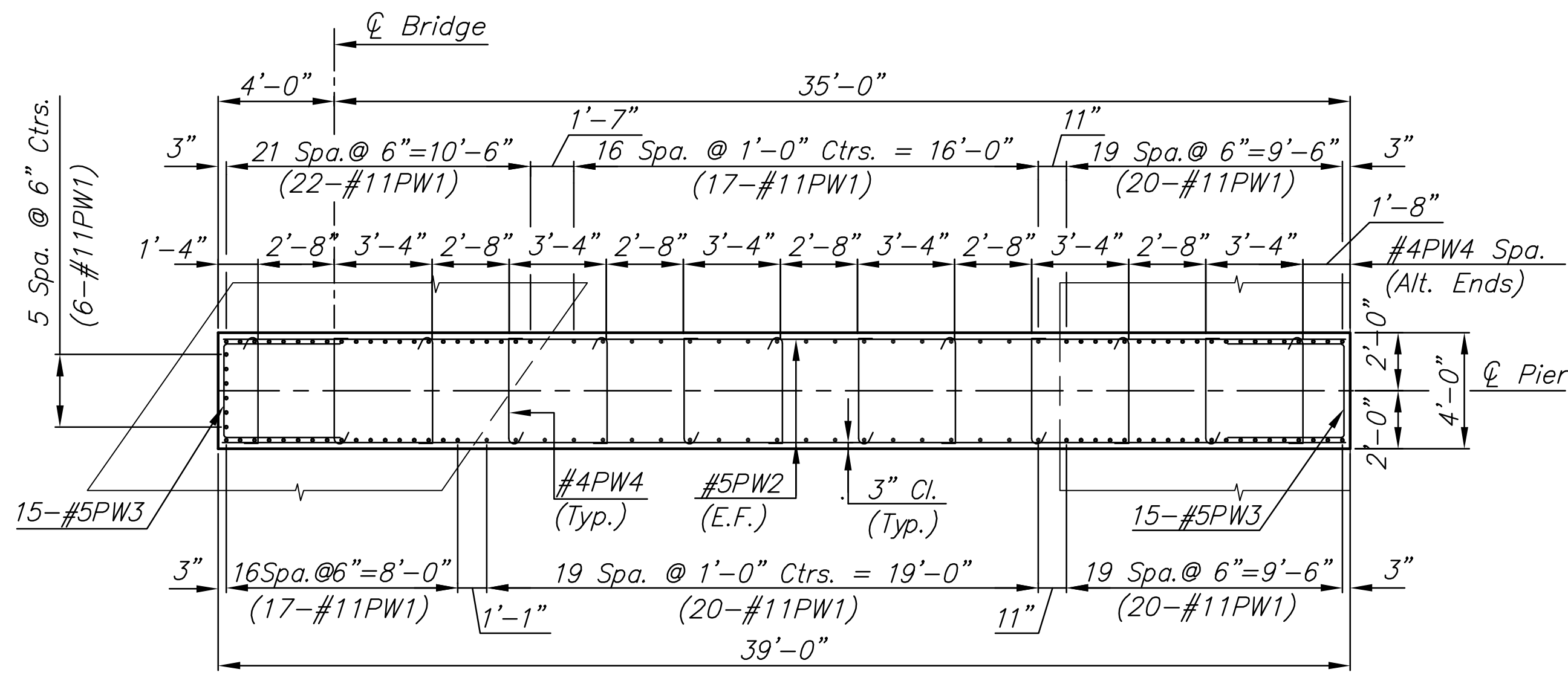


SECTION



FOOTING PLAN
Pier No. 1 Looking Forward Station
Pier No. 2 Looking Back Station

TYPICAL REINFORCING IN FOOTING



PIER WALL PLAN
Pier No. 1 Looking Forward Station
Pier No. 2 Looking Back Station

PLOTED: Thursday, October 11, 2012 @ 10:48AM

J:\Civil\09081.dwg\BRIDGE\09081_PIR_02