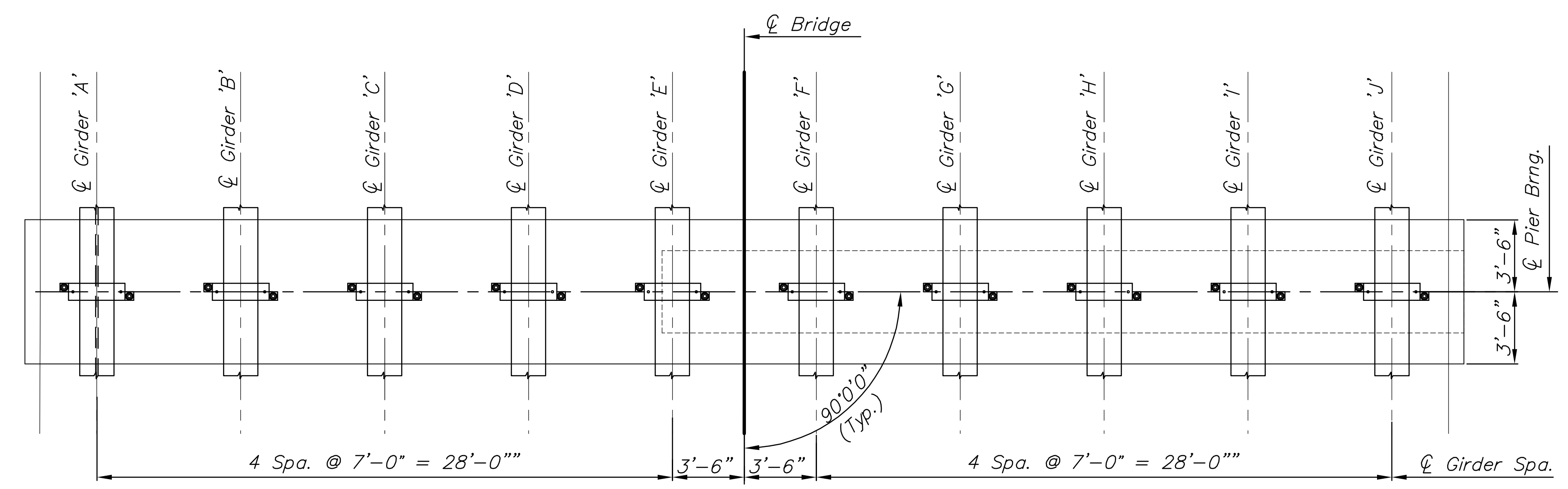


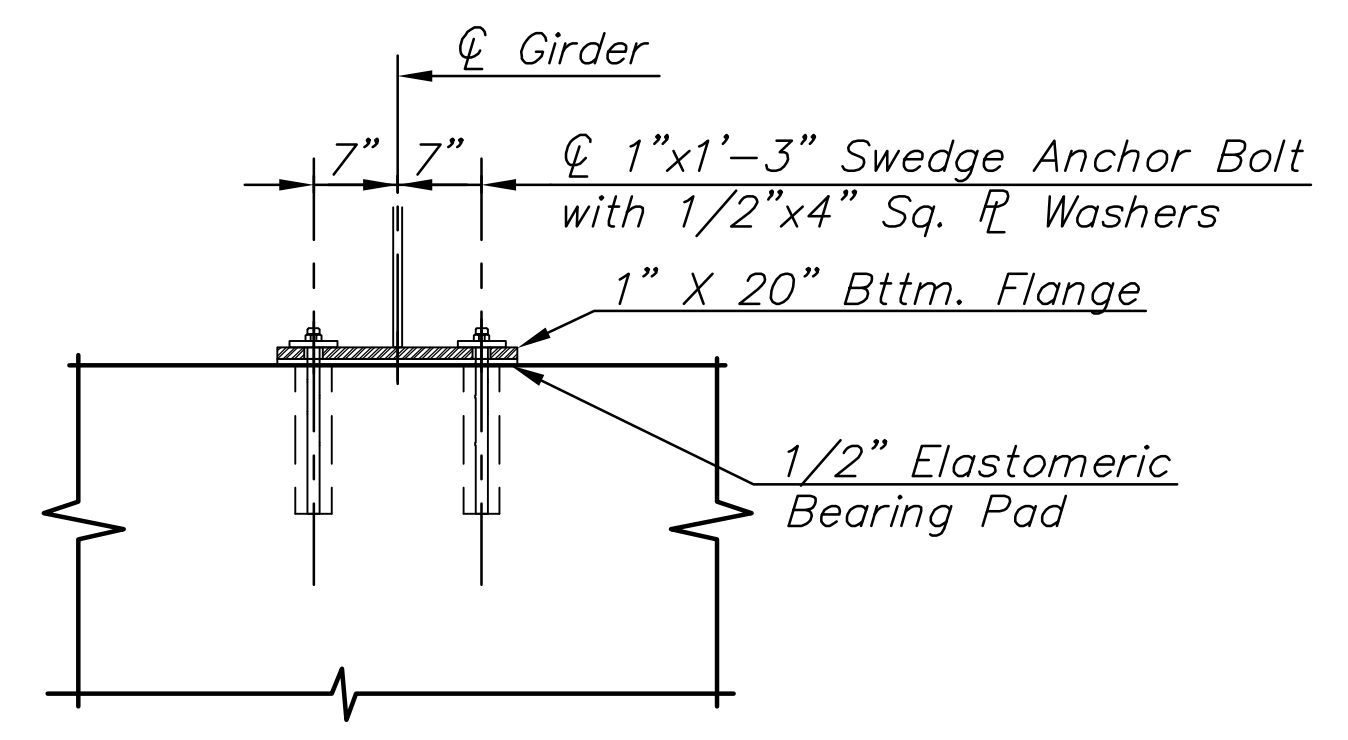
STATE	PROJECT NO.	YEAR	SHEET NO.	TOTAL SHEETS
KANSAS	87 N-0519-01	2012	86	212

MKEC
ENGINEERING
CONSULTANTS, INC.

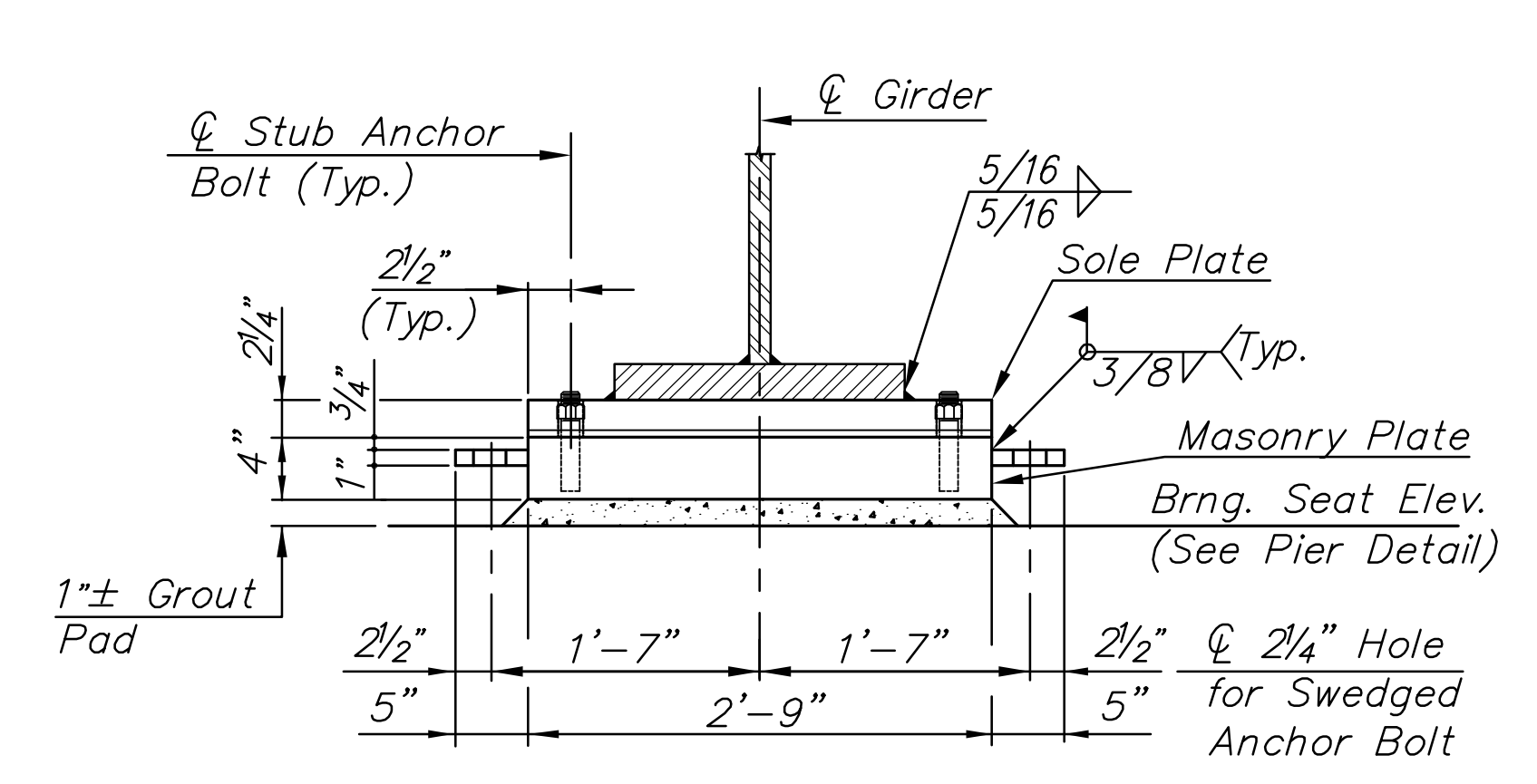
411 N. WEBB ROAD
WICHITA, K.S. 67206
316-684-9600



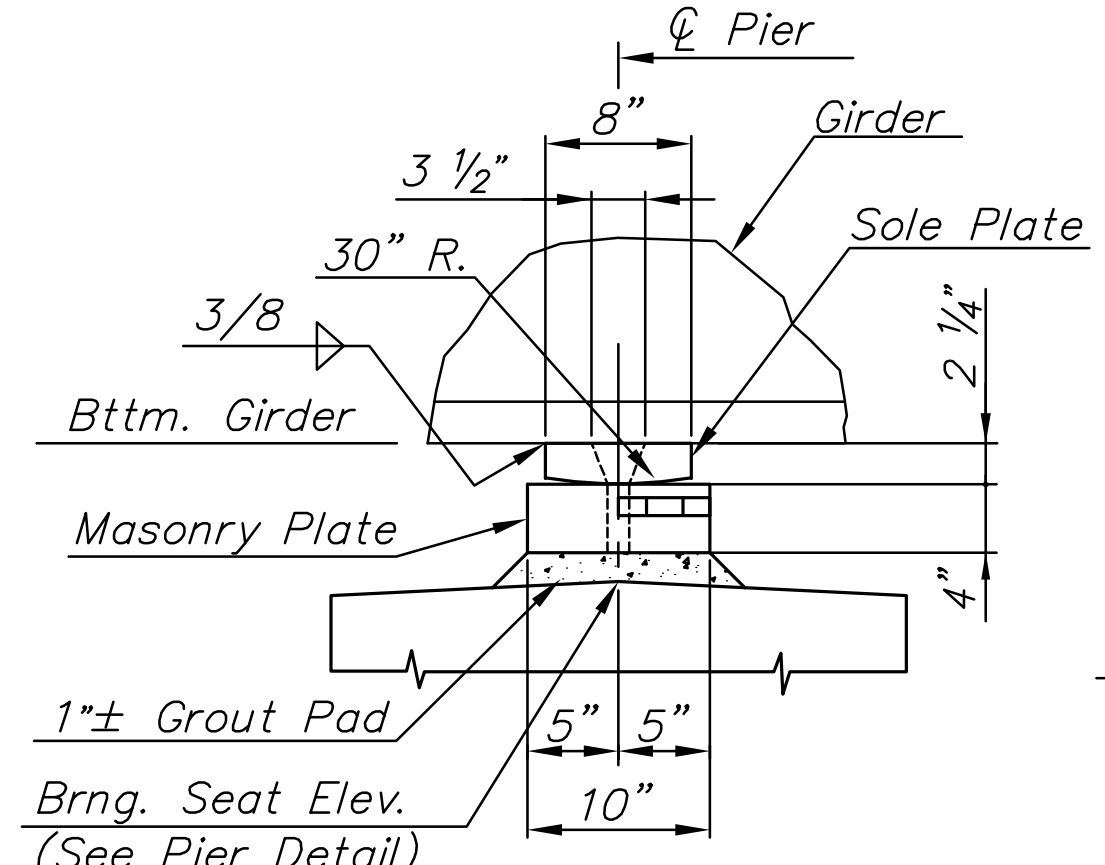
PIER BEARING DEVICE LOCATION



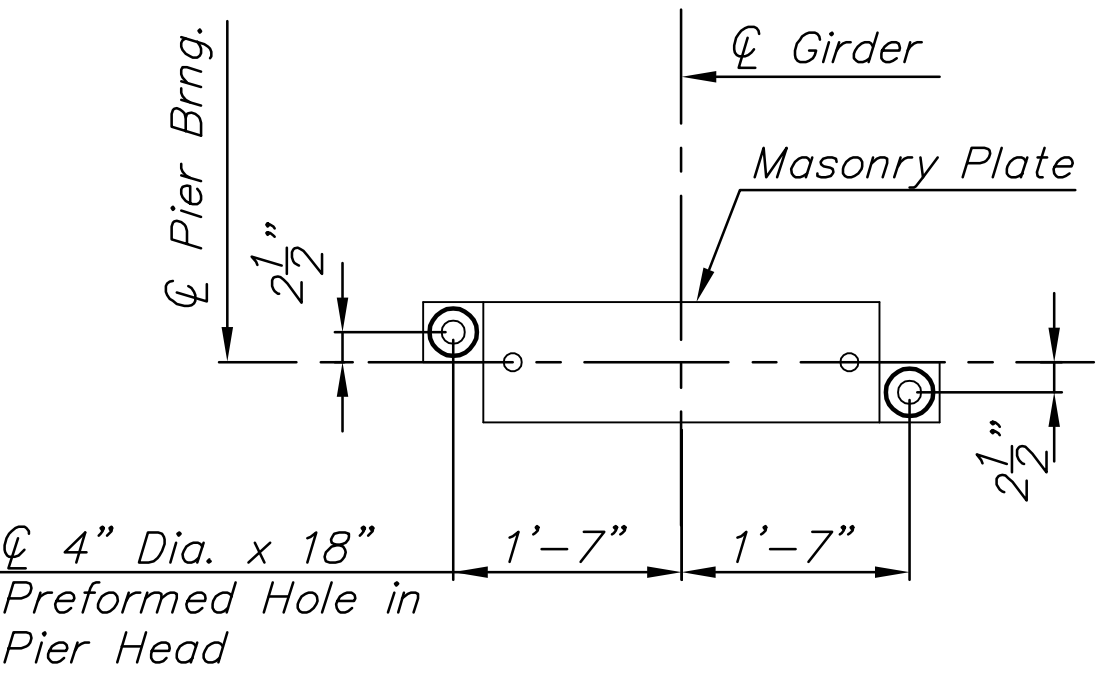
TYPICAL ABUTMENT GIRDER TIE DOWN



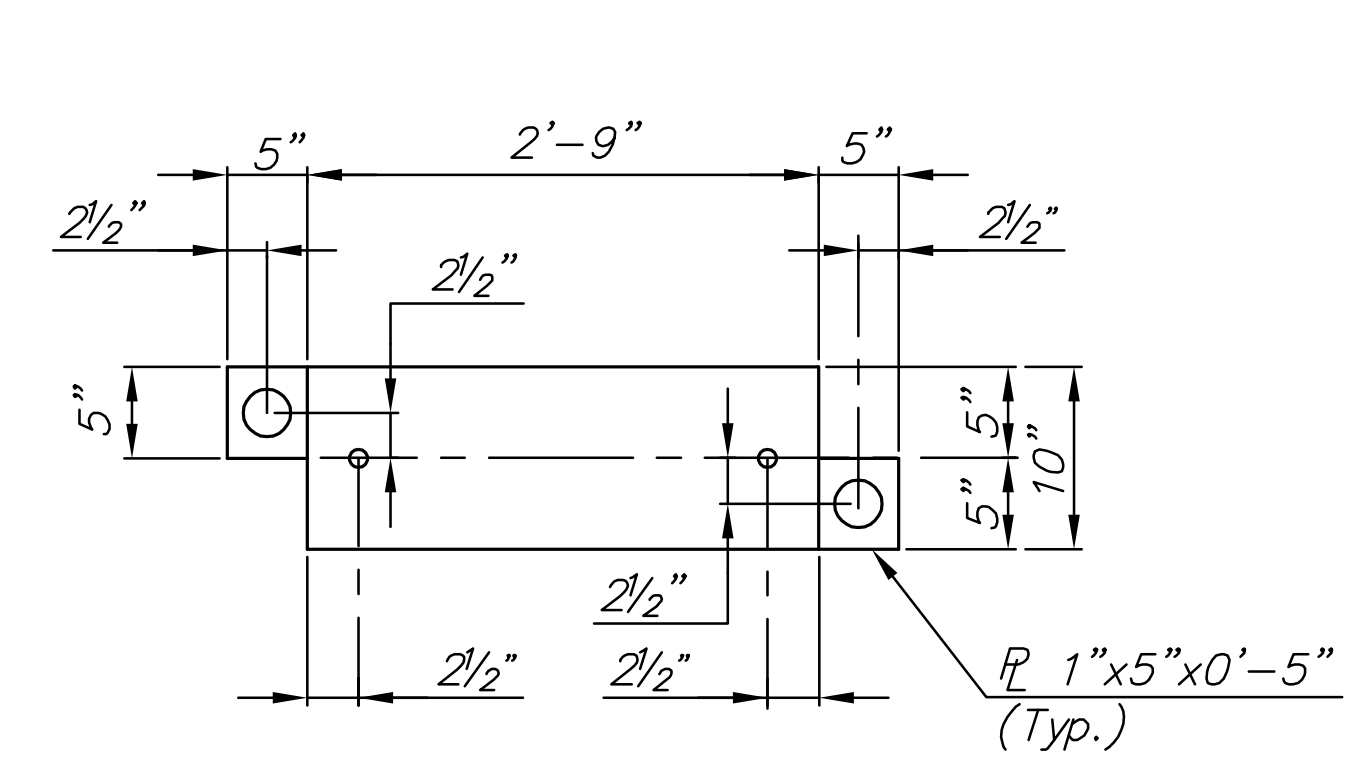
ELEVATION



SIDE VIEW

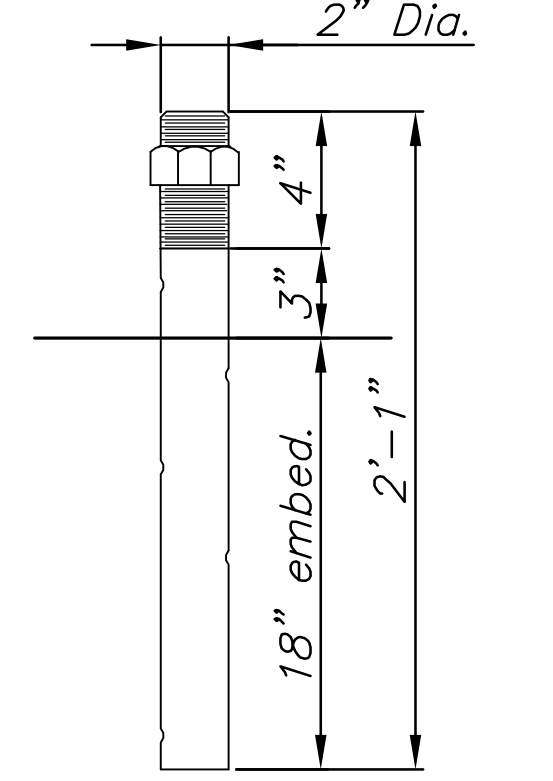


PIER ANCHOR BOLT LAYOUT

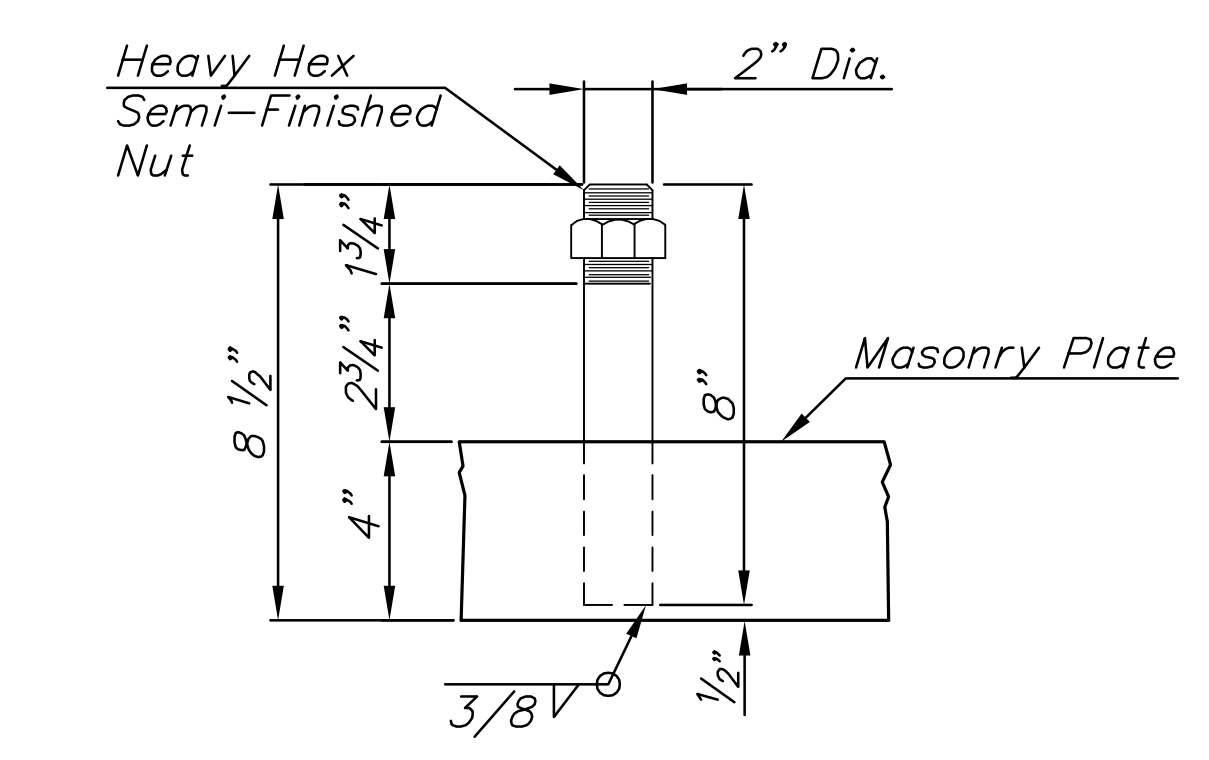


MASONRY PLATE PLAN

4" Dia. x 18" Preformed Holes provided in Pier Head for bearing plate connection.

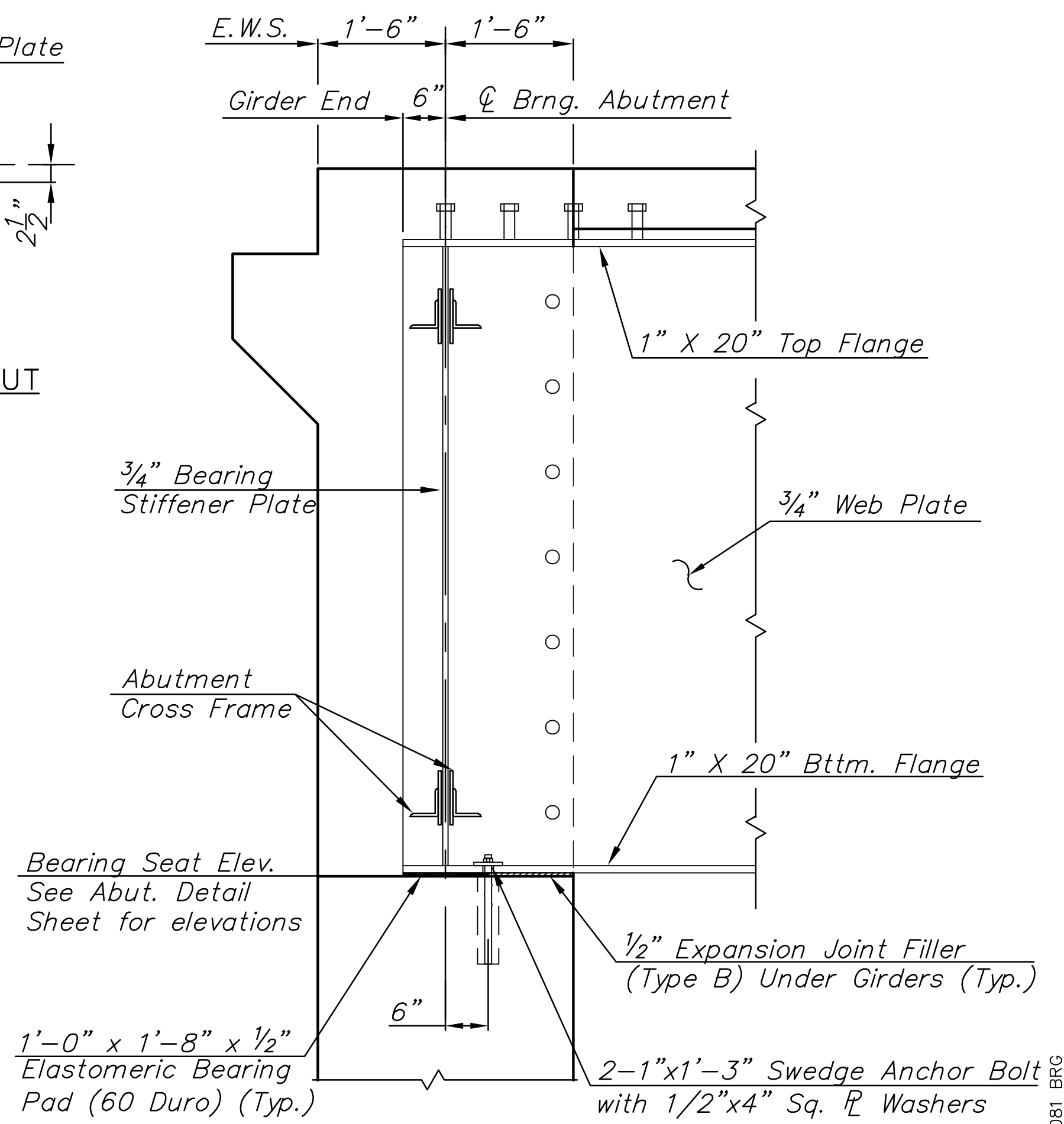


SWEDGED ANCHOR BOLT



STUB ANCHOR BOLT

The stub anchor bolts shall have a driven fit in the masonry plate holes with the bottom of the bolts 1/2" above the bottom of the plates. The bolts shall be welded to the base plates with a 3/8" continuous fillet weld. No weld metal shall extend below the bottom of the plate.



ABUTMENT BEARING SEAT DETAIL AND DIAPHRAM CONNECTION

Elastomeric Bearing Pad and Expansion Joint Filler shall be Subsidiary to Concrete 4.0 (A.E.)

(40 Swedge Anchor Bolts required)

SUMMARY OF PIER BEARING DEVICE QUANTITIES			
Item	No.	Weight (Each) Lbs.	Weight (Total) Lbs.
Sole Plate	20	162.0	3,240
Masonry Plate	20	391.4	7,829
Stub Anchor Bolt	40	7.1	--
Swedged Anchor Bolt	40	22.3	--
ASTM A709 Gr. 50W Structural Steel TOTAL			11,069

This item includes 1" grout pad and the weight of the masonry plate, sole plate, nuts and bolts. All parts of the bearing device with the exception of the anchor bolts shall be ASTM A709 Gr. 50W structural steel. The anchor bolts shall conform to the latest 2007 Kansas Department of Transportation Standard Specifications. The nuts for the anchor bolts shall be "Heavy Hex Semi-Finished Nuts".

PLOTED: Thursday, October 11, 2012 @ 10:48AM

BROADWAY BRIDGE AT 34TH STREET SOUTH

BRIDGE BEARING DETAILS
SHEET TITLE
472-84830
PROJECT NUMBER

JAG
DESIGN BY
DPG
DRAWN BY
KJS
CHECKED BY

ISSUED
October 9, 2012
REVISED

SHEET NO.
86 of 212