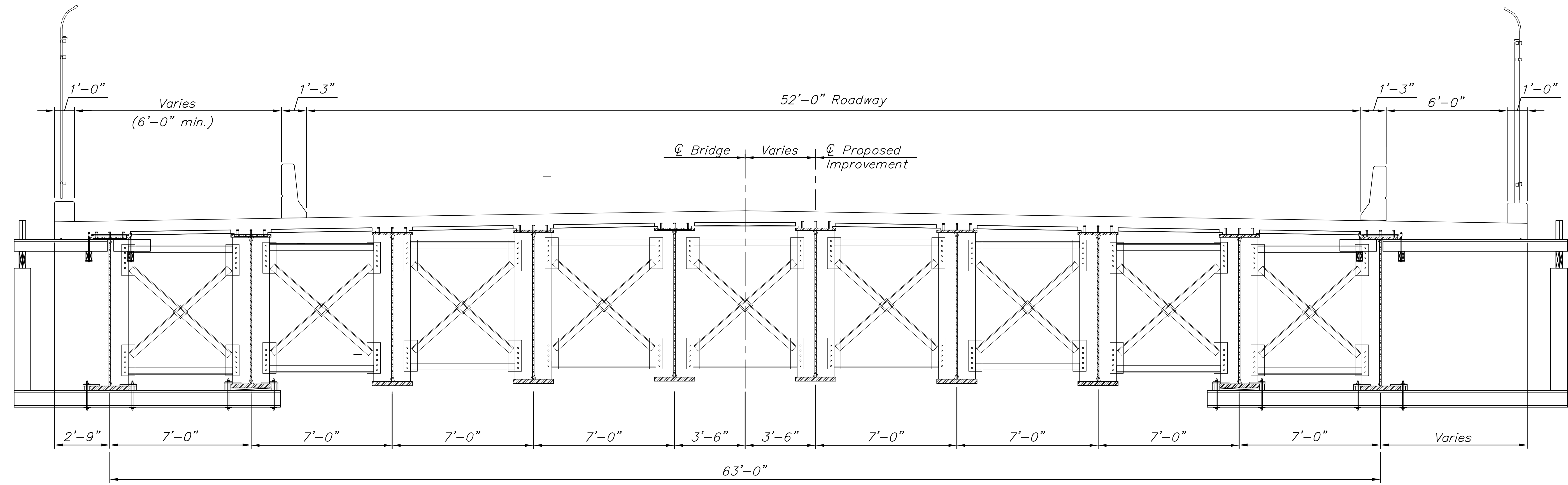
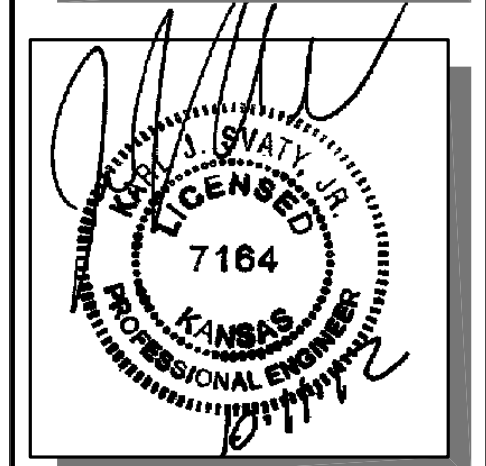
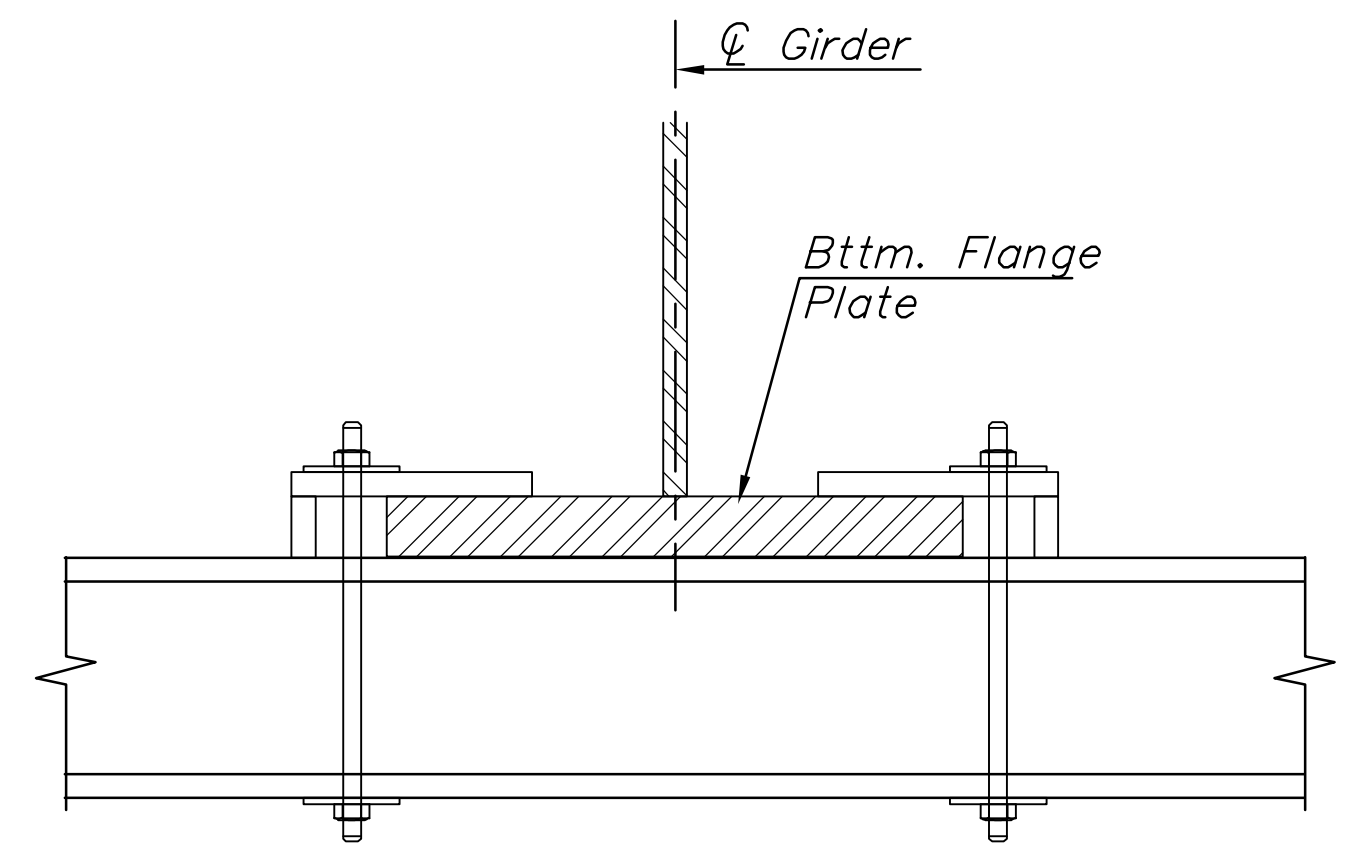


STATE	PROJECT NO.	YEAR	SHEET NO.	TOTAL SHEETS
KANSAS	87 N-0519-01	2012	94	212

MKEC
ENGINEERING
CONSULTANTS, INC.
411 N. WEBB ROAD
WICHITA, K.S. 67206
316-684-9600



FALSEWORK SUPPORT OF OVERHANGS WITH NEEDLE BEAMS



NEEDLE BEAM CONNECTION

NOTES:

Needle Beam Falsework will be required on this project.

The Contractor shall submit detailed plans for falsework for examination by the Engineer. The falsework plans shall be sealed by a Professional Engineer licensed in the state of Kansas. If such plans are not satisfactory to the Engineer, the Contractor shall make such changes in them as may be required, but it is understood that the Engineer's concurrence in the use of the plans as submitted or corrected shall in no way relieve the Contractor of responsibility for obtaining satisfactory results.

For continuous concrete slab and girder bridges, falsework and forms shall be provided for the full length of each continuous unit and the full width of the structure.

For calculating the strength of falsework, a weight of 150 lbs per cu. ft. shall be assumed for the concrete. The design of the falsework shall take into account the weight of the concrete and also other loads incidental to the construction operations. All falsework shall be designed and constructed to provide the necessary rigidity and to support the imposed loads without appreciable settlement or deformation. The Contractor shall make allowance for the deflection of forms and for shrinkage and settlement of falsework, in addition to the allowance for the amount of dead load deflection and camber shown on the plans. A method satisfactory to the Engineer shall be used to detect any settlement that may occur during the placing of the concrete.

PLOTTED: Thursday, October 11, 2012 @ 10:49AM

J:\Civil\09081.dwg\BRIDGE\09081 FALSEWORK

**BROADWAY BRIDGE
AT 34TH STREET SOUTH**

**BRIDGE
FALSEWORK
DETAILS**
SHEET TITLE
472-84830
PROJECT NUMBER

DESIGN BY: KJS
DRAWN BY: DMU
CHECKED BY: KJS

ISSUED: October 9, 2012
REVISED:

SHEET NO.
94 of 212