

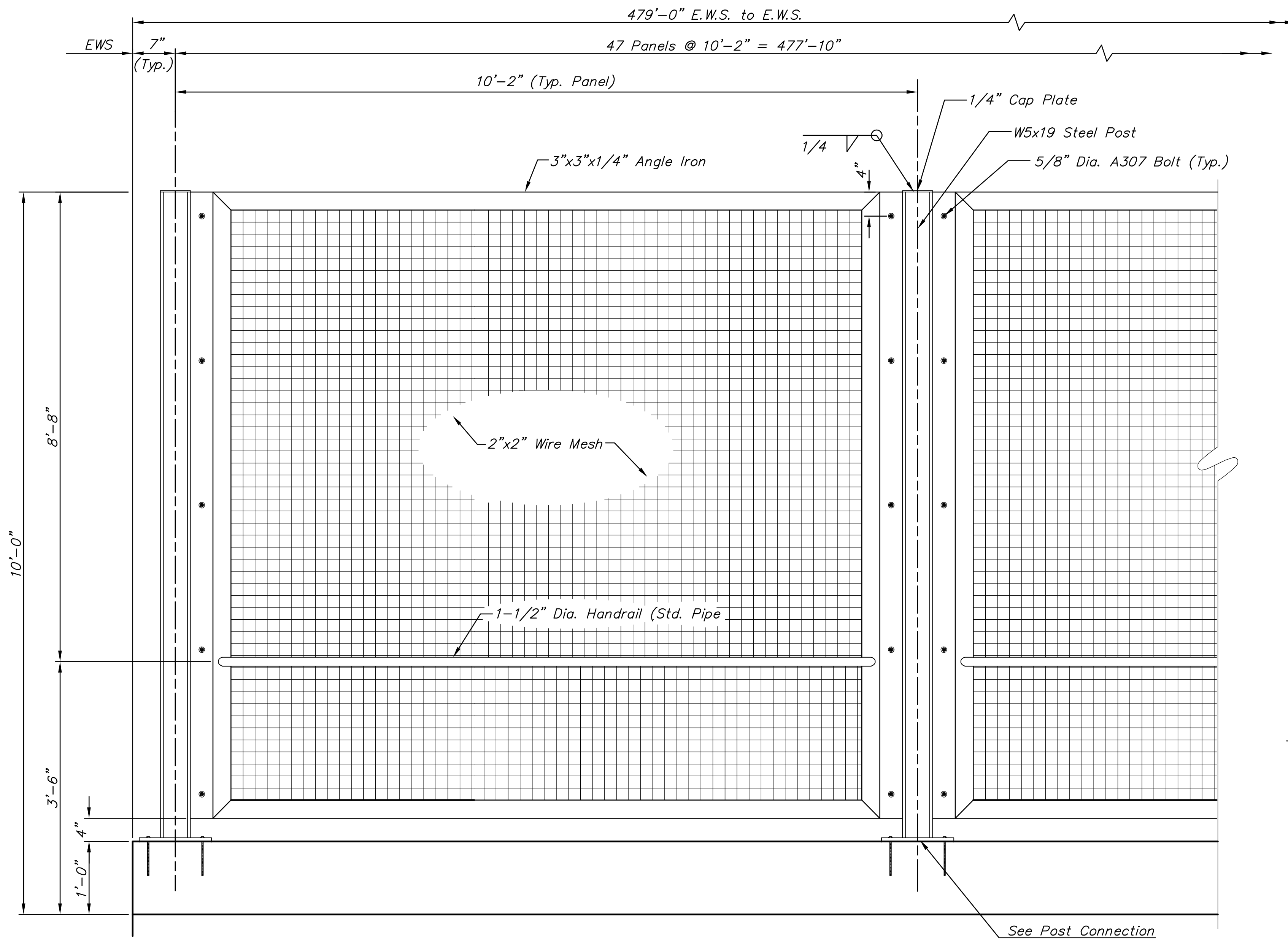
STATE	PROJECT NO.	YEAR	SHEET NO.	TOTAL SHEETS
KANSAS	87 N-0519-01	2012	97	212

MKEC
ENGINEERING
CONSULTANTS, INC.

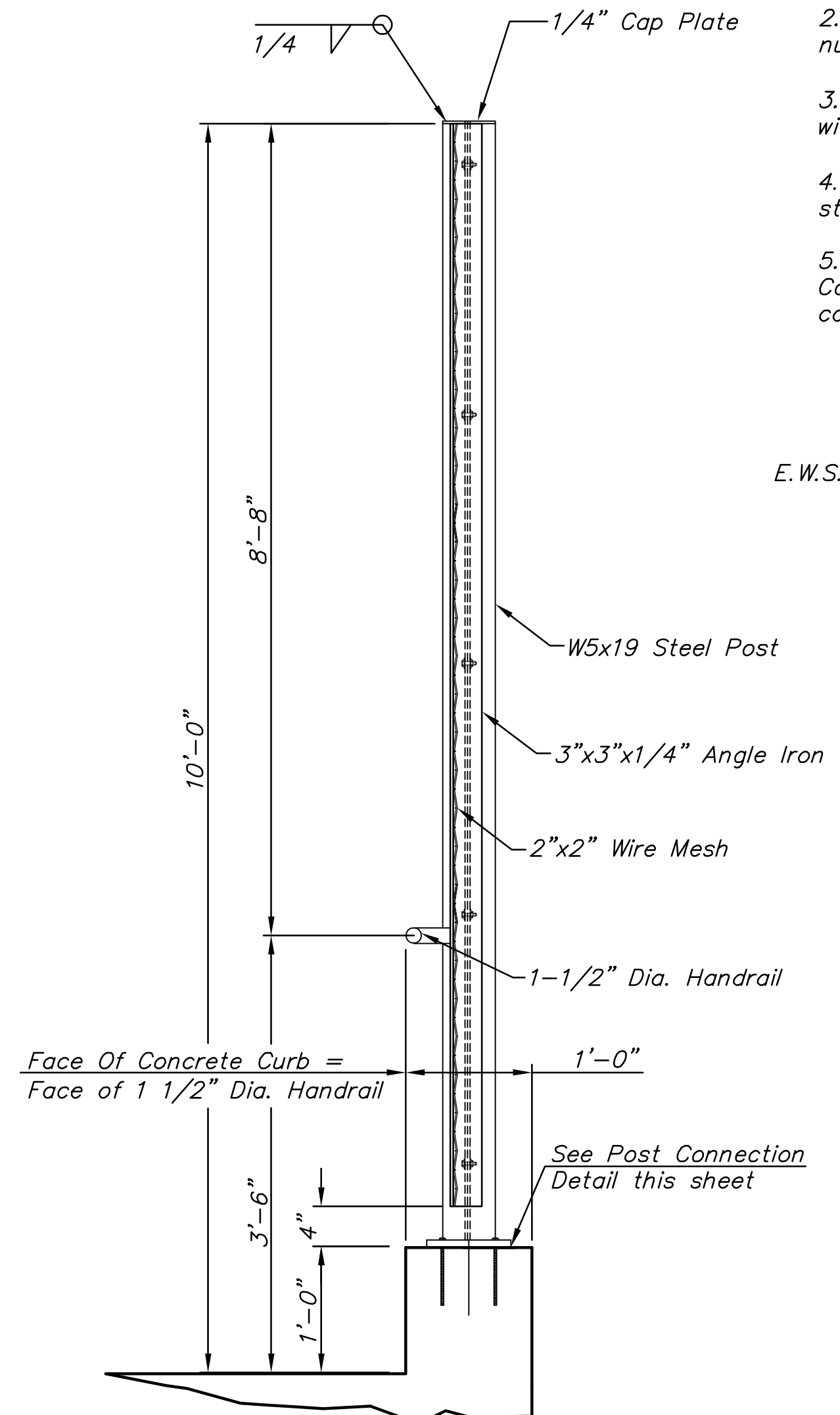
411 N. WEBB ROAD
WICHITA, K.S. 67206
316-684-9600

DESIGN DATA:

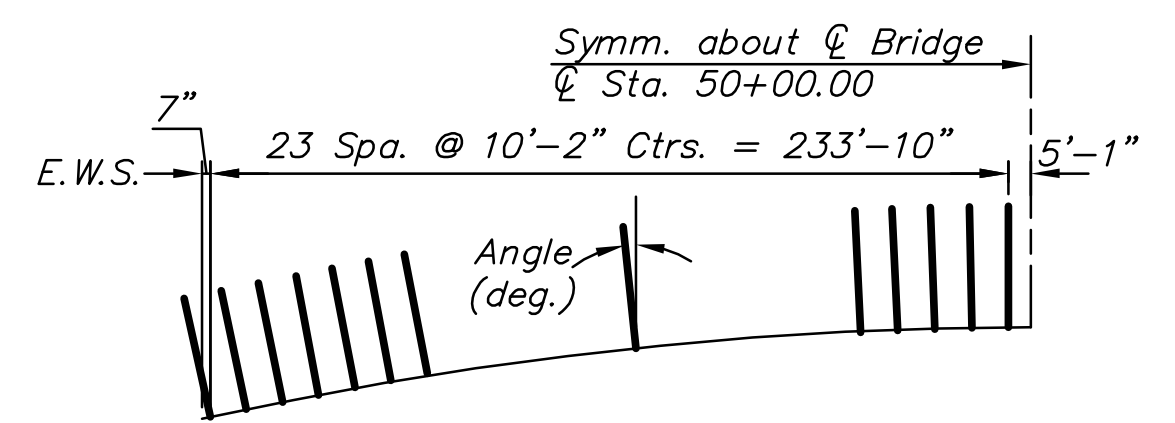
- All steel shall conform to ASTM A709, Gr. 50 or equivalent.
- Structural Bolts shall conform to ASTM A307 with nuts and washers over the long-slot hole.
- Anchor bolts shall be 5/8" Dia. Adhesive Anchors with a working tension capacity of 7,300 lbs.
- Wire Mesh shall be 2"x2" centers, 1/8" dia. mild steel GalFan wire.
- Paint shall be two coat paint system by Themec. Color palette shall be submitted to City for actual color selection.



ELEVATION

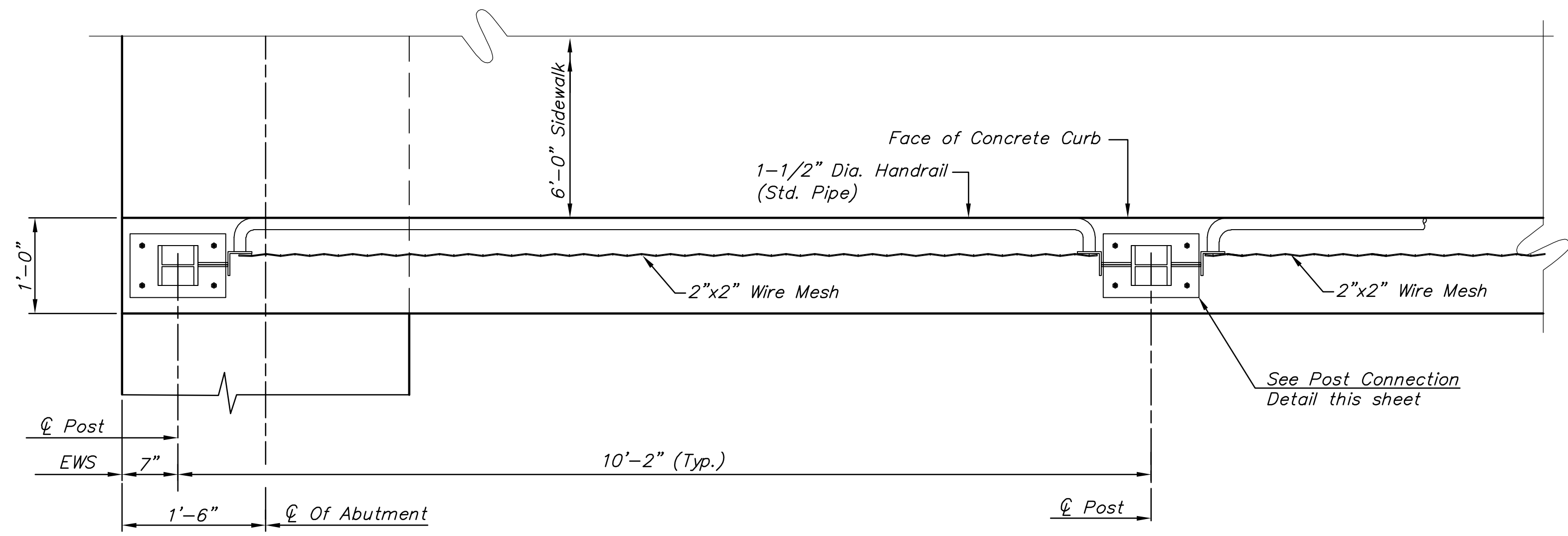


TYPICAL SECTION AT POST

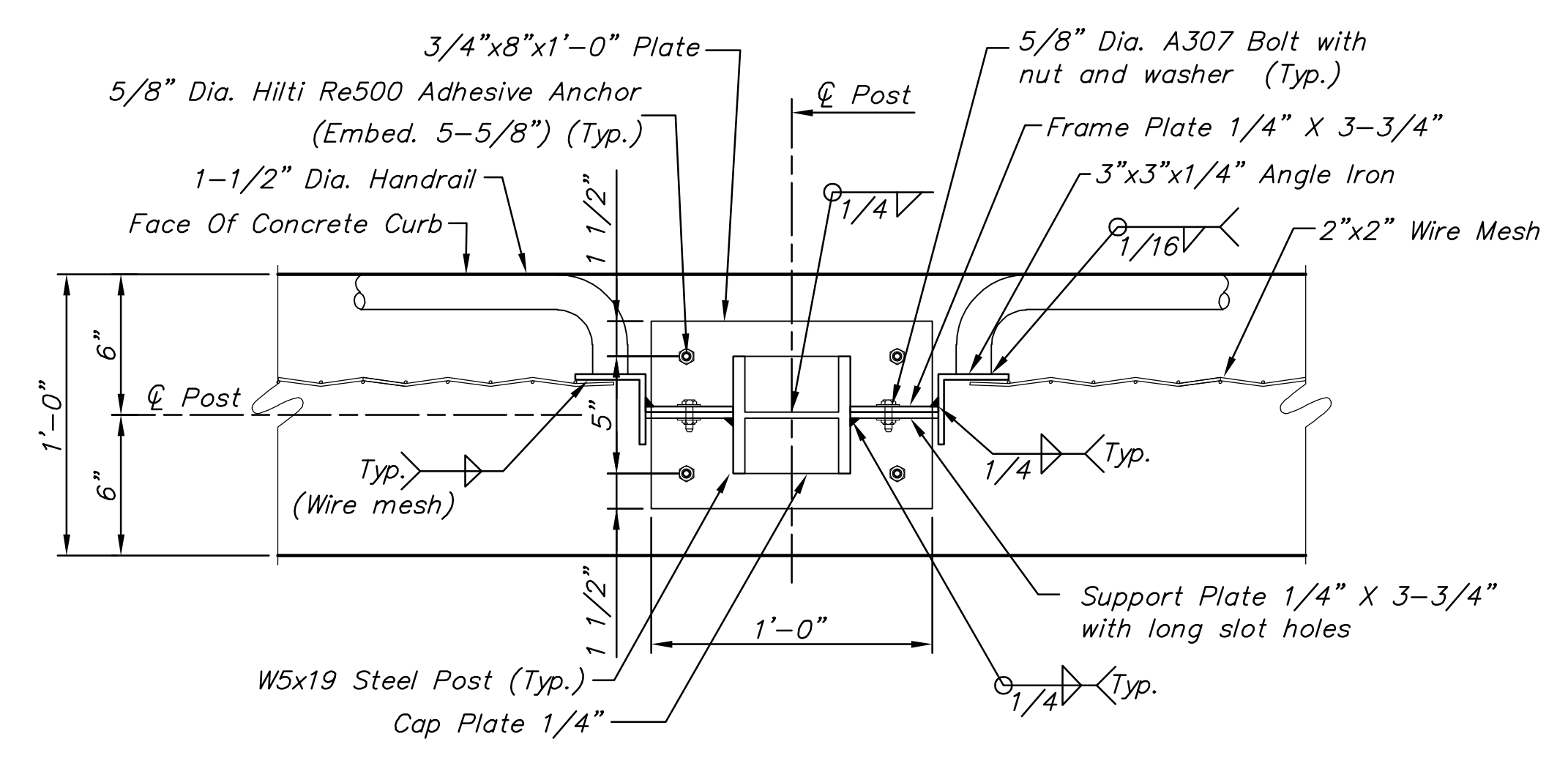


VERTICAL POST ANGLE DIAGRAM

Angle to install posts for RR ped fence (perpen to deck)			
#LOCATION	DISTANCE	ANGLE (deg.)	SLOPE (%)
0.5	5.083	0.047	0.000822
1.5	15.250	0.141	0.002465
2.5	25.417	0.235	0.004109
3.5	35.583	0.330	0.005753
4.5	45.750	0.424	0.007396
5.5	55.917	0.518	0.009040
6.5	66.083	0.612	0.010683
7.5	76.250	0.706	0.012327
8.5	86.417	0.800	0.013971
9.5	96.583	0.895	0.015614
10.5	106.750	0.989	0.017258
11.5	116.917	1.083	0.018902
12.5	127.083	1.177	0.020545
13.5	137.250	1.271	0.022189
14.5	147.417	1.365	0.023832
15.5	157.583	1.460	0.025476
16.5	167.750	1.554	0.027120
17.5	177.917	1.648	0.028763
18.5	188.083	1.742	0.030407
19.5	198.250	1.836	0.032050
20.5	208.417	1.931	0.033694
21.5	218.583	2.025	0.035338
22.5	228.750	2.119	0.036981
23.5	238.917	2.213	0.038625



PLAN



POST CONNECTION DETAIL

**BROADWAY BRIDGE
AT 34TH STREET SOUTH**

**BRIDGE
FENCE
DETAIL**

SHEET TITLE
472-84830

PROJECT NUMBER

DESIGN BY
KJS

DRAWN BY
DPG

CHECKED BY
JAG

ISSUED
October 9, 2012

REVISED

SHEET NO.
97 of 212

PLOTED: Thursday, October 11, 2012 @ 10:58AM

J:\Civil\09081.dwg\BRIDGE\09081_FENCE