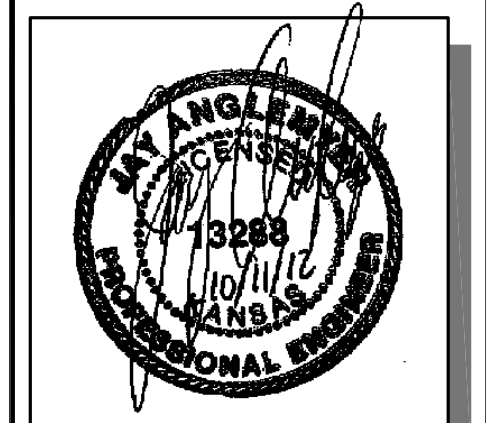


STATE	PROJECT NO.	YEAR	SHEET NO.	TOTAL SHEETS
KANSAS	87 N-0519-01	2012	106	212

MKEC
ENGINEERING
CONSULTANTS, INC.
411 N. WEBB ROAD
WICHITA, K.S. 67206
316-684-9600



BROADWAY BRIDGE AT 34TH STREET SOUTH

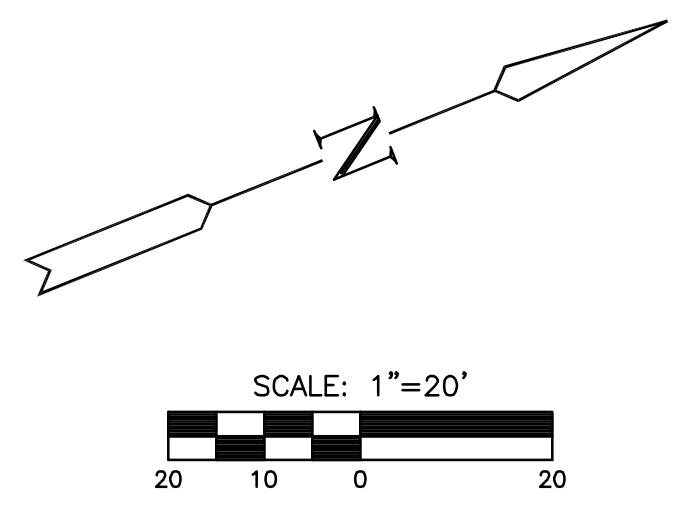
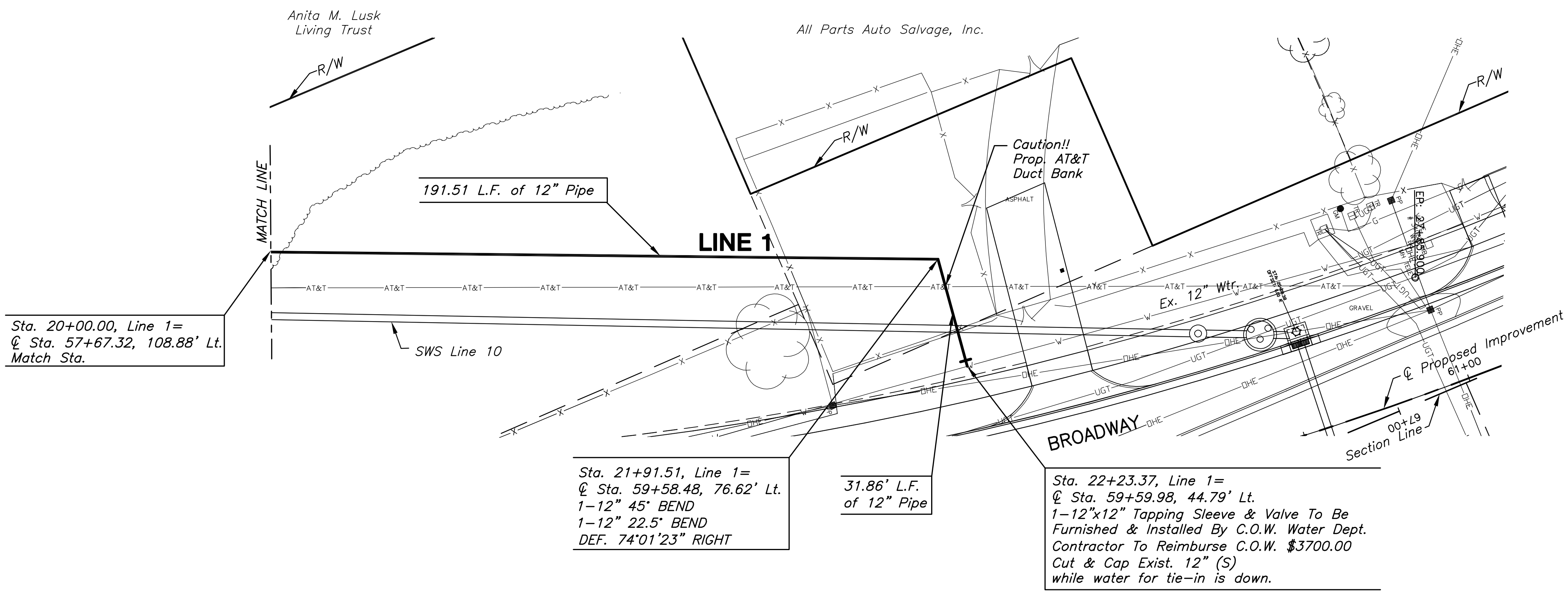
**WATER
LINE 1**
SHEET TITLE
472-84830
PROJECT NUMBER

DESIGN BY: JRA
DRAWN BY: BKS
CHECKED BY: JRA

ISSUED: October 9, 2012
REVISED:

SHEET NO.
106 of 212

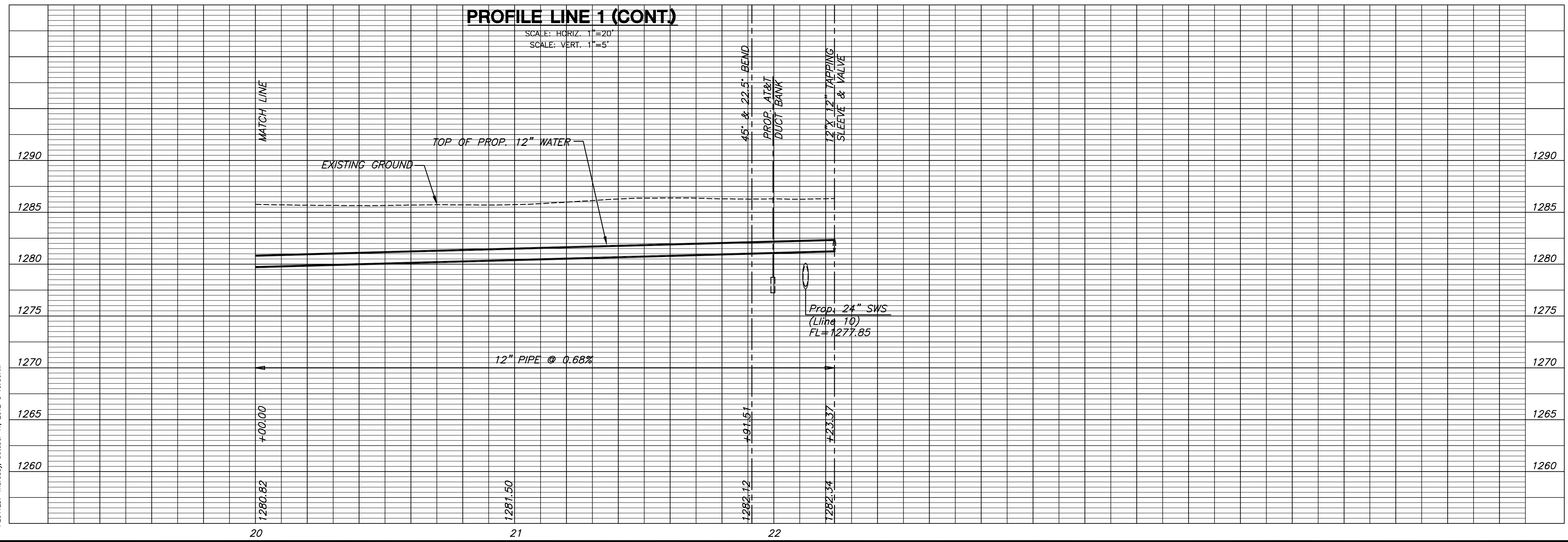
NE 1/4, Sec. 8, T28S, R1E



NOTES:
WATER LINE VALVES TO BE OPERATED
BY CONTRACTOR ONLY IF WATER
INSPECTOR IS ON SITE.

CONTRACTOR TO VERIFY DEPTH AND
LOCATION OF EXISTING UTILITIES PRIOR
TO CONSTRUCTION.

**PLAN LINE 1 (CONT.)
PROFILE LINE 1 (CONT.)**



PLOTED: Thursday, October 11, 2012 @ 10:59AM

J:\Civil\09081\dwg\WTR\09081-C3