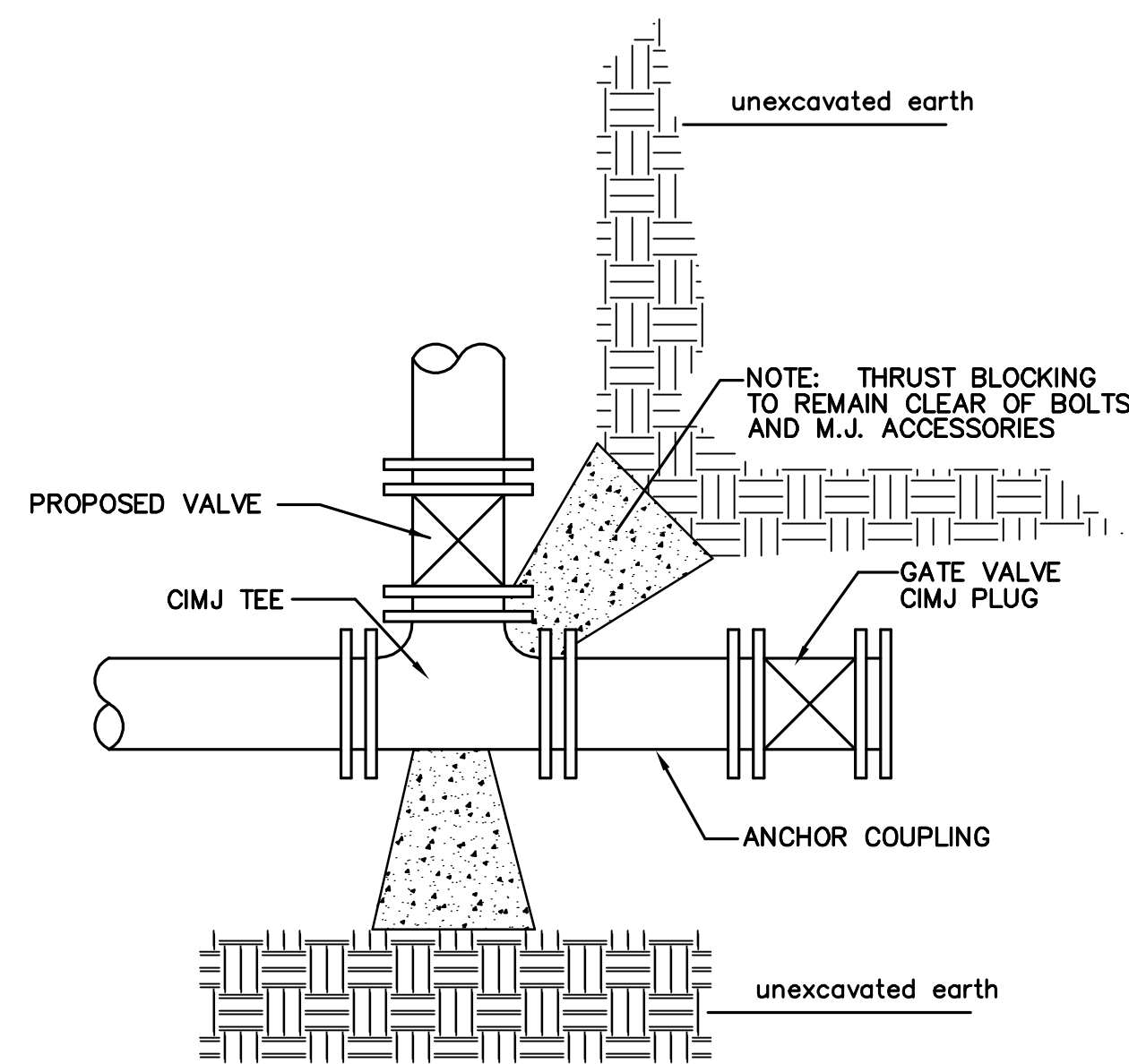


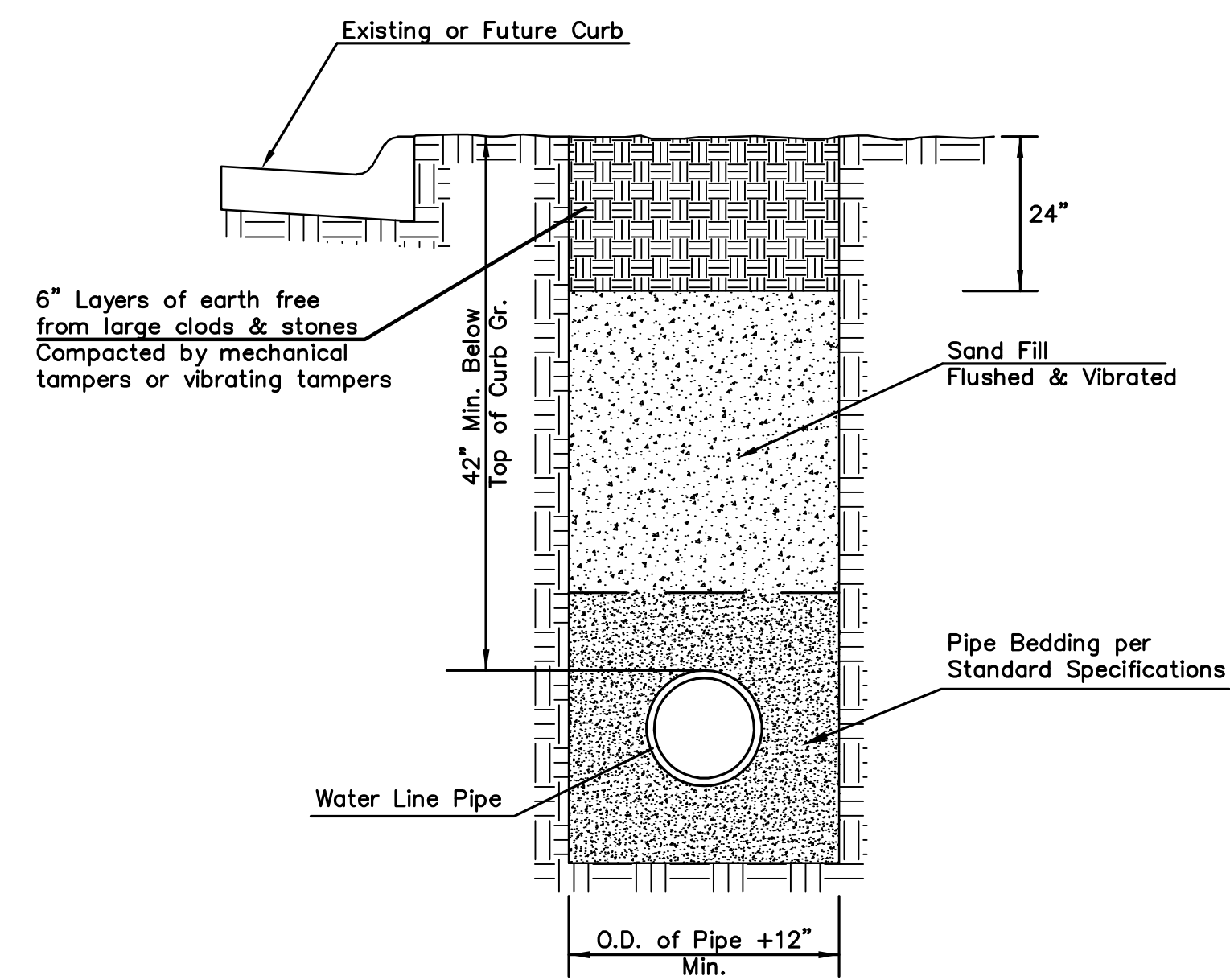
PIPE SIZE	THRUST AT FITTINGS IN TONS—AT 150#/IN P						
	PLUG	90°	45°	22 1/2°	11 1/4°	TEE	
6"	2.8	3.95	2.15	1.09	.55	2.8	
8"	4.9	6.95	3.75	1.90	.96	4.9	
12"	11.4	16.1	8.75	4.45	2.25	11.4	
16"	20.15	28.5	15.4	7.85	3.95	20.15	
20"	31.15	44.0	23.85	12.15	6.10	31.15	
24"	44.55	63.0	34.1	17.4	8.75	44.55	

TYPICAL THRUST BLOCKS

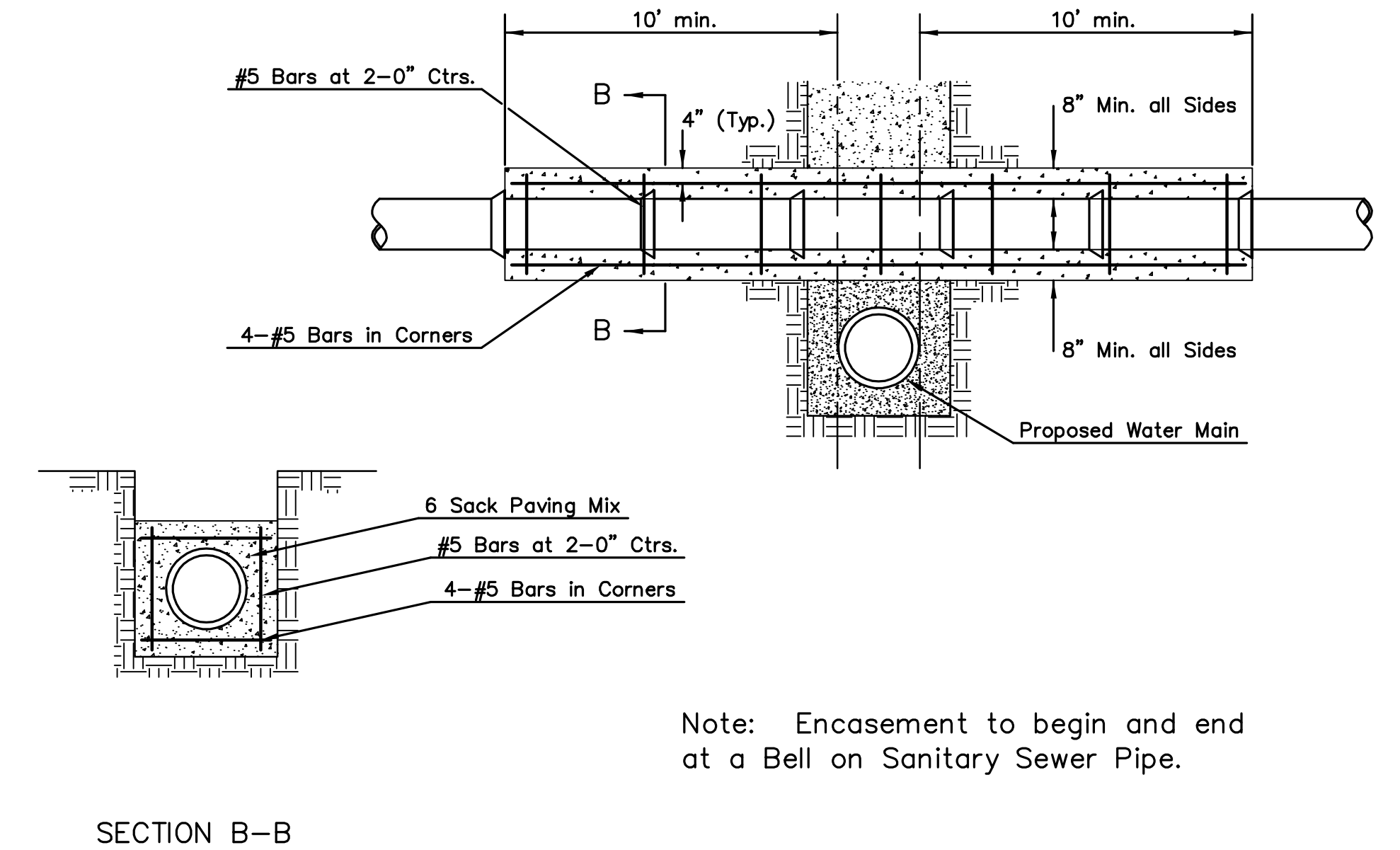
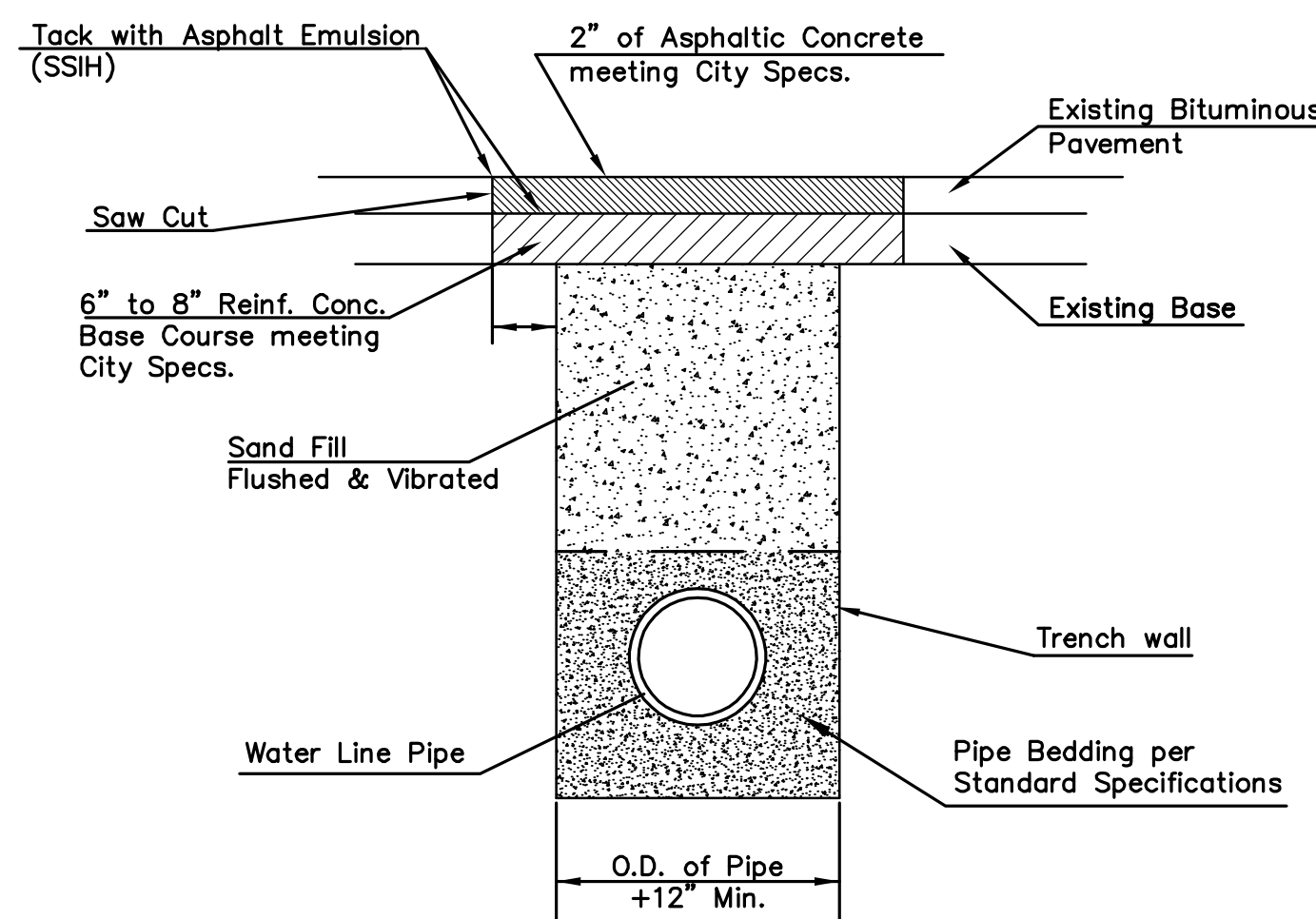


KEY BLOCK DETAIL

TRENCH COMPACTION IN ROAD RIGHT-OF-WAY



PAVEMENT REPLACEMENT & TRENCH COMPACTION UNDER EXISTING AND PROPOSED CITY ROADS UNLESS OTHERWISE NOTED ON PLANS



REINFORCED CONCRETE ENCASEMENT OF SANITARY SEWER

<p>CITY OF WICHITA</p> <p>PUBLIC WORKS &amp; UTILITIES ENGINEERING DIVISION</p>	<p>MISCELLANEOUS WATER DETAILS</p> <p>INTERIM CITY ENGINEER</p> <p><b>GARY JANZEN, P.E.</b></p>		
	PROJECT NUMBER	OCA NUMBER	DATE
	472-84830	636266	08/2012
	<p>CITY ENGINEER'S OFFICE</p> <p>CITY HALL - SEVENTH FLOOR</p> <p>455 NORTH MAIN STREET</p> <p>WICHITA, KANSAS 67202-1620</p> <p>(316) 268-4501</p>		
DESIGN		DRAWN	
SHEET		112 of 212	
<p>WL-104</p>			