

| STATE | PROJECT NO. | YEAR | SHEET NO. | TOTAL SHEETS |
|--------|--------------|------|-----------|--------------|
| KANSAS | 87 N-0519-01 | 2012 | 210 | 212 |

MKEC
ENGINEERING
CONSULTANTS, INC.
411 N. WEBB ROAD
WICHITA, K.S. 67206
316-684-9600



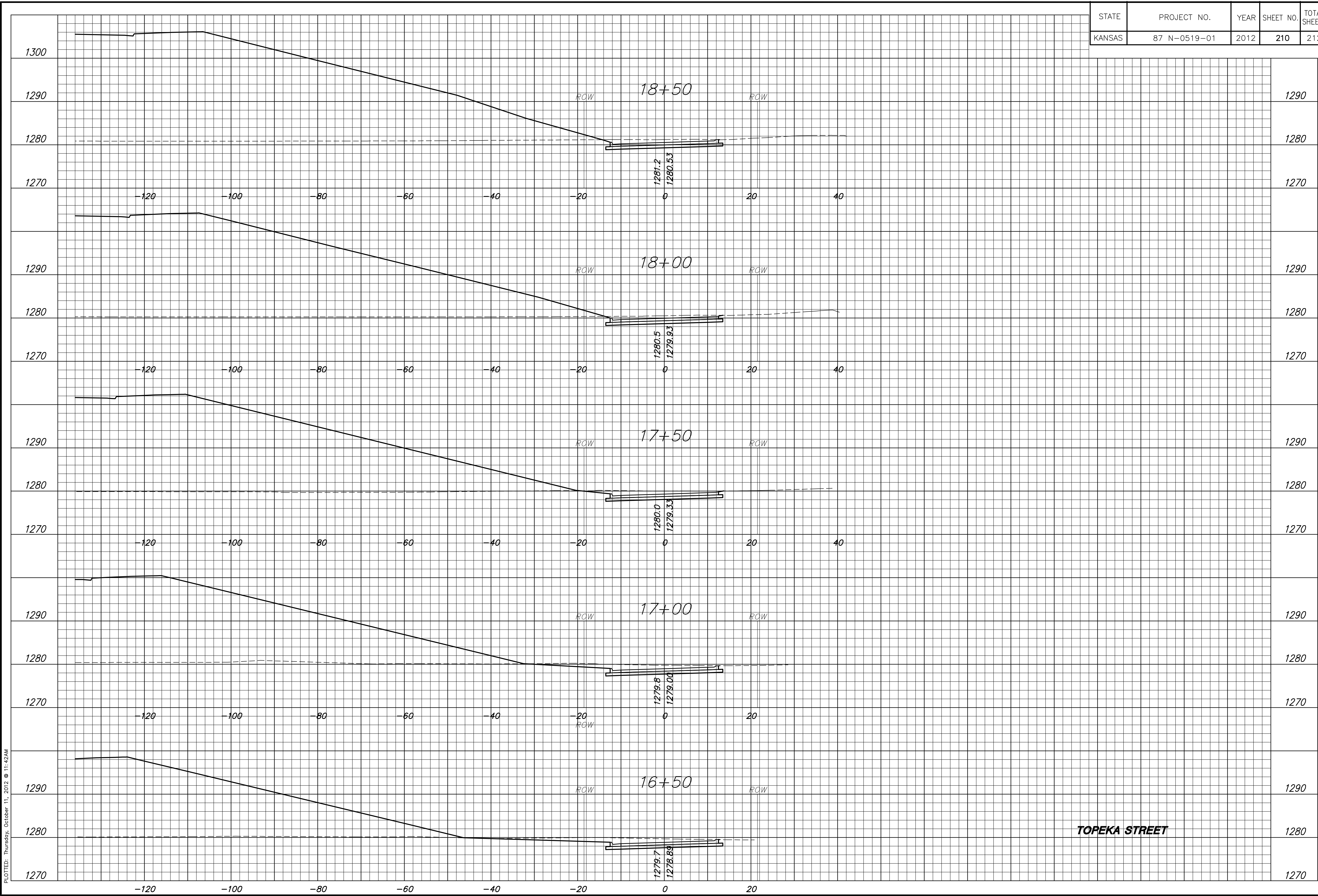
BROADWAY BRIDGE AT 34TH STREET SOUTH

**CROSS SECTIONS
TOPEKA STREET
STA. 16+50.00 TO
STA. 18+50.00**
SHEET TITLE
472-84830
PROJECT NUMBER

DESIGN BY: JRA
DRAWN BY: WNJ
CHECKED BY: JRA

ISSUED: October 9, 2012
REVISED:

SHEET NO.
210 of 212



TOPEKA STREET

PLOTTED: Thursday, October 11, 2012 @ 11:42AM

J:\Civil\09081\dwg\XSEC\09081XS43