

GENERAL NOTES:

1. Contractor will be required to provide notice to utility companies a minimum of twenty-four (24) hours prior to any excavation, as follows:

Kansas One-Call (316)687-2470

The Contractor must notify the following in case of an emergency:

Cox Communications (316)262-4270
or (316)263-2061

Westar Energy/ (800)482-4950
Kansas Gas & Electric Company 1-555-1212
AT&T (316)268-4908
City of Wichita Water Department (316)268-4071
City of Wichita Sewer Department (316)941-1608
Aquila Natural Gas (800)303-0357
or

2. Exist. utilities and their locations, as shown on the plans, represent the best information attainable for design. Location information has been obtained from the various utility companies and is either from company record drawings or company-provided field locations. The Contractor will be required to work around existing utilities which do not conflict with proposed constructions.

3. The Contractor to verify utility locations prior to construction of this project.

4. Utility service and installation shall be coordinated with the respective utility owner. Contacts are:

Kansas Gas Service Jim Coe (316)832-3126
Westar Energy Miles Capps (316)261-6251
Aquila Networks Calvin Briggs (316)942-8811
Wichita Water & Sewer Kerry Gibson (316)268-4555
AT&T Jim Toben (316)268-2759
Cox Communications Mark Anaya (316)262-4270

5. All lawn/turf areas disturbed by construction of proposed improvements shall be restored with the same grass as existing. Restoration of disturbed areas shall include, but not limited to, soil preparation, fertilizing, seeding, mulching (all seeded areas, outside the limits of erosion mat placement), and/or reseeding, and installation of erosion control mat. All seeding work shall be in accordance with the City of Wichita Standard Specifications and the City of Wichita Administrative Regulations No. AR 6.5 which governs cleanup and respiration or replacement following construction. All cost for the soil preparation, seeding and mulching (all seeded areas, outside the limits of erosion mat placement) shall be paid for through the lump sum bid item for "Seeding." All seeded areas within eight feet of the back of new curb shall be covered with an approved erosion mat, which shall be paid for by the measured quantity bid item "Back of Curb Protection (8' wide)."

6. Traffic affected by the construction of this project shall be handled in accordance with the latest edition of the Manual on Uniform Traffic Control Devices.

7. It is the contractor's responsibility to visit this site to better understand the extent of site clearing and restoration to be performed. Site Clearing and Restoration shall include all costs for removal of items which a pay item is not provided.

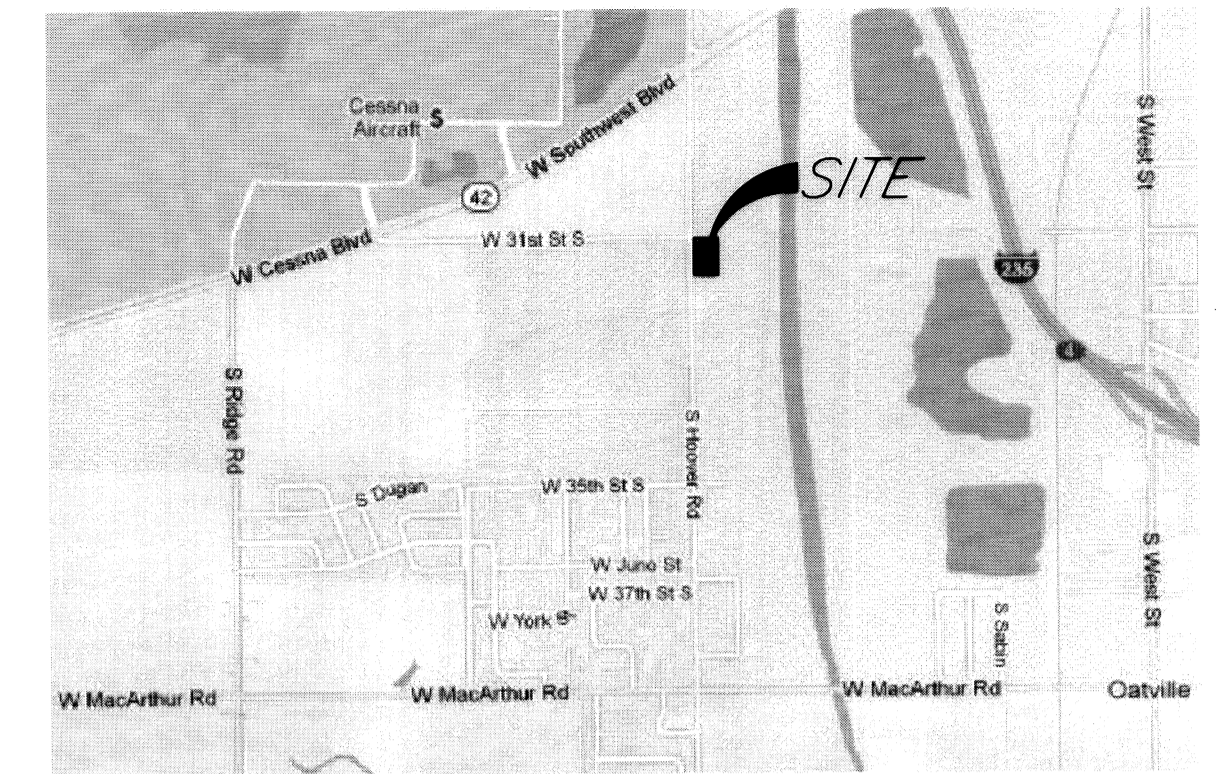
8. The contractor shall be responsible for preserving property irons. The contractor will be required to re-establish any property irons which are damaged or destroyed by the construction operations. Such irons shall be re-established by a licensed land surveyor in accordance with state laws.

9. Properties within the project limits may have underground sprinkler systems in public right-of-way which conflict with new construction. Contractor will be required to remove such improvements should they not be removed by their owner at the time of construction of the project. The contractor will be required to salvage all sprinkler heads and/or valves and give such material to owner. Portions of underground sprinkler systems not in conflict with new construction shall be protected from damage and shall remain in place. All work in connection with underground sprinkler systems shall be considered as subsidiary to the contract pay items for work.

10. Cuts made in paved surfaces on public property will be repaired by the City's Contractor and charged against the contractor. Unit Repair prices are available from the city at 268-4418. A surcharge may be applicable. Call 268-4418 for details. Repair costs to be paid prior to release of utility service if utilities are effected.

Tap 123' South of
Cl of curb inlet
East side of
Hoover
Water main is 16"
Transite 17' East of
curb and 5.5' deep
Tapping valve 18"
East of curb 3'
deep
ugt 21' back of
curb 3' deep
90deg. bend 5'
North of building
Long sleeve 3'
East of Tapping
valve

WATER LINE TO SERVE OAKLEAF DIVERSIFIED, LLC. 3258 S. HOOVER ROAD 1668 PPW (607853) CITY OF WICHITA, KANSAS Gary Janzen, P.E., Interim City Engineer



LOCATION MAP
(For Visual Use Only)

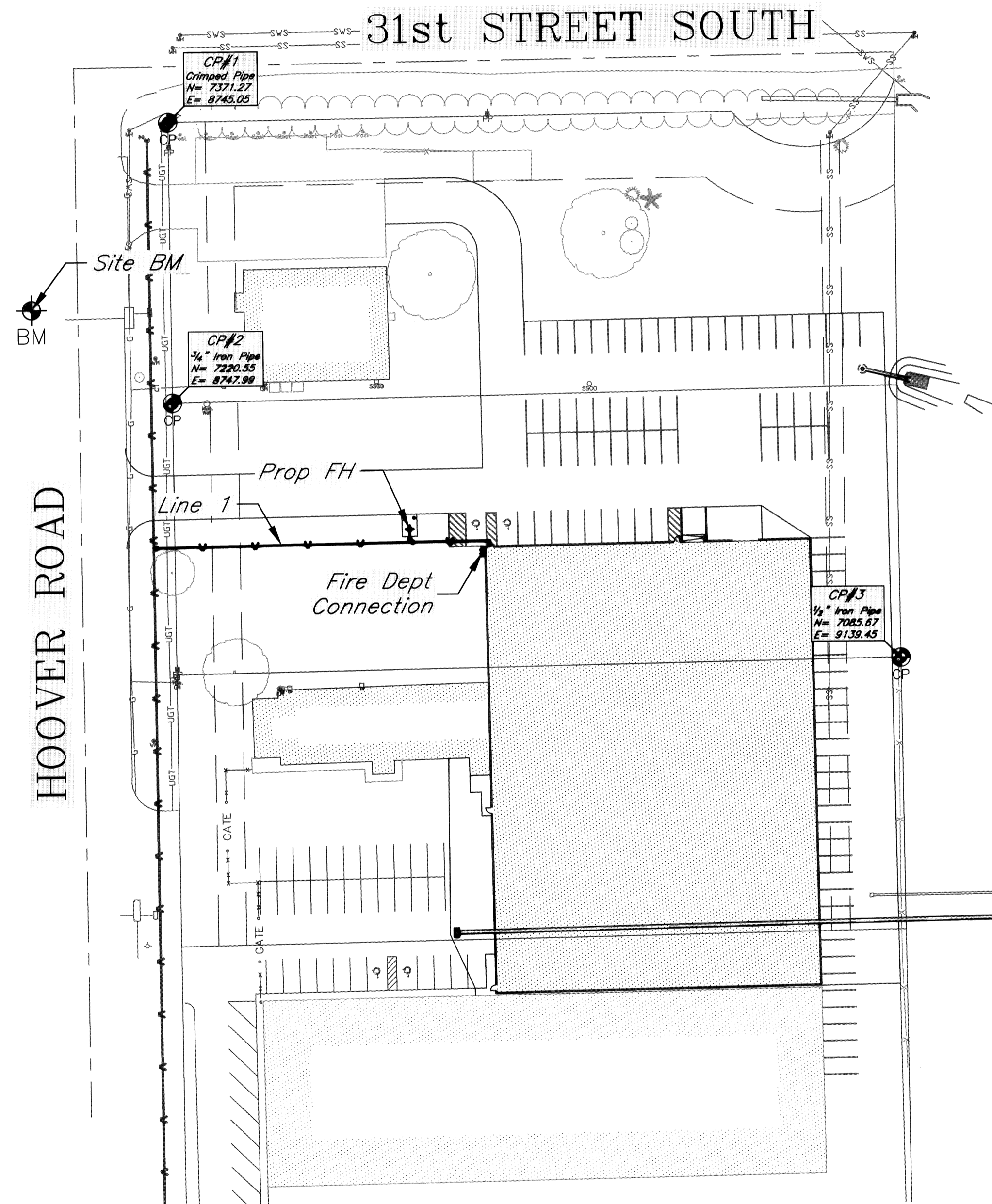
Index of Sheets:

- 1.0 Cover Sheet
- 2.0 Line 1 Plan & Profile
- 3.0 Standard Water Details

Benchmarks:

CITY - Harry & Hoover
COW Benchmark at North end of headwall
on West end of RCBC.
100.00 feet North of Harry.
Elev. = 1302.06 NAVD 88

ON SITE BM
Square Cut on top of curb at North side
of curb inlet West side of Hoover.
Elev. = 1297.10 NAVD 88



AS BUILTS

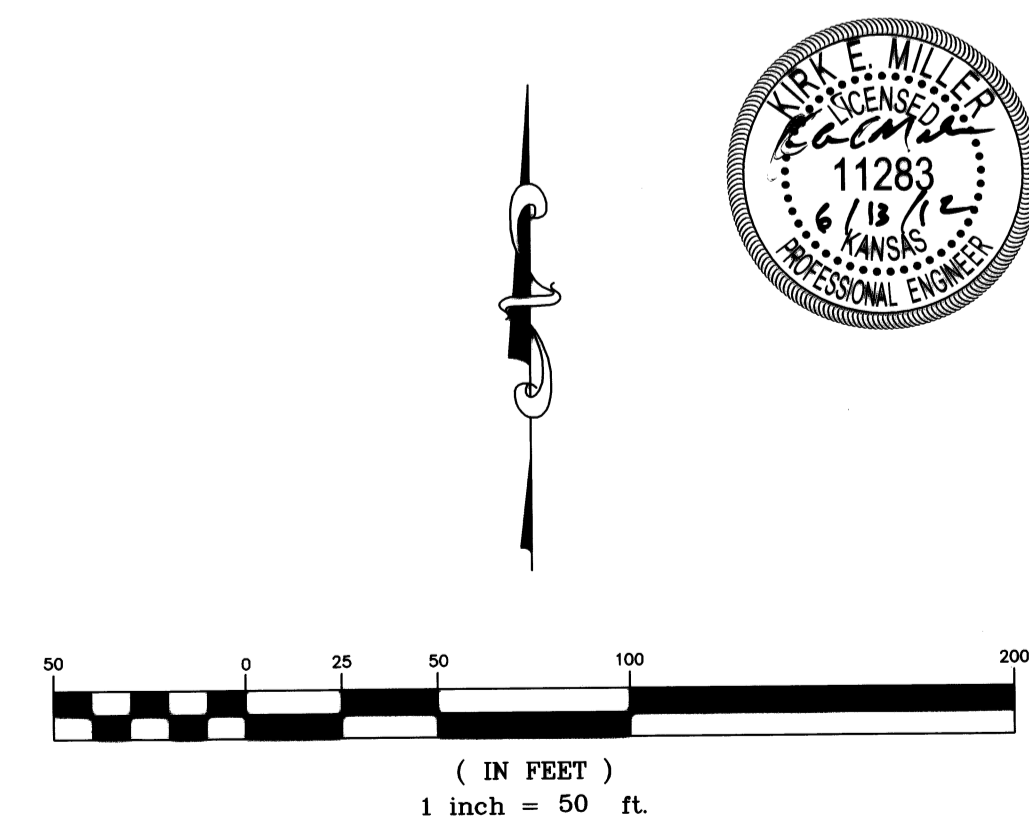
Contractor: Midwest Fire Protection Services 12/03/2012	Project Inspector: Larry Gann kemiller engineering 516 S. Market, Wichita, KS 67202 (316)264-0242
---	--

APPROVED AS NOTED
BY CITY ENGINEER OF WICHITA,
BY WICHITA WATER & SEWER DEPARTMENT,
& BY WICHITA FIRE DEPARTMENT

Public Works *Julianne Kellman 6-13-12*
Water & Sewer *Shag Tully 6-13-12*
Fire *Paul ... 6-15-2012*

NOTE TO CONTRACTORS
Public Property:
Inspection and testing for the waterline is to be provided by a Licensed Consulting Engineering Firm under contract with the Owner/Developer. Said inspection to be in accordance with the City of Wichita standard construction engineering practices and certified by a Professional Engineer Licensed in the state of Kansas. No work shall be performed in dedicated easements or public right-of-way by the Contractor without such inspection nor shall any work be commenced without written authorization by the City Engineer. All Construction and Materials shall comply with the City or Wichita Specifications and Standards (on file and available in the City Engineer's Office).

Private Property:
Installation and testing for the fire protection line is to be performed by a City of Wichita licensed fire protection contractor in accordance with the fire codes as adopted by the City of Wichita. All material and construction practices for the fire protection line shall comply with the fire codes as adopted by the City of Wichita (available from the City of Wichita Fire Department). The Contractor shall not commence work without notification and approval of the Wichita Fire Department. Inspection of the fire protection line is to be provided by a licensed Engineering Firm under contract with the Owner/Developer and the Fire Department. The contractor shall not start work until the project inspector is assigned to the project and present on the site. Any work done without inspection will be required to be uncovered for inspection.



May 2012

kemiller engineering

516 S. Market, Wichita, KS 67202 (316)264-0242