

# SITE 2

Install 888 lf of 8" Cured-in-Place Liner from MH 5747-452 to MH 5747-448

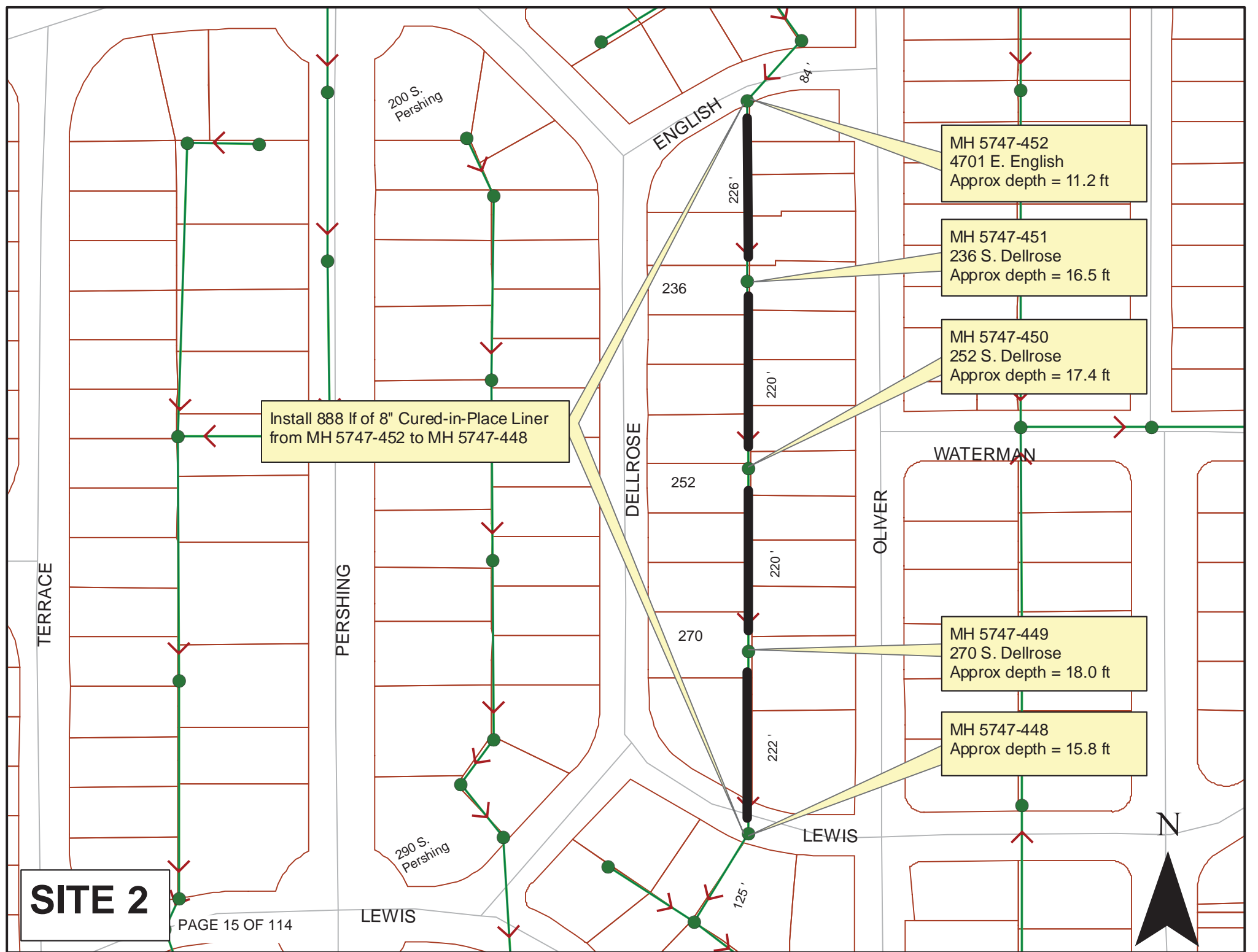
MH 5747-452  
4701 E. English  
Approx depth = 11.2 ft

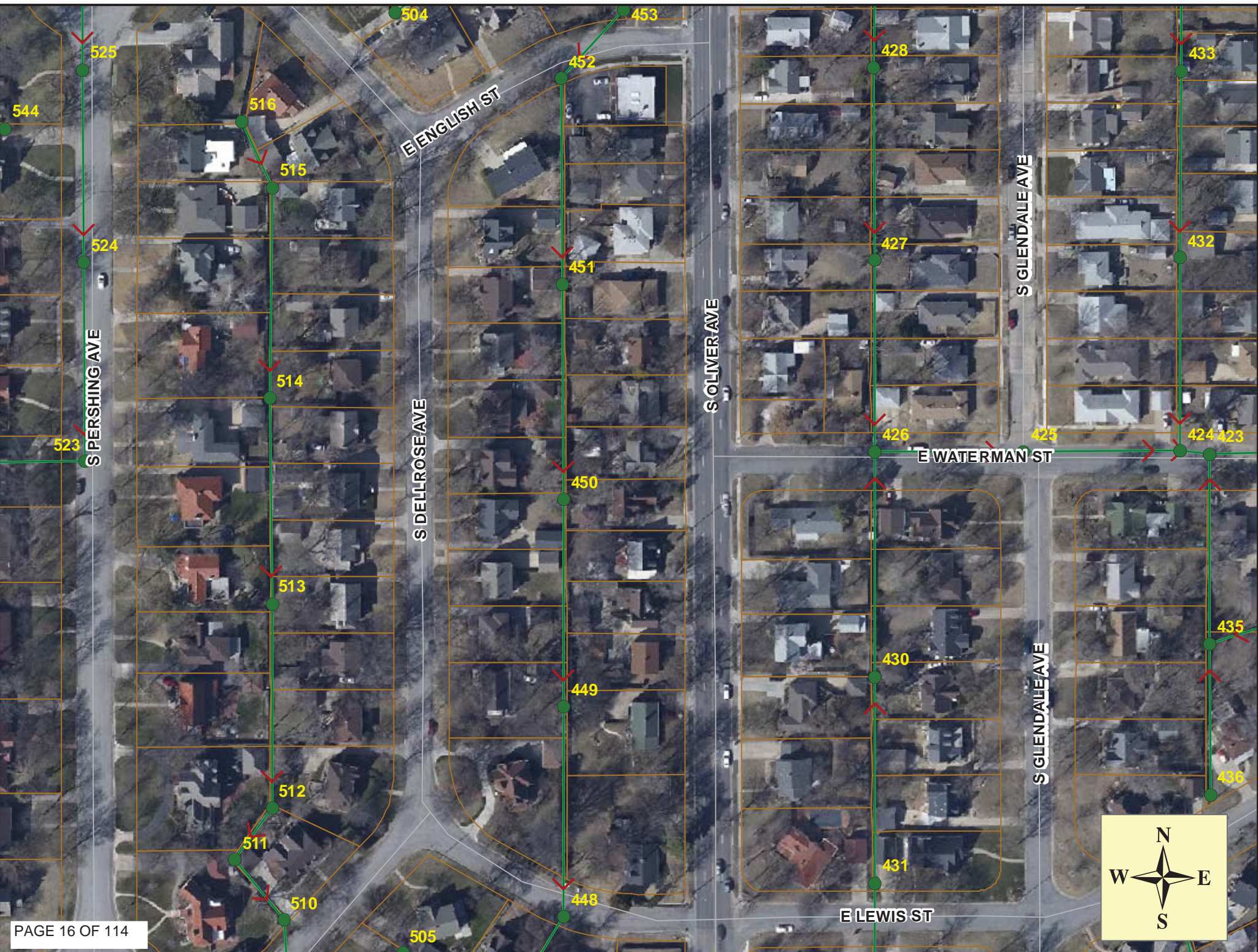
MH 5747-451  
236 S. Dellrose  
Approx depth = 16.5 ft

MH 5747-450  
252 S. Dellrose  
Approx depth = 17.4 ft

MH 5747-449  
270 S. Dellrose  
Approx depth = 18.0 ft

MH 5747-448  
Approx depth = 15.8 ft







# Television Inspection Master Report

5/8/2009  
11:20 AM

US Structure: 5747-452      4701 E ENGLISH ST      Date Insp: 12/14/2007      Basin: E04C  
 DS Structure: 5747-451      236 DELLROSE ST      Dir Televised: Upstream To Downstream

Pipe Information  
 Project No. : C-037      Dia: 8      Material: VCP      length: 225.3      Slope: 0.400      DVD #0348

**Comment:** MANHOLE # 451 HAS INFILTRATION AND MINERAL DEPOSITS  
**Comment:** On this log "scaling" means MINERAL DEPOSITS IN JOINT

Obs. #	VTR	Counter	Distance	Location	Description	Rating	Ratings			
							Obsrvd (gpm)	Est. (gpm)	Struct Clean	Remain (gpm)
1			0.0	US Manhole	5747-452	1	0.000	0	0	0.000
2			12.1	Lower Left	Scaling	3	0.000	10	0	0.000
3			15.8	East	Wye Service / sealed	1	0.000	0	0	0.000
4			19.7	Crown	Scaling	2	0.000	2	0	0.000
5			32.4	Lower Left	Scaling	4	0.000	25	0	0.000
6			33.7	West	Wye Service / sealed	1	0.000	0	0	0.000
7			34.9	Lower Left	Scaling	4	0.000	25	0	0.000
8			36.1	East	Wye Service	1	0.000	0	0	0.000
201 S OLIVER										
					4" Clay Wye Connection					
9			37.7	Lower Left	Scaling	4	0.000	25	0	0.000
10			55.1	Crown	Scaling	3	0.000	10	0	0.000
11			59.0	West	Wye Service / sealed	1	0.000	0	0	0.000
12			60.3	Lower Left	Scaling	3	0.000	10	0	0.000
13			61.5	East	Wye Service	1	0.000	0	0	0.000
14			65.9	Lower Left	Scaling	3	0.000	10	0	0.000
15			68.3	Lower Left	Scaling	3	0.000	10	0	0.000
16			70.8	Lower Left	Scaling	3	0.000	10	0	0.000
17			75.9	Lower Left	Scaling	3	0.000	10	0	0.000
18			78.5	Lower Left	Scaling	3	0.000	10	0	0.000
19			81.0	Lower Left	Scaling	3	0.000	10	0	0.000
20			82.3	West	Wye Service / sealed	1	0.000	0	0	0.000
21			83.6	Lower Left	Scaling	3	0.000	10	0	0.000
22			84.9	East	Wye Service / sealed	1	0.000	0	0	0.000
23			86.1	Lower Left	Scaling	3	0.000	10	0	0.000
24			88.7	Lower Left	Scaling	3	0.000	10	0	0.000
25			93.6	Lower Left	Scaling	3	0.000	10	0	0.000
26			96.1	Lower Left	Scaling	2	0.000	2	0	0.000
27			99.7	East	Break-In Conn	2	0.002	0	0	0.002
205 S OLIVER										
					4" Break In Connection					
28			101.2	Invert	Scaling	4	0.000	25	0	0.000
29			107.4	West	PVC Break-In Conn	2	0.002	0	0	0.002
4701 E ENGLISH										
					4" Predco Saddle / roots around PVC service line / pipe slipped in saddle					



# Television Inspection Master Report

5/8/2009  
11:20 AM

US Structure: 5747-452      4701 E ENGLISH ST      Date Insp: 12/14/2007      Basin: E04C  
 DS Structure: 5747-451      236 DELLROSE ST      Dir Televised: Upstream To Downstream

31	110.2	East	Wye Service / sealed	1	0.000	0	0	0.000
32	115.6	East	Break-In Conn	3	0.004	2	0	0.004
211 S OLIVER				<b>Comment:</b> NEEDS REPAIR				
33	121.4	Lower Left	Scaling	2	0.000	2	0	0.000
34	133.0	West	Wye Service / sealed	1	0.000	0	0	0.000
35	135.4	West	Wye Service / sealed	1	0.000	0	0	0.000
36	136.7	Lower Left	Scaling	3	0.000	10	0	0.000
37	144.3	Upper Right	Scaling	2	0.000	2	0	0.000
38	149.8	Invert	Scaling	3	0.000	10	0	0.000
39	158.1	West	Wye Service / sealed	1	0.000	0	0	0.000
40	160.9	East	Wye Service	1	0.000	0	0	0.000
205 S OLIVER				4" Clay Wye Connection				
41	163.5	West	Break-In Conn	3	0.004	2	0	0.004
210 S DELLROSE				<b>Comment:</b> NEEDS REPAIR				
42	172.2	Upper Left	Scaling	3	0.000	10	0	0.000
43	177.0	Lower Left	Scaling	4	0.000	25	0	0.000
44	186.0	West	Wye Service / sealed	1	0.000	0	0	0.000
45	187.3	Upper Left	Scaling	3	0.000	10	0	0.000
46	188.5	East	Wye Service / sealed	1	0.000	0	0	0.000
47	189.9	Joint	Offset	3	0.010	20	0	0.010
48	205.0	Lower Left	Scaling	3	0.000	10	0	0.000
49	210.0	Joint	Gapped Joint	3	0.010	20	0	0.010
50	212.6	Lower Left	Scaling	3	0.000	10	0	0.000
51	215.3	Lower Left	Scaling	3	0.000	10	0	0.000
52	216.5	West	Wye Service / sealed	1	0.000	0	0	0.000
53	217.9	Lower Left	Scaling	3	0.000	10	0	0.000
54	219.1	East	Wye Service / sealed	1	0.000	0	0	0.000
55	220.9	Upper Right	Crack-Horizontal	3	0.004	5	0	0.004
56	221.9	West	Break-In Conn	2	0.002	0	0	0.002
236 S DELLROSE				4" Break In Connection <b>Comment:</b> NEEDS REPAIR				
57	222.1	Lower Left	Scaling	3	0.000	10	0	0.000
58	224.7		Infiltration	4	0.000	0	0	0.000
59	226.4	DS Manhole	/ mineral deposits on bricks					



# Television Inspection Master Report

5/8/2009  
11:20 AM

US Structure: 5747-451      236      DELLROSE ST      Date Insp: 12/14/2007      Basin: E04C  
 DS Structure: 5747-450      252      DELLROSE ST      Dir Televised:      Upstream To Downstream

**Pipe Information**

Shape: Round      Length Status:      Project No.: C-037  
 Dia/Ht: 8      Material: VCP      Index:      Surface:      DVD #0348  
 Length: 220.2      Slope: 0.001

**Inspection Information**

Crew: 690      Percent Full:      Tape ID:      Counter Start:  
 Weather: Cloudy      Purpose: TV Existing Line

Obs. #	VTR Counter	Distance	Location	Description	Rating	Ratings				
						Obsrvd (gpm)	Est. (gpm)	Struct Clean	Remain (gpm)	
1		0.0	US Manhole 5747-451		1	0.000	0.000	0	0	0.000
2		4.1	Lower Left	Scaling	3	0.000	0.000	10	0	0.000
3		7.0	Upper Right	Scaling	3	0.000	0.000	10	0	0.000
4		9.2	Lower Left	Scaling	2	0.000	0.000	2	0	0.000
5		11.8	Lower Left	Scaling	3	0.000	0.000	10	0	0.000
6		13.1	Lower Left	Scaling	3	0.000	0.000	10	0	0.000
7		16.4	West	Wye Service / sealed	1	0.000	0.000	0	0	0.000
8		18.0	Lower Left	Scaling	3	0.000	0.000	10	0	0.000
9		19.2	East	Wye Service / sealed	1	0.000	0.000	0	0	0.000
10		26.4	East	Break-In Conn	2	0.002	0.002	0	0	0.002
219 S OLIVER										
11		28.1	Lower Left	Scaling	2	0.000	0.000	2	0	0.000
12		40.9	Lower Left	Scaling	2	0.000	0.000	2	0	0.000
13		44.6	West	Wye Service / sealed	1	0.000	0.000	0	0	0.000
14		45.9	Lower Left	Scaling	2	0.000	0.000	2	0	0.000
15		47.2	East	Wye Service / sealed	1	0.000	0.000	0	0	0.000
16		48.5	Lower Left	Scaling	3	0.000	0.000	10	0	0.000
17		51.2	Lower Left	Scaling	2	0.000	0.000	2	0	0.000
18		53.7	Lower Left	Scaling	3	0.000	0.000	10	0	0.000
19		56.1	Lower Left	Scaling	3	0.000	0.000	10	0	0.000
20		58.7	Lower Left	Scaling	3	0.000	0.000	10	0	0.000
21		61.1	Lower Left	Scaling	3	0.000	0.000	10	0	0.000
22		63.8	Lower Left	Scaling	2	0.000	0.000	2	0	0.000
23		66.2	Joint	Offset	2	0.000	0.000	0	0	0.000
24		71.3	Lower Left	Scaling	2	0.000	0.000	2	0	0.000
25		73.9	Lower Left	Scaling	2	0.000	0.000	2	0	0.000
26		75.0	West	Wye Service	1	0.000	0.000	0	0	0.000
240 S DELLROSE										
27		76.3	Lower Left	Scaling	3	0.000	0.000	10	0	0.000



# Television Inspection Master Report

5/8/2009  
11:20 AM

US Structure: 5747-451      236      DELLROSE ST      Date Insp: 12/14/2007      Basin: E04C  
 DS Structure: 5747-450      252      DELLROSE ST      Dir Televised: Upstream To Downstream

28	77.5	East	Wye Service	4	0.000	60	0	0.000	
231 S OLIVER			4" Clay Wye Connection <b>Comment:</b> MINERAL DEPOSITS IN CONN						
29	97.8	East	Break-In Conn	3	0.004	2	0	0.004	
231 S OLIVER			4" Break In Connection <b>Comment:</b> NEEDS REPAIR						
30	102.1	West	Wye Service / sealed off	1	0.000	0	0	0.000	
31	104.4	East	Wye Service / sealed off	1	0.000	0	0	0.000	
246 S DELLROSE			4" Break In Connection <b>Comment:</b> NEEDS REPAIR						
32	120.7	West	Break-In Conn	4	0.008	60	0	0.008	
246 S DELLROSE			4" Break In Connection <b>Comment:</b> NEEDS REPAIR						
33	124.8	West	Wye Service / sealed off	1	0.000	0	0	0.000	
34	127.4	East	Wye Service / sealed off	1	0.000	0	0	0.000	
35	131.2	Lower Left	Scaling	2	0.000	2	0	0.000	
36	136.4	Lower Left	Scaling	3	0.000	10	0	0.000	
37	147.6	West	Wye Service / sealed	1	0.000	0	0	0.000	
38	149.0	Lower Left	Scaling	3	0.000	10	0	0.000	
39	150.2	East	Wye Service / sealed	1	0.000	0	0	0.000	
40	156.5	Upper Right	Scaling	2	0.000	2	0	0.000	
41	170.2	Upper Left	Crack-Horizontal	2	0.002	2	0	0.002	
246 S DELLROSE			Break-In Conn						
42	171.4	East	Break-In Conn	4	0.008	60	0	0.008	
246 S DELLROSE			4" Break In Connection <b>Comment:</b> NEEDS REPAIR						
43	174.9	Upper Left	Crack-Horizontal	3	0.004	5	0	0.004	
44	175.7	West	Wye Service / sealed	1	0.000	0	0	0.000	
45	176.4	Upper Left	Crack-Horizontal	3	0.004	5	0	0.004	
46	177.0	Lower Left	Scaling	3	0.000	10	0	0.000	
47	178.1	East	Wye Service / sealed	1	0.000	0	0	0.000	
48	179.6	Lower Left	Scaling	3	0.000	10	0	0.000	
49	182.3	Lower Left	Scaling	3	0.000	10	0	0.000	
248 S DELLROSE			Break-In Conn						
50	183.0	West	Break-In Conn	3	0.004	2	0	0.004	
248 S DELLROSE			4" Break In Connection <b>Comment:</b> NEEDS REPAIR						
51	184.6	Lower Left	Scaling	3	0.000	10	0	0.000	
52	189.6	Lower Left	Scaling	3	0.000	10	0	0.000	
53	194.6	Joint	Offset	2	0.000	0	0	0.000	
54	201.0	West	Wye Service / sealed	1	0.000	0	0	0.000	
55	204.1	East	Wye Service / sealed	1	0.000	0	0	0.000	
56	204.8	Joint	Offset	3	0.010	20	0	0.010	
57	215.7	Lower Left	Scaling	4	0.000	25	0	0.000	
58	217.1		Scaling	4	0.000	25	0	0.000	
59	220.0	DS Manhole 5747-450	<b>Comment:</b> MINERAL DEPOSITS ON WALLS OF MH						



# Television Inspection Master Report

5/8/2009  
11:20 AM

US Structure: 5747-450      252      DELLROSE ST      Date Insp: 12/14/2007      Basin: E04C  
 DS Structure: 5747-449      270      DELLROSE ST      Dir Televised:      Upstream To Downstream

**Pipe Information**

Shape: Round      Project No.: C-037      Dia: 8      Material: VCP      Length: 219.5      Slope: 0.400

Crew: 690      Tape ID: DVD #0348      Weather: Cloudy      Purpose: TV Existing

Obs. VTR #	Counter	Distance	Location	Description	Rating	Obsrvd (gpm)	Ratings		
							Est. (gpm)	Struct Clean	Remain (gpm)
1		0.0	US Manhole	5747-450	1	0.000	0	0	0.000
2		0.3	Lower Left		3	0.000	10	0	0.000
3		2.8	Lower Left		3	0.000	10	0	0.000
4		5.6	Joint	Offset / needs repair	4	0.030	60	0	0.030
5		6.4	East	Break-In Conn	5	0.010	400	0	0.010
305 S OLIVER					4" Break In Connection <b>Comment:</b> tap in crown and sics crooked to the main				
6		9.4	East	Wye Service / sealed	1	0.000	0	0	0.000
7		18.5	Lower Left	Scaling	3	0.000	10	0	0.000
8		23.4	Lower Left	Scaling	3	0.000	10	0	0.000
9		25.9	Invert	Scaling	2	0.000	2	0	0.000
10		28.8	Lower Left	Scaling	3	0.000	10	0	0.000
11		29.6	West	Break-In Conn	3	0.004	2	0	0.004
252 S Dellrose / needs repair					4" Break In Connection				
12		31.2	Lower Left	Scaling	3	0.000	10	0	0.000
13		32.2	West	Wye Service / sealed	1	0.000	0	0	0.000
14		33.7	Lower Left	Scaling	3	0.000	10	0	0.000
15		34.9	East	Wye Service / sealed	1	0.000	0	0	0.000
16		41.2	Lower Left	Scaling	2	0.000	2	0	0.000
17		46.3	Lower Left	Scaling	3	0.000	10	0	0.000
18		48.8	Lower Left	Scaling	3	0.000	10	0	0.000
19		54.1	Upper Right	Scaling	3	0.000	10	0	0.000
20		56.4	Crown	Scaling	3	0.000	10	0	0.000
21		57.7	West	Wye Service / sealed	1	0.000	0	0	0.000
22		59.2	Lower Left	Scaling	4	0.000	25	0	0.000
23		60.0	East	Break-In Conn	2	0.002	0	0	0.002
307 S OLIVER					4" Break In Connection				
24		61.5	Lower Left	Scaling	3	0.000	10	0	0.000
25		69.4	Upper Right	Scaling	2	0.000	2	0	0.000
26		71.8	Lower Left	Scaling	3	0.000	10	0	0.000
27		76.8	Lower Left	Scaling	3	0.000	10	0	0.000
28		79.6	Lower Left	Scaling	3	0.000	10	0	0.000
29		81.4	West	Break-In Conn	3	0.004	2	0	0.004
360 S DELLROSE					4" Break In Connection				
30		82.5	Lower Left	Scaling	4	0.000	25	0	0.000
31		84.4	Lower Left	Scaling	3	0.000	10	0	0.000



# Television Inspection Master Report

5/8/2009  
11:20 AM

US Structure: 5747-450      252      DELLROSE ST      Date Insp: 12/14/2007      Basin: E04C  
 DS Structure: 5747-449      270      DELLROSE ST      Dir Televised:      Upstream To Downstream

32	85.8	East	Wye Service / sealed	1	0.000	0	0	0.000
33	105.0	East	Break-In Conn	4	0.008	60	0	0.008
309 S OLIVER								
4" Break In Connection (should replace tap in the future)								
34	106.2	West	Wye Service / sealed	1	0.000	0	0	0.000
35	108.6	East	Wye Service / sealed	1	0.000	0	0	0.000
36	115.0	Crown	Scaling	2	0.000	2	0	0.000
37	125.4	Upper Right	Scaling	3	0.000	10	0	0.000
38	131.4	West	Wye Service / sealed	1	0.000	0	0	0.000
39	134.2	East	Wye Service / sealed	1	0.000	0	0	0.000
40	134.7	Upper Left	Crack-Horizontal	3	0.004	5	0	0.004
41	135.8	West	Wye Service	4	0.000	60	0	0.000
268 S DELLROSE								
4" Clay Wye Connection								
<b>Comment:</b> MINERAL DEPOSITS AROUND CONN								
42	140.8	Lower Left	Scaling	3	0.000	10	0	0.000
43	145.6	Lower Left	Scaling	3	0.000	10	0	0.000
44	148.2	Lower Left	Scaling	3	0.000	10	0	0.000
45	153.4	Lower Left	Scaling	3	0.000	10	0	0.000
46	155.7	Lower Left	Scaling	3	0.000	10	0	0.000
47	157.0	West	Wye Service / sealed	1	0.000	0	0	0.000
48	158.5	Lower Left	Scaling	3	0.000	10	0	0.000
49	159.5	East	Wye Service / sealed / scaling	2	0.000	0	0	0.000
50	160.9	Lower Left	Scaling	3	0.000	10	0	0.000
51	163.5	Lower Left	Scaling	3	0.000	10	0	0.000
52	171.0	Lower Left	Scaling	3	0.000	10	0	0.000
53	178.7	Lower Left	Scaling	3	0.000	10	0	0.000
54	183.7	Lower Left	Scaling	3	0.000	10	0	0.000
55	184.8	West	Wye Service / sealed	1	0.000	0	0	0.000
56	186.4	Lower Left	Scaling	3	0.000	10	0	0.000
57	187.4	East	Break-In Conn	3	0.004	2	0	0.004
311 S OLIVER								
4" Break In Connection								
<b>Comment:</b> NEEDS REPAIR								
58	191.4	Lower Left	Scaling	3	0.000	10	0	0.000
59	194.0	Lower Left	Scaling	3	0.000	10	0	0.000
60	196.7	Crown	Scaling	3	0.000	10	0	0.000
61	198.9	Lower Left	Scaling	3	0.000	10	0	0.000
62	201.7	Lower Left	Scaling	3	0.000	10	0	0.000
63	206.5	West	Break-In Conn	3	0.004	2	0	0.004
270 S DELLROSE								
4" Break In Connection								
<b>Comment:</b> NEEDS REPAIR, roots around the tap								
64	209.2	Joint	Offset	3	0.010	20	0	0.010
65	210.4	West	Wye Service / sealed	1	0.000	0	0	0.000
66	211.8	Lower Left	Scaling	3	0.000	10	0	0.000
67	212.9	East	Wye Service / sealed	1	0.000	0	0	0.000
68	215.6	Lower Left	Scaling	3	0.000	10	0	0.000
69	219.4	DS Manhole 5747-449	Scaling	3	0.000	0	0	0.000



# Television Inspection Master Report

5/8/2009  
11:19 AM

US Structure: 5747-449      270      DELLROSE ST      Date Insp: 12/19/2007      Basin: E04C  
 DS Structure: 5747-448      4719      LEWIS ST      Dir Televised: Upstream To Downstream

**Pipe Information**  
 Project No.: C-037      Dia: 8      Material: VCP      Length: 222.0      Slope: 0.400      DVD #0348

Obs. #	VTR Counter	Distance	Location	Description	Rating	Ratings				
						Obsrvd (gpm)	Est. (gpm)	Struct	Clean	Remain (gpm)
1		0.0	US Manhole 5747-449		1	CO-0	H2S-0	O2-20.8	LEL-0	
2		7.0	Lower Left / MINERAL DEPOSITS		3	0.000	0.000	10	0	0.000
3		7.0	East 319 S OLIVER	Break-in Conn 4" Break In Connection	3	0.004	0.004	2	0	0.004
4		16.3	West	SEALED Wye Service	1	0.000	0.000	0	0	0.000
5		19.0	East	SEALED Wye Service	1	0.000	0.000	0	0	0.000
6		20.6	Upper Right / MINERAL DEPOSITS		3	0.000	0.000	10	0	0.000
7		30.8	Invert / MINERAL DEPOSITS		3	0.000	0.000	10	0	0.000
8		38.0	Lower Left / MINERAL DEPOSITS		3	0.000	0.000	10	0	0.000
9		46.6	West	SEALED Wye Service	1	0.000	0.000	0	0	0.000
10		49.6	East	SEALED Wye Service	1	0.000	0.000	0	0	0.000
11		68.5	Lower Left / MINERAL DEPOSITS		4	0.000	0.000	25	0	0.000
12		70.4	West 276 S DELLROSE	Break-in Conn 4" Break In Connection	3	0.004	0.004	2	0	0.004
13		71.3	Upper Right / MINERAL DEPOSITS		3	0.000	0.000	10	0	0.000
14		72.2	West	SEALED Wye Service	1	0.000	0.000	0	0	0.000
15		73.8	Lower Left / MINERAL DEPOSITS		2	0.000	0.000	2	0	0.000
16		74.8	East	SEALED Wye Service	1	0.000	0.000	0	0	0.000
19		81.3	Crown / MINERAL DEPOSITS		2	0.000	0.000	2	0	0.000
20		84.0	Crown / MINERAL DEPOSITS		2	0.000	0.000	2	0	0.000
21		86.4	Lower Left / MINERAL DEPOSITS		3	0.000	0.000	10	0	0.000
22		88.9	Lower Left / MINERAL DEPOSITS		2	0.000	0.000	2	0	0.000
23		91.6	Upper Right / MINERAL DEPOSITS		2	0.000	0.000	2	0	0.000
24		94.2	Lower Left / MINERAL DEPOSITS		3	0.000	0.000	10	0	0.000
25		96.6	Lower Left / MINERAL DEPOSITS		3	0.000	0.000	10	0	0.000
26		97.9	West	SEALED Wye Service	1	0.000	0.000	0	0	0.000
27		100.5	East	SEALED Wye Service	1	0.000	0.000	0	0	0.000
28		101.9	Lower Left / MINERAL DEPOSITS		3	0.000	0.000	10	0	0.000
29		104.4	Lower Left / MINERAL DEPOSITS		3	0.000	0.000	10	0	0.000



# Television Inspection Master Report

5/8/2009  
11:19 AM

US Structure: 5747-449      270      DELLROSE ST      Date Insp: 12/19/2007      Basin: E04C  
 DS Structure: 5747-448      4719      LEWIS ST      Dir Televised:      Upstream To Downstream

30	106.9	Upper Right / MINERAL DEPOSITS	Scaling	2	0.000	2	0	0.000
31	111.9	Lower Left / MINERAL DEPOSITS	Scaling	3	0.000	10	0	0.000
32	116.9	Invert / MINERAL DEPOSITS	Scaling	3	0.000	10	0	0.000
33	118.0	West	SEALED Wye Service	1	0.000	0	0	0.000
34	120.1	Crown / MINERAL DEPOSITS	Crack-Horizontal	3	0.004	5	0	0.004
35	120.7	Wye Service Sealed Off / Seal Cracked	4" Clay Wye Connection	3	0.000	2	0	0.000
			<b>Comment: MINERAL DEPOSITS</b>					
36	121.5	Upper Left	Crack-Horizontal	2	0.002	2	0	0.002
37	124.6	Joint	Offset	3	0.010	20	0	0.010
38	129.8	Lower Left / MINERAL DEPOSITS	Scaling	3	0.000	10	0	0.000
39	131.1	Camera Lens Submerged	Sag starts	3	0.000	5	0	0.000
40	132.7		Sag	3	0.000	5	0	0.000
41	132.7	Invert / MINERAL DEPOSITS	Scaling	2	0.000	2	0	0.000
42	143.6	West	SEALED Wye Service	1	0.000	0	0	0.000
43	144.7	East	333 S OLIVER Break-In Conn 4" Break In Connection	2	0.002	0	0	0.002
44	146.5	East	SEALED Wye Service	1	0.000	0	0	0.000
45	169.2	West	SEALED Wye Service	1	0.000	0	0	0.000
46	171.9	East	SEALED Wye Service	1	0.000	0	0	0.000
47	173.2	Lower Left / MINERAL DEPOSITS	Scaling	3	0.000	10	0	0.000
50	214.1	Lower Left / MINERAL DEPOSITS	Scaling	3	0.000	10	0	0.000
53	222.2	DS Manhole 5747-448		3	0.000	0	0	0.000