

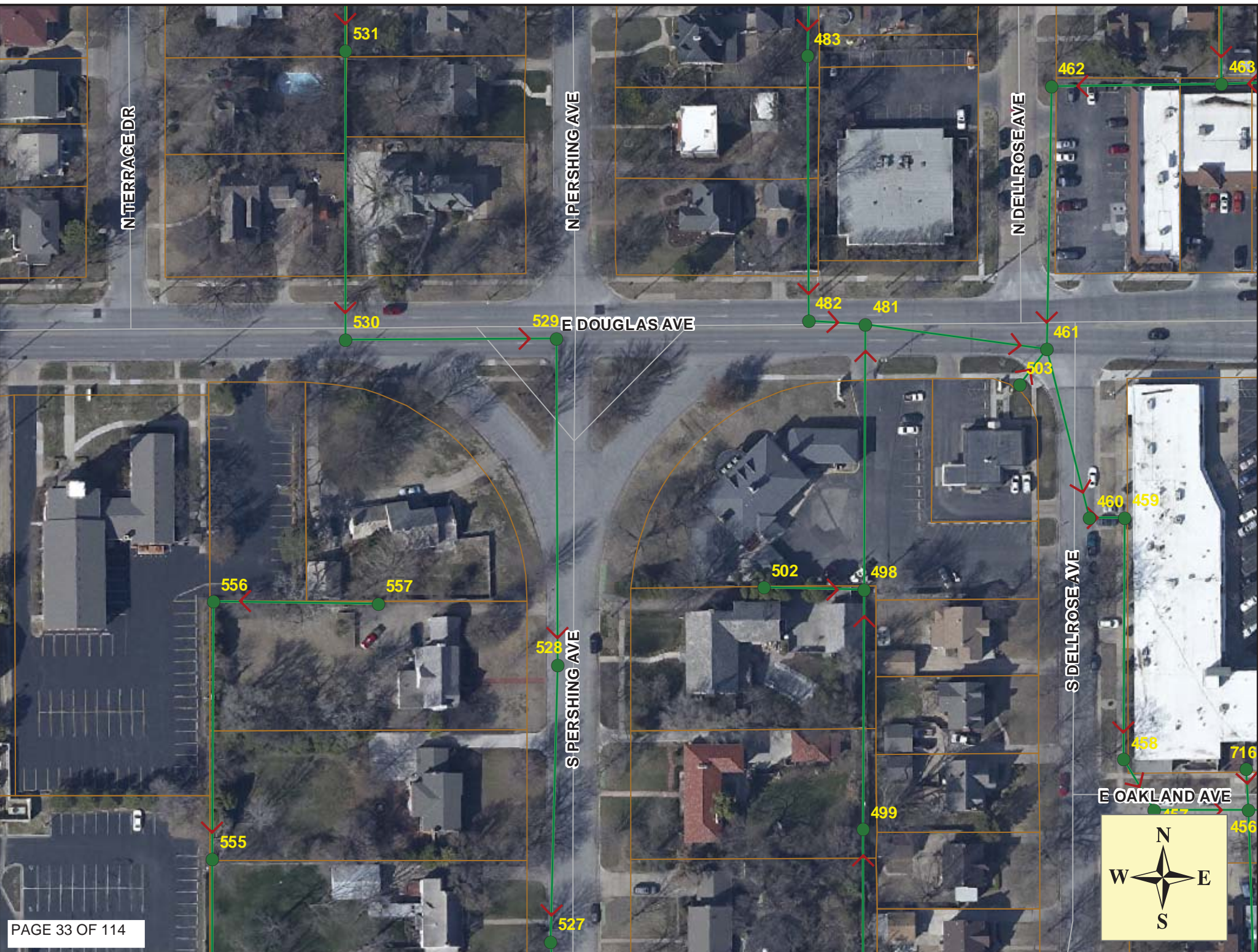
MH 5747-530
Approx MH depth = 11.0 ft

MH 5747-529
Approx MH depth = 8.7 ft

Install 413 lf of 8" Cured-in-Place Liner
from MH 5747-530 to MH 5747-528

MH 5747-528
Approx MH depth = 7.6 ft

N
SITE 4



Video Inspection Master Report

10/22/2012
3:09 PM

US Structure: 5747-530 **103 S PERSHING ST** **Date Insp:** 4/25/2012 **Basin:** E04C
DS Structure: 5747-529 **108 S PERSHING ST** **Dir Televised:** Upstream To Downstream

Pipe Information

Shape: Round	Length Status: VCP	Project No. : C-239
Dia/Ht: 8	Material: Slope: 0.141	Index:
Length: 163.0		Surface:

Obs. #	VTR Counter	Distance	Location	Description	Rating	Obsrvd (gpm)	Est. (gpm)	Ratings Struct Clean	Remain (gpm)
1		0.0	5747-530 US Manhole		1				
2		8.1		Crack-Radial	4				
3		13.4		Crack-Radial	3				
4		17.0		Sealed Off Wye	1				
5		20.6		Crack-Radial	3				
6		28.1		Crack-Radial	3				
7		30.8		Crack-Horizontal	1				
8		33.1		Crack-Radial	3				
9		35.4		Crack-Radial	3				
10		40.6		Crack-Radial	3				
11		42.1		Sealed Off Wye	1				
12		42.9		Crack-Radial	3				
13		48.1		Crack-Radial	3				
14		53.1		Crack-Radial	3				
15		55.3		Crack-Radial	2				
16		58.2		Crack-Radial	3				
17		60.5		Crack-Radial	2				
18		67.2		Sealed Off Wye	1				
19		67.9		Crack-Radial	3				
20		80.6		Crack-Radial	2				
21		82.7		Crack-Radial	3				
22		85.2		Crack-Radial	3				
23		91.9		Sealed Off Wye	1				
24		97.9		Crack-Horizontal	3				
25		100.4		Crack-Radial	3				
26		108.0		Crack-Radial	3				
27		110.3		Crack-Radial	3				
28		112.9		Crack-Radial	3				
29		115.4		Crack-Radial	3				
30		117.1		Sealed Off Wye	1				
31		117.9		Crack-Radial	3				
32		128.2		Crack-Radial	3				
33		130.7		Crack-Radial	3				
34		140.8		Crack-Radial	3				
35		142.3		Sealed Off Wye	1				
36		145.5		Crack-Radial	3				
37		159.5		5747-529 DS Manhole	1				

Video Inspection Master Report

10/22/2012
3:09 PM

US Structure: 5747-529 108 S PERSHING ST Date Insp: 4/25/2012 Basin: E04C
 DS Structure: 5747-528 125 S PERSHING ST Dir Televised: Downstream To Upstream

Pipe Information

Shape: Round Length Status: VCP Project No. : C-240
 Dia/Ht: 8 Material: Index:
 Length: 252.0 Slope: 0.151 Surface:

Obs. #	VTR Counter	Distance	Location	Description	Rating	Ratings		
						Obsrvd (gpm)	Est. (gpm)	Struct Clean Remain (gpm)
1		0.0		5747-528 DS Manhole	1			
2		6.0		Sealed Off Wye	1			
3		29.7		Sealed Off Wye	1			
4		40.4		Crack-Radial	2			
5		55.0		Sealed Off Wye	1			
6		80.0		Sealed Off Wye	1			
7		105.6		Sealed Off Wye	1			
8		130.4		Sealed Off Wye	1			
9		155.4		Sealed Off Wye	1			
10		180.6		Sealed Off Wye	1			
11		205.7		Sealed Off Wye	1			
12		251.8		US Manhole	1			

Lots of cracks throughout the pipe, not noted on this log.