

MH 5747-510
285 S. Dellrose
Approx depth = 11.1 ft

MH 5747-509
400 S. Pershing
Approx depth = 12.0 ft

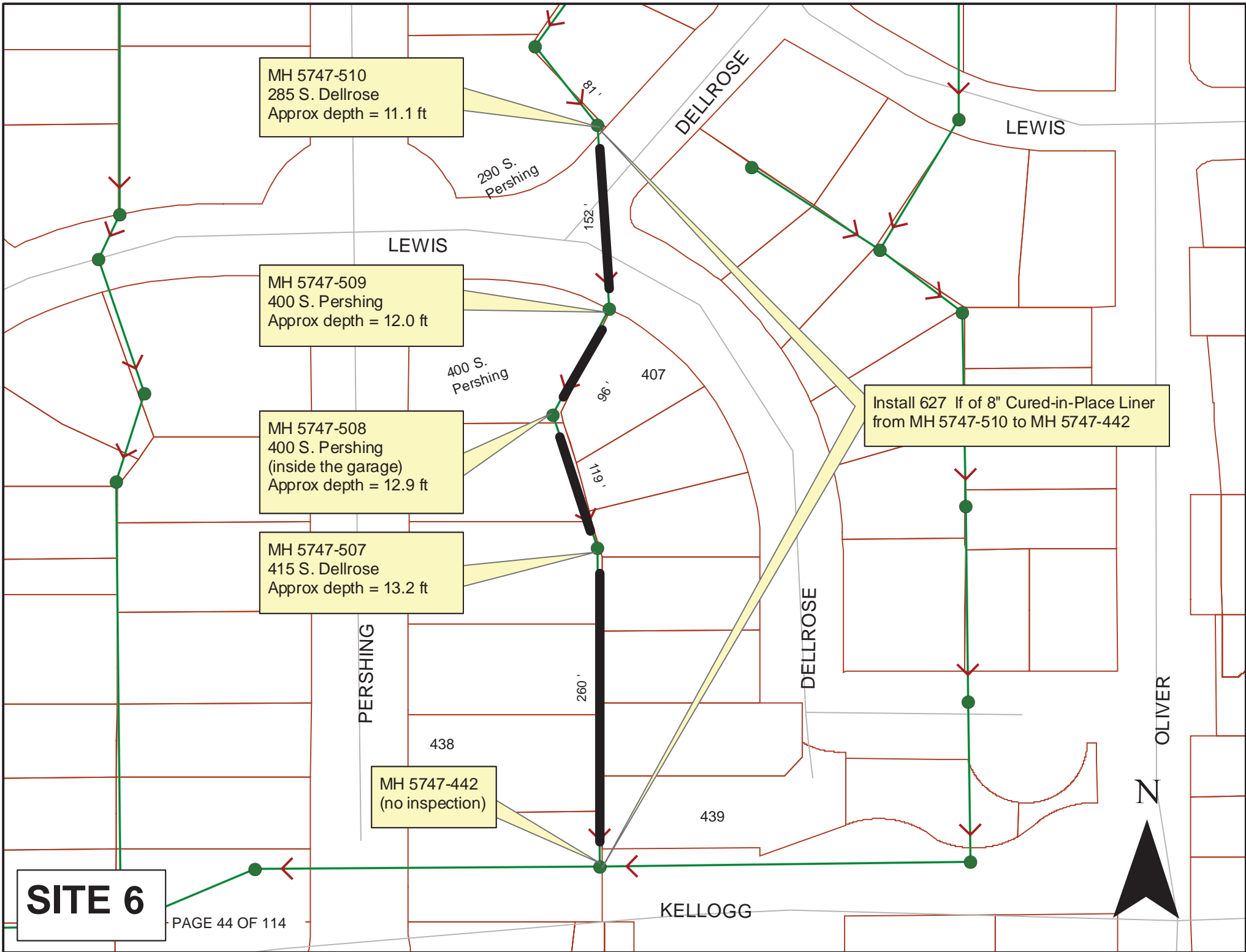
MH 5747-508
400 S. Pershing
(inside the garage)
Approx depth = 12.9 ft

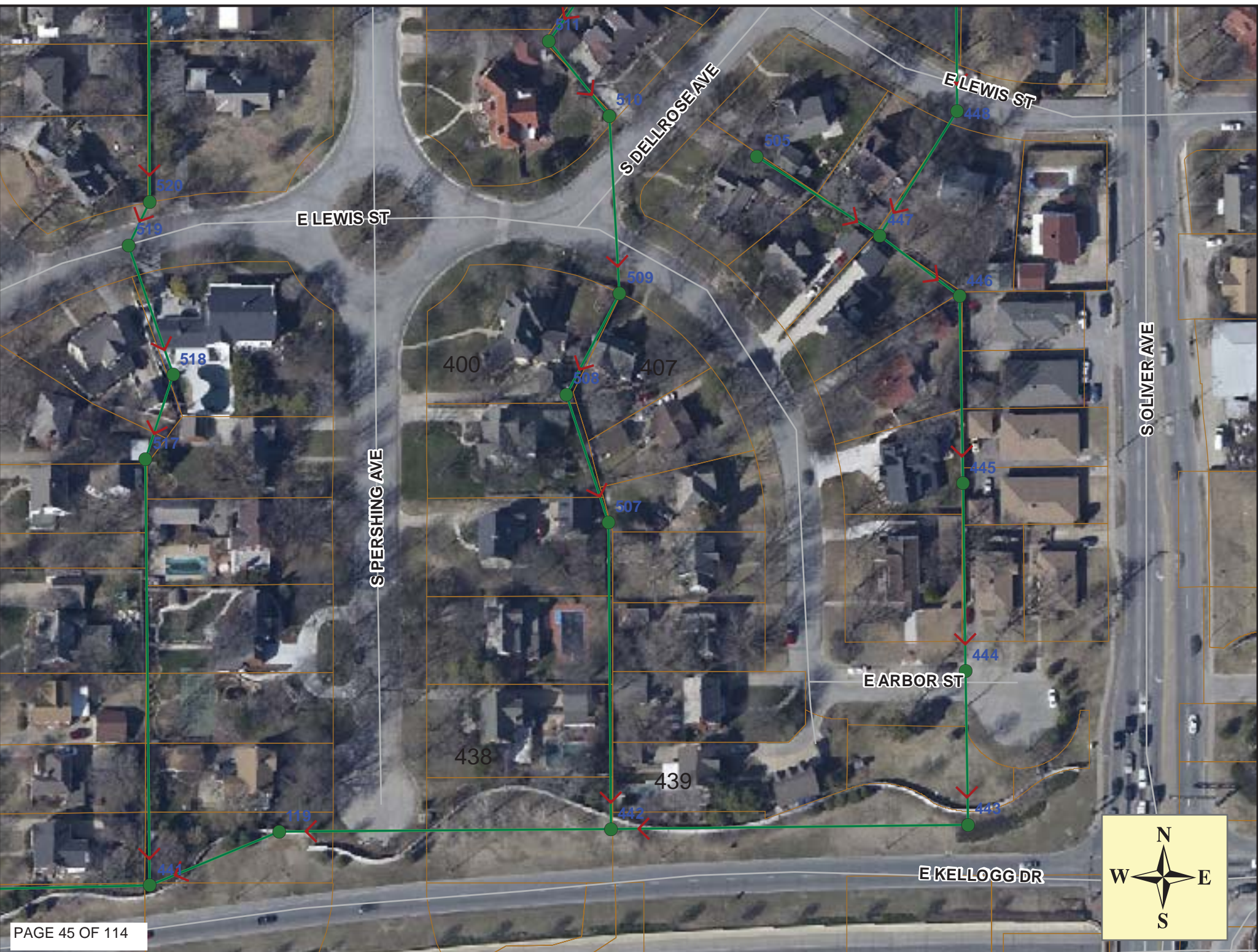
MH 5747-507
415 S. Dellrose
Approx depth = 13.2 ft

MH 5747-442
(no inspection)

Install 627 lf of 8" Cured-in-Place Liner
from MH 5747-510 to MH 5747-442

SITE 6





Video Inspection Master Report

10/23/2012
9:06 AM

US Structure: 5747-510 285 S DELLROSE ST Date Insp: 5/7/2012 Basin: E04C
 DS Structure: 5747-509 400 S PERSHING ST Dir Televised: Upstream To Downstream

Pipe Information

Shape: Round Length Status: VCP Project No. : C-038
 Dia/Ht: 8 Material: Index:
 Length: 152.0 Slope: 0.296 Surface:

Obs. #	VTR Counter	Distance	Location	Description	Rating	Ratings		
						Obsrvd (gpm)	Est. (gpm)	Remain (gpm)
1		0.0		5747-510 US Manhole	1			
2		124.0		Crack-Horizontal	3			
3		127.8		Crack-Horizontal	3			
4		139.2		Crack-Horizontal	3			
5		151.2		5747-509 DS Manhole	1			

Video Inspection Master Report

10/23/2012
9:06 AM

US Structure: 5747-509 400 S PERSHING ST Date Insp: 5/7/2012 Basin: E04C
 DS Structure: 5747-508 400 S PERSHING AVE Dir Televised: Upstream To Downstream

Pipe Information

Shape: Round Length Status: VCP Project No. : C-038
 Dia/Ht: 8 Material: Index:
 Length: 96.5 Slope: 0.385 Surface:

Obs. #	VTR Counter	Distance	Location	Description	Rating	Ratings		
						Obsrvd (gpm)	Est. (gpm)	Struct Clean Remain (gpm)
1		0.0		5747-509 US Manhole	1			
2		31.6		Sealed Off Wye	1			
3		40.0		Roots	1			
4		54.9	400 S PERSHING	Break-In Conn	1			slightly extended tap / PVC
5		56.4	407 S DELLROSE	Break-In Conn	2			cracks around tap
6		80.4		Sealed Off Wye	1			
7		83.3	Infiltration at wye	Sealed Off Wye	1			
8		86.4		Crack-Horizontal	4			
9		90.9		Crack-Horizontal	3			
10		96.1		5747-508 DS Manhole	1			MANHOLE INSIDE GARAGE

Mineral deposits at joints

The owners of 400 S. Pershing know about the lining project. However, they want a minimum of 7 days notice to get inside the garage for the project.

Video Inspection Master Report

10/23/2012
9:06 AM

US Structure: 5747-508 **400 S PERSHING AVE** **Date Insp:** 5/7/2012 **Basin:** E04C
DS Structure: 5747-507 **415 S DELLROSE AVE** **Dir Televised:** Upstream To Downstream

Pipe Information

Shape: Round	Length Status: VCP	Project No. : C-038
Dia/Ht: 8	Material: Slope: 0.322	Index: Surface:
Length: 118.5		

Obs. #	VTR Counter	Distance	Location	Description	Rating	Obsrvd (gpm)	Est. (gpm)	Struct Clean	Remain (gpm)
--------	-------------	----------	----------	-------------	--------	--------------	------------	--------------	--------------

1 0.0 MANHOLE INSIDE GARAGE 5747-508 US Manhole
 The owners of 400 S. Pershing know about the lining project. However, they want a minimum of 7 days notice to get inside the garage for the project.

2		4.9		Sealed Off Wye	1				
3		8.1		Crack-Horizontal	3				
4		10.7		Crack-Horizontal	3				
5		18.9		Crack-Horizontal	2				
6		21.0		Broken Pipe	2				
7		24.9		Sealed Off Wye	1				
8		26.3		Crack-Horizontal	3				
9		27.5		Sealed Off Wye	1				
10		29.0		Crack-Horizontal	3				
11		41.8		Crack-Horizontal	3				
12		44.2		Crack-Horizontal	3				
13		47.1		Broken Pipe	3				
14		50.5		Sealed Off Wye	1				
15		52.0	406 S PERSHING	Break-In Conn	5				
16		76.3		Sealed Off Wye	1				
17		76.3	411 S DELLROSE	Break-In Conn	1				
18		79.1		Sealed Off Wye	1				
19		79.1		Crack-Radial	5				
20		80.1		Broken Pipe	2				
21		87.6		Broken Pipe	2				
22		90.9		Broken Pipe	2				
23		92.9		Crack-Horizontal	4				
24		95.5		Crack-Horizontal	3				
25		97.9		Sealed Off Wye	3				
26		100.5		Sealed Off Wye	3				
27		103.2	415 S DELLROSE	Break-In Conn	5				
28		116.4		5747-507 DS Manhole	1				

Video Inspection Master Report

US Structure: 5747-507 **415 S DELLROSE AVE** **Date Insp:** 5/7/2012 **Basin:** E04C
DS Structure: 5747-442 **466 PERSHING ST** **Dir Televised:** Upstream To Downstream

Pipe Information
Project No. : C-038 **Dia:** 8 **Material:** VCP **Length:** 260.5 **Slope:** 0.354

Obs. #	VTR	Counter	Distance	Location	Description	Rating	Ratings		Remain
							Obsrvd (gpm)	Est. (gpm)	
1			0.0		5747-507 US Manhole	1			
2			7.9		Sealed Off Wye	1			
3			10.3		Sealed Off Wye	1			
4			18.9		Crack-Horizontal	2			
5			21.8		Crack-Horizontal	2			
6			27.0		Crack-Horizontal	3			
7			29.4		Broken Pipe	2			
8			32.2		Break-In Conn	3			
9			36.0		Wye Service	3			
10			52.9		Crack-Horizontal	2			
11			59.1		Sealed Off Wye	1			
12			59.1		Crack-Horizontal	2			
13			61.5		Sealed Off Wye	2			
14			85.1		Sealed Off Wye	1			
15			86.9		Break-In Conn	1			
16			91.4		Crack-Horizontal	3			
17			94.1		Crack-Horizontal	3			
18			99.4		Crack-Horizontal	3			
19			102.0		Crack-Radial	4			
20			105.0		Crack-Horizontal	3			
21			108.6		Wye Service	2			
22			109.8		Sealed Off Wye	2			
23			113.8		Broken Pipe	2			
24			117.6		Crack-Horizontal	4			
25			120.3		Crack-Horizontal	3			
26			122.8		Crack-Horizontal	3			
27			126.7		Broken Pipe	2			
28			133.4		Sealed Off Wye	2			
29			137.4		Sealed Off Wye	1			
30			160.1		Break-In Conn	1			
31			162.6		Break-In Conn	1			
32			186.7		Sealed Off Wye	1			
33			189.5		Sealed Off Wye	1			
34			211.5		Break-In Conn	2			
35			214.3		Sealed Off Wye	1			
36			238.6		Sealed Off Wye	1			
37			241.1		Sealed Off Wye	1			
38			242.0		Crack-Radial	3			
39			249.6		Offset Joint	4			
40			252.5		Mat. Changes to PVC	4			