

Install 571 lf of 8" Cured-in-Place Liner from MH 5847-333 to MH 5847-328

Install 148 lf of 8" Cured-in-Place Liner from MH 5847-327 to MH 5847-326

MH # 5847-328  
Approx depth = 8.5 ft

MH # 5847-332  
5225 Plaza Ln.  
Approx depth = 12.5 ft

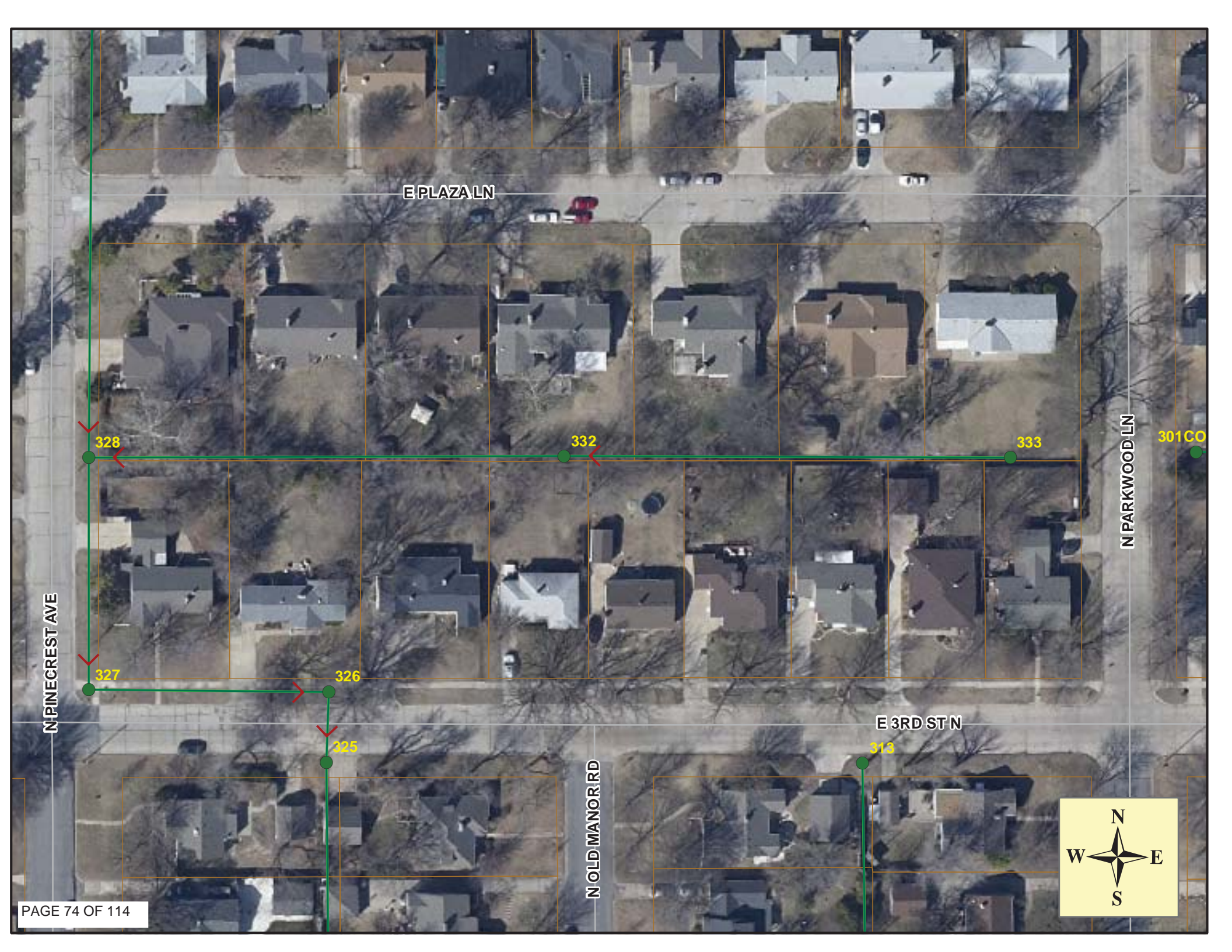
MH # 5847-333  
5321 Plaza Ln.  
Approx depth = 11.2 ft

MH # 5847-327  
Approx depth = 9.1 ft

MH # 5847-326  
Approx depth = 12.7 ft

**SITE 12**





E PLAZA LN

N PARKWOOD LN

N PINECREST AVE

N OLD MANOR RD

E 3RD ST N

301 CO

328

332

333

327

326

325

313

326



## Video Inspection Master Report

8/2/2012  
1:26 PM

US Structure: 5847-333CO      5321 E PLAZA LN      Date Insp: 5/29/2012      Basin: E04D  
 DS Structure: 5847-332      5225 E PLAZA LN      Dir Televised: Downstream To Upstream

### Pipe Information

Shape: Round      Length Status: VCP      Project No. : E-179  
 Dia/Ht: 8      Material:      Index:  
 Length: 297.8      Slope: 0.400      Surface:

Obs. #	VTR Counter	Distance	Location	Description	Rating	Ratings		
						Obsrvd (gpm)	Est. (gpm)	Remain (gpm)
1		0.0	TV AGAINST FLOW	5847-332 DS Manhole	1			
2		6.0		Broken Pipe	5			
3		12.5		Roots	3			
4		18.0		Roots	3			
5		21.6		Sealed Off Wye	1			
6		23.2		Sealed Off Wye	4			
7		25.2		Roots	3			
8		26.1		Crack-Horizontal	5			bad horizontal cracks in all quads
9		28.5		Crack-Horizontal	4			
10		31.8		Roots	4			
11		35.3		Crack-Horizontal	4			
12		36.9		Crack-Horizontal	4			
13		40.2		Crack-Horizontal	4			
14		42.9		Roots	2			
15		46.4		Crack-Horizontal	4			
16		52.8	5302 E 3RD ST N	Wye Service	1			
17		55.0		Sealed Off Wye	1			
18		70.1		Roots	2			
19		76.2		Roots	3			
20		82.8	5308 E 3RD ST N / full of roots	Wye Service	5			
21		85.4	5303 E PLAZA	Wye Service	2			
22		94.6		Roots	1			
23		106.5		Roots	2			
24		113.1		Sealed Off Wye	1			
25		116.4		Sealed Off Wye	1			
26		131.2		Roots	1			
27		134.3		Roots	4			
28		143.8		Sealed Off Wye	1			
29		146.7		Sealed Off Wye	2			
30		150.1		Crack-Horizontal	2			
31		174.1	5314 E 3RD ST N	Wye Service	1			
32		177.0	5315 E PLAZA	PVC Break-In Conn	1			
33		178.0		Crack-Horizontal	3			

## Video Inspection Master Report

8/2/2012  
1:26 PM

US Structure: 5847-333CO      5321 E PLAZA LN      Date Insp: 5/29/2012      Basin: E04D  
 DS Structure: 5847-332      5225 E PLAZA LN      Dir Televised: Downstream To Upstream

34	180.3		Crack-Horizontal	2
35	197.8		Roots	2
36	201.8		Broken Pipe	4
37	208.1		Sealed Off Wye	4
38	208.4		Broken Pipe	4
39	210.6		Broken Pipe	4
40	214.9		Roots	4
41	214.9		Broken Pipe	4
42	217.5		Broken Pipe	4
43	223.0		Broken Pipe	3
44	226.2		Crack-Horizontal	3
45	232.2	5320 E 3RD ST N	PVC Break-In Conn	1
46	235.3		Sealed Off Wye	1
47	256.8		Broken Pipe	4
48	259.5	5326 E 3RD ST N	Wye Service	4
49	262.4	5321 E PLAZA	Wye Service	1
50	268.3		Roots	1
51	269.1		Crack-Horizontal	2

**A manhole was constructed "by others" at approx. 275 ft. The easterly 15 If was badly broken up with a cleanout at the end. So the easterly 15 If was abandoned with the construction of the manhole.**

52	280.3		Broken Pipe	3
53	284.4		Sealed Off Wye	1
54	284.4		Broken Pipe / invert is shifted	4
55	286.9		Sealed Off Wye	1
56	287.5		Broken Pipe	4
57	289.9		Broken Pipe	4
58	295.7	(no wyes at the cleanout)	US Cleanout 5847-333CO	1

Pipe in poor condition / needs CIPP installed.

## Video Inspection Master Report

8/2/2012  
1:26 PM

US Structure: 5847-332      5225 E PLAZA LN      Date Insp.: 5/23/2012      Basin: E04D  
 DS Structure: 5847-328      415 PINECREST AV      Dir Televised: Downstream To Upstream

### Pipe Information

Shape: Round      Project No.: E-179  
 Dia/Ht: 8      Material: VCP  
 Length: 296.7      Slope: 0.350

Obs. #	VTR Counter	Distance	Location	Description	Rating	Ratings		Remain (gpm)
						Obsrvd (gpm)	Est. (gpm)	
1		0.0	5847-328	DS Manhole	1	TV Against the Flow		
2		12.1		Sealed Off Wye	1			
3		12.1		Roots	1			
4		14.9		Sealed Off Wye	1			
5		14.9		Roots	1			
6		21.2		Roots	1			
7		24.7		Broken Pipe	4			
8		27.6		Broken Pipe	4			
9		31.1		Broken Pipe	3			
10		32.4		Broken Pipe	4			
11		33.8		Broken Pipe	4			
12		36.7		Broken Pipe	3			
13		42.3	5202 E 3RD ST N	Wye Service	1			
14		43.1		Crack-Horizontal	4			
15		45.7	5203 E PLAZA	Wye Service	3			
16		46.3		Broken Pipe	3			
17		48.6		Roots	2			
18		49.1		Broken Pipe	4			
19		52.8		Crack-Horizontal	1			
20		57.9		Roots	1			
21		64.9		Crack-Horizontal	2			
22		66.9		Roots	2			
23		70.2		Roots	3			
24		73.0	Seal is broken & roots entering	Sealed Off Wye	4			
25		73.0		Roots	2			
26		76.1	Roots	Sealed Off Wye	3			
27		79.3		Roots	1			
28		85.6		Roots	2			
29		103.5	5212 E 3RD ST N	PVC Break-In Conn	2			
30		106.4	5211 E PLAZA	PVC Break-In Conn	1			
31		134.2		Sealed Off Wye	1			
32		136.7		Sealed Off Wye	1			
33		164.5		Sealed Off Wye	1			

## Video Inspection Master Report

8/2/2012  
1:26 PM

US Structure: 5847-332      5225 E PLAZA LN      Date Insp: 5/23/2012      Basin: E04D  
 DS Structure: 5847-328      415 PINECREST AV      Dir Televised: Downstream To Upstream

34	167.7		Sealed Off Wye	1
35	176.5		Roots	1
36	195.1		Sealed Off Wye	1
37	198.1		Sealed Off Wye	1
38	225.4	5220 E 3RD ST N	Wye Service	1
39	228.4	5219 E PLAZA	Roots / Wye Service	4
40	250.8		Mat. Chngs to PVC	1
41	271.3		Mat. Chngs to VCP	1
42	285.6	5226 E 3RD ST N	Roots / Wye Service	2
43	289.8	5225 E PLAZA	/ Roots Wye Service	4
45	287.1		Debris	2
46	288.1		Debris	2
44	294.4	5847-332 (under wire fence) (access from 5225 Plaza)	US Manhole	1

## Video Inspection Master Report

8/2/2012  
1:26 PM

US Structure: 5847-327      5202 E 3RD ST      Date Insp.: 5/29/2012      Basin: E04D  
 DS Structure: 5847-326      5212 3RD ST      Dir Televised:      Upstream To Downstream

### Pipe Information

Shape: Round      Length Status: VCP      Project No. : E-179  
 Dia/Ht: 8      Material:      Index:  
 Length: 148.0      Slope: 0.351      Surface: Paved & Unpaved

Obs. #	VTR Counter	Distance	Location	Description	Rating	Ratings			
						Obsrvd (gpm)	Est. (gpm)	Struct Clean	Remain (gpm)
1		0.0	5847-327	US Manhole	1				
2		10.9		Crack-Horizontal	3				
3		13.7		Crack-Horizontal	3				
4		19.7		Broken Pipe	4				
5		23.1		Crack-Horizontal	4				
6		25.8		Crack-Horizontal	4				
7		32.1		Crack-Horizontal	3				
8		35.4		Crack-Horizontal	2				
9		57.0		Crack-Horizontal	2				
10		130.9		Sag	1				
11		132.8		Sag	4				
12		134.5		Sag	1				
13		134.5		Sag	1				
14		146.5	5847-326	DS Manhole	1				