

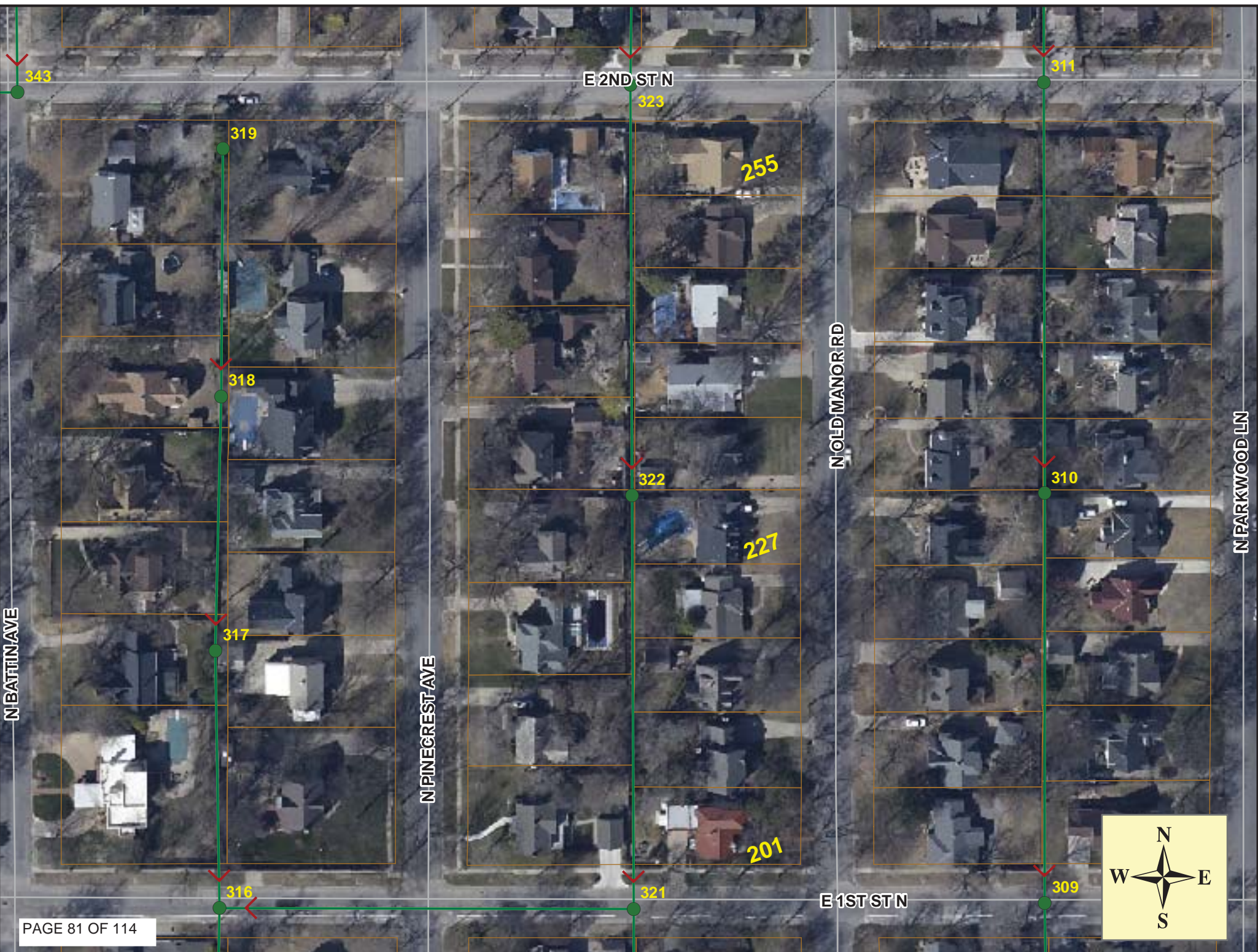
Install 669 lf of 8" Cured-in-Place Liner from MH 5847-323 to MH 5847-321

MH 5847-323
Approx depth = 12.8 ft

MH 5847-322
227 N. Old Manor
Approx depth = 21.8 ft

MH 5847-321
Approx depth = 16.7 ft
(flow goes to the west, no flow in or out from the south)

SITE 13





Video Inspection Master Report

8/17/2012
7:53 AM

US Structure: 5847-323 **301 N OLD MANOR ST** **Date Insp:** 5/30/2012 **Basin:** E04D
DS Structure: 5847-322 **227 N OLD MANOR RD** **Dir Televised:** Upstream To Downstream

Pipe Information

Project No. : E-036 **Dia:** 8 **Material:** VCP **Length:** 333.0

Obs. #	VTR Counter	Distance	Location	Description	Rating	Ratings		
						Obsr'd (gpm)	Est. (gpm)	Struct Clean Remain (gpm)
1		0.0		5847-323 US Manhole	1			
2		52.9		Sealed Off Wye	1			
3		55.8		Sealed Off Wye	1			
4		76.4		Roots	1			
5		77.0	256 N PINECREST	Break-In Conn	2		Tap replaced "by others"	
6		78.0	255 N OLD MANOR	Break-In Conn	3		Tap replaced "by others"	
7		80.3		Sealed Off Wye	1			
8		102.1		Sealed Off Wye	1			
9		105.1		Sealed Off Wye	1			
10		129.8		Sealed Off Wye	1			
11		132.1	251 N OLD MANOR	Break-In Conn	2			
12		151.2	248 N PINECREST	Wye Service	4			
13		153.6		Sealed Off Wye	1			
14		175.8		Sealed Off Wye	1			
15		178.6		Sealed Off Wye	1			
16		202.9		Sealed Off Wye	1			
17		206.1	243 N OLD MANOR	Wye Service	2			
18		222.7	Joint	Cracks begin / shifted pipe	4			
18		225.0	240 N PINECREST	4" VCP Break-In Conn	4		Tap replaced "by others"	
18		226.0	Joint	Cracks end	4			
19		227.6		Sealed Off Wye	1			
20		230.4	237 N OLD MANOR	Break-In Conn	1			
21		248.7		Sealed Off Wye	1			
22		251.9		Sealed Off Wye	1			
23		273.3		Sealed Off Wye	1			
24		275.2	233 N OLD MANOR	Break-In Conn	1			
25		297.8	234 N PINECREST	Wye Service	1			
26		300.6		Sealed Off Wye	1			
27		320.9		Sealed Off Wye	1			
28		325.0		Sealed Off Wye	1			
29		331.9		5847-322 DS Manhole	1		MH is 22 ft deep	



Video Inspection Master Report

8/17/2012
7:53 AM

US Structure: 5847-322 227 N OLD MANOR RD Date Insp: 5/30/2012 Basin: E04D
 DS Structure: 5847-321 127 N OLD MANOR ST ST Dir. Televised: Upstream To Downstream

Project No. :E-036 Dia/Ht: 8 Material: VCP Length: 335.5 Slope: 0.400

Obs. #	VTR Counter	Distance	Location	Description	Rating	Ratings		
						Obsrvd (gpm)	Est. (gpm)	Remain (gpm)
1		0.0		5847-322 US Manhole (21.8 ft deep)	1			
2		20.7		Sealed Off Wye	1			
3		23.9		Sealed Off Wye	1			
4		45.3	224 N PINECREST	4" VCP Wye Service	1		Tap replaced "by others"	
5		48.3	227 N OLD MANOR	4" VCP Wye Service	5		Tap replaced "by others"	
<p>(service line was completely off the main at first joint out and there is a cavity) (pipe is about 21 feet deep) There was a utility pole at this tap location. A new PVC tap was made on the main a few feet from the original tap location. There is still a hole on the pipe where the old tap used to be and there is still a cavity outside of the main. This needs to be sealed off with the CIPP liner.</p>								
7		69.6		Sealed Off Wye	1			
8		72.8		Sealed Off Wye	1			
9		94.1		Sealed Off Wye	1			
10		96.8	221 N OLD MANOR	Break-In Conn	1			
11		118.6		Sealed Off Wye	1			
12		121.3	218 N PINECREST	Break-In Conn	2			
13		122.1		Sealed Off Wye	1			
14		143.1		Sealed Off Wye	1			
15		145.8	215 N OLD MANOR	4" VCP Break-In Conn	3		Tap replaced "by others"	
16		170.9		Sealed Off Wye	1			
17		173.9		Sealed Off Wye	1			
18		195.4		Sealed Off Wye	1			
19		198.0	207 N OLD MANOR	Break-In Conn	1			
20		219.2	208 N PINECREST	Break-In Conn	1			
21		221.8		Sealed Off Wye	1			
22		247.5		Sealed Off Wye	1			
23		250.3		Sealed Off Wye	1			
24		254.8	204 N PINECREST	Break-In Conn	1			
25		270.8		Sealed Off Wye	1			
26		273.2	201 N OLD MANOR	4" VCP Break-In Conn	3		Tap replaced "by others"	
27		296.0		Sealed Off Wye	1			
28		299.3		Sealed Off Wye	1			
29		336.3		5847-321 DS Manhole	1			