

MH 6047-226  
Approx. depth = 11.6 ft

MH 6047-225  
Approx. depth = 11.6 ft

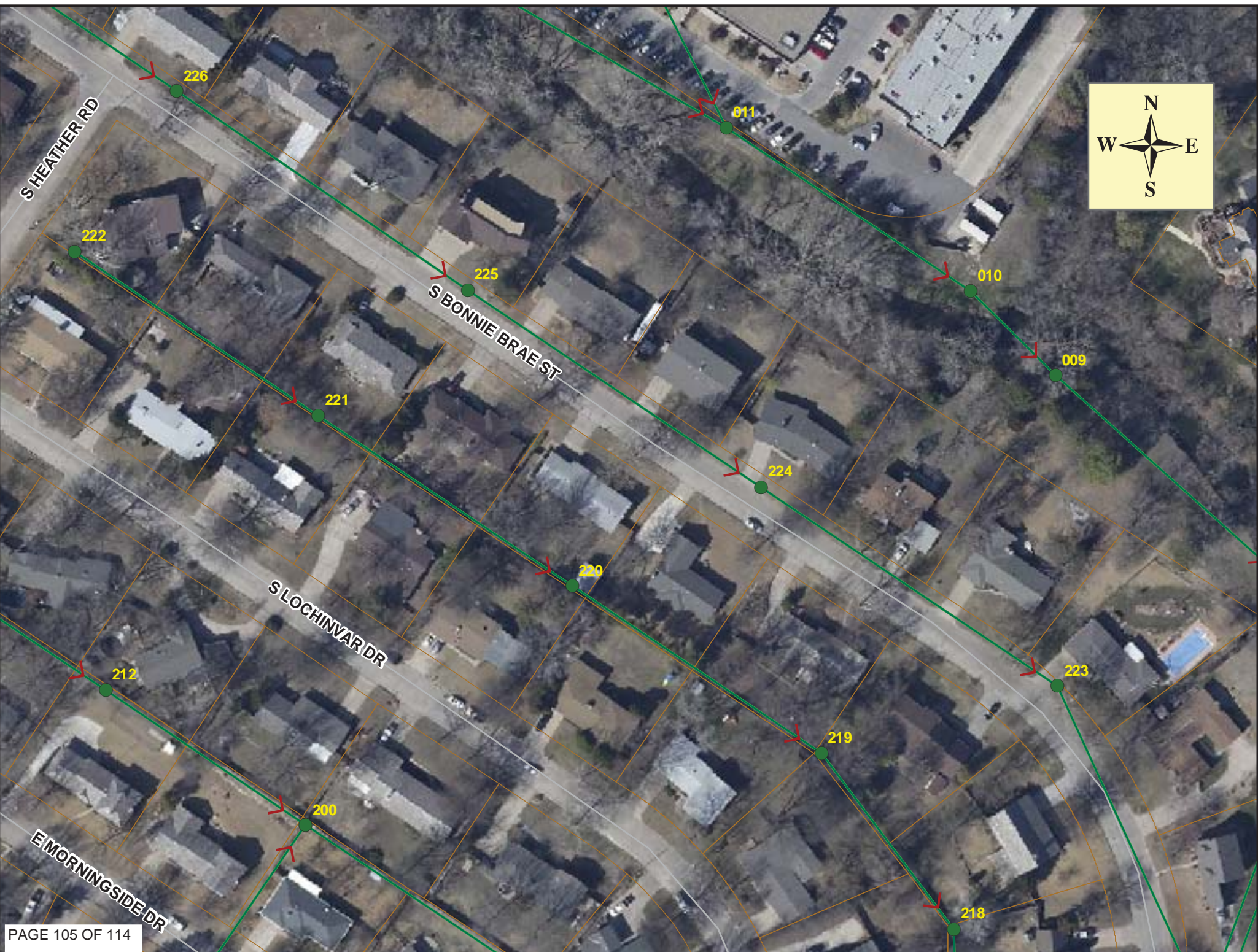
MH 6047-224  
Approx. depth = 12.0 ft

MH 6047-223  
Approx. depth = 10.4 ft

Install 941 lf of 8" Cured-in-Place Liner  
from MH 6047-226 to MH 6047-223

**SITE 19**

North of Kellogg & East of Rock Rd.



# Video Inspection Master Report

11/2/2012  
1:44 PM

US Structure: 6047-226      202 S BONNIE BRAE ST      Date Insp.: 1/12/2012      Basin: E01G2  
 DS Structure: 6047-225      220 S BONNIE BRAE ST      Dir Televised: Upstream To Downstream

**Pipe Information**  
 Project No.: G-164      Dia: 8      Material: VCP      Length: 313.4      Slope: 0.102      DVD#0696

Obs. #	VTR Counter	Distance	Location	Description	Rating	Ratings				
						Obsrvd (gpm)	Est. (gpm)	Struct Clean	Remain (gpm)	
1		0.0	6047-226	US Manhole	1	0.000	0.000	0	0	0.000
2		7.5		Crack-Horizontal	3	0.004	0.004	5	0	0.004
3		10.8		Sealed Off Wye	1	0.000	0.000	0	0	0.000
4		27.1		Sag begin	3	0.000	0.000	5	0	0.000
5		32.8	(water not on lens)	Sag end	1	0.000	0.000	1	0	0.000
6		45.2		Sag begin	1	0.000	0.000	1	0	0.000
7		47.2	(water never over lens)	Sag end	1	0.000	0.000	1	0	0.000
8		49.3		Broken Pipe	3	0.010	0.010	60	0	0.010
9		54.7		Broken Pipe	3	0.010	0.010	60	0	0.010
10		57.8		Broken Pipe	3	0.010	0.010	60	0	0.010
11		58.6		Material changes to PVC	1	0.000	0.000	0	0	0.000
12		65.9		Sag	2	0.000	0.000	2	0	0.000
13		67.9	208 SOUTH BONNIE BRAE	PVC Break-In Conn	1	0.001	0.001	0	0	0.001
14		69.2		Materials changes back to VCP	1	0.000	0.000	0	0	0.000
15		81.5		Sag	3	0.000	0.000	5	0	0.000
16		84.4		Sag	1	0.000	0.000	1	0	0.000
17		84.5		Internal CIPP sleeve repair begins	1	0.000	0.000	0	0	0.000
18		87.5		Internal CIPP sleeve repair ends	1	0.000	0.000	0	0	0.000
19		113.8		Sealed Off Wye	1	0.000	0.000	0	0	0.000
20		114.2		Sag begins	1	0.000	0.000	1	0	0.000
21		120.1		Sag ends	1	0.000	0.000	1	0	0.000
22		128.0		Sag begins	1	0.000	0.000	1	0	0.000
23		132.7		Sag ends	1	0.000	0.000	1	0	0.000
24		155.4		Crack-Horizontal	3	0.004	0.004	5	0	0.004
25		157.8		Crack-Horizontal	3	0.004	0.004	5	0	0.004
26		167.2		Crack-Horizontal	3	0.004	0.004	5	0	0.004
27		172.0		Offset Joint	3	0.000	0.000	5	0	0.000
28		197.2		Sag begins	3	0.010	0.010	60	0	0.010
29		205.0		Crack-Horizontal	3	0.004	0.004	5	0	0.004
30		205.6		Sag ends	1	0.000	0.000	1	0	0.000
31		210.3		Broken Pipe	3	0.010	0.010	60	0	0.010
32		216.5		Broken Pipe	3	0.010	0.010	60	0	0.010
33		222.4		Crack-Horizontal	3	0.004	0.004	5	0	0.004
34		227.1	214 SOUTH BONNIE BRAE	PVC Break-In Conn	1	0.001	0.001	0	0	0.001
35		245.1		Sag begins	1	0.000	0.000	1	0	0.000
36		250.6		Sag ends	1	0.000	0.000	1	0	0.000
37		313.1	6047-225	DS Manhole	1					(Sags not bad enough to open cut)

## Video Inspection Master Report

11/2/2012  
1:44 PM

US Structure: 6047-225      220 S BONNIE BRAE ST      Date Insp.: 2/10/2010      Basin: E01G2  
 DS Structure: 6047-224      238 S BONNIE BRAE ST      Dir Televised: Upstream To Downstream

### Pipe Information

Shape: Round      Length Status: VCP      Project No.: G-164  
 Dia/Ht: 8      Material:      DVD #0554  
 Length: 314.4      Slope: 0.001

Obs. #	VTR Counter	Distance	Location	Description	Rating	Ratings				
						Obsrvd (gpm)	Est. (gpm)	Struct Clean	Remain (gpm)	
1		0.0		6047-225 / US Manhole						
2		0.0		Broken Pipe	2	0.008		44	0	0.008
3		21.8	220 S BONNIE BRAE	Wye Service	1	0.000		0	0	0.000
4		47.0		Crack-Horizontal	2	0.002		2	0	0.002
5		52.9		Crack-Horizontal	3	0.004		5	0	0.004
6		55.6		Broken Pipe	2	0.008		44	0	0.008
7		58.6		Crack-Horizontal	3	0.004		5	0	0.004
8		79.5		Crack-Horizontal	2	0.002		2	0	0.002
9		95.8		Broken Pipe	2	0.008		44	0	0.008
10		97.3		Broken Pipe	2	0.008		44	0	0.008
11		100.5		Crack-Radial	3	0.004		5	0	0.004
12		103.1		Broken Pipe	2	0.008		44	0	0.008
13		109.2		Broken Pipe	2	0.008		44	0	0.008
14		112.2		Broken Pipe	2	0.008		44	0	0.008
15		115.4	226 S BONNIE BRAE	Break-In Conn	1	0.001		0	0	0.001
16		116.6		Crack-Horizontal	2	0.002		2	0	0.002
17		118.1		Crack-Horizontal	1	0.001		1	0	0.001
18		128.4		Sealed Off Wye	1	0.000		0	0	0.000
19		129.9		Broken Pipe	2	0.008		44	0	0.008
20		133.0		Crack-Horizontal	2	0.002		2	0	0.002
21		138.9		Broken Pipe	3	0.010		60	0	0.010
22		144.7		Broken Pipe	3	0.010		60	0	0.010
23		147.8		Crack-Horizontal	2	0.002		2	0	0.002
24		162.3		Crack-Radial	2	0.002		2	0	0.002
25		171.5		Crack-Horizontal	2	0.002		2	0	0.002
26		174.1		Broken Pipe	2	0.008		44	0	0.008
27		214.1		Broken Pipe	2	0.008		44	0	0.008
28		215.8	232 S BONNIE BRAE	Break-In Conn	4	0.008		60	0	0.008
29		219.2		Sag	2	0.000		2	0	0.000
30		219.7		Crack-Horizontal	2	0.002		2	0	0.002

## Video Inspection Master Report

11/2/2012  
1:44 PM

**US Structure:** 6047-225      **220 S BONNIE BRAE ST**      **Date Insp:** 2/10/2010      **Basin:** E01G2  
**DS Structure:** 6047-224      **238 S BONNIE BRAE ST**      **Dir Televised:** Upstream To Downstream

Obs. #	VTR	Counter	Distance	Location	Description	Rating	Obsvd (gpm)	Est. (gpm)	Ratings Struct	Clean	Remain (gpm)
31			226.1		Sag	1	0.000		1	0	0.000
32			226.1		Sag	1	0.000		1	0	0.000
33			221.3		Sag	4	0.000		10	0	0.000
34			230.3		Sag	2	0.000		2	0	0.000
35			233.1		Sag	3	0.000		5	0	0.000
36			236.2		Sag	1	0.000		1	0	0.000
37			236.3		Sag	1	0.000		1	0	0.000
38			242.4		Crack-Horizontal	1	0.001		1	0	0.001
39			246.5		Sealed Off Wye	1	0.000		0	0	0.000
40			248.5		Invert / Broken Pipe	3	0.010		60	0	0.010
41			248.2		Camera Blocked	5	0.000		0	0	0.000

**REVERSE SETUP:**

Obs. #	VTR	Counter	Distance	Location	Description	Rating	Obsvd (gpm)	Est. (gpm)	Ratings Struct	Clean	Remain (gpm)
1			0.0		6047-224 / DS Manhole / TV against flow						
2			0.0		Crack-Horizontal	2	0.002		2	0	0.002
An internal CIPP sleeve repair was installed by Sewer Maintenance from the manhole to 6' north of the manhole.											
3			23.5		Sag	2	0.000		2	0	0.000
4			25.2		Sag	4	0.000		10	0	0.000
5			32.1		Sag	1	0.000		1	0	0.000
6			32.1		Sag	1	0.000		1	0	0.000
16			33.5		Broken Pipe	2	0.008		44	0	0.008
7			55.5		Broken Pipe	4	0.030		78	0	0.030
8			55.5		Stopped Inspection	5	0.000		0	0	0.000
9			53.1		Crack-Horizontal	3	0.004		5	0	0.004
10			42.7		Sag	3	0.000		5	0	0.000
15			43.6		Crack-Horizontal	2	0.002		2	0	0.002
11			46.6		Pipe is out of round with cracks	3	0.010		60	0	0.010
14			49.5		Crown has shifted pipe	3	0.010		60	0	0.010
12			55.3		Sag	1	0.000		1	0	0.000

CONTRACTOR TO REVIEW WITH PRE-TELEVISIONG. ADVISE THE FIELD ENGINEER IF LINER CANNOT BE INSTALLED WHERE THE BROKEN PIPE IS LOCATED.

## Video Inspection Master Report

11/2/2012  
1:44 PM

**US Structure:** 6047-224      **238 S BONNIE BRAE ST**      **Date Insp.:** 2/11/2010      **Basin:** E01G2  
**DS Structure:** 6047-223      **256 S BONNIE BRAE ST**      **Dir Televised:** Upstream To Downstream

**Pipe Information**

<b>Shape:</b>	Round	<b>Length Status:</b>	VCP
<b>Dia/Ht:</b>	8	<b>Material:</b>	0.005
<b>Length:</b>	314.4	<b>Slope:</b>	DVD #0554
		<b>Project No. :</b>	G-164

Obs. #	VTR	Counter	Distance	Location	Description	Rating	Ratings				
							Obsrvd (gpm)	Est. (gpm)	Struct	Clean	Remain (gpm)
1			0.0		US Manhole	1	0.000	0.000	0	0	0.000
2			1.3		Broken Pipe	2	0.008	0.008	44	0	0.008
3			6.0		Broken Pipe	2	0.008	0.008	44	0	0.008
4			9.2	238 S BONNIE BRAE	Break-In Conn	3	0.004	0.004	2	0	0.004
5			11.7		Crack-Horizontal	2	0.002	0.002	2	0	0.002
6			14.9		Crack-Horizontal	2	0.002	0.002	2	0	0.002
7			18.6		Crack-Horizontal	1	0.001	0.001	1	0	0.001
8			39.9		Sealed Off Wye	1	0.000	0.000	0	0	0.000
9			41.7		Broken Pipe	2	0.008	0.008	44	0	0.008
10			44.5		Crack-Horizontal	3	0.004	0.004	5	0	0.004
11			47.7		Crack-Horizontal	3	0.004	0.004	5	0	0.004
12			50.8		Crack-Horizontal	3	0.004	0.004	5	0	0.004
13			53.6		Crack-Horizontal	3	0.004	0.004	5	0	0.004
14			68.3		Broken Pipe	2	0.008	0.008	44	0	0.008
15			83.5		Broken Pipe	2	0.008	0.008	44	0	0.008
16			86.7		Crack-Horizontal	2	0.002	0.002	2	0	0.002
17			101.6		Crack-Horizontal	2	0.002	0.002	2	0	0.002
18			121.2	244 S BONNIE BRAE	Break-In Conn	1	0.001	0.001	0	0	0.001
19			146.8		Sealed Off Wye	1	0.000	0.000	0	0	0.000
20			236.5	250 S BONNIE BRAE	PVC Break-In Conn	1	0.001	0.001	0	0	0.001
21			257.4		Sealed Off Wye	1	0.000	0.000	0	0	0.000
22			269.0		Crack-Radial	3	0.004	0.004	5	0	0.004
23			309.2		6047-223 / DS Manhole						