

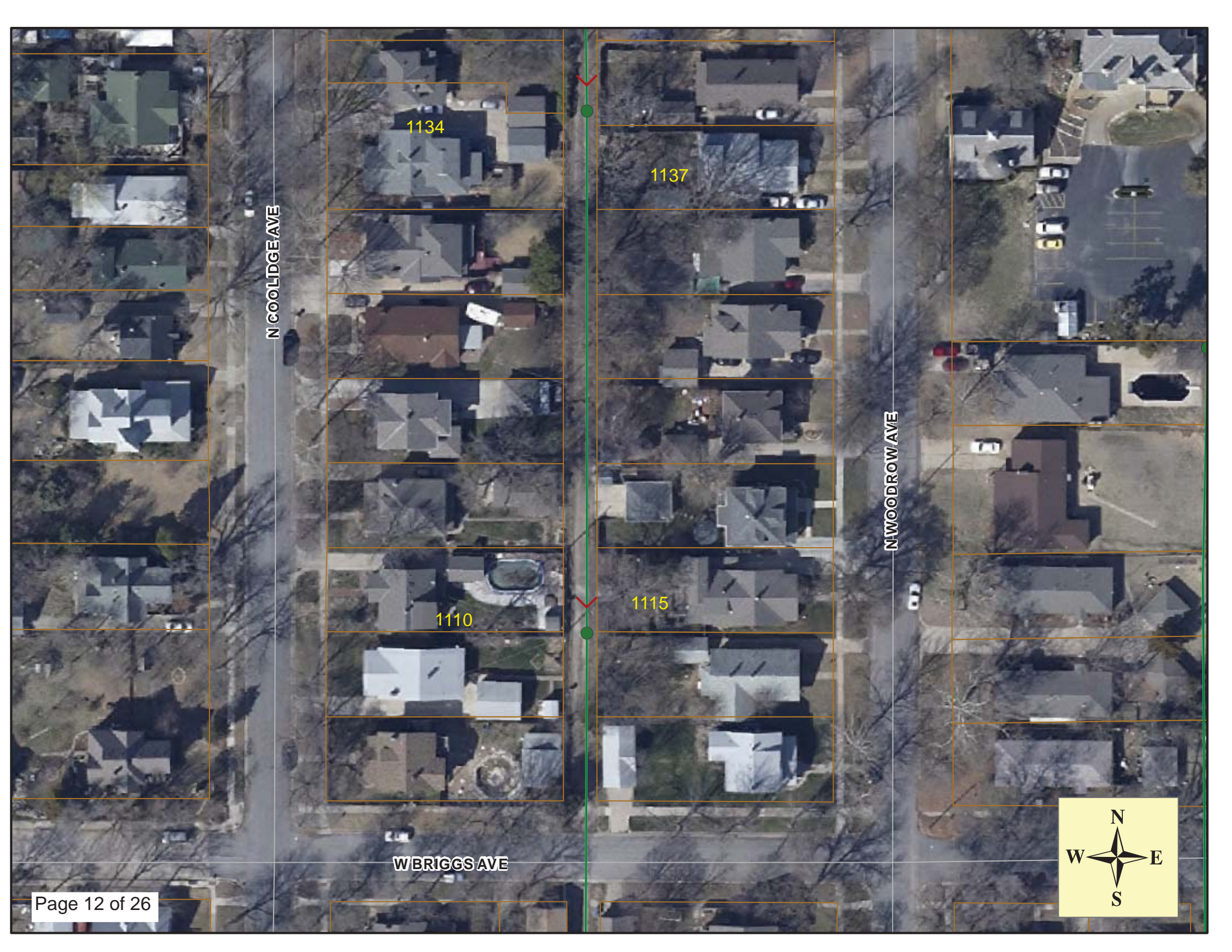
MH 5348-112
Remove Manhole
Construct Shallow Manhole (4')
Approx MH depth = 5.9 ft

MH 5348-109
Remove Manhole
Construct Standard Manhole (4')
Approx MH depth = 6.3 ft

Remove 309 lf of 8" Pipe
Install 309 lf of 8" Pipe

Estimated 12 Service Reconnections (4")

SITE 2



N COOLIDGE AVE

N WOODROW AVE

W BRIGGS AVE

1134

1137

1110

1115





Television Inspection Master Report

8/13/2010
10:55 AM

US Structure: 5348-112 1140 N COOLLIDGE ST Date Insp: 5/24/2010 Basin: C03E
 DS Structure: 5348-109 1115 N WOODROW ST Dir Televised: Upstream To Downstream

Pipe Information

Project No. : B-223 Material: VCP Crew: 690
 Dia/Ht: 8 Slope: 0.001 Tape ID: DVD #0585
 Length: 308.9

Obs. #	VTR Counter	Distance	Location	Description	Rating	Ratings				
						Obsrvd (gpm)	Est. (gpm)	Struct Clean	Remain (gpm)	
1		0.0		5348-112 US Manhole	2					
2		15.6		Sag ends	2	0.000	0.000	2	0	
3		17.1	1134 N COOLLIDGE	Wye Service	1	0.000	0.000	0	0	
4		17.9		Sag begins	3	0.000	0.000	5	0	
5		19.4		Wye Service	1	0.000	0.000	0	0	
6		58.1		Sag ends	2	0.000	0.000	2	0	
7		66.1		Broken Pipe	3	0.010	0.010	60	0	
8		66.8	1132 N COOLLIDGE	Break-In Conn	3	0.004	0.004	2	0	
9		68.5		Sag	3	0.000	0.000	5	0	
10		70.3	1127 N WOODROW	Wye Service	3	0.000	0.000	2	0	
				Chunk of pipe missing in the clay wye						
11		138.4		Sag	1	0.000	0.000	1	0	
12		143.3	1126 N COOLLIDGE	Wye Service	1	0.000	0.000	0	0	
13		145.6		Wye Service	1	0.000	0.000	0	0	
14		158.5		Sag	3	0.000	0.000	5	0	
15		163.6		Sag	1	0.000	0.000	1	0	
16		167.0		Crack-Radial	2	0.002	0.002	2	0	
17		168.7		Wye Service	1	0.000	0.000	0	0	
18		171.0		Wye Service	1	0.000	0.000	0	0	
19		171.0		Sag begins	3	0.000	0.000	5	0	
20		174.6		Sag ends	1	0.000	0.000	1	0	
21		174.9		Crack-Radial	2	0.002	0.002	2	0	
22		177.2		Crack-Radial	2	0.002	0.002	2	0	
23		180.0		Crack-Radial	2	0.002	0.002	2	0	
24		182.3		Crack-Radial	2	0.002	0.002	2	0	



Television Inspection Master Report

8/13/2010
10:55 AM

US Structure:	5348-112	1140 N COOLLIDGE ST	Date Insp:	5/24/2010	Basin:	C03E		
DS Structure:	5348-109	1115 N WOODROW ST	Dir Televised:	Upstream To Downstream				
25	184.6		Sag	4	0.000	10	0	0.000
26	187.5		Sag	1	0.000	1	0	0.000
27	190.5		Sag	3	0.000	5	0	0.000
28	199.4		Sag	1	0.000	1	0	0.000
29	205.4		Observation Hole	1	0.000	0	0	0.000
30	207.8		Crack-Radial	2	0.002	2	0	0.002
31	218.1		Broken Pipe	2	0.008	44	0	0.008
32	218.6		Break-In Conn	3	0.004	2	0	0.004
1118 N COOLLIDGE								
33	220.3		Crack-Radial	2	0.002	2	0	0.002
34	221.8		Wye Service	1	0.000	0	0	0.000
1117 N WOODROW								
35	233.0		Crack-Horizontal	2	0.002	2	0	0.002
36	243.4		Crack-Radial	2	0.002	2	0	0.002
37	244.7		Wye Service	1	0.000	0	0	0.000
38	245.8		Crack-Radial	2	0.002	2	0	0.002
39	247.3		Wye Service	1	0.000	0	0	0.000
40	258.5		Crack-Radial	1	0.001	1	0	0.001
41	266.1		Crack-Radial	2	0.002	2	0	0.002
42	268.7		Crack-Horizontal	2	0.002	2	0	0.002
43	270.3		Wye Service	1	0.000	0	0	0.000
44	271.4		Crack-Radial	2	0.002	2	0	0.002
45	272.8		Wye Service	1	0.000	0	0	0.000
46	274.0		Crack-Radial	2	0.002	2	0	0.002
47	291.8		Crack-Radial	2	0.002	2	0	0.002
48	294.4		Crack-Radial	2	0.002	2	0	0.002
49	295.1		Wye Service	2	0.000	0	0	0.000
1110 N COOLLIDGE / roots inside								
50	296.9		Crack-Radial	2	0.002	2	0	0.002
51	298.1		Wye Service	2	0.000	0	0	0.000
1115 N WOODROW								
52	301.7		Crack-Radial	2	0.002	2	0	0.002
53	305.4		Sag	3	0.000	5	0	0.000
54	308.6		5348-109 DS Manhole					

LINE HAS LOTS OF CRACKS. / the log could me missing some of the service tap locations