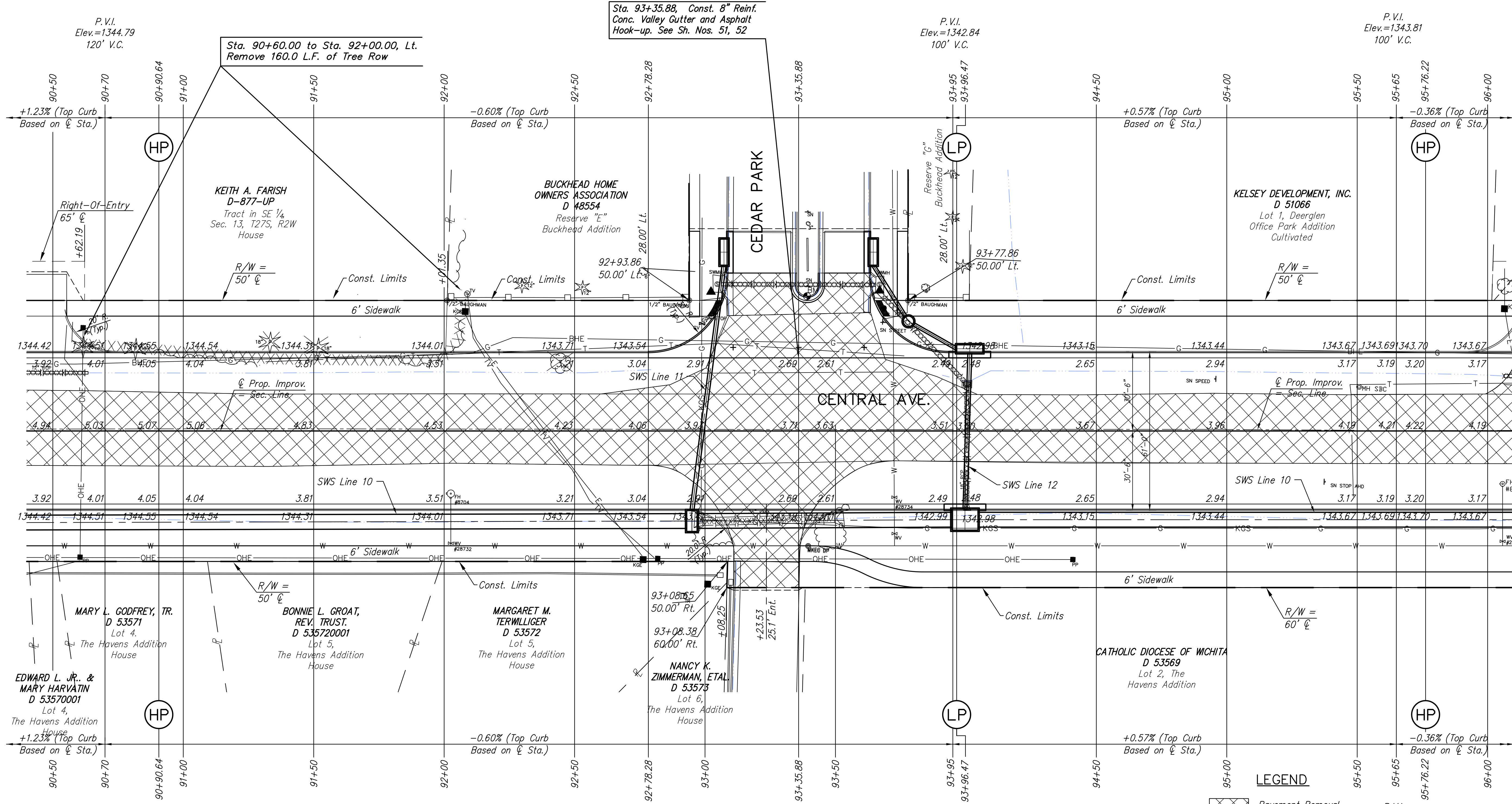


SE 1/4 Sec. 13, T27S, R2W



NE 1/4 Sec. 24, T27S, R2W

| UTILITY ADJUSTMENTS | | | | |
|---------------------|------------|--------------------|--------------------|-------------|
| STATION | OFFSET | EXISTING ELEVATION | PROPOSED ELEVATION | REMARKS |
| 92+02.56 | 43.00' Rt. | 1341.90 | 1344.90 | Water Valve |
| 92+98.76 | 41.05' Lt. | 1344.12 | 1343.46 | Gas Valve |
| 93+72.62 | 39.31' Rt. | 1340.66 | 1343.57 | Water Valve |
| 93+72.57 | 25.40' Rt. | 1341.12 | 1342.81 | Water Valve |

BM#21 Chiseled square on top of curb at South end of median island on Cedar Park, 52' North of centerline Central. Sta. 93+39.14, 51.64' Lt. Elev.=1344.27

- LEGEND**
- Pavement Removal
 - Brick Pavers
 - Construct Wheelchair Ramp See Sh. No. 57
 - xxxxxxx SWS Removal
 - Light-Stone Rip-Rap See Sh. 129
 - Tree Row Removal See Sh. 86

**CENTRAL AVENUE
IMPROVEMENTS FROM
135TH ST. W. TO 119TH ST. W.**

**PAVING PLAN
STA. 90+50
TO
STA. 96+00**
SHEET TITLE
472-84017
PROJECT NUMBER

JRA
DESIGN BY
WNU
DRAWN BY
JRA
CHECKED BY

ISSUED
November 9, 2012
REVISED

SHEET NO.
14 of 220