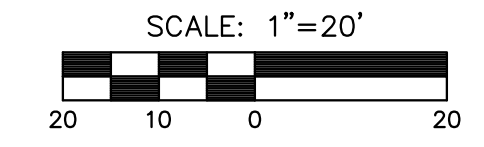


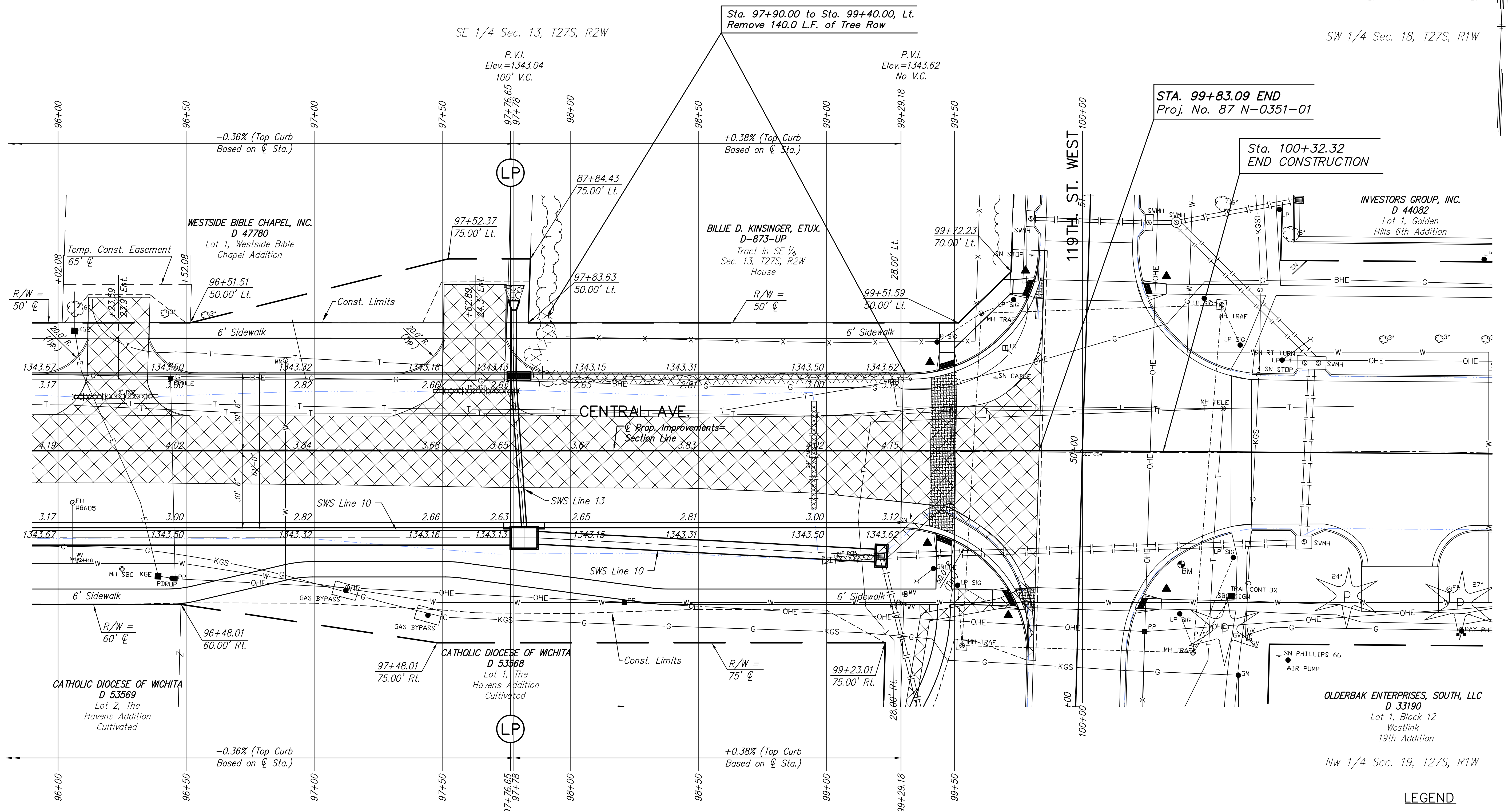
P.I. Sta. 100+00.00, 0.00' Rt. Central Ave.  
 Southwest Corner Sec. 18, T27S, R1W  
 1. N= 1688038.37 E = 1607457.31

STATE	PROJECT NO.	YEAR	SHEET NO.	SHEETS
KANSAS	87 N-0351-01	2012	15	220

**MKEC**  
 ENGINEERING  
 CONSULTANTS, INC.  
 411 N. WEBB ROAD  
 WICHITA, KS. 67206  
 316-684-9600



SW 1/4 Sec. 18, T27S, R1W



STA. 99+83.09 END  
 Proj. No. 87 N-0351-01

Sta. 100+32.32  
 END CONSTRUCTION

**CENTRAL AVENUE  
 IMPROVEMENTS FROM  
 135TH ST. W. TO 119TH ST. W.**

UTILITY ADJUSTMENTS				
STATION	OFFSET	EXISTING ELEVATION	PROPOSED ELEVATION	REMARKS
96+05.73	42.27' Rt.	1341.32	1344.18	Water Valve
96+88.81	35.29' Lt.	1344.40	1343.93	Water Meter
99+28.28	59.26' Rt.	1344.76	1344.63	Water Valve
99+30.26	59.92' Rt.	1344.78	1344.49	Water Valve
99+30.88	55.91' Rt.	1344.73	1344.59	Water Valve
99+60.50	53.761' Lt.	1344.34	1344.00	MH, Traffic

- West Quarter Corner Sec. 18, T27S, R1W  
 Sta. 76+42.16, 0.00' Rt. 119th St. W.
- 5/8" bar in thimble.
  - N = 1690680.49 E = 1607442.51
  - 1/2" bar and Baughman cap
  - Chiseled "X" on top of curb
  - Chiseled "X" on top of curb
  - Chiseled "X" in flow line of curb
- 50.15' W  
 31.35' E  
 42.05' SW  
 27.95' W

- Southwest Corner Sec. 18, T27S, R1W  
 Sta. 100+00.00, 0.00' Rt. Central Ave.
- N = 1688038.37 E = 1607457.31
  - 3/4" pipe in thimble
  - Center of City of Wichita benchmark disc
  - Chiseled "X" on top of curb
  - Chiseled "X" on top of curb
- 41.98' NW  
 49.10' S  
 34.36' NNE  
 85.48' SE

South Quarter Corner Sec. 18, T27S, R1W  
 Sta. 125+19.89, 0.00' Rt. Central Ave.

- 3/4" pipe in thimble.
- N = 1688114.40 E = 1609976.05
- Chiseled "X" on top of curb
- Nail and shiner in East face power pole
- Mag nail and washer in NW face of power pole
- 3 nails in NE face of power pole

41.98' NW  
 49.10' S  
 34.36' NNE  
 85.48' SE

- LEGEND**
- Pavement Removal
  - Brick Pavers
  - Construct Wheelchair Ramp See Sh. No. 57
  - SWS Removal
  - Light-Stone Rip-Rap See Sh. 129
  - Tree Row Removal See Sh. 86

PLOTTED: Wednesday, November 14, 2012 @ 01:45PM

L:\Civil\04238\dwg\pav\04238e11.dwg

**PAVING PLAN  
 STA. 96+00  
 TO  
 STA. 101+50**  
 SHEET TITLE  
 472-84017  
 PROJECT NUMBER

JRA  
 DESIGN BY  
 WNU  
 DRAWN BY  
 JRA  
 CHECKED BY

ISSUED  
 November 9, 2012  
 REVISED

SHEET NO.  
**15 of 220**