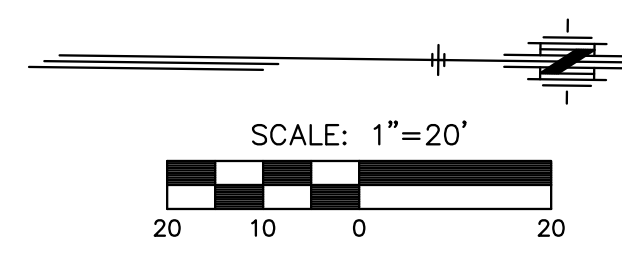


- P.I. Sta. 23+56.10, 0.00' Rt. 135th St. W.
- 3/4" pipe over stone
 - N = 1685231.01 E = 1602274.63
 - Line of hedge to West
 - Head of 60d nail in blazed Hedge tree 23.25' W
 - 3 nails in West face high line pole 63.00' NNE
 - Bottom of bent 1.5" iron pipe 50.15' E
 - SW corner of column of concrete wall 49.70' NE

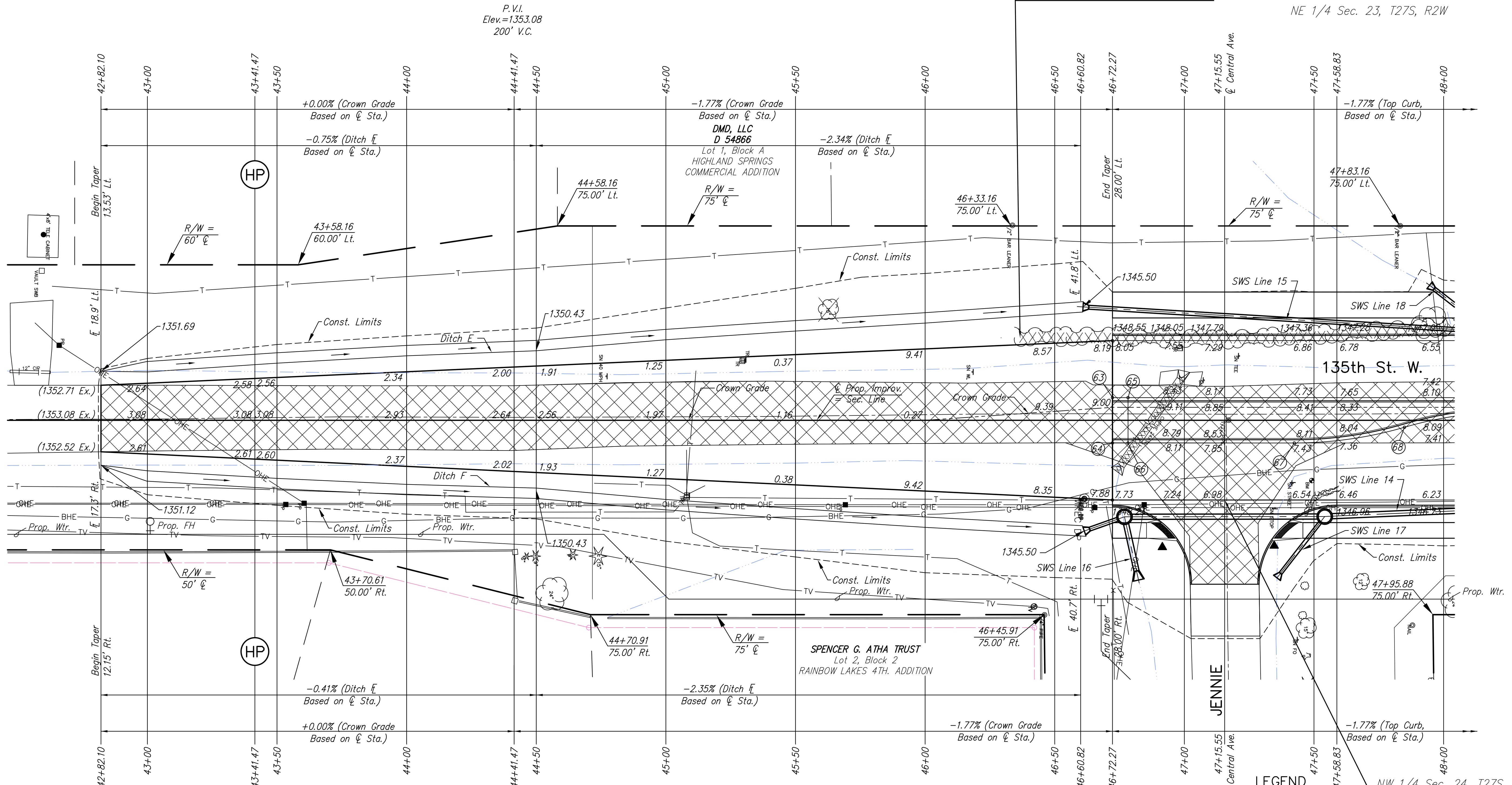
- P.I. Sta. 50+00.00, 0.00' Rt. 135th St. W.
- 3/4" pipe with Sedgwick County Cap cast in concrete. N = 1687874.69 E = 1602240.60
 - 3 nails in Northwest face of a high line pole 48.45' NE
 - 3 nails in South face of a fence corner post 21.95' E
 - Chiseled "X" on hub guard of reinforced box culvert 150.00' NNW
 - Chiseled "X" on hub guard of reinforced box culvert 150.00' NNE
 - Mag nail and washer in South face of a power pole 74.03' WNW

STATE	PROJECT NO.	YEAR	SHEET NO.	SHEETS
KANSAS	87 N-0351-01	2012	16	220

MKEC
ENGINEERING
CONSULTANTS, INC.
411 N. WEBB ROAD
WICHITA, KS. 67206
316-684-9600



NE 1/4 Sec. 23, T27S, R2W



- West Quarter Corner Sec. 24, T27S, R2W
Sta. 23+56.10, 0.00' Rt. 135th St. W.
- 3/4" pipe over stone
 - N = 1685231.01 E = 1602274.63
 - Line of hedge to West
 - Head of 60d nail in blazed Hedge tree 23.25' W
 - 3 nails in West face high line pole 63.00' NNE
 - Bottom of bent 1.5" iron pipe 50.15' E
 - SW corner of column of concrete wall 49.70' NE

- Southwest corner Sec. 13, T27S, R2W
Sta. 47+80.62, 0.00' Rt. Central Ave.
- 3/4" pipe with Sedgwick County Cap cast in concrete. N = 1687874.69 E = 1602240.60
 - 3 nails in Northwest face of a high line pole 48.45' NE
 - 3 nails in South face of a fence corner post 21.95' E
 - Chiseled "X" on hub guard of reinforced box culvert 150.00' NNW
 - Chiseled "X" on hub guard of reinforced box culvert 150.00' NNE
 - Mag nail and washer in South face of a power pole 74.03' WNW

UTILITY ADJUSTMENTS

STATION	OFFSET	EXISTING ELEVATION	PROPOSED ELEVATION	REMARKS
N/A	N/A	N/A	N/A	

MEDIAN LOCATION

POINT NO.	STATION	OFFSET	ELEVATION	
			FLOWLINE	TOP CURB
63	46+72.27	8.75' Lt.	1348.92	1348.93
64	46+72.27	8.75' Rt.	1348.60	1348.61
65	46+78.27	8.75' Lt.	1348.81	1349.49
66	46+78.27	8.75' Rt.	1348.49	1349.17
67	47+42.42	8.75' Rt.	1347.49	1348.17
68	47+84.91	2.68' Rt.	1347.34	1348.02

BM#13 City of Wichita benchmark disc on Northeast corner of 135th Street West and Central.
Sta. 47+49.04, 23.28' Rt. Elev.=1347.40

- LEGEND**
- Pavement Removal
 - Brick Pavers
 - Construct Wheelchair Ramp See Sh. No. 57
 - SWS Removal
 - Light-Stone Rip-Rap See Sh. 129
 - Tree Row Removal See Sh. 86

Sta. 47+15.55 Const. 8" Reinf. Conc. Valley Gutter and Asphalt Hook-up. See Sh. Nos. 51, 52

**CENTRAL AVENUE
IMPROVEMENTS FROM
135TH ST. W. TO 19TH ST. W.**

**PAVING PLAN
STA 42+82.10
TO
STA 48+00**
SHEET TITLE
472-84017
PROJECT NUMBER

JRA
DESIGN BY
WNJ
DRAWN BY
JRA
CHECKED BY

ISSUED
November 9, 2012
REVISED

SHEET NO.
16 of 220

PLOTTED: Wednesday, November 14, 2012 @ 01:45PM

L:\Civil\042381.dwg\pave\04238612.dwg