

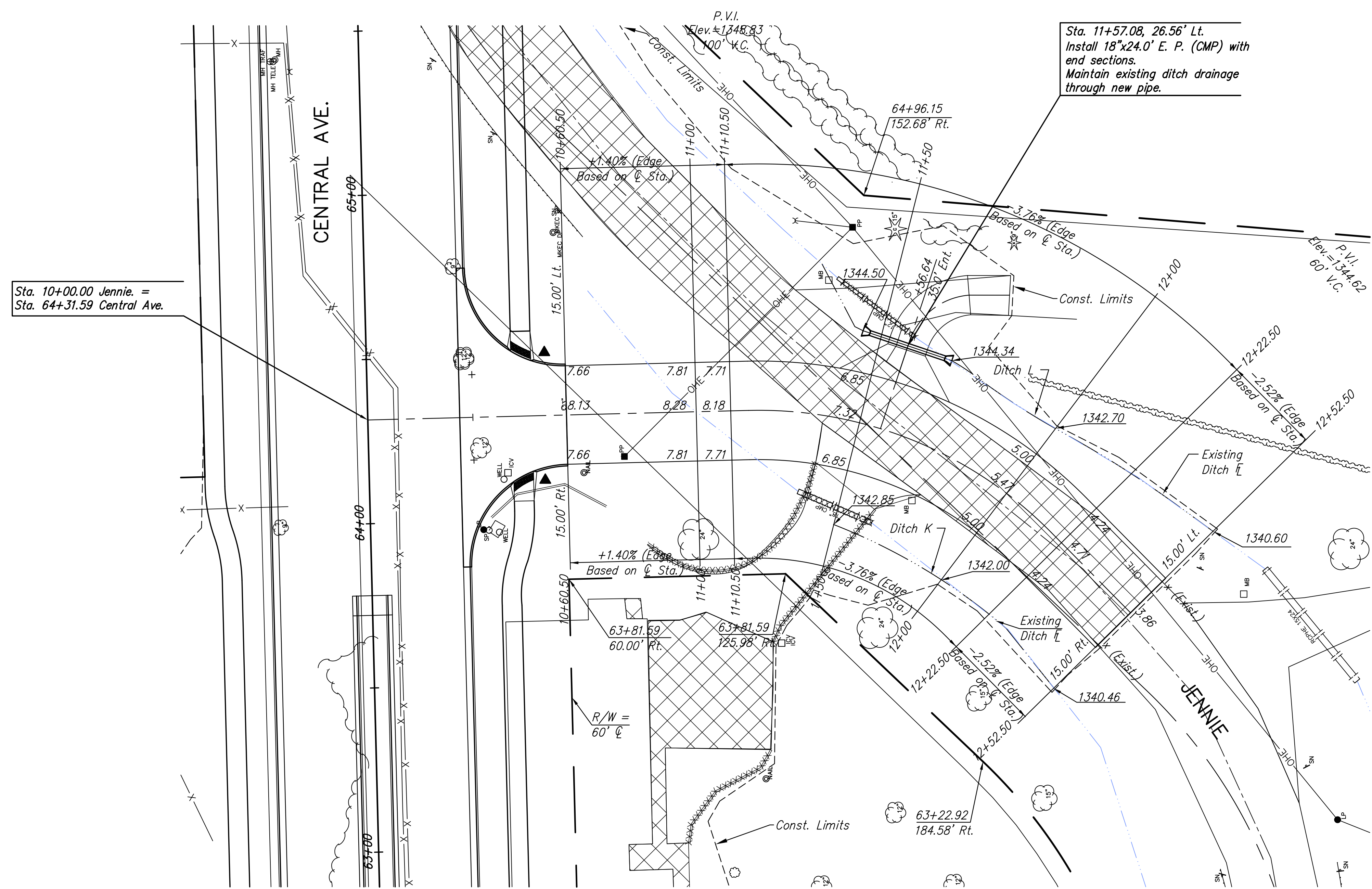
**CENTRAL AVENUE
IMPROVEMENTS FROM
135TH ST. W. TO 119TH ST. W.**

**PAVING PLAN
STA 10+00.00
TO
STA 12+52.50**
SHEET TITLE
472-84017
PROJECT NUMBER

DESIGN BY: JRA
DRAWN BY: WNJ
CHECKED BY: JRA

ISSUED: November 9, 2012
REVISED:

SHEET NO.
19 of 220



Sta. 10+00.00 Jennie. =
Sta. 64+31.59 Central Ave.

Sta. 11+57.08, 26.56' Lt.
Install 18"x24.0' E. P. (CMP) with
end sections.
Maintain existing ditch drainage
through new pipe.

- LEGEND**
- Pavement Removal
 - Brick Pavers
 - Construct Wheelchair Ramp
See Sh. No. 57
 - xxxxxxx · SWS Removal
 - Light-Stone Rip-Rap
See Sh. 129
 - Tree Row Removal
See Sh. 86

UTILITY ADJUSTMENTS				
STATION	OFFSET	EXISTING ELEVATION	PROPOSED ELEVATION	REMARKS
N/A	N/A	N/A	N/A	