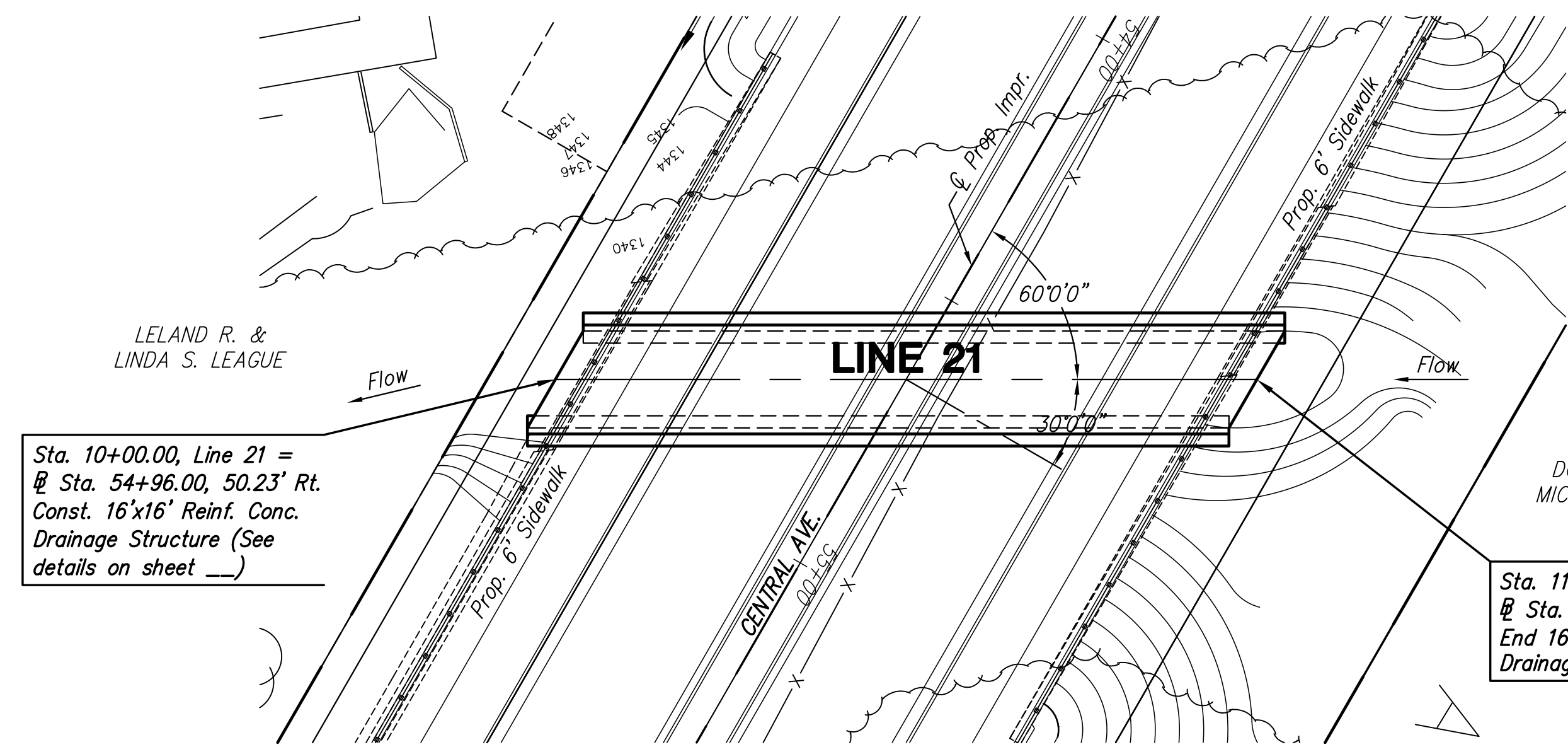
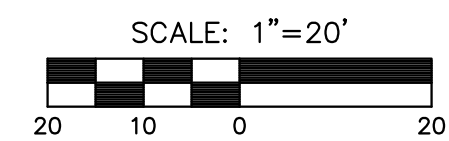
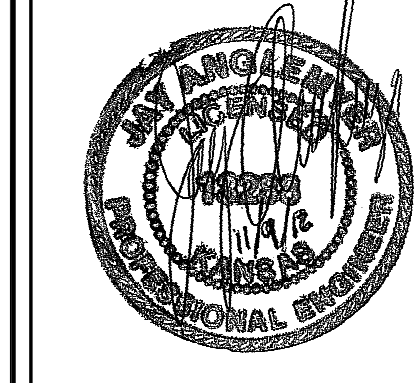


STATE	PROJECT NO.	YEAR	SHEET NO.	SHEETS
KANSAS	87 N-0351-01	2012	35	220

**MKEC**  
ENGINEERING  
CONSULTANTS, INC.

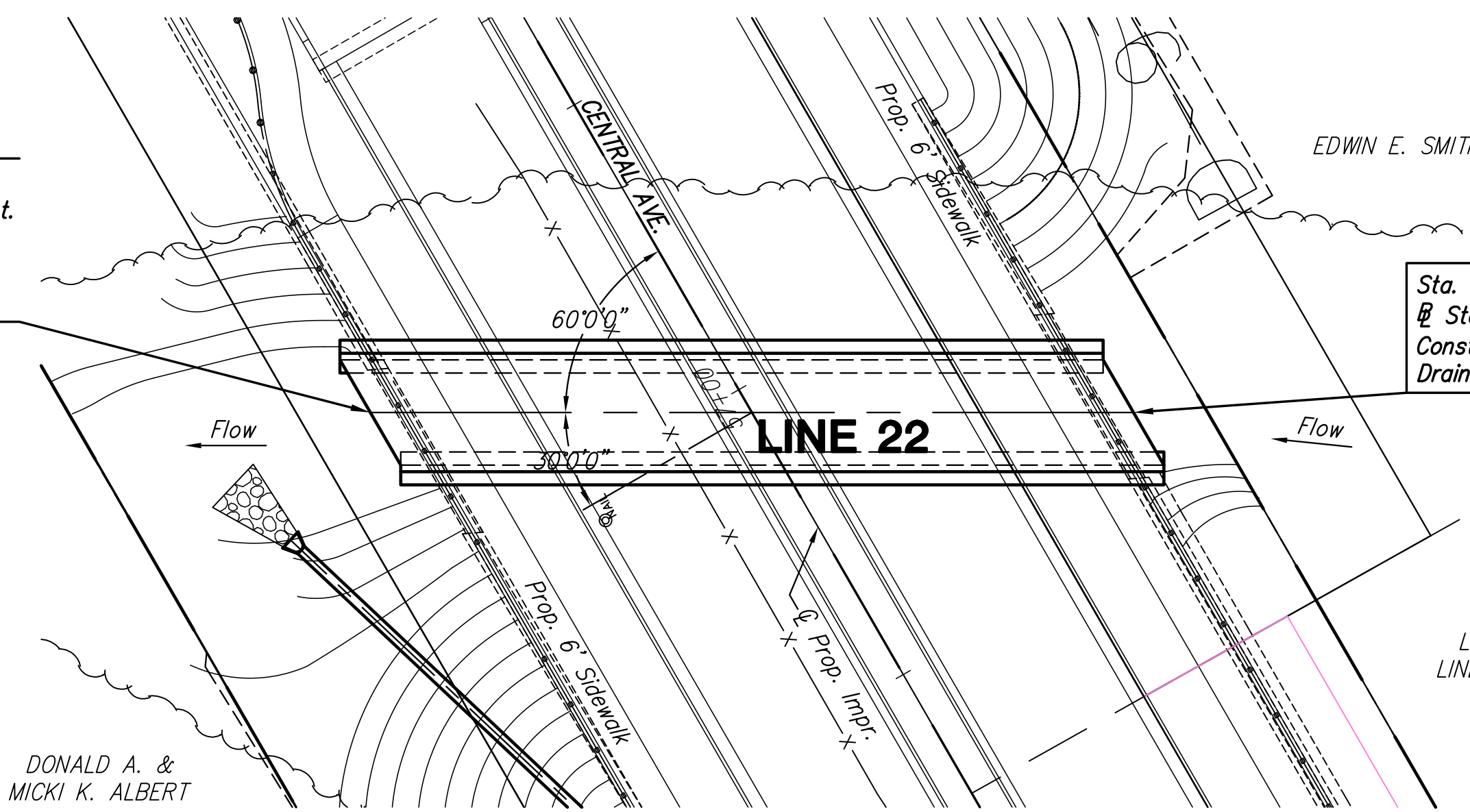
411 N. WEBB ROAD  
WICHITA, K.S. 67206  
316-684-9600



Sta. 10+00.00, Line 22 =  
@ Sta. 57+25.00, 50.23' Lt.  
Const. 16'x16' Reinf. Conc.  
Drainage Structure (See  
details on sheet \_\_\_)

Sta. 10+00.00, Line 21 =  
@ Sta. 54+96.00, 50.23' Rt.  
Const. 16'x16' Reinf. Conc.  
Drainage Structure (See  
details on sheet \_\_\_)

Sta. 11+16.00, Line 21 =  
@ Sta. 54+38.00, 50.23' Lt.  
End 16'x16' Reinf. Conc.  
Drainage Structure



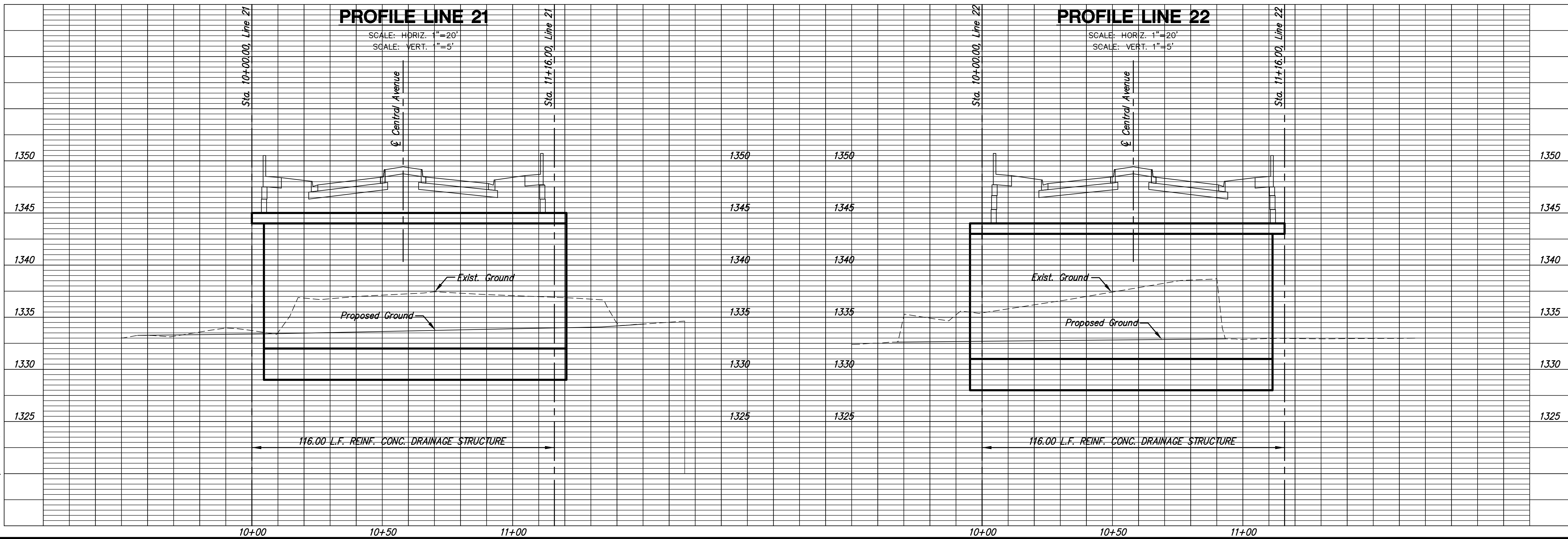
Sta. 11+16.00, Line 22 =  
@ Sta. 56+67.00, 50.23' Rt.  
Const. 16'x16' Reinf. Conc.  
Drainage Structure

**PLAN LINE 21**

**PLAN LINE 22**

**PROFILE LINE 21**

**PROFILE LINE 22**



**CENTRAL AVENUE  
IMPROVEMENTS FROM  
135TH ST. W. TO 119TH ST. W.**

**DRAINAGE  
STRUCTURES  
LINES 21 & 22**

SHEET TITLE  
472-84017  
PROJECT NUMBER

DESIGN BY: JRA  
DRAWN BY: DMU  
CHECKED BY: JRA

ISSUED: November 9, 2012  
REVISED:

SHEET NO.  
35 of 220

PLOT DATE: Wednesday, November 14, 2012 @ 01:47PM

J:\Civil\04238.dwg SWS\04238\_SWS D-11.dwg