

STATE	PROJECT NO.	YEAR	SHEET NO.	SHEETS
KANSAS	87 N-0351-01	2012	36	220

**MKEC**  
ENGINEERING  
CONSULTANTS, INC.

411 N. WEBB ROAD  
WICHITA, K.S. 67206  
316-684-9600



**CENTRAL AVENUE  
IMPROVEMENTS FROM  
135TH ST. W. TO 119TH ST. W.**

**STORM  
SEWER  
LINES 23**

SHEET TITLE  
472-84017  
PROJECT NUMBER

DESIGN BY  
*JRA*

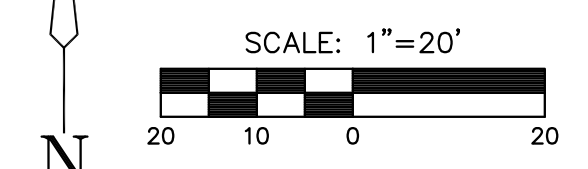
DRAWN BY  
*WNJ*

CHECKED BY  
*JRA*

ISSUED  
*November 9, 2012*

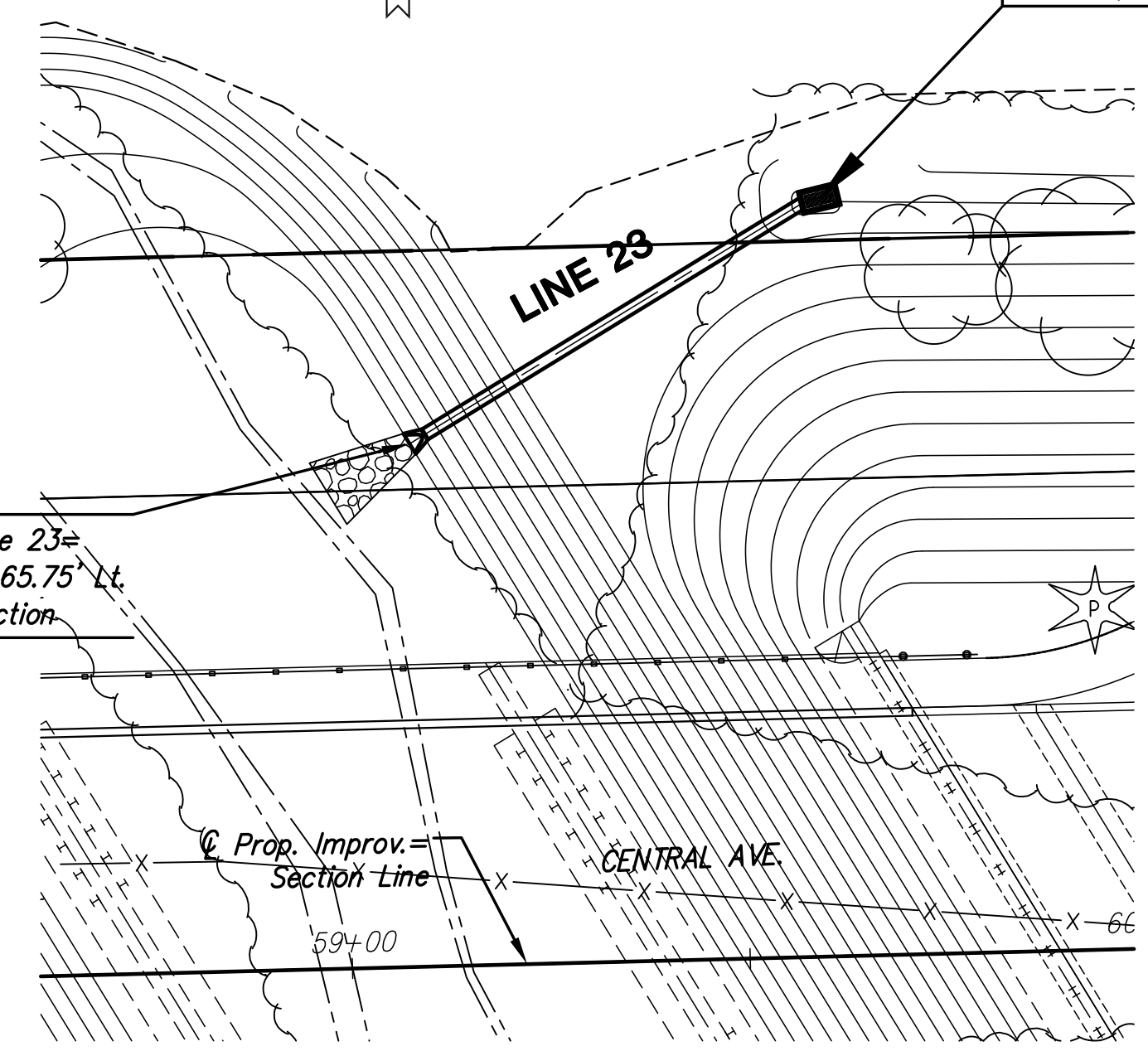
REVISED

SHEET NO.  
**36 of 220**



Sta. 10+61.07, Line 23=  
@ Sta. 56+61.07, 95.28' Lt.  
Const. Single Double Drop Inlet  
L=5'-0", W=3'-0"  
Inlet Top=1337.00

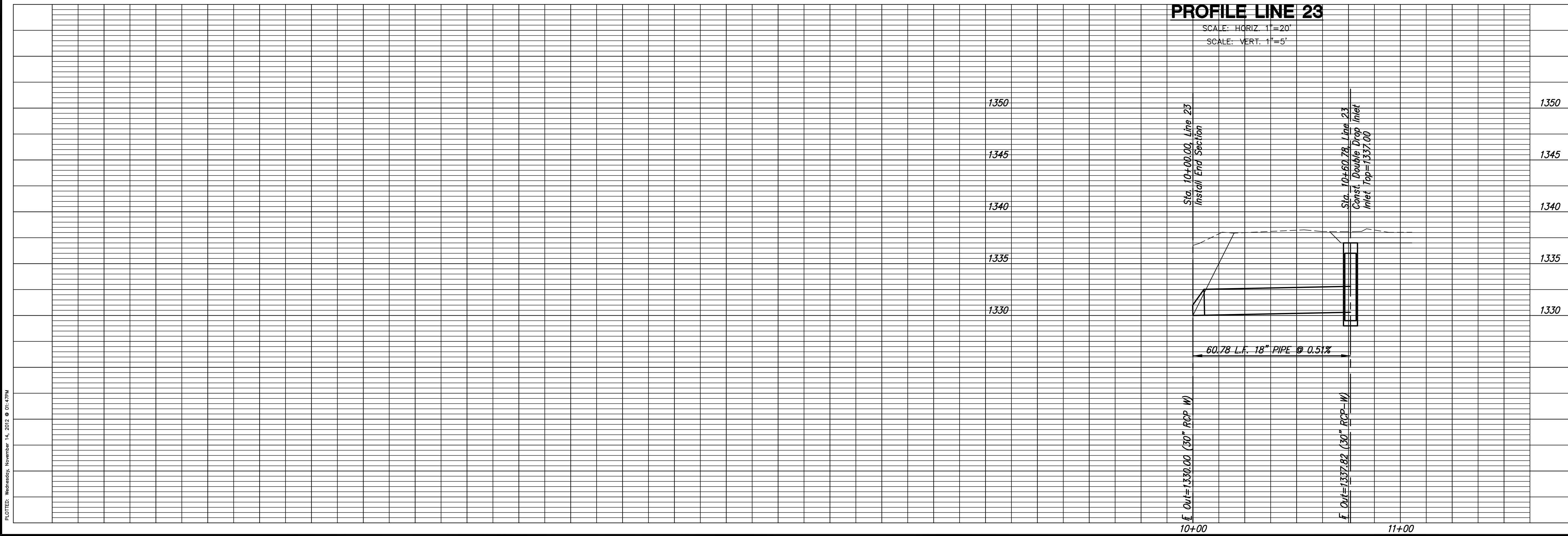
Sta. 10+00.00, Line 23=  
@ Sta. 59+08.83, 65.75' Lt.  
Install 24" End Section



**PLAN LINE 23**

**PROFILE LINE 23**

SCALE: HORIZ. 1"=20'  
SCALE: VERT. 1"=5'



PLOTED: Wednesday, November 14, 2012 @ 01:47PM

J:\Civil\04238.dwg SWS\04238 SWS D-12.dwg