

**CENTRAL AVENUE
IMPROVEMENTS FROM
135TH ST. W. TO 119TH ST. W.**

**CENTRAL AVE & 119TH ST. W.
INTERSECTION LAYOUT**

SHEET TITLE
472-84017
PROJECT NUMBER

DESIGN BY **JRA**
DRAWN BY **WNJ**
CHECKED BY **JRA**

ISSUED
November 9, 2012

REVISED

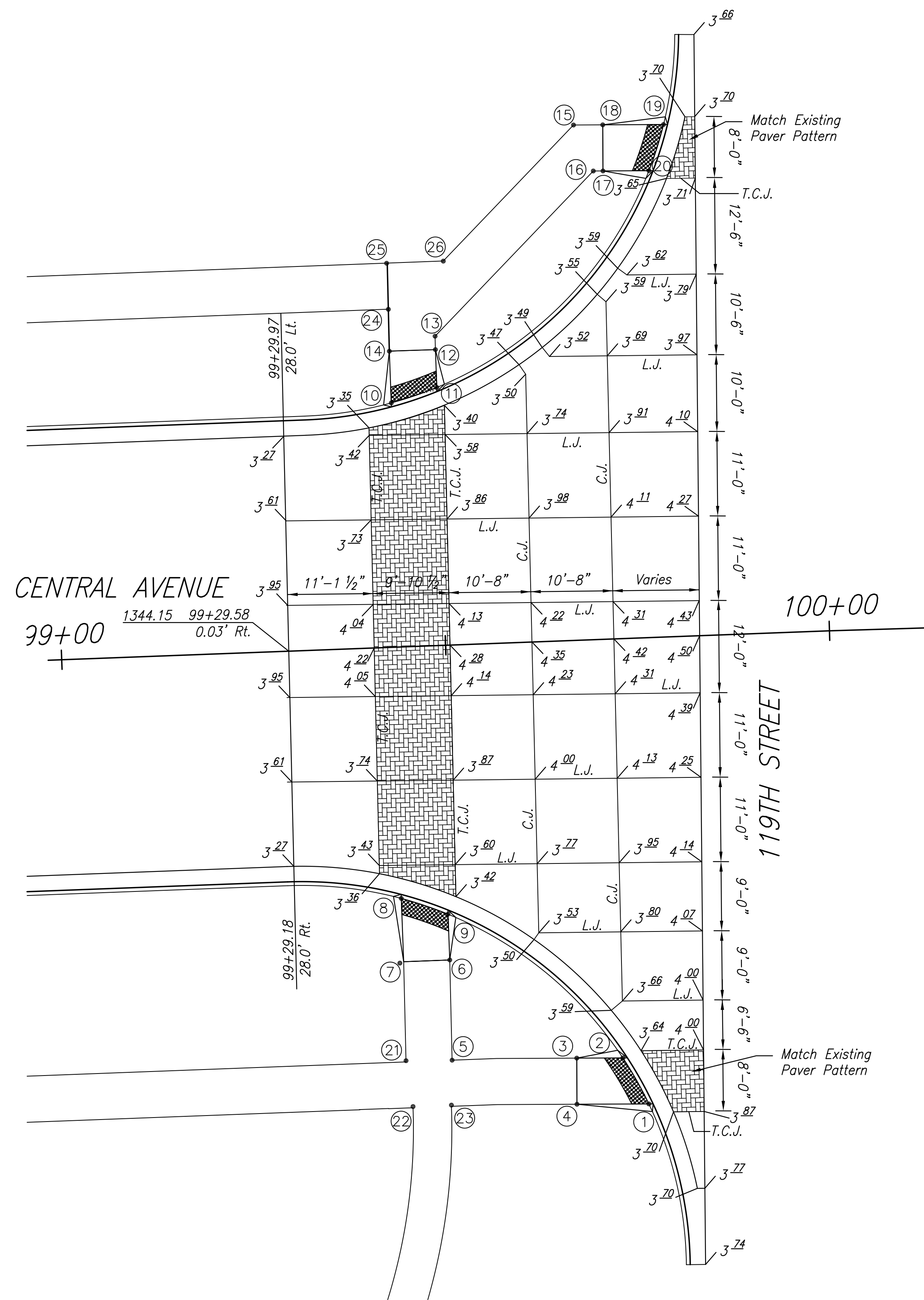
SHEET NO.
41 of 220

CROSSWALK NOTES:

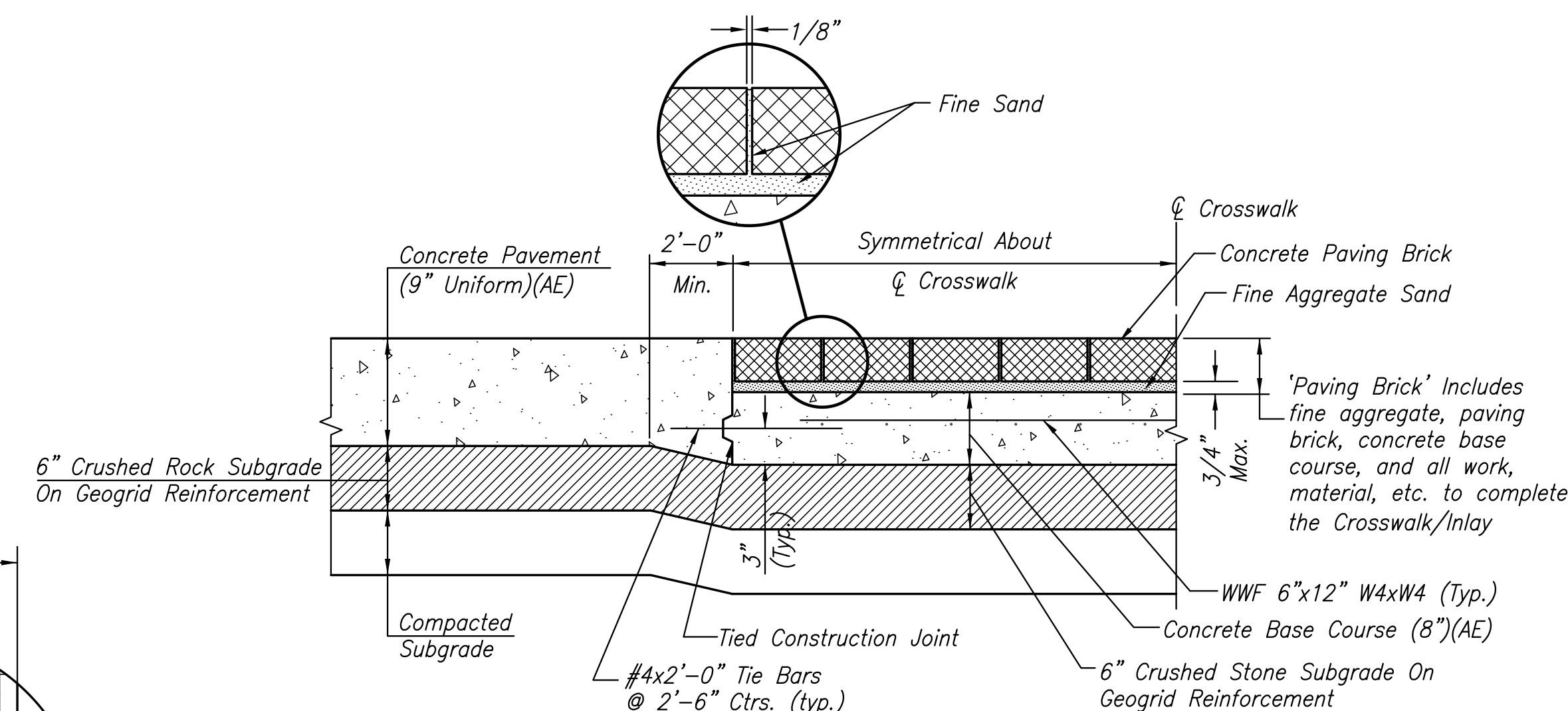
- Concrete unit pavers shall meet or exceed ASTM C 936. The style shall be "Holland Stone" (4"x8"x3 1/8") as manufactured by Pavestone, Inc., or equal as approved by the engineer. Color shall be "charcoal red" and laying pattern shall be herringbone. Payment shall be at the contract bid price per square foot for concrete unit pavers.
- 8 inch concrete pavement base course shall be subsidiary to the bid price for unit paver crosswalk.
- Sand bedding shall meet the specification requirements for fine aggregate. An uncompacted sand laying course shall be spread evenly over the area to be paved and then screeded to a level of approximately 3/4" max. thickness. Once screeded and leveled to the desired elevation, the sand laying course shall not be disturbed in any way.
- The paving brick shall be installed in a herringbone pattern as shown in the plan. Stones shall be placed with the chamfered side up, and joint spaces kept uniform approximately 1/8 inch thick. The gaps at the edge of the paved surface shall be filled with stones cut to fit. Cutting shall be accomplished to leave a clean edge toward the traffic surface, using a masonry saw. Whenever possible, no cuts should result with a paver less than one-third of its original dimension.
- Paving brick shall be vibrated to their final level in the sand laying course by two or three passes of a vibrating compactor capable of 3000 to 5000 pounds compaction force with the surface clean and joints open.
- After vibration, clean concrete sand shall be spread over the paving stone surface, allowed to dry, and vibrated into the joints with additional passes of the plate vibrator so as to completely fill the joints. A light coating of sand shall be swept over the completed surface and left to weather in.
- Warp Flowline of Gutter as necessary in curb return of Intersection to avoid creating sumps.
- See Sht. 40 for Intersection paving notes.



SCALE: 1"=10'



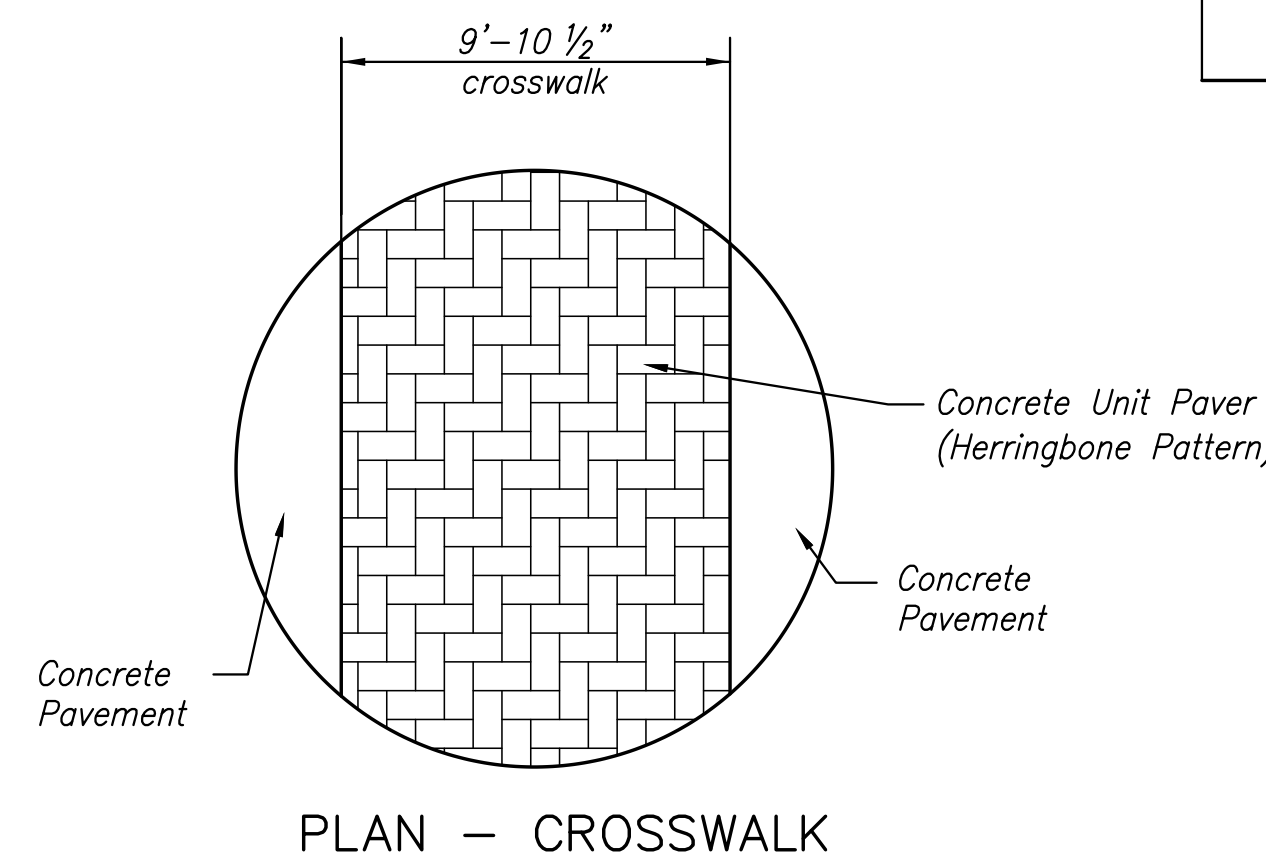
CENTRAL AVE. - 119TH ST. INTERSECTION PLAN



CROSSWALK DETAILS

RAMP AND SIDEWALK POINT TABLE

PT. NO.	STATION/OFFSET	NORTHING	EASTING	ELEV.	REMARKS
1	99+74.19, 60.65 Rt.	1687976.7884	1607433.8021	1343.63	SW Quadrant at BC
2	99+71.03, 54.55 Rt.	1687982.7734	1607430.4178	1343.58	SW Quadrant at BC
3	99+65.04, 54.35 Rt.	1687982.7466	1607424.4178	1343.84	SW Quadrant
4	99+64.84, 60.34 Rt.	1687976.7466	1607424.4446	1343.96	SW Quadrant
5	99+48.81, 54.00 Rt.	1687982.4820	1607408.1918	1344.07	SW Quadrant
6	99+49, 40.96 Rt.	1687995.5233	1607407.8854	1343.61	SW Quadrant
7	99+43, 40.96 Rt.	1687995.2972	1607401.8890	1343.73	SW Quadrant
8	99+43, 32.71 Rt.	1688003.5381	1607401.5784	1343.37	SW Quadrant at BC
9	99+49, 34.99 Rt.	1688001.4891	1607407.6605	1343.36	SW Quadrant at BC
10	99+44.12, 31.79 Lt.	1688068.0330	1607400.2756	1343.31	NW Quadrant at BC
11	99+50.13, 33.58 Lt.	1688070.0497	1607406.2044	1343.34	NW Quadrant at BC
12	99+50.13, 38.51 Lt.	1688074.9931	1607406.0181	1343.75	NW Quadrant
13	99+50.15, 40.26 Lt.	1688076.7227	1607405.9774	1343.82	NW Quadrant
14	99+44.13, 38.54 Lt.	1688074.7837	1607400.0213	1343.87	NW Quadrant
15	99+69.19, 67.05 Lt.	1688104.2112	1607423.9938	1344.24	NW Quadrant
16	99+71.54, 67.97 Lt.	1688098.2255	1607426.5692	1344.12	NW Quadrant
17	99+72.80, 67.93 Lt.	1688098.2326	1607427.8311	1344.06	NW Quadrant
18	99+72.99, 66.93 Lt.	1688104.2325	1607427.7975	1344.18	NW Quadrant
19	99+80.90, 66.67 Lt.	1688104.2768	1607435.7070	1343.63	NW Quadrant at BC
20	99+78.78, 60.74 Lt.	1688098.2661	1607433.8107	1343.60	NW Quadrant at BC
21	99+42.81, 54.00 Rt.	1687982.2559	1607402.1955	1344.19	SW Quadrant
22	99+43.50, 60.00 Rt.	1687976.2860	1607403.1064	1344.29	SW Quadrant
23	99+44.13, 38.54 Rt.	1687976.4743	1607408.1029	1344.19	SW Quadrant
24	99+44.20, 44.00 Lt.	1688080.2387	1607399.2932	1343.98	NW Quadrant
25	99+44.29, 50.00 Lt.	1688086.2377	1607399.7522	1344.10	NW Quadrant
26	99+51.59, 50.00 Lt.	1688086.5126	1607407.0451	1344.12	NW Quadrant
27					
28					
29					
30					
31					
32					



LEGEND

- T.C.J. Tied Construction Joint
- C.J. Contraction Joint
- D.C.J. Doweled Contraction Joint
- L.J. Longitudinal Joint
- 1.18 Surface Spot Elevation
- Direction of Surface Flow