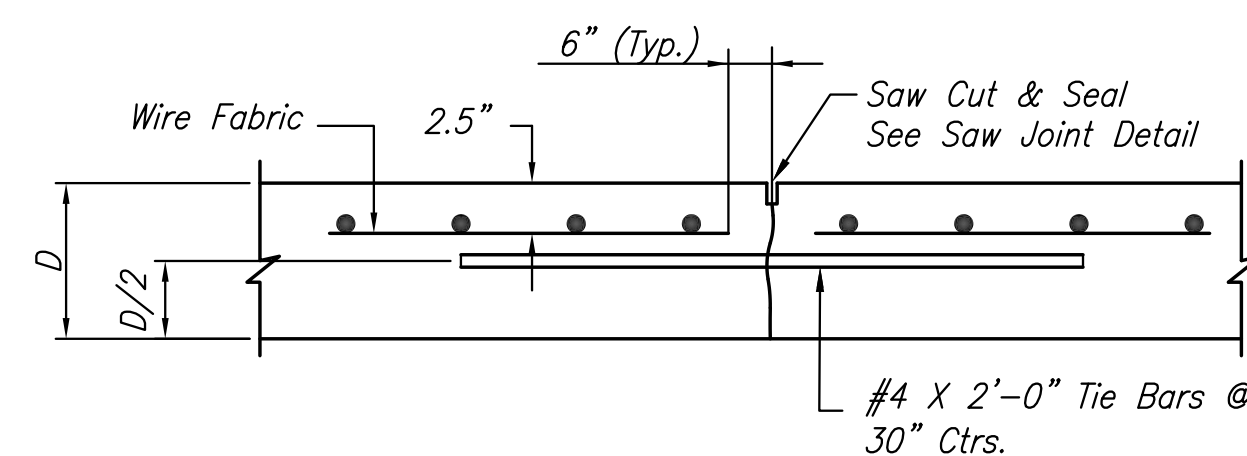
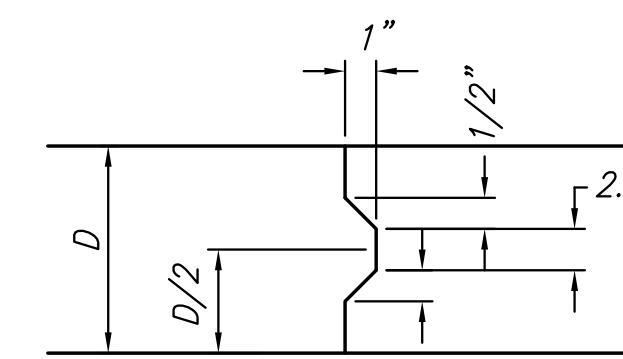


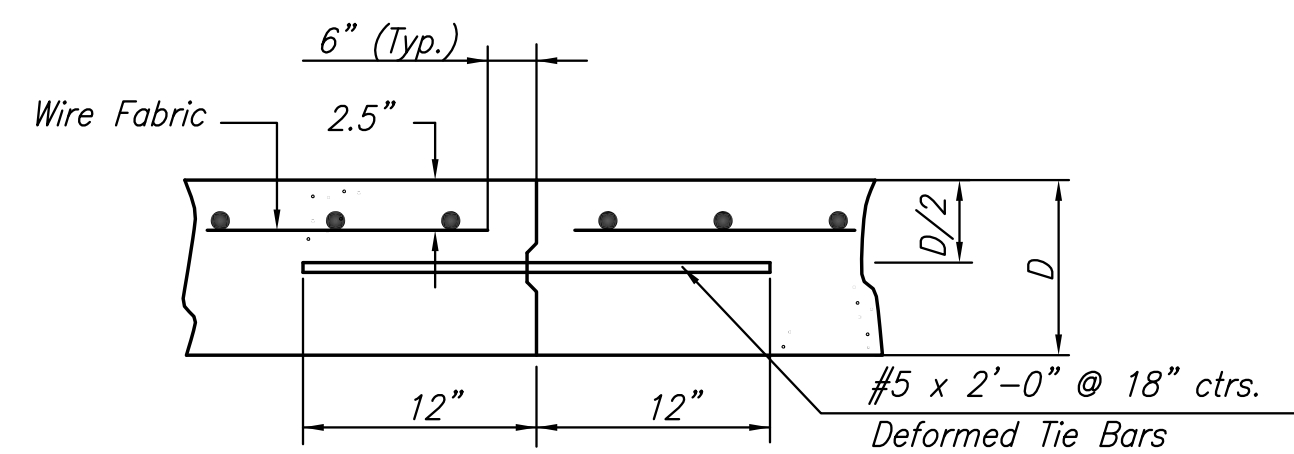
**ISOLATION JOINT (I.J.)**  
(At Structures)



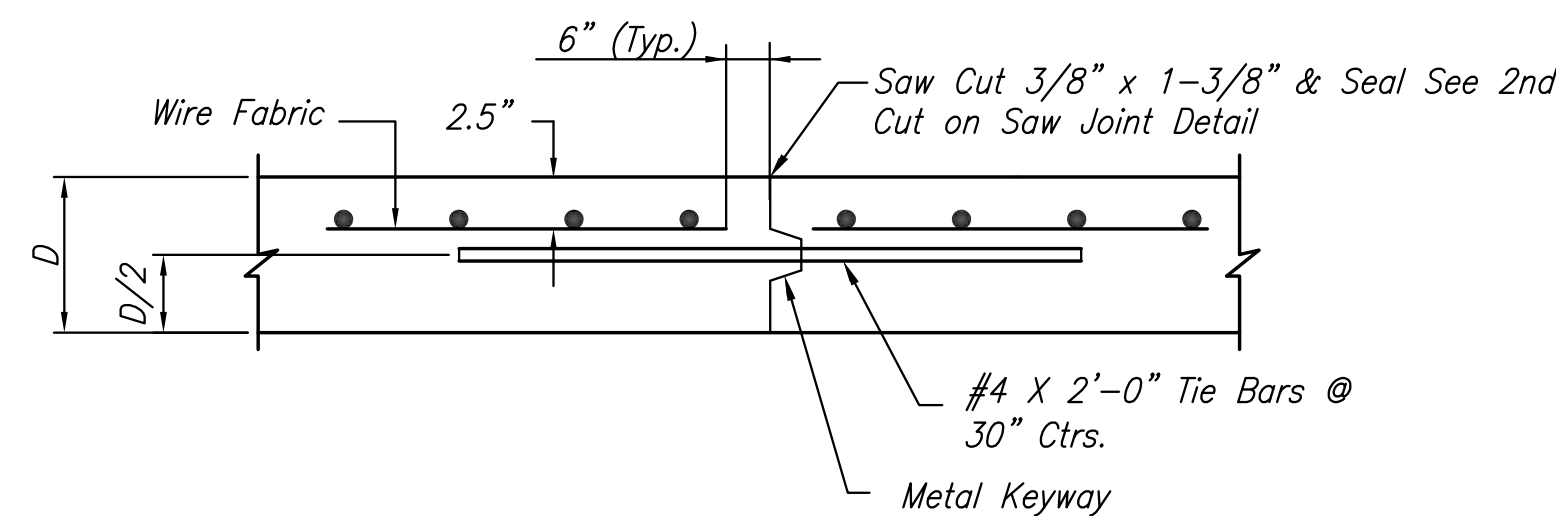
**LONGITUDINAL JOINT DETAIL (L.J.)**



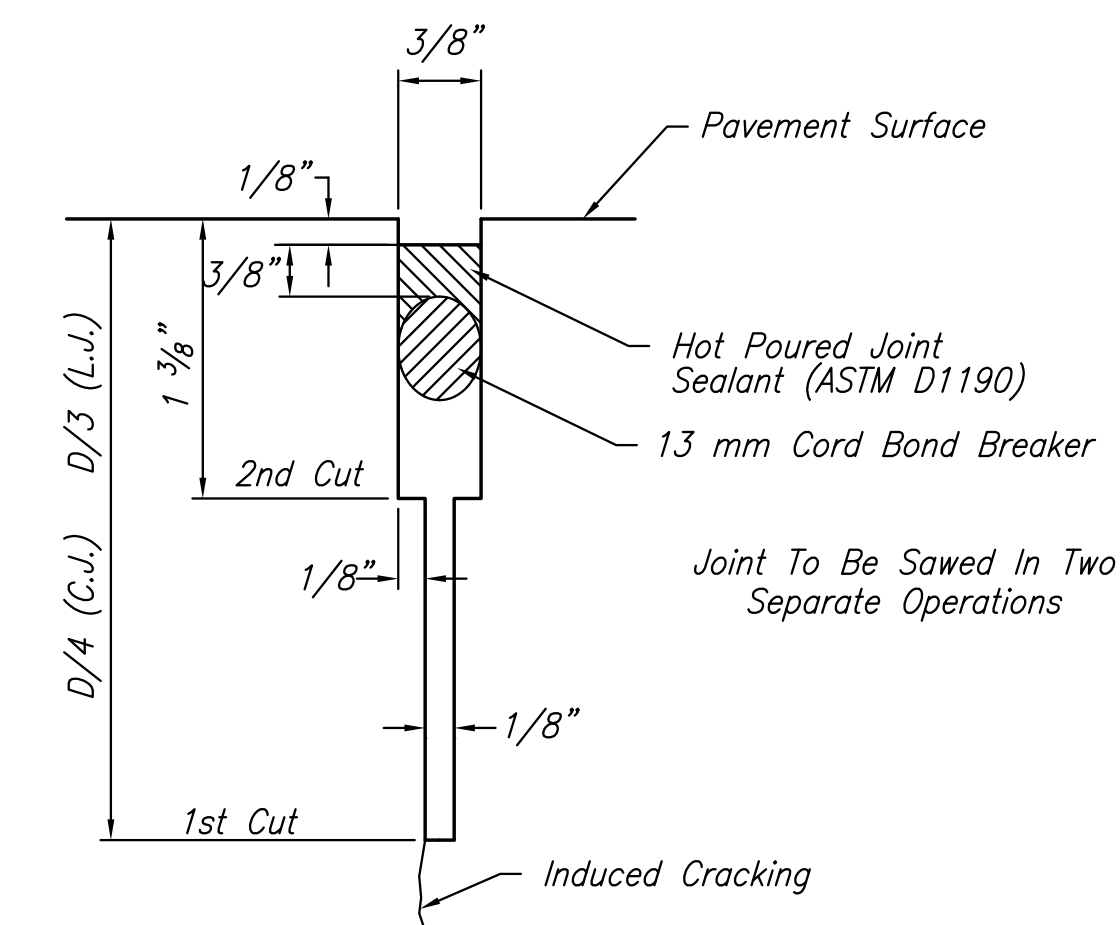
**KEYWAY DETAIL**



**TIED CONSTRUCTION AND CONTRACTION JOINT DETAIL (T.C.J.)(C.J.)**



**OPTIONAL LONGITUDINAL JOINT DETAIL (L.J.)**



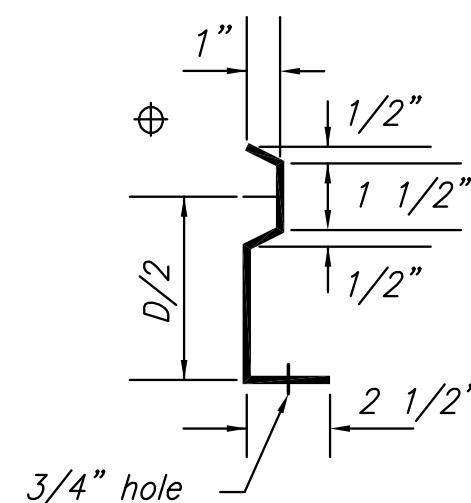
**SAW JOINT DETAIL**

Note: Contraction joints will be constructed at the planned location or as directed by the Engineer. When necessary to interrupt continuous placement for a substantial length of time or at the end of a day's pour, the Contractor has the option of ending placement at a contraction joint or with a construction joint located a minimum of five (5) feet from a contraction joint. Either joint type may be constructed by placing a header at the end of the pour or by paving past the joint location, sawing the joint after the concrete has hardened, and drilling holes for the tie bars and securing into the concrete with epoxy or cement grout.

Note: 6"x12" W4xW4 Wire Fabric Reinforcing shall be placed such that the wires with 6" spacing will run parallel with the longitudinal joint.

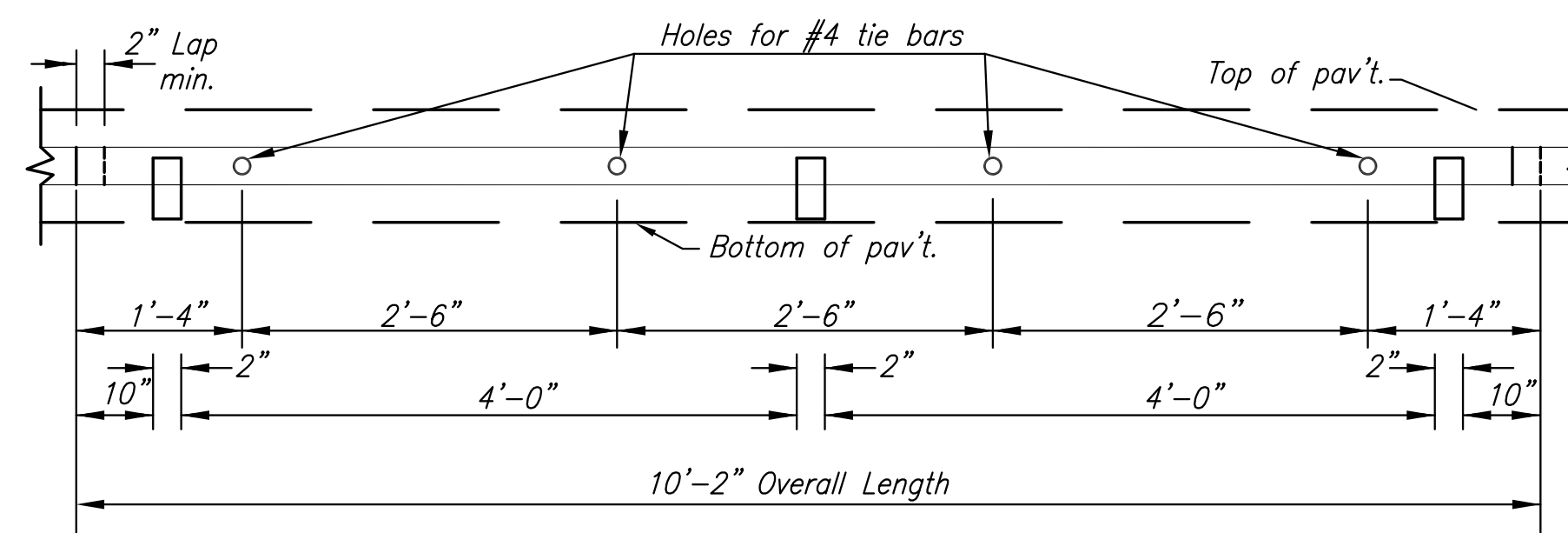
Note: Details on this sheet apply to all concrete pavement with exception to driveways and valley gutters. Details on driveway and valley gutter joints are provided on the appropriate detail sheet.

**CENTRAL AVENUE  
IMPROVEMENTS FROM  
135TH ST. W. TO 119TH ST. W.**



**SECTION OF RECESSED FORM LEG**

⊕ Snap-in leg or other approved designs may be used in lieu of welded leg.



**METAL STRIP FOR LONGITUDINAL CONSTRUCTION JOINT**

To be used only against forms. Shall not extend through contraction or expansion joints. Other types of construction shall be permitted with the approval of the engineer.

**CONCRETE PAVEMENT DETAILS**

SHEET TITLE  
472-84017  
PROJECT NUMBER

JRA  
DESIGN BY  
JSB  
DRAWN BY  
JRA  
CHECKED BY

ISSUED  
November 9, 2012  
REVISED

SHEET NO.  
42 of 220