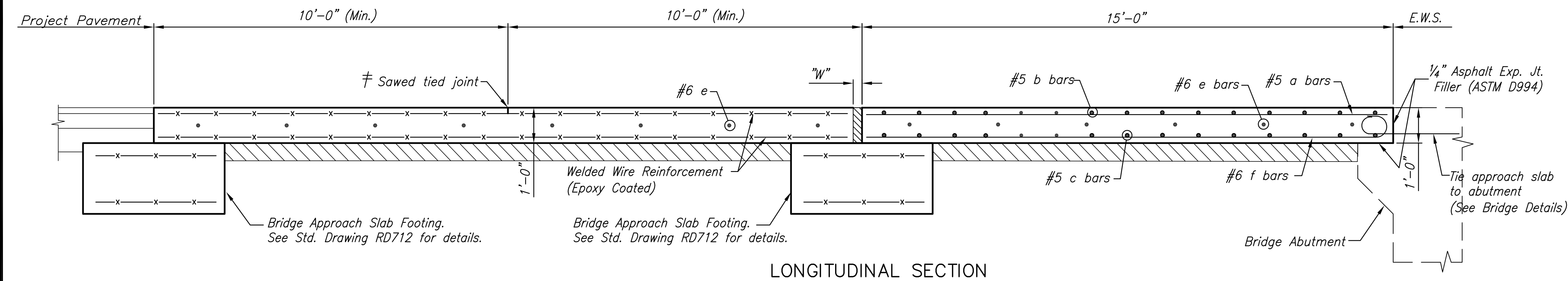


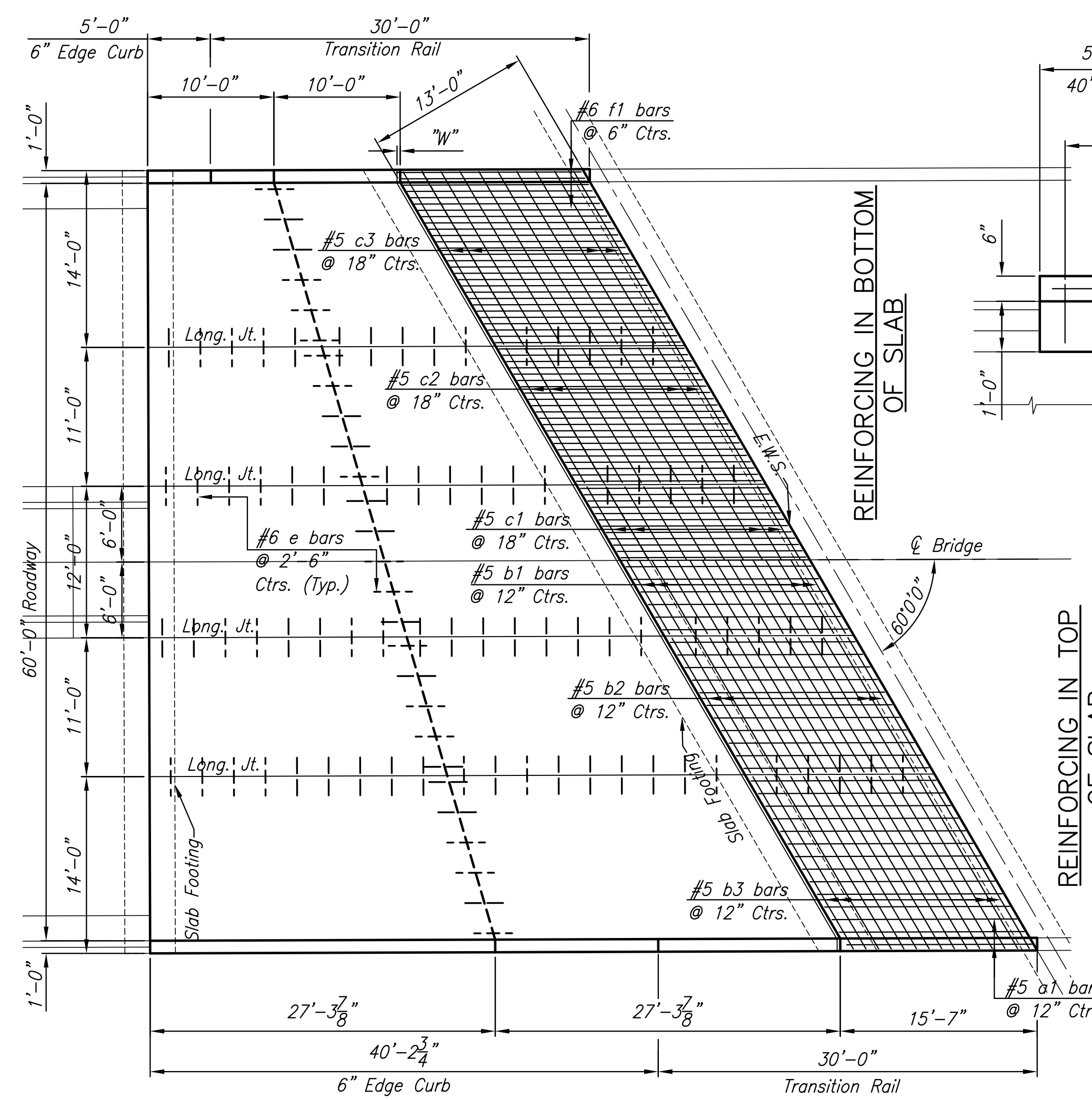
W = For Expansion/Pressure Relief Joint width and details see Sheet No. 48
 † Contractor has the option of substituting a Tied Keyed Construction Joint.

GENERAL NOTES

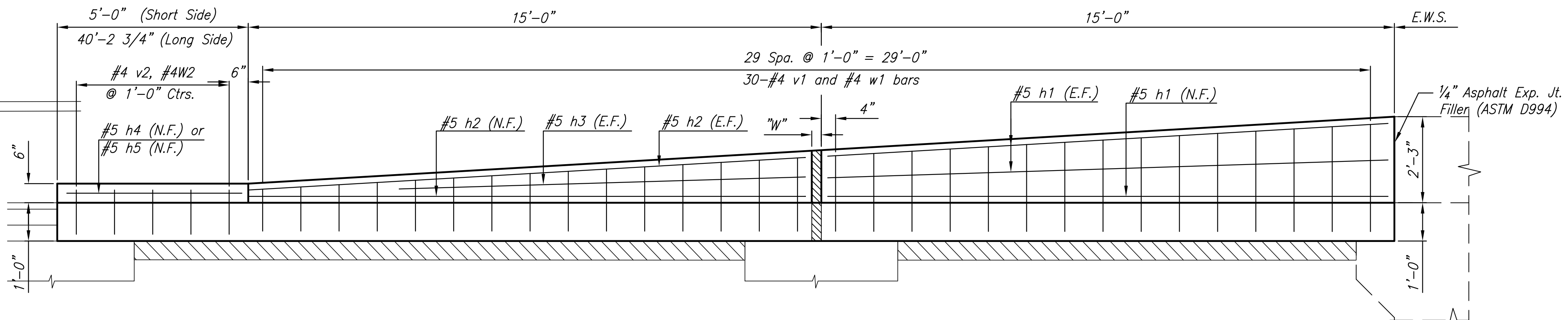
1. Special Concrete Bridge Approach shall be paid for as sq. yds of "Concrete Pavement 12" (Reinforced)" and includes all work and materials required to construct the approach slab as shown on this sheet.
2. Transition Approach Rail shall be paid for as lineal feet of "Concrete Safety Barrier".
3. Formed joints shall be edged with 1/4" radius tool for length of joint.
4. Clearance from the face of concrete for all reinforcing steel, unless noted, shall be 2".
5. All casting to existing concrete, if cast previously, shall be brush blasted and power washed prior to casting concrete.
6. All existing concrete shall be water soaked for 2 hours prior to casting concrete.
7. All reinforcing steel shall be epoxy coated.
8. Standard reinforcing bar hooks in accordance with the latest ACI specifications shall be used throughout.
9. The pressure relief joint shall be omitted when the concrete bridge approach pavement abuts asphalt pavement.
10. All work and materials required for installation of expansion joints and pressure relief joints shall be subsidiary to this bid item.
11. At the Contractor's option #4x3'-0" tie bars @ 15" centers may be substituted for the #6 e-bars at 2'-6" centers.



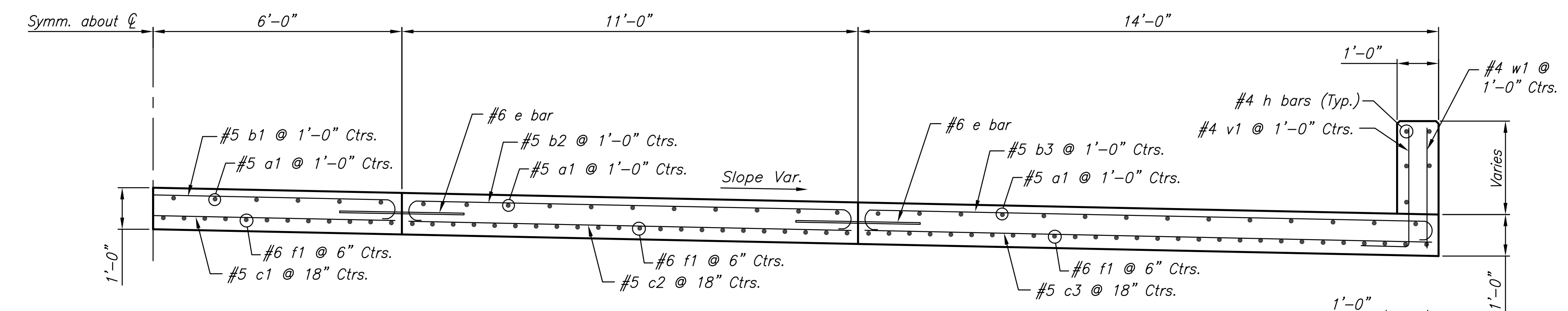
LONGITUDINAL SECTION



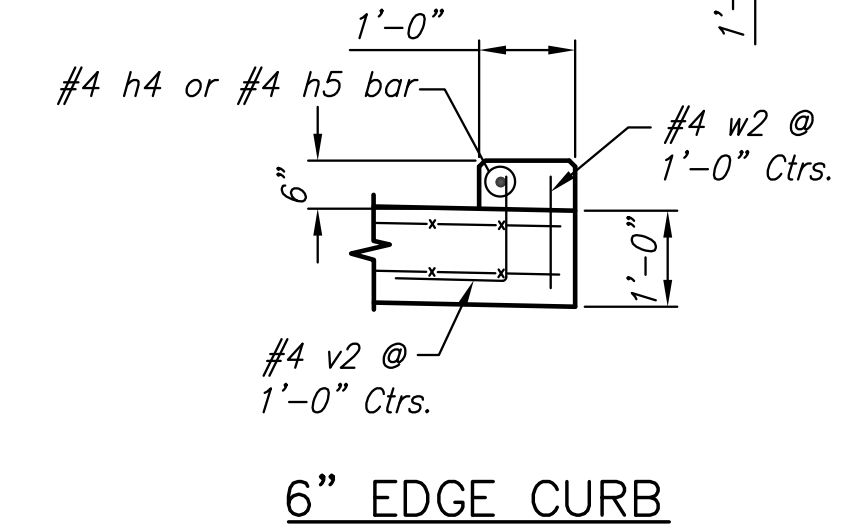
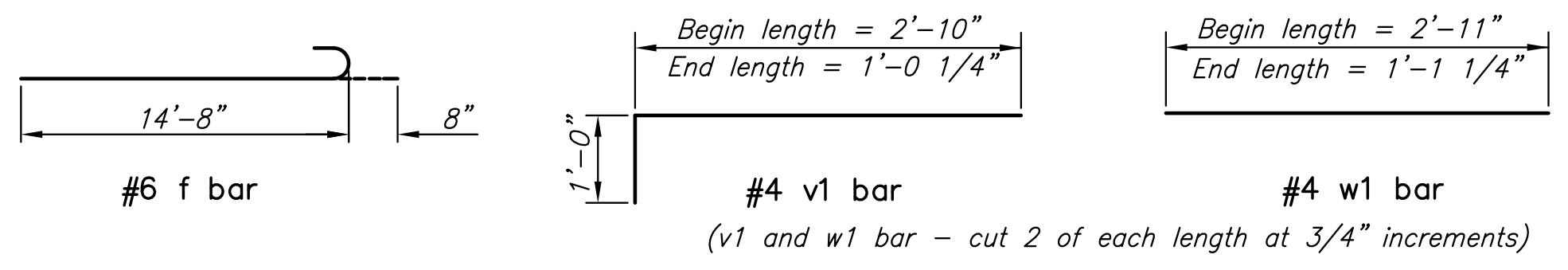
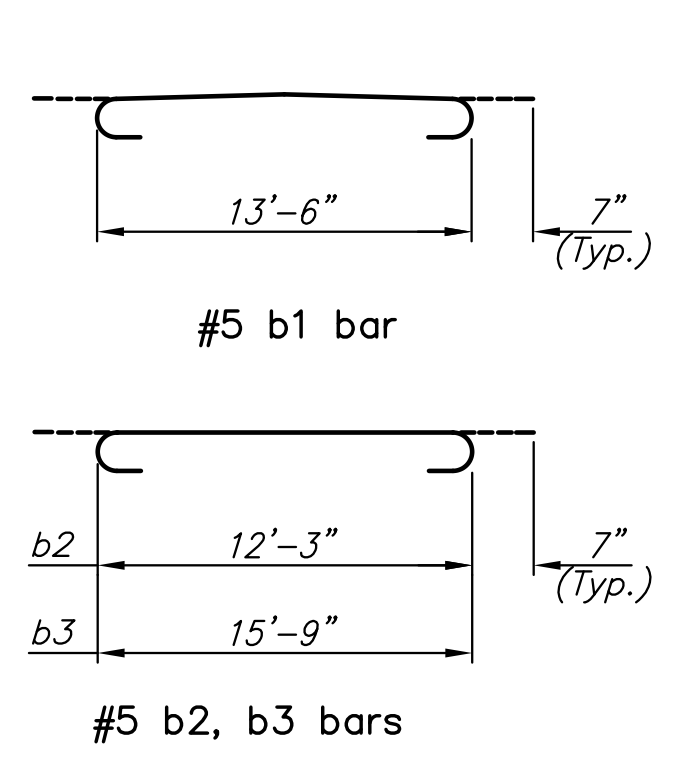
PLAN VIEW
(See Sheet 46 for Elevations)



TRANSITION RAIL
CENTRAL Sta. 57+73.83 to 58+26.16,
Left and Right

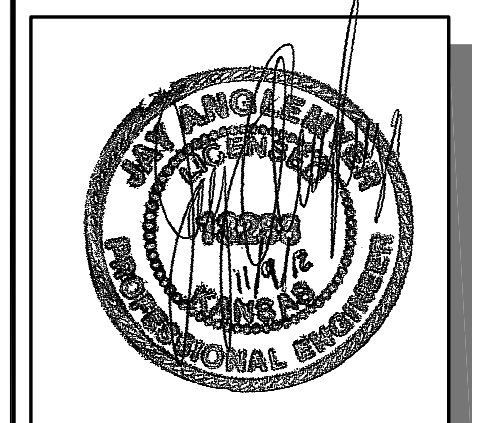


TYPICAL HALF SECTION



BENDING DIAGRAM
All dimensions are out to out unless otherwise noted.

BILL OF MATERIALS (ONE APPROACH ONLY)																				
Bar Schedule										△ See Bending Diagram										
Bar No.	a1	b1	b2	b3	c1	c2	c3	e	f1	h1	h2	h3	h4	h5	v1	w1	v2	w2		
68	#5	#6	#6	#6	#5	#5	#5	#6	#6	#5	#5	#5	#5	#5	#4	#4	#4	#4	#4	
Length	14'-8"	14'-8"	13'-6"	16'-11"	13'-6"	12'-3"	15'-9"	3'-0"	13'-4"	14'-8"	14'-5"	10'-8"	4'-8"	39'-11"	△	△	2'-2"	1'-2"		



**CENTRAL AVENUE
IMPROVEMENTS FROM
135TH ST. W. TO 119TH ST. W.**

**CENTRAL AVE
APPROACH
SLAB
DETAILS**
SHEET TITLE
472-84017
PROJECT NUMBER

DESIGN BY: JRA
DRAWN BY: WANJ
CHECKED BY: JRA

ISSUED
November 9, 2012
REVISED

SHEET NO.
43 of 220